

**TOP ALTITUDE:  
3000**

TAKEOFF MINIMUMS

Rwys 5L/R, 9, 23L/R: Standard.

Rwy 27: 300-1½ or standard with a minimum climb of 209' per NM to 1000, or alternatively, with standard takeoff minimums and a normal 200' per NM climb gradient, takeoff must occur no later than 1300' prior to departure end of runway.

ATIS 127.425  
GND CON  
119.975  
WILLOW RUN TOWER  
125.275 256.9  
DETROIT DEP CON  
118.95 284.0

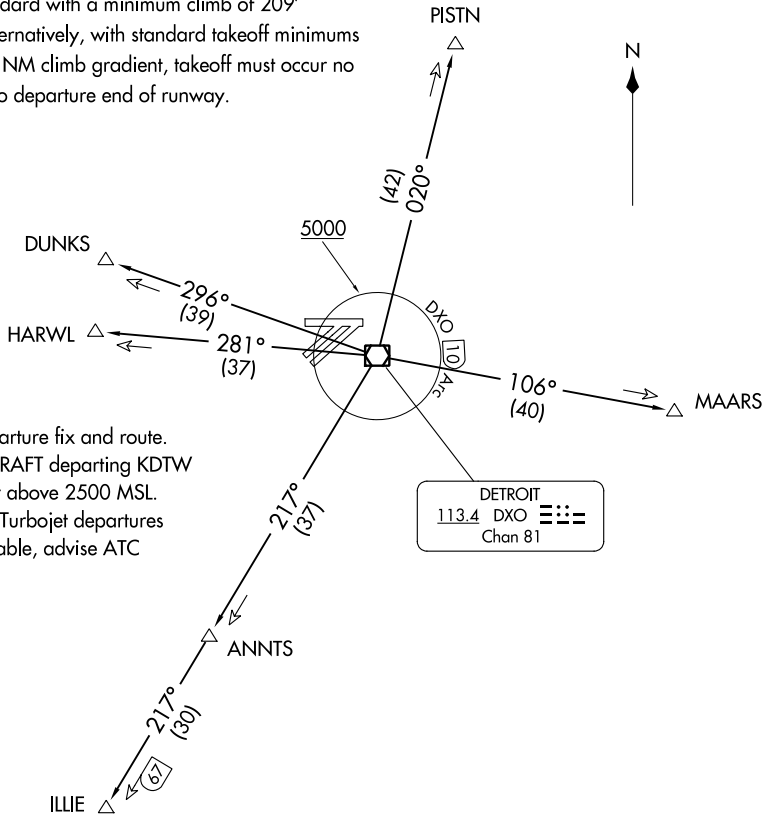
NOTE: RADAR required.  
NOTE: DME required.  
NOTE: For use by non-RNAV equipped aircraft only.

SPECIAL INSTRUCTIONS:

When using this departure, file the appropriate depicted departure fix and route.  
Aircraft over HARWL must file FL220 and below. PROP AIRCRAFT departing KDTW Rwy 21L/R and 22L/R westbound, cross DXO 3.5 DME at or above 2500 MSL.  
Aircraft landing Cleveland (CLE) must file MAARS transition. Turbojet departures at/above 10000, maintain 280K until advised by ATC. If unable, advise ATC prior to departure.

(NARRATIVE ON FOLLOWING PAGE)

NOTE: Chart not to scale.



METRO THREE DEPARTURE  
(METRO3.DXO) 05NOV20

DETROIT, MICHIGAN  
WILLOW RUN (Y1P)

(METRO3.DXO) 23334  
METRO THREE DEPARTURE

AL-467 (FAA)

WILLOW RUN (Y1P)  
DETROIT, MICHIGAN



DEPARTURE ROUTE DESCRIPTION

TAKEOFF ALL RUNWAYS: Climb on assigned heading, thence....

.....maintain ATC assigned altitude for RADAR vectors to intercept filed/assigned transition or enroute fix/navaid. When ATC assigned altitude is at or above 5000, cross DXO 10 DME Arc at or above 5000 for noise abatement. If unable to comply, advise ATC prior to departure. Expect clearance to filed altitude/flight level within ten (10) minutes after departure.

DUNKS TRANSITION (METRO3.DUNKS): From over DXO VOR/DME on DXO R-296 to DUNKS.

HARWL TRANSITION (METRO3.HARWL): From over DXO VOR/DME on DXO R-281 to HARWL.

ILLIE TRANSITION (METRO3.ILLIE): From over DXO VOR/DME on DXO R-217 to ILLIE.

MAARS TRANSITION (METRO3.MAARS): From over DXO VOR/DME on DXO R-106 to MAARS.

PISTN TRANSITION (METRO3.PISTN): From over DXO VOR/DME on DXO R-020 to PISTN.

EC-1, 22 FEB 2024 to 21 MAR 2024

EC-1, 22 FEB 2024 to 21 MAR 2024