

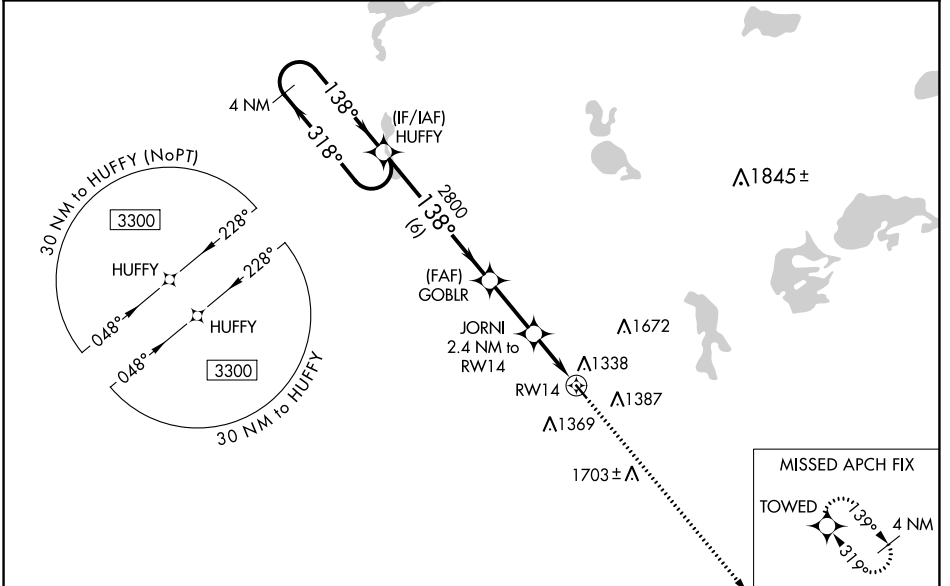
WAAS CH 49231 W14A	APP CRS 138°	Rwy Idg TDZE Apt Elev	3401 1206 1206
--	------------------------	-----------------------------	---

RNAV (GPS) RWY 14

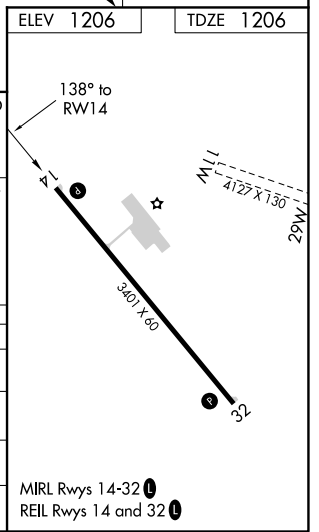
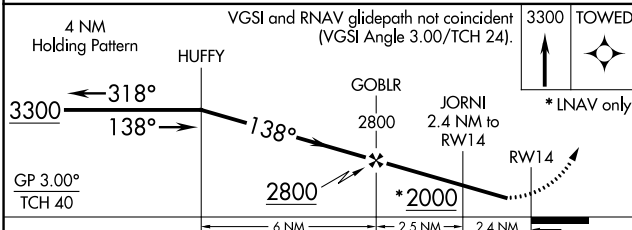
ELBOW LAKE MUNI - PRIDE OF THE PRAIRIE (Y63)

RNP APCH.	Baro-VNAV NA when using Fergus Falls altimeter setting. For uncompensated Baro-VNAV systems, LNAV/VNAV NA below -17°C or above 54°C. Circling NA northeast of Rwy 14-32. Procedure NA at night. Rwy 14 helicopter visibility reduction below 3/4 SM NA. When local altimeter setting not received, use Fergus Falls altimeter setting and increase all DA 48 feet and all MDA 60 feet. Increase LNAV/VNAV all Cats visibility to 1 1/8 mile.	MISSED APPROACH: Climb to 3300 direct TOWED and hold.
-----------	--	--

AWOS-3 118.075	MINNEAPOLIS CENTER 126.1 269.2	CTAF 122.9 0
--------------------------	--	------------------------



ELEV 1206	TDZE 1206
-----------	-----------



CATEGORY	A	B	C	D
LPV DA	1456-1	250 (300-1)		NA
LNAV/VNAV DA	1557-1 1/8	351 (400-1 1/8)		NA
LNAV MDA	1600-1	394 (400-1)		NA
CIRCLING	1600-1 394 (400-1)	1680-1 474 (500-1)		NA

NC-1, 16 JUN 2022 to 14 JUL 2022

NC-1, 16 JUN 2022 to 14 JUL 2022

WAAS CH 53731 W32A	APP CRS 319°	Rwy Idg TDZE 1206 Apt Elev 1206	3401
--	------------------------	---	-------------

RNAV (GPS) RWY 32

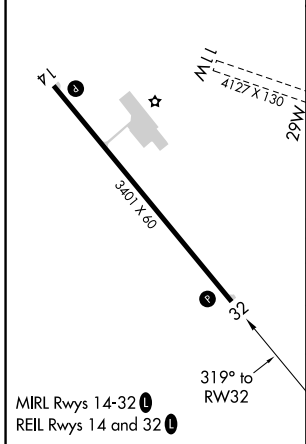
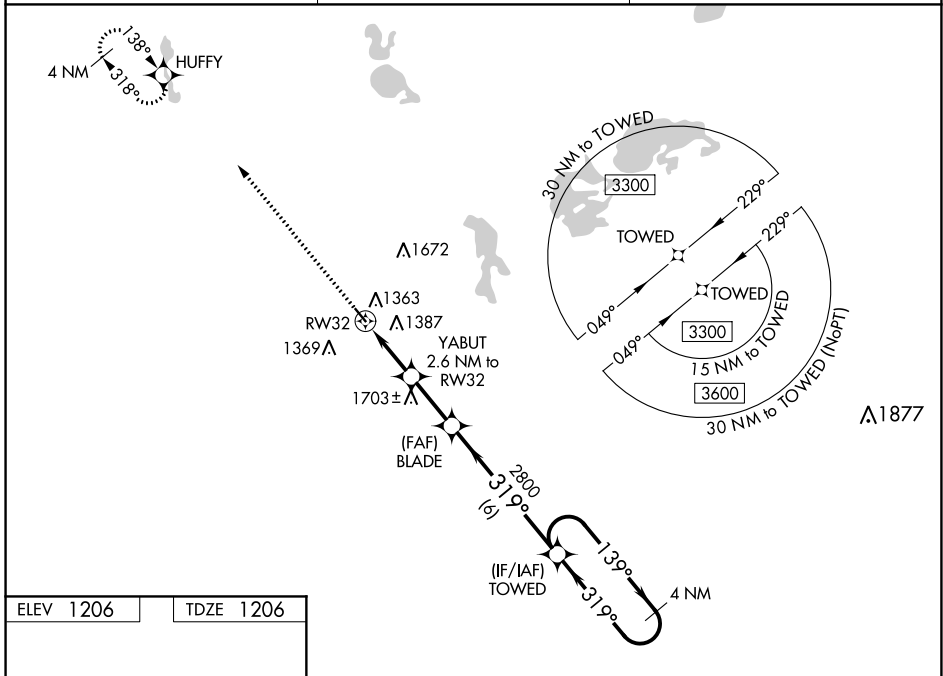
ELBOW LAKE MUNI - PRIDE OF THE PRAIRIE (Y63)

RNP APCH.

Baro-VNAV NA when using Fergus Falls altimeter setting. For uncompensated Baro-VNAV systems, LNAV/VNAV NA below -17°C or above 54°C. Circling NA northeast of Rwy 14-32. Procedure NA at night. When local altimeter setting not received, use Fergus Falls altimeter setting and increase all DA 48 feet and all MDA 60 feet. Increase LNAV/VNAV all Cats visibility to 1½ mile.

MISSED APPROACH:
Climb to 3300 direct HUFFY and hold.

AWOS-3 118.075	MINNEAPOLIS CENTER 126.1 269.2	CTAF 122.9
--------------------------	--	----------------------



3300 HUFFY	VGSI and RNAV glidepath not coincident (VGSI Angle 3.00/TCH 26).	4 NM Holding Pattern
* LNAV only	YABUT 2.6 NM to RW32	BLADE 2800
	RW32	(IF/IAF) TOWED
	2060*	2800
	2.6 NM	2.3 NM
		6 NM
		319°
		139°
		3300
		GP 3.00°
		TCH 40

CATEGORY	A	B	C	D
LPV DA	1456-1	250 (300-1)		NA
LNAV/VNAV DA	1595-1 ³ / ₈	389 (400-1 ³ / ₈)		NA
LNAV MDA	1580-1	374 (400-1)		NA
CIRCLING	1600-1 394 (400-1)	1680-1 474 (500-1)		NA

NC-1, 16 JUN 2022 to 14 JUL 2022

NC-1, 16 JUN 2022 to 14 JUL 2022