

APP CRS	Rwy Idg	6669
229°	TDZE	76
	Apt Elev	76

RNAV (GPS) RWY 23

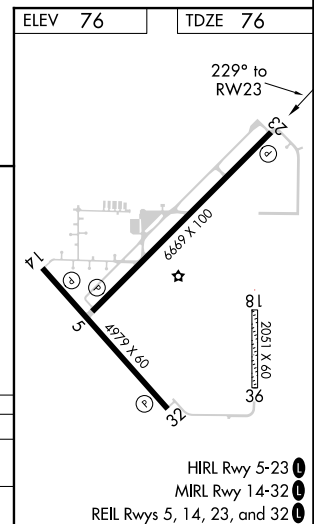
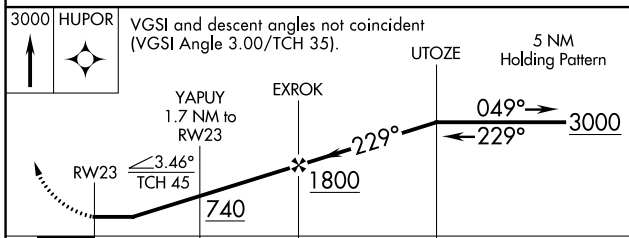
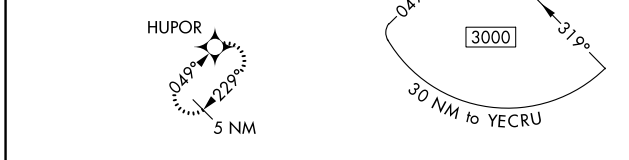
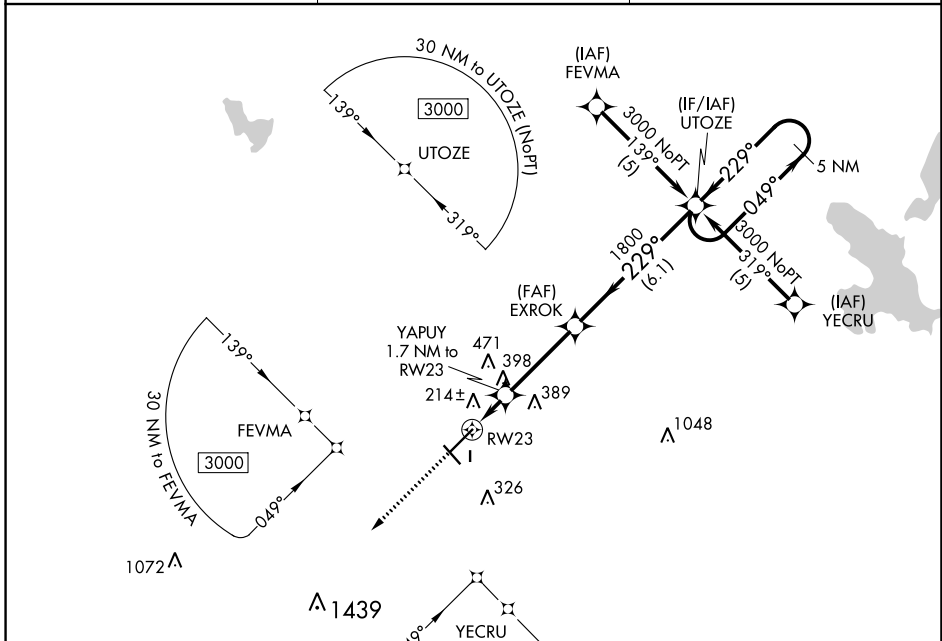
WILLISTON MUNI (X60)

RNP APCH.

⚠ When local altimeter setting not received, use Ocala altimeter setting and increase all MDAs 60 feet and all Cat C visibilities ¼ SM. Circling Rwy 14, 32 NA at night. Rwy 23 helicopter visibility reduction below ¾ SM NA. Circling NA to Rwy 18 and 36.

⚠ MISSED APPROACH: Climb to 3000 direct HUPOR and hold.

AWOS-3T 118.425	JACKSONVILLE APP CON 118.6 251.15	UNICOM 122.975 (CTAF) 0
---------------------------	---	-----------------------------------



CATEGORY	A	B	C	D
LNVA MDA	480-1	404 (500-1)	480-1¼ 404 (500-1¼)	NA
CIRCLING	520-1 444 (500-1)	640-1 564 (600-1)	840-2¼ 764 (800-2¼)	NA

HIRL Rwy 5-23 0
MIRL Rwy 14-32 0
REIL Rwy 5, 14, 23, and 32 0

SE-3, 07 OCT 2021 to 04 NOV 2021

SE-3, 07 OCT 2021 to 04 NOV 2021

APP CRS	Rwy Idg	6669
049°	TDZE	73
	Apt Elev	76

RNAV (GPS) RWY 5

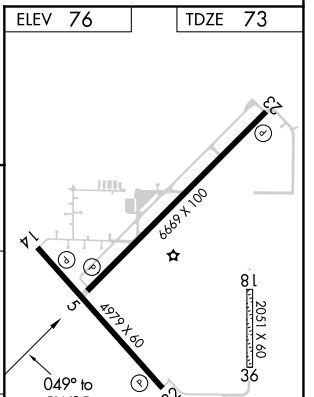
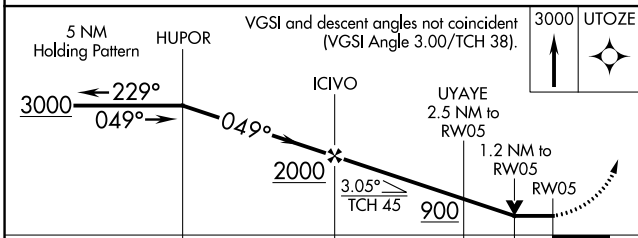
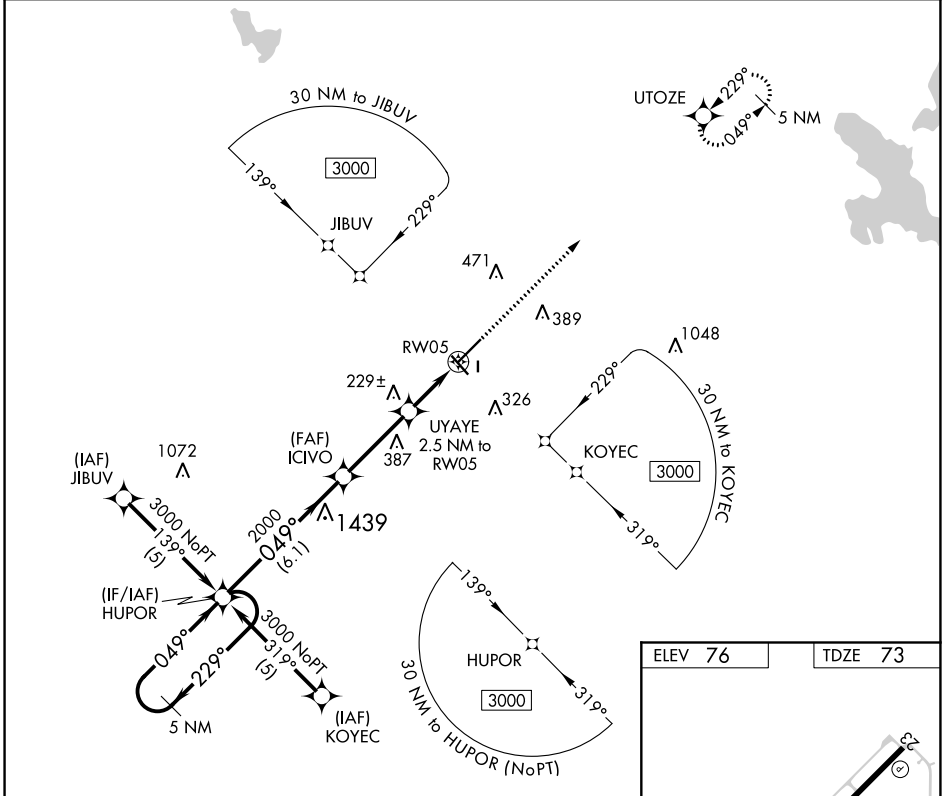
WILLISTON MUNI (X60)

RNP APCH.

When local altimeter setting not received, use Ocala altimeter setting and increase all MDAs 60 feet and all Cat C visibilities ¼ SM. Circling Rwy 14, 32 NA at night. Rwy 5 helicopter visibility reduction below ¾ SM NA. Circling NA to Rwy 18 and 36.

MISSED APPROACH: Climb to 3000 direct UTOZE and hold.

AWOS-3T 118.425	JACKSONVILLE APP CON 118.6 251.15	UNICOM 122.975 (CTAF) 0
---------------------------	---	-----------------------------------



CATEGORY	A	B	C	D
LNVA MDA	480-1	407 (500-1)	480-1¼ 407 (500-1¼)	NA
CIRCLING	520-1 444 (500-1)	640-1 564 (600-1)	840-2¼ 764 (800-2¼)	NA

HIRL Rwy 5-23 0
MIRL Rwy 14-32 0
REIL Rwy 5, 14, 23, and 32 0

SE-3, 07 OCT 2021 to 04 NOV 2021

SE-3, 07 OCT 2021 to 04 NOV 2021