

APP CRS	Rwy Idg	<b>3751</b>
<b>181°</b>	TDZE	<b>534</b>
	Apt Elev	<b>537</b>

# RNAV (GPS) RWY 18

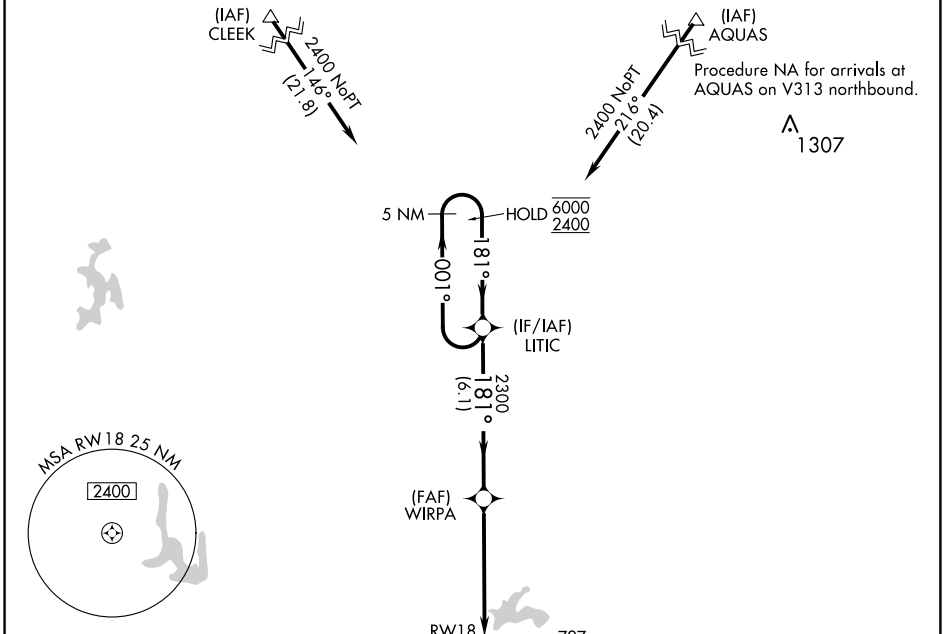
VANDALIA MUNI (VLA)

RNP APCH - GPS.

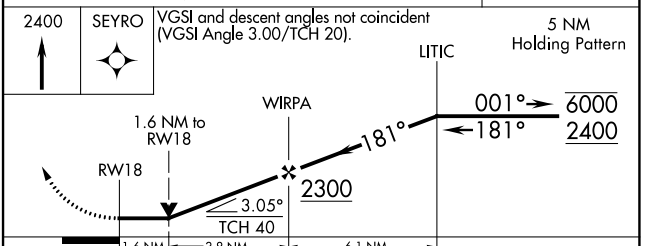
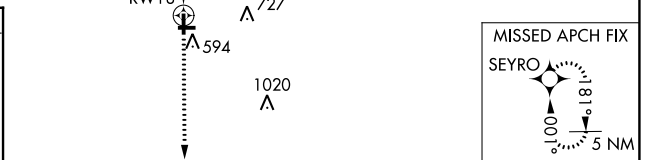
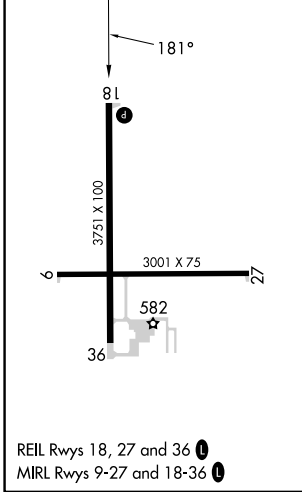
**⚠** Rwy 18 helicopter visibility reduction below 3/4 SM NA. When local altimeter setting not received, use Salem altimeter setting; increase all MDAs 60 feet and visibility Cats C and D 1/4 SM.

MISSED APPROACH: Climb to 2400 direct SEYRO and hold.

AWOS-AV <b>122.8</b>	KANSAS CITY CENTER <b>124.3 269.15</b>	UNICOM <b>122.8 (CTAF) 0</b>
-------------------------	-------------------------------------------	---------------------------------



ELEV 537	TDZE 534
----------	----------



CATEGORY	A	B	C	D
LNAV MDA	1060-1	526 (600-1)	1060-1½	526 (600-1½)
CIRCLING	1060-1	523 (600-1)	1060-1½ 523 (600-1½)	1220-2¼ 683 (700-2¼)

EC-3, 22 FEB 2024 to 21 MAR 2024

EC-3, 22 FEB 2024 to 21 MAR 2024