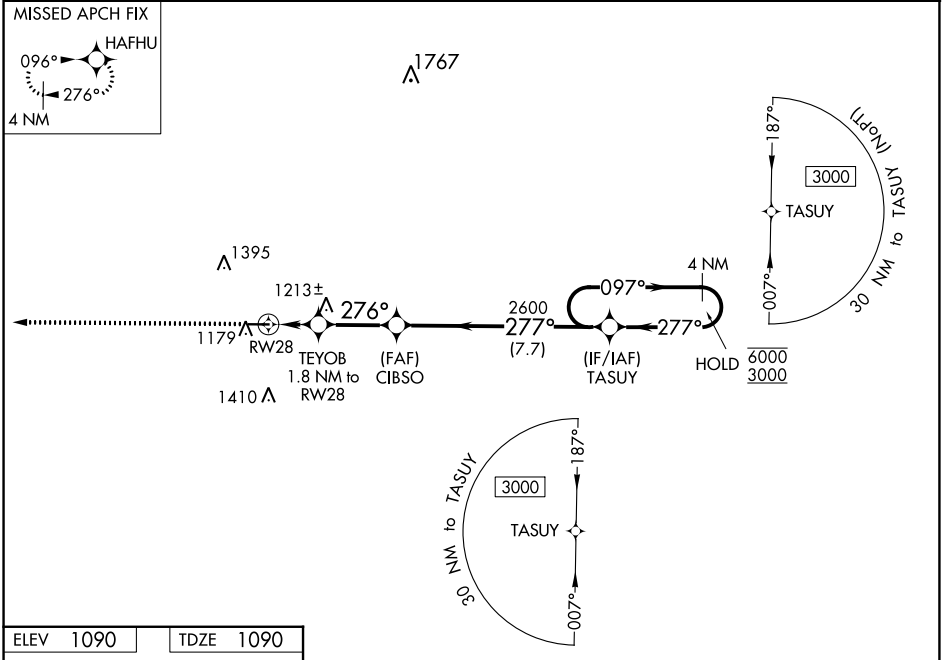


WAAS CH 70541 W28A	APP CRS 276°	Rwy Idg TDZE Apt Elev	4201 1090 1090
--	------------------------	-----------------------------	---

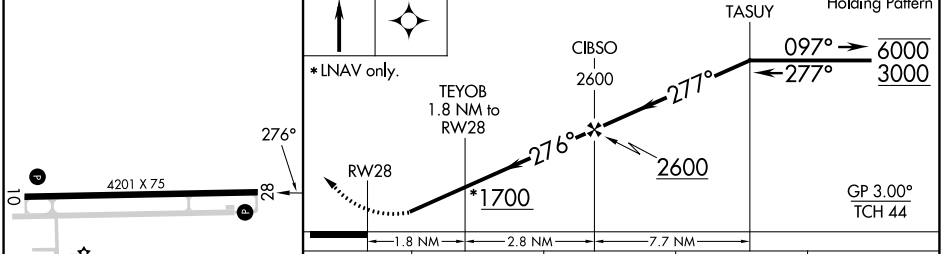
RNAV (GPS) RWY 28

NEW CASTLE HENRY COUNTY MARLATT FLD (UWL)

RNP APCH.		MISSED APPROACH: Climb to 3000 direct HAFHU and hold.	
<p>▼ Rwy 28 helicopter visibility reduction below 3/4 SM NA. Baro-VNAV NA. ▲ NA Use Anderson altimeter setting; when not received, use Muncie altimeter setting and increase LPV DA to 1.416, LNAV/VNAV DA to 1.441, and all MDA 20 feet.</p>			
AWOS-3 132.375	AID AWOS-3 128.55	INDIANAPOLIS APP CON 135.45 317.8	UNICOM 123.05 (CTAF) 1



ELEV 1090	TDZE 1090
-----------	-----------



CATEGORY	A	B	C	D
LPV DA	1412-1 322 (400-1)			
LNAV/VNAV DA	1437-1 347 (400-1)			
LNAV MDA	1540-1	450 (500-1)	1540-1 3/8	450 (500-1 3/8)
<input checked="" type="checkbox"/> CIRCLING	1580-1 490 (500-1)	1600-1 510 (600-1)	1780-2 690 (700-2)	1780-2 1/4 690 (700-2 1/4)

EC-2, 22 FEB 2024 to 21 MAR 2024

EC-2, 22 FEB 2024 to 21 MAR 2024