

| | |
|------------------------|-------------------------|
| APP CRS 354° | Rwy Idg 4073 |
| | TDZE 2601 |
| | Apt Elev 2601 |

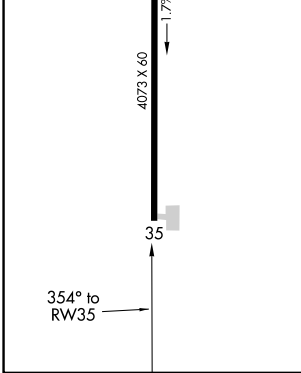
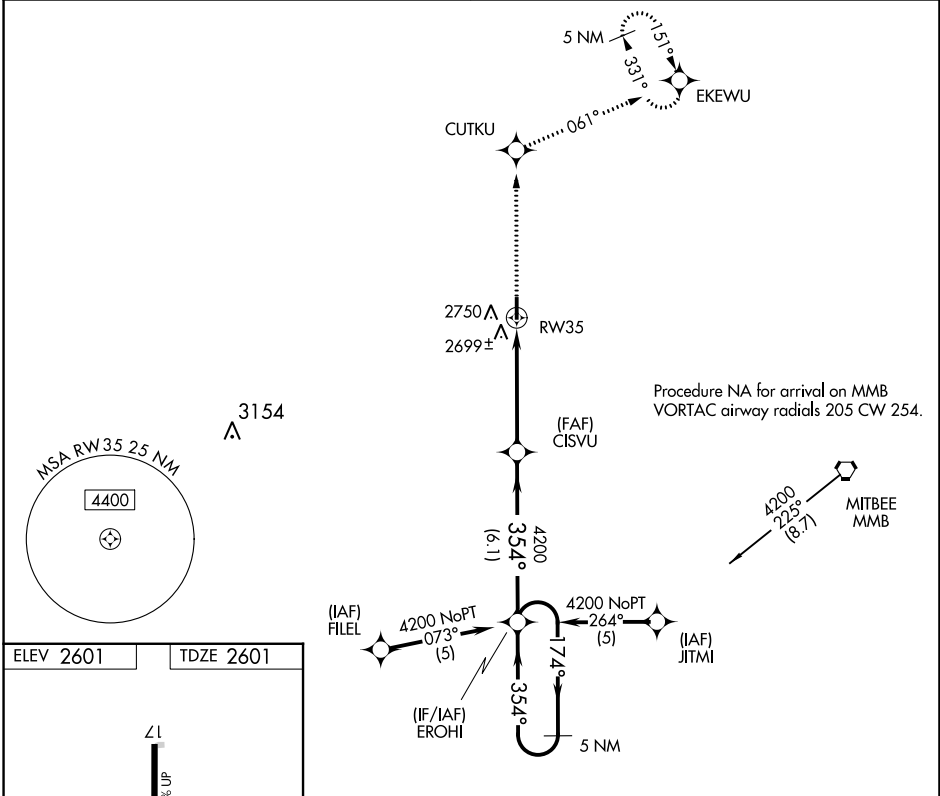
RNAV (GPS) RWY 35

FOLLETT/LIPSCOMB COUNTY (T93)

RNP APCH.
 ▼ Use Gage, OK altimeter setting, when not received use
 ▲ NA Perryton, TX altimeter setting and increase all MDA 20 feet.

MISSED APPROACH: Climb to 6000 direct CUTKU and on track 061° to EKEWU and hold, continue climb-in-hold to 6000.

| | |
|---|----------------------|
| KANSAS CITY CENTER 126.95 379.2 | CTAF 122.9 |
|---|----------------------|



| | | | | |
|----------|---------|-------------|----------------------|-------|
| 6000 | CUTKU | EKEWU | 5 NM Holding Pattern | |
| ↑ | tr 061° | | CISVU | EROHI |
| RW35 | | 354° | 354° | 174° |
| | | 4200 | 4200 | 354° |
| | | 4.8 NM | 6.1 NM | |
| CATEGORY | A | B | C | D |
| LNAV MDA | 3100-1 | 499 (500-1) | NA | |
| CIRCLING | 3160-1 | 559 (600-1) | NA | |

SC-2, 22 FEB 2024 to 21 MAR 2024

SC-2, 22 FEB 2024 to 21 MAR 2024