

SINTON, TEXAS

AL-5274 (FAA)

20366

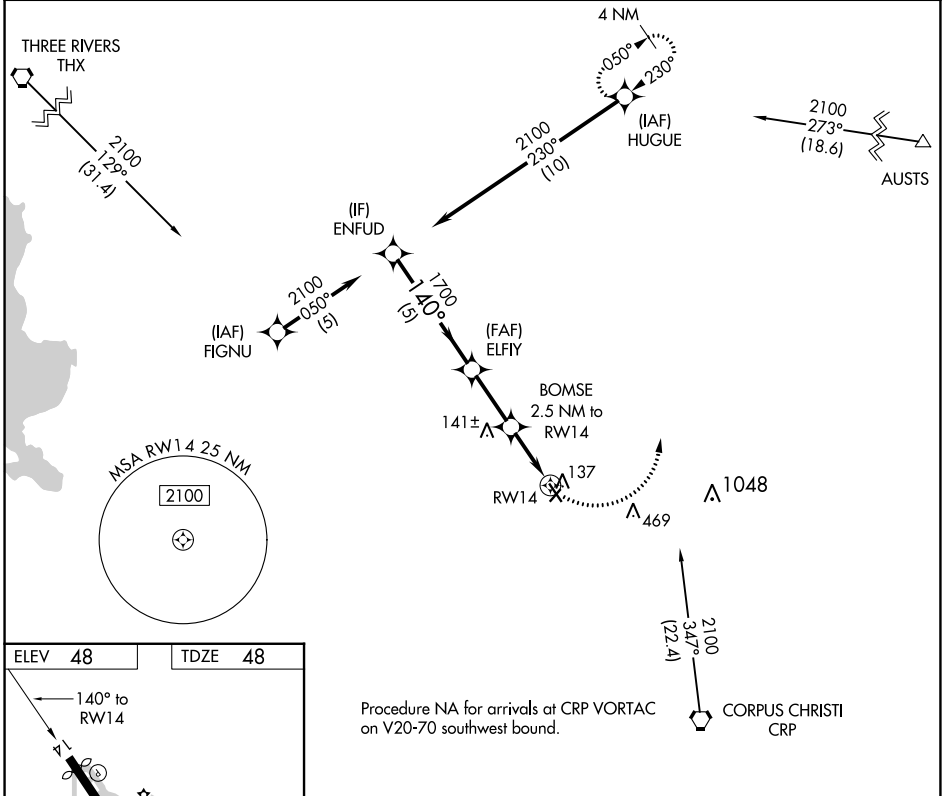
APP CRS	Rwy Idg	4073
140°	TDZE	48
	Apt Elev	48

RNAV (GPS) RWY 14

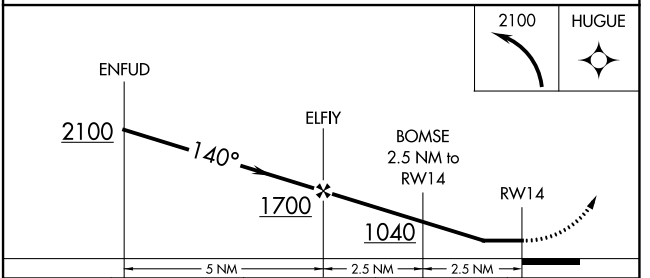
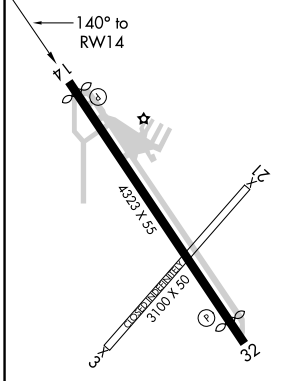
ALFRED C 'BUBBA' THOMAS (T69)

RNP APCH.	MISSED APPROACH: Climbing left turn to 2100 direct HUGUE and hold.
<p>Procedure NA at night.</p> <p>Rwy 14 helicopter visibility reduction below 1 SM NA.</p>	

AWOS-3 118.25	CORPUS APP CON 120.9 348.725	UNICOM 122.8 (CTAF) 0
-------------------------	--	---------------------------------



ELEV 48	TDZE 48
---------	---------



CATEGORY	A	B	C	D
LNVAI MDA	480-1	432 (500-1)		NA
CIRCLING	620-1 572 (600-1)	720-1 672 (700-1)		NA

SINTON, TEXAS
Orig-B 31DEC20

28°02'N-97°33'W

ALFRED C 'BUBBA' THOMAS (T69)

RNAV (GPS) RWY 14

SC-3, 22 FEB 2024 to 21 MAR 2024

SC-3, 22 FEB 2024 to 21 MAR 2024

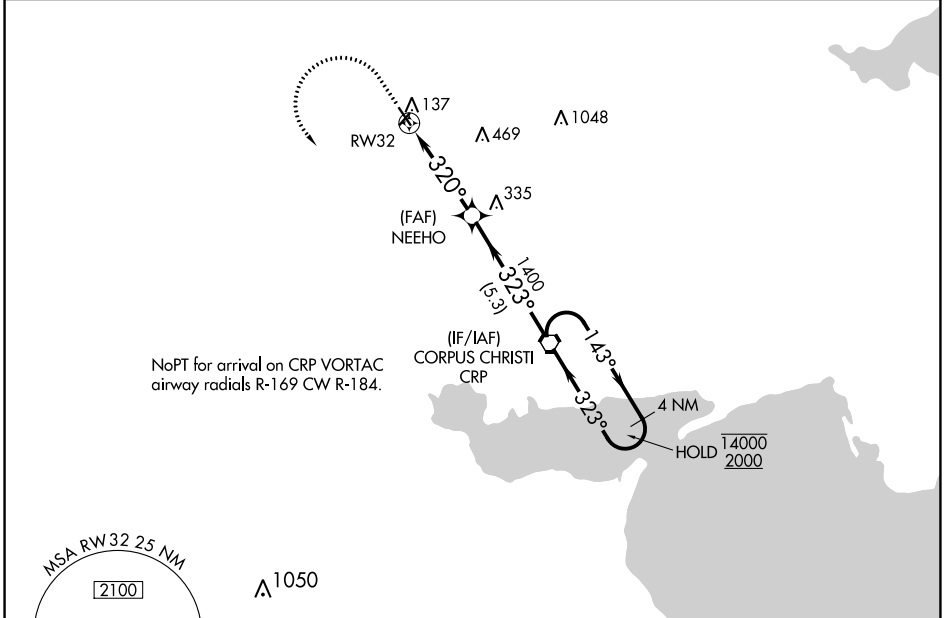
APP CRS 320°	Rwy Idg 3923
	TDZE 48
	Apt Elev 48

RNAV (GPS) RWY 32

ALFRED C 'BUBBA' THOMAS (T69)

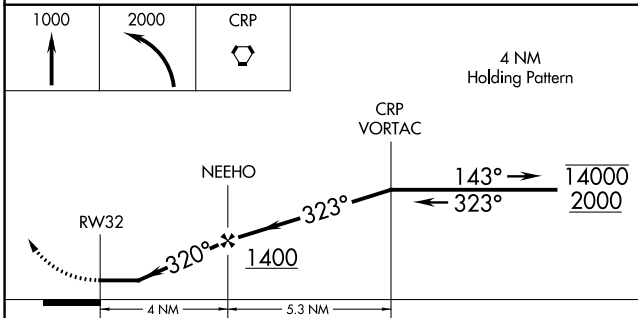
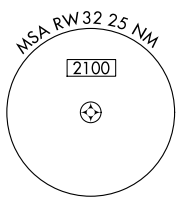
RNP APCH.	MISSED APPROACH: Climb to 1000 then climbing left turn to 2000 direct CRP VORTAC and hold.
<p>Procedure NA at night.</p> <p>Rwy 32 helicopter visibility reduction below 1 SM NA.</p>	

AWOS-3 118.25	CORPUS APP CON 120.9 348.725	UNICOM 122.8 (CTAF) 0
-------------------------	--	---------------------------------



SC-3, 22 FEB 2024 to 21 MAR 2024

SC-3, 22 FEB 2024 to 21 MAR 2024



ELEV 48	TDZE 48
---------	---------

MIRL Rwy 14-32 0
REIL Rwys 14 and 32 0

CATEGORY	A	B	C	D
LNAV MDA	520-1	472 (500-1)		NA
CIRCLING	620-1 572 (600-1)	720-1 672 (700-1)		NA

SINTON, TEXAS

AL-5274 (FAA)

20366

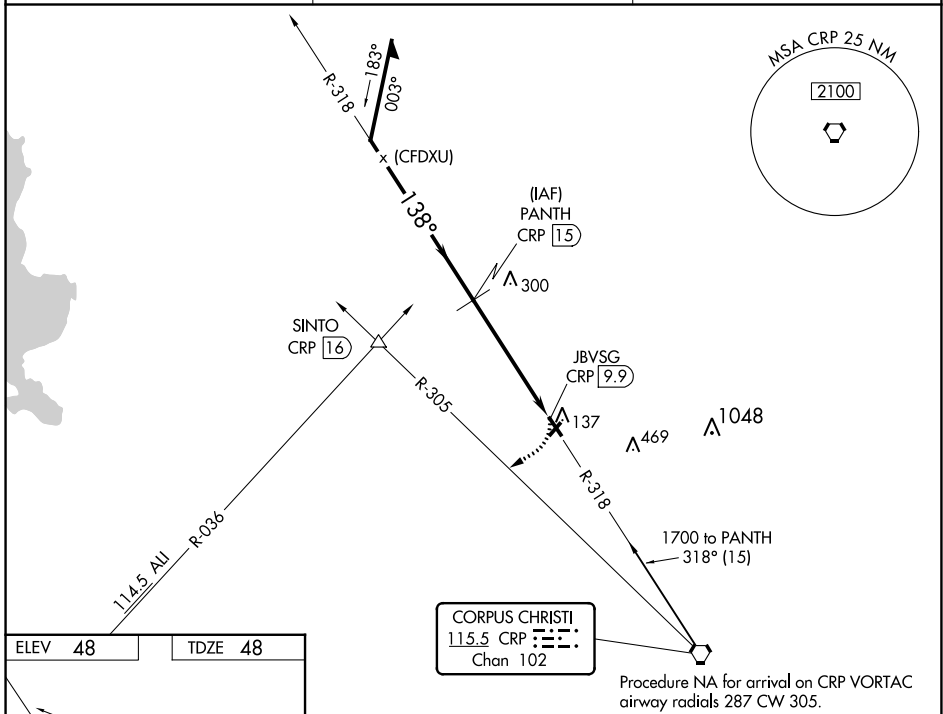
VORTAC CRP 115.5	APP CRS 138°	Rwy ldg 4073
Chan 102	TDZE 48	Apt Elev 48

VOR RWY 14

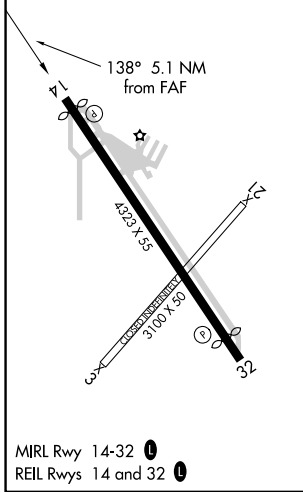
ALFRED C 'BUBBA' THOMAS (T69)

DME required.	MISSED APPROACH: Climbing right turn to 1800 on heading 230° and CRP VORTAC R-305 to SINTO INT/CRP 16 DME.
Procedure NA at night. Rwy 14 helicopter visibility reduction below 1 SM NA.	

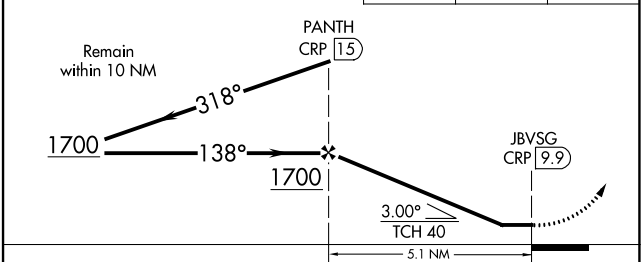
AWOS-3 118.25	CORPUS APP CON 120.9 348.725	UNICOM 122.8 (CTAF) 0
-------------------------	--	--



ELEV 48	TDZE 48
---------	---------



VGSI and descent angles not coincident (VGSI Angle 3.00°/TCH 19).	1800 hdg 230°	CRP R-305	SINTO △
---	------------------	-----------	---------



CATEGORY	A	B	C	D
S-14	640-1	592 (600-1)		NA
CIRCLING	640-1 592 (600-1)	720-1 672 (700-1)		NA

SINTON, TEXAS
Amdt 1C 31DEC20

28°02' N-97°33' W

ALFRED C 'BUBBA' THOMAS (T69)

VOR RWY 14

SC-3, 22 FEB 2024 to 21 MAR 2024

SC-3, 22 FEB 2024 to 21 MAR 2024