

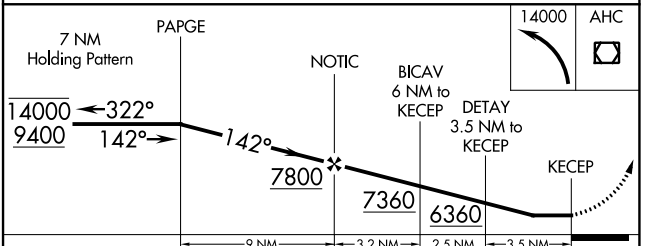
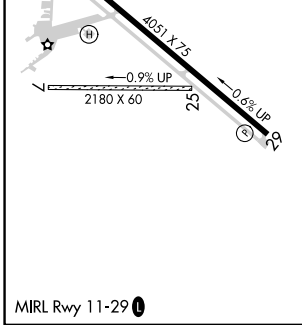
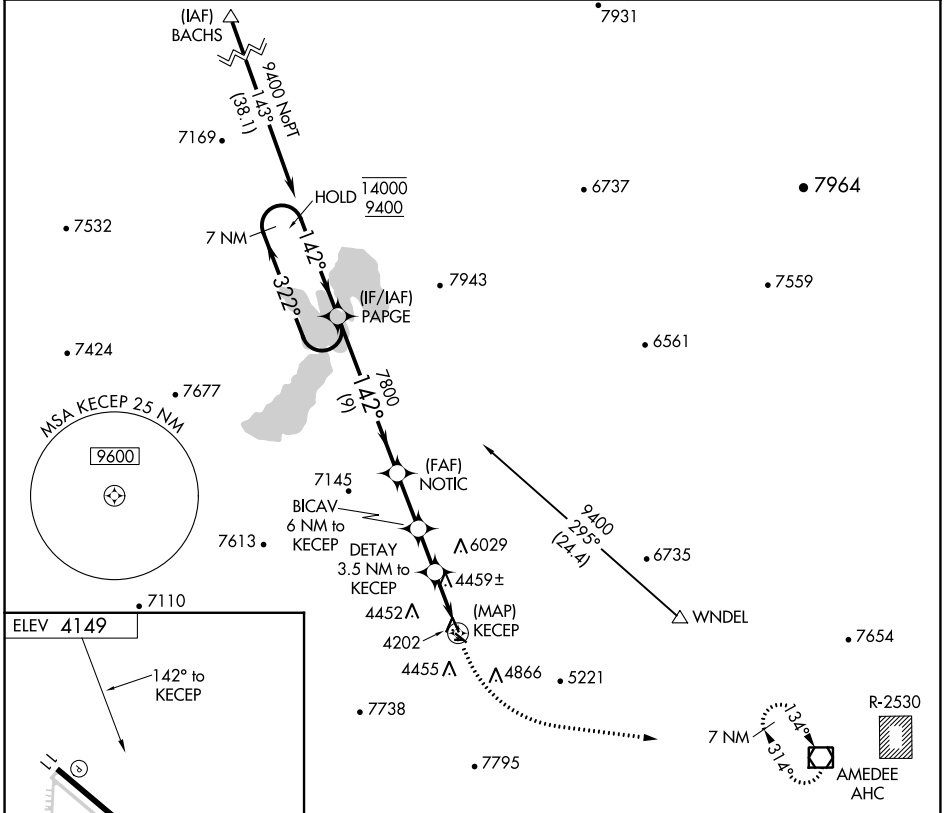
APP CRS	Rwy Idg	N/A
142°	TDZE	N/A
	Apt Elev	4149

RNAV (GPS)-A

SUSANVILLE MUNI (SV E)

RNP APCH.	<p>▽ Circling NA for Cat D southwest of Rwy 11-29. △ NA When local altimeter setting not received, procedure NA. Circling NA to Rwy 7/25.</p>	<p>MISSED APPROACH: Climbing left turn to 14000 direct AHC VOR/DME and hold, continue climb-in-hold to 14000.</p>

AWOS-3 133.8	OAKLAND CENTER 128.8 285.5	UNICOM 122.8 (CTAF)
------------------------	--------------------------------------	-------------------------------



CATEGORY	A	B	C	D
☑ CIRCLING	5260-1¼ 1111 (1200-1¼)	5260-1½ 1111 (1200-1½)	5780-3 1631 (1700-3)	6060-3 1911 (2000-3)

SW-2, 22 FEB 2024 to 21 MAR 2024

SW-2, 22 FEB 2024 to 21 MAR 2024