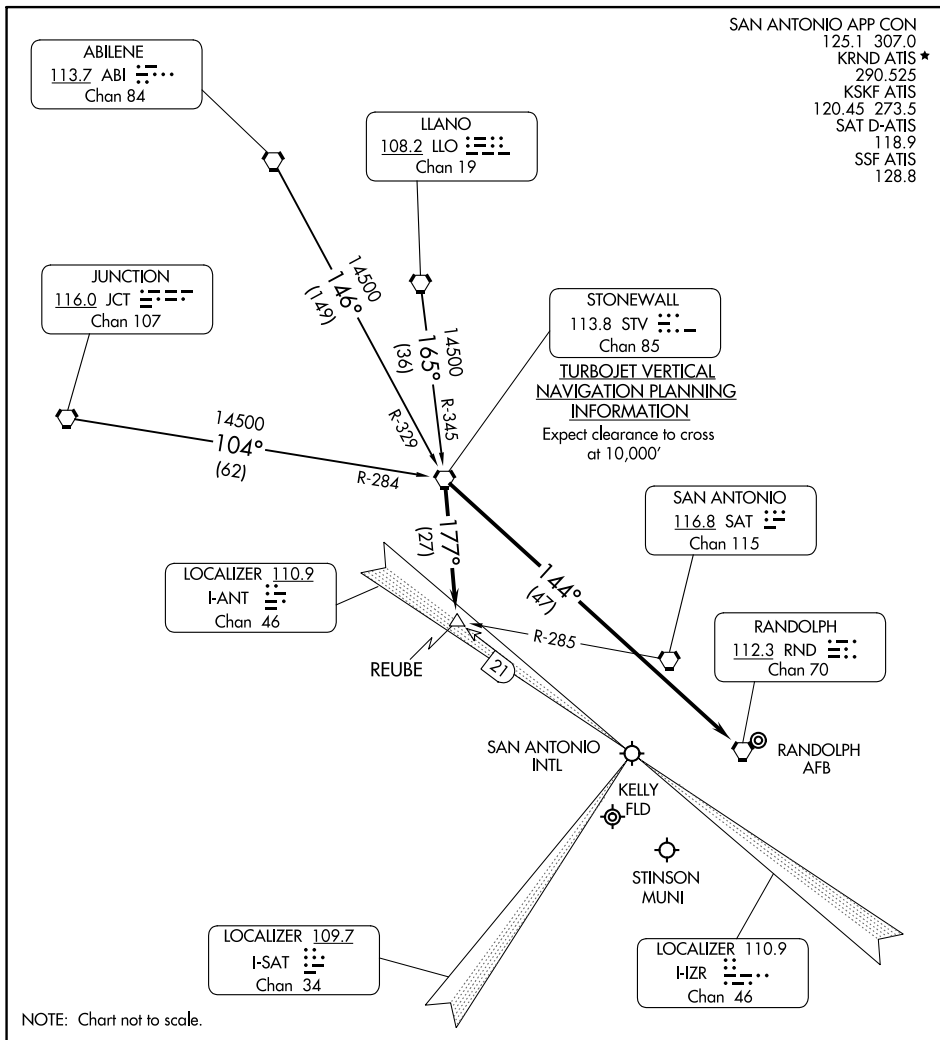


# STONEWALL ONE ARRIVAL

SAN ANTONIO, TEXAS



SAN ANTONIO APP CON  
 125.1 307.0  
 KRND ATIS \*  
 290.525  
 KSKF ATIS  
 120.45 273.5  
 SAT D-ATIS  
 118.9  
 SSF ATIS  
 128.8

STONEWALL  
 113.8 STV  
 Chan 85

**TURBOJET VERTICAL NAVIGATION PLANNING INFORMATION**  
 Expect clearance to cross at 10,000'

SC-3, 22 FEB 2024 to 21 MAR 2024

SC-3, 22 FEB 2024 to 21 MAR 2024

## ARRIVAL ROUTE DESCRIPTION

**ABILENE TRANSITION (ABI.STV1):** From over ABI VORTAC via ABI R-146 and STV R-329 to STV VORTAC. Thence . . . .

**JUNCTION TRANSITION (JCT.STV1):** From over JCT VORTAC via JCT R-104 and STV R-284 to STV VORTAC. Thence . . . .

**LLANO TRANSITION (LLO.STV1):** From over LLO VORTAC via LLO R-165 and STV R-345 to STV VORTAC. Thence . . . .

**ALL AIRPORTS EXCEPT RANDOLPH AIR FORCE BASE:** . . . . From over STV VORTAC via STV R-177 to REUBE INT. Expect radar vectors to final approach course.

**RANDOLPH AIR FORCE BASE:** . . . . From over STV VORTAC via direct RND VORTAC.

# STONEWALL ONE ARRIVAL

SAN ANTONIO, TEXAS