

WAAS CH <b>81824</b> <b>W01A</b>	APP CRS <b>011°</b>	Rwy Idg TDZE <b>253</b> Apt Elev <b>265</b>	<b>6008</b>
--	------------------------	---	-------------

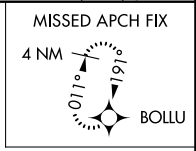
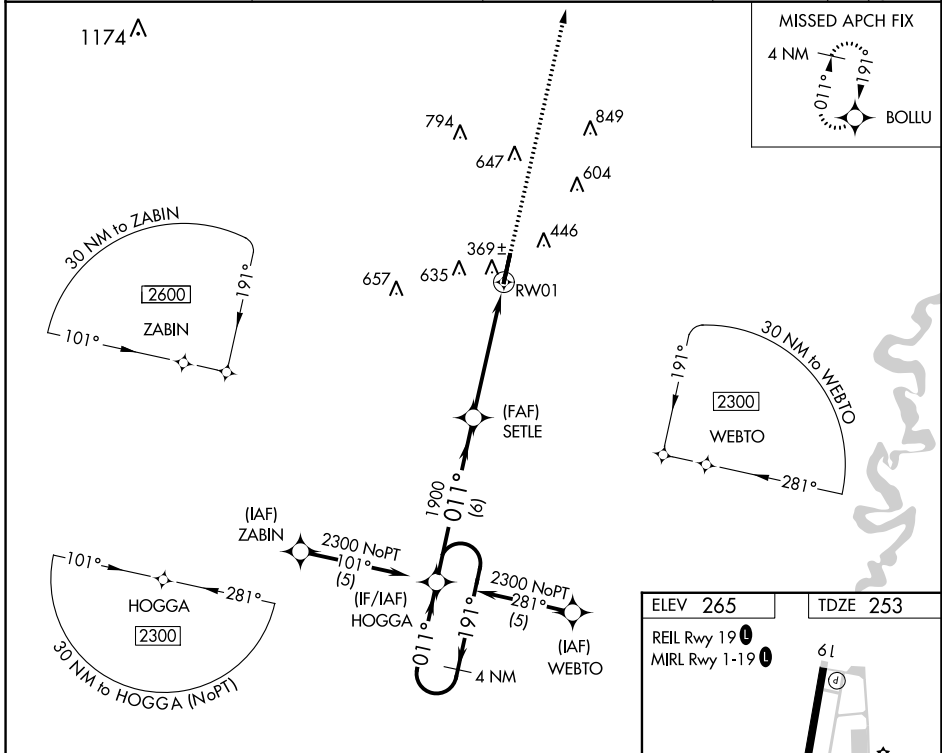
# RNAV (GPS) RWY 1

SEARCY MUNI (SRC)

**⚠** Circling NA for Cats B and C west of Rwy 1-19. DME/DME RNP-0.3 NA. VDP NA with Bill and Hillary Clinton Ntl/Adams Fld altimeter setting. When local altimeter setting not received, use Bill and Hillary Clinton Ntl/Adams Fld altimeter setting: increase LPV DA to 662 feet and all Cats visibility 1/4 SM; increase all MDAs 100 feet and LNAV and Circling Cat C visibility 1/4 SM. For inop ALS, increase LPV visibility to 7/8 SM. For inop ALS, when using Bill and Hillary Clinton Ntl/Adams Fld altimeter setting, increase LPV all Cats visibility to 1/8 SM.

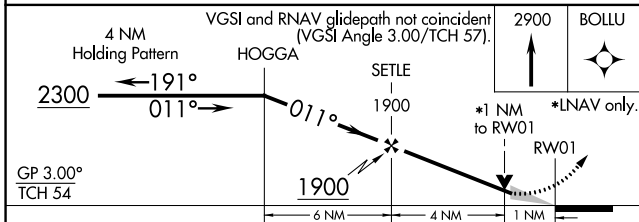
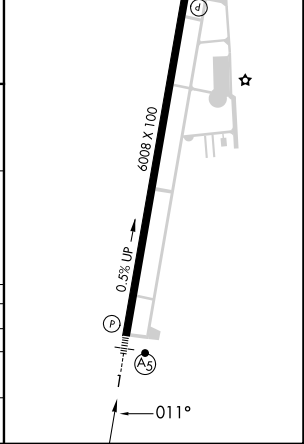
**MALSR** MISSED APPROACH: Climb to 2900 direct BOLLU and hold.

AWOS-3PT <b>128.325</b>	LITTLE ROCK APP CON <b>119.75 291.775</b>	CLNC DEL <b>119.75</b>	UNICOM <b>122.7</b> (CTAF)
----------------------------	--	---------------------------	-------------------------------



ELEV 265	TDZE 253
----------	----------

REIL Rwy 19   
 MIRL Rwy 1-19



CATEGORY	A	B	C	D
LPV DA	573-1/2		320 (400-1/2)	NA
LNAV MDA	620-1/2	367 (400-1/2)	620-5/8 367 (400-5/8)	NA
CIRCLING	760-1	495 (500-1)	780-1/2 515 (600-1/2)	NA

SC-1, 22 FEB 2024 to 21 MAR 2024

SC-1, 22 FEB 2024 to 21 MAR 2024