

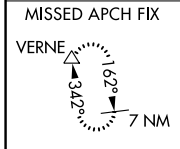
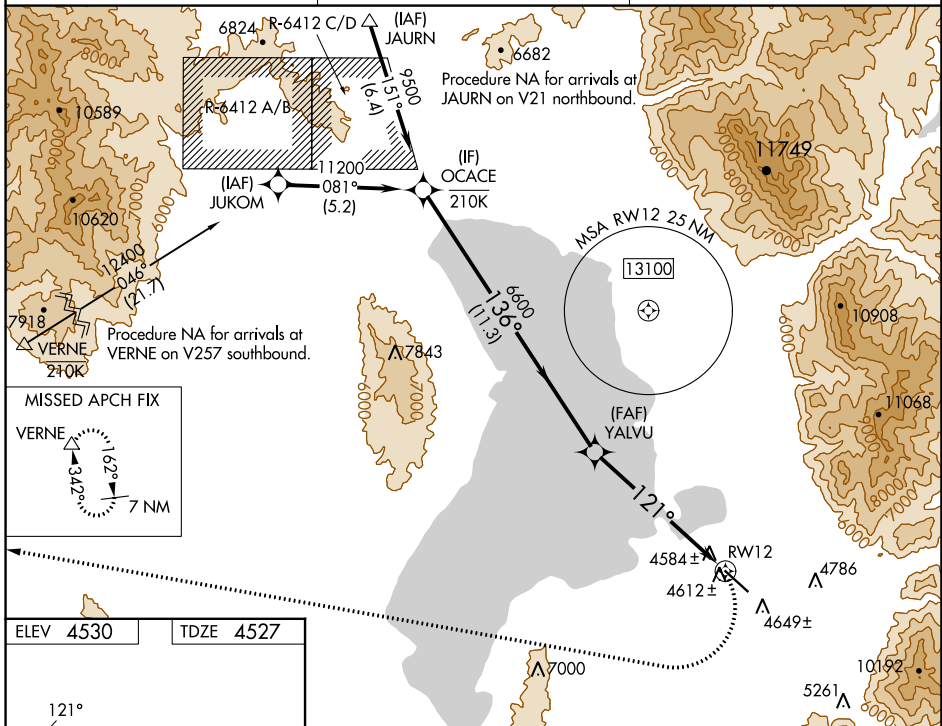
WAAS CH 78042 W12A	APP CRS 121°	Rwy Idg TDZE 4527 Apt Elev 4530
---------------------------------	------------------------	-----------------------------------------------------

RNAV (GPS) Y RWY 12

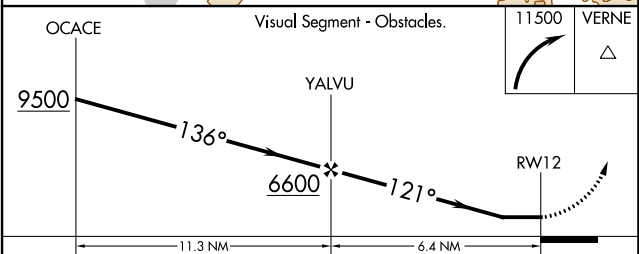
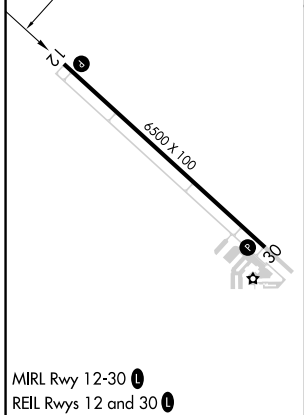
SPANISH FORK MUNI/WOODHOUSE FLD (SPK)

RNP APCH-GPS.	MISSED APPROACH: (Do not exceed 185K until turn completion) Climbing right turn to 11500 direct VERNE and hold.
<p>▼ Rwy 12 helicopter visibility reduction below 3/4 SM NA.</p> <p>▲ NA When local altimeter setting not received, use Provo altimeter setting and increase all MDAs 20 feet.</p> <p>☁ -21°C</p>	

AWOS-3PT 119.275	SALT LAKE CITY APP CON 118.85 233.7	CTAF 122.9
----------------------------	-----------------------------------------------	----------------------



ELEV 4530	TDZE 4527
------------------	------------------



CATEGORY	A	B	C	D
LP MDA	6040-1¼ 1513 (1600-1¼)	6040-1½ 1513 (1600-1½)	6040-3	1513 (1600-3)
LNAV MDA	6160-1¼ 1633 (1700-1¼)	6160-1½ 1633 (1700-1½)	6160-3	1633 (1700-3)
CIRCLING	6160-1¼ 1630 (1700-1¼)	6160-1½ 1630 (1700-1½)	6160-3	1630 (1700-3)

SW-4, 22 FEB 2024 to 21 MAR 2024

SW-4, 22 FEB 2024 to 21 MAR 2024