

WAAS CH 77711	APP CRS 130°	Rwy Idg TDZE Apt Elev	6144 10 10
W13A			

RNAV (GPS) RWY 13

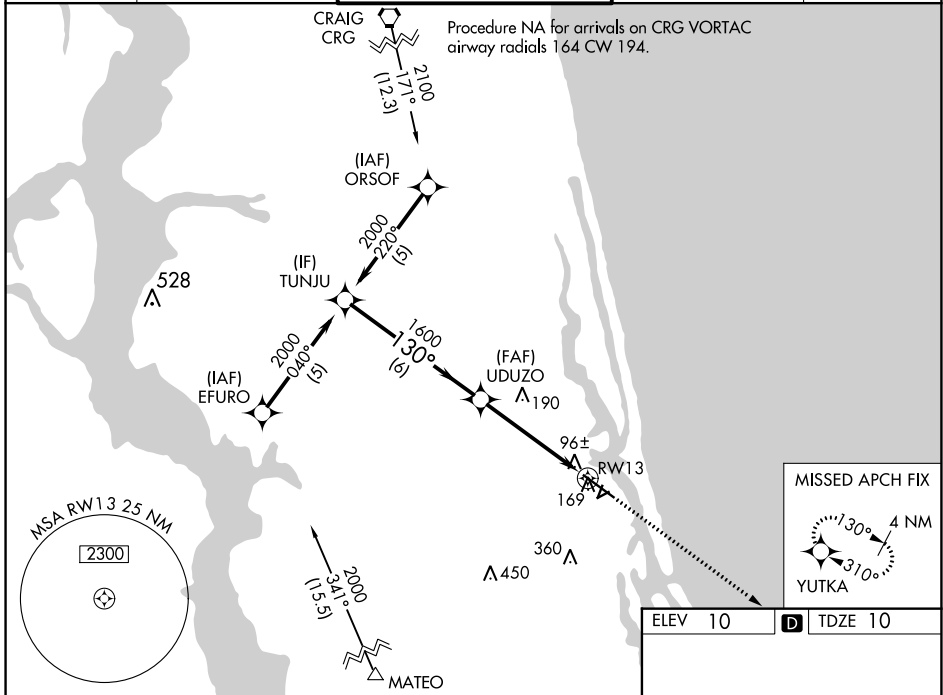
NORTHEAST FLORIDA RGNL (SGJ)

RNP APCH

▼ Baro-VNAV NA when using Jacksonville NAS (Towers Fld) altimeter setting. For uncompensated Baro-VNAV systems, LNAV/VNAV NA below -15°C (5°F) or above 54°C (130°F). Rwy 13 helicopter visibility reduction below ¼ SM NA. When local altimeter setting not received, use Jacksonville NAS (Towers Fld) altimeter setting; increase all DA 57 feet and all MDA 60 feet. Increase LPV and LNAV/VNAV all Cats, LNAV Cat C and Circling Cat C/D visibility ¼ SM. Circling Rwy 2, 6 NA at night.

MISSED APPROACH:
Climb to 2000 direct YUTKA and hold.

ATIS 119.625	JACKSONVILLE APP CON 120.75	ST AUGUSTINE TOWER ★ 127.625 (CTAF) 269.475	GND CON 121.175 251.125	UNICOM 122.95
------------------------	---------------------------------------	---	-----------------------------------	-------------------------



SE-3, 22 FEB 2024 to 21 MAR 2024

SE-3, 22 FEB 2024 to 21 MAR 2024

ELEV 10	TDZE 10
---------	---------

Procedure Turn NA	TUNJU	UDUZO	2000 YUTKA
GP 3.00° TCH 58	VGS1 and RNAV glidepath not coincident (VGS1 Angle 3.00/TCH 44).		
CATEGORY	A	B	C
LPV DA		357-1¼	347 (400-1¼)
LNAV/ VNAV DA		391-1¼	381 (400-1¼)
LNAV MDA	460-1	450 (500-1)	460-1½ 450 (500-1½)
CIRCLING	520-1 510 (600-1)	580-1 570 (600-1)	660-1¾ 650 (700-1¾) 780-2½ 770 (800-2½)

