

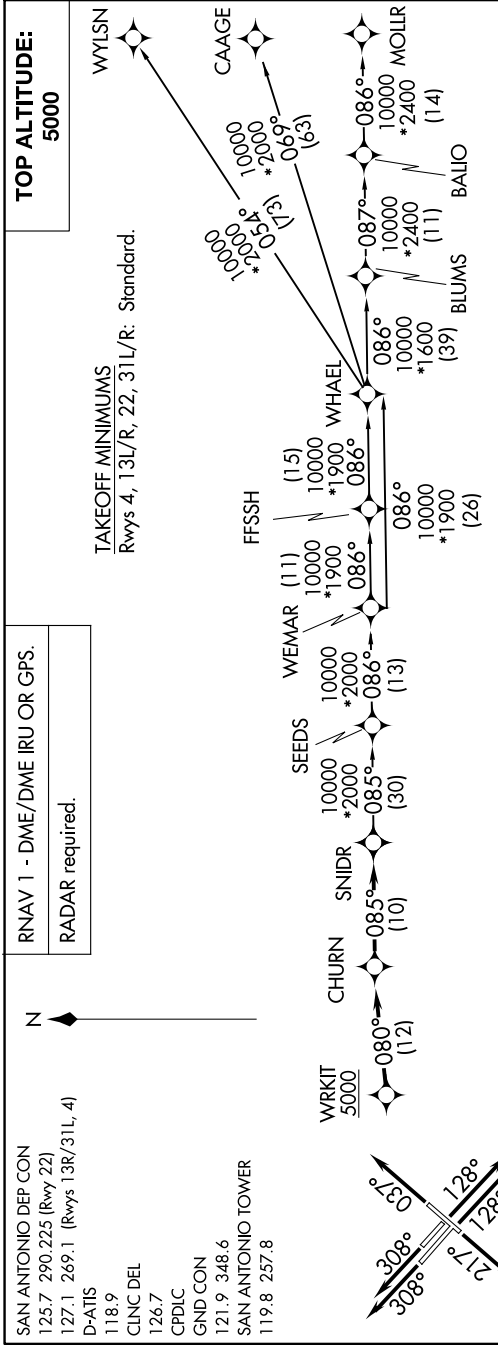
(SNIDR1.SNIDR) 24025

AL-369 (FAA)

SAN ANTONIO INTL (SAT)
SAN ANTONIO, TEXAS

SNIDR ONE DEPARTURE (RNAV)

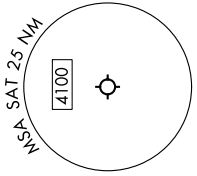
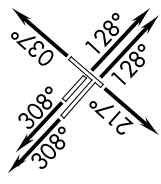
SC-3, 22 FEB 2024 to 21 MAR 2024



DEPARTURE ROUTE DESCRIPTION

TAKEOFF RUNWAY 4: Climb on heading 037° or as assigned by ATC, for vectors to WRKIT, thence. . . .
 TAKEOFF RUNWAY 13L/R: Climb on heading 128° or as assigned by ATC, for vectors to WRKIT, thence. . . .
 TAKEOFF RUNWAY 22: Climb on heading 217° or as assigned by ATC, for vectors to WRKIT, thence. . . .
 TAKEOFF RUNWAY 31L/R: Climb on heading 308° or as assigned by ATC, for vectors to WRKIT, thence. . . .
 . . . on track 080° to CHURN, then on track 085° to SNIDR, then on transition. Maintain 5000.
 BLUMS TRANSITION (SNIDR1.BLUMS)
 CAAGE TRANSITION (SNIDR1.CAAGE)
 FFSSH TRANSITION (SNIDR1.FFSSH)
 MOLLR TRANSITION (SNIDR1.MOLLR)
 SEEDS TRANSITION (SNIDR1.SEEDS)
 WEMAR TRANSITION (SNIDR1.WEMAR)
 WHAEL TRANSITION (SNIDR1.WHAEL)
 WYLSN TRANSITION (SNIDR1.WYLSN)

SAN ANTONIO DEP CON
 125.7 290.225 (Rwy 22)
 127.1 269.1 (Rwys 13R/31L, 4)
 D-ATIS
 118.9
 CLNC DEL
 126.7
 CPDLC
 GND CON
 121.9 348.6
 SAN ANTONIO TOWER
 119.8 257.8



Note: Chart not to scale.

SNIDR ONE DEPARTURE (RNAV)
(SNIDR1.SNIDR) 25JAN24

SAN ANTONIO, TEXAS
SAN ANTONIO INTL (SAT)

SC-3, 22 FEB 2024 to 21 MAR 2024