

# SPIDR FOUR ARRIVAL (RNAV)

NE-3, 22 FEB 2024 to 21 MAR 2024

POTOMAC APP CON  
126.75 307.2  
ATIS  
119.15 263.025

MONTEBELLO  
MOL



ZUMAT

13000  
\*4500  
(14)

DXOON

13000  
\*2800  
(13)

REDNG

13000  
\*1800  
(6)

HEMME

12000  
280K  
11000

SPIDR  
8000

8000  
\*1700  
(12)

DEEER

4000  
\*1600  
(9)

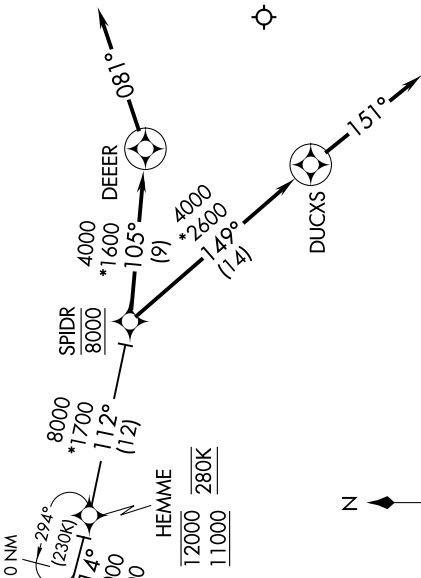
DUCKS

4000  
\*1600  
(14)

1081°

157°

- NOTE: RADAR required.
- NOTE: RNAV 1.
- NOTE: DME/DME/IRU or GPS required.
- NOTE: Turbojet aircraft only.
- NOTE: Maintain last ATC assigned altitude until cleared to "descend via the SPIDR STAR".
- NOTE: ARTCC will issue landing direction assignment (north or south) and Potomac TRACON will issue runway assignments.



## ARRIVAL ROUTE DESCRIPTION

MONTEBELLO TRANSITION (MOL.SPIDR4)

LANDING NORTH RWYS 2, 34: From SPIDR on track 149° to DUCKS, then on heading 151° or as assigned by ATC. Expect RADAR vectors to final approach course.

LANDING SOUTH RWYS 16, 20: From SPIDR on track 105° to DEEER, then on heading 081° or as assigned by ATC. Expect RADAR vectors to final approach course.

NOTE: Chart not to scale.

NE-3, 22 FEB 2024 to 21 MAR 2024

# SPIDR FOUR ARRIVAL (RNAV)

(SPIDR.SPIDR4) 10SEP20