

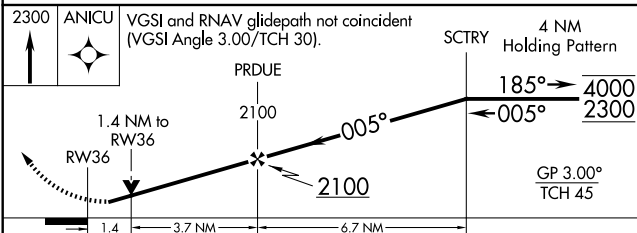
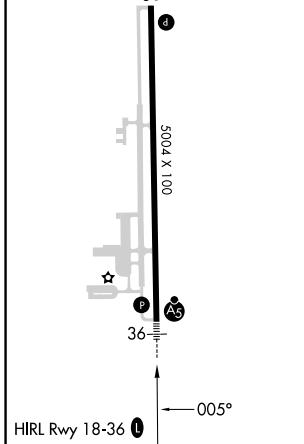
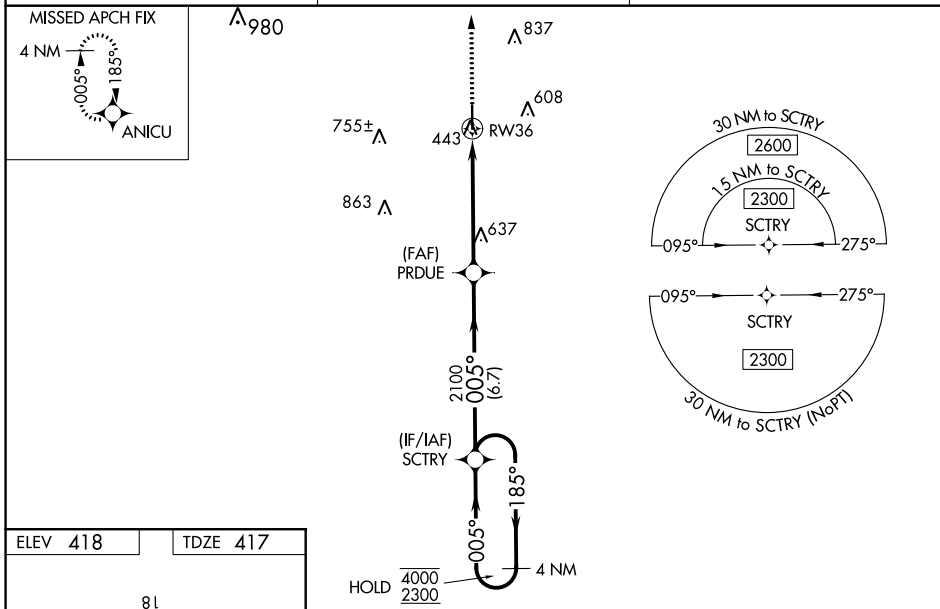
WAAS CH 86805 W36A	APP CRS 005°	Rwy ldg TDZE Apt Elev	5004 417 418
--	------------------------	-----------------------------	---

RNAV (GPS) RWY 36

PERRY-HOUSTON COUNTY (PXE)

RNP APCH-GPS.	MALSRL	MISSED APPROACH: Climb to 2300 direct ANICU and hold.
---------------	--------	--

AWOS-3 123.825	ATLANTA APP CON ★ 124.2 279.6	UNICOM 122.725 (CTAF) 0
--------------------------	---	-----------------------------------



CATEGORY	A	B	C	D
LPV DA		667- ³ / ₄	250 (300- ³ / ₄)	
LNAV/VNAV DA		667- ³ / ₄	250 (300- ³ / ₄)	
LNAV MDA	900- ³ / ₄	483 (500- ³ / ₄)	900-1	483 (500-1)
C CIRCLING	900-1	482 (500-1)	1140-2 722 (800-2)	1280-2 ³ / ₄ 862 (900-2 ³ / ₄)

SE-4, 22 FEB 2024 to 21 MAR 2024

SE-4, 22 FEB 2024 to 21 MAR 2024