

(BARI2.BARII) 19227

BARII TWO DEPARTURE (RNAV)

AL-5052 (FAA)

OAKLAND COUNTY INTL (PTK)

PONTIAC, MICHIGAN

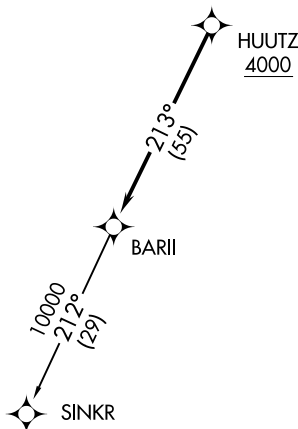
**TOP ALTITUDE:
ASSIGNED BY ATC**

ATIS
 125.025
 CLNC DEL
 118.25
 GND CON
 121.9
 PONTIAC TOWER ★
 120.5 (CTAF)
 DETROIT DEP CON
 132.35 284.0



TAKEOFF MINIMUMS:

Rwy's 9L/R, 27L/R: Standard.
 Rwy's 18, 36: NA-Environmental.



NOTE: RNAV 1.
 NOTE: RADAR required.
 NOTE: DME/DME/IRU or GPS required.
 NOTE: Turbojet departures at/above 10000, maintain 280K until advised by ATC.

NOTE: Chart not to scale.

EC-1, 22 FEB 2024 to 21 MAR 2024

EC-1, 22 FEB 2024 to 21 MAR 2024



DEPARTURE ROUTE DESCRIPTION

TAKEOFF RUNWAYS 9L/R: Climb on heading 095° or as assigned for RADAR vectors to cross HUUTZ at or above 4000, thence....

TAKEOFF RUNWAYS 27L/R: Climb on heading 275° or as assigned for RADAR vectors to cross HUUTZ at or above 4000, thence....

...on track 213° to BARII, then on (transition). Maintain ATC assigned altitude, expect filed altitude 10 minutes after departure.

SINKR TRANSITION (BARI2.SINKR):

BARII TWO DEPARTURE (RNAV)

(BARI2.BARII) 15AUG19

PONTIAC, MICHIGAN

OAKLAND COUNTY INTL (PTK)