

APP CRS	Rwy Idg	<b>5395</b>
<b>051°</b>	TDZE	<b>716</b>
	Apt Elev	<b>721</b>

# RNAV (GPS) RWY 5

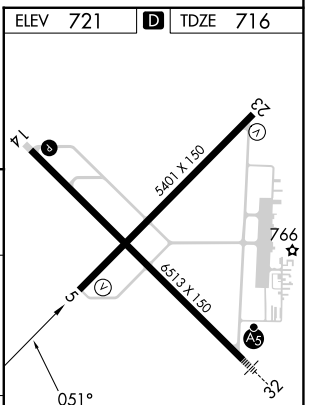
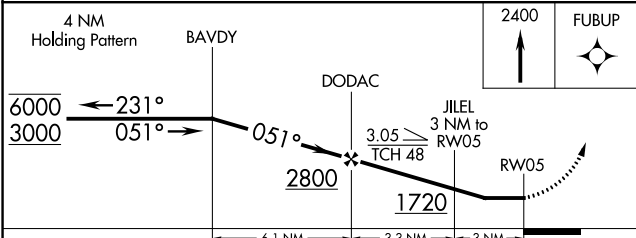
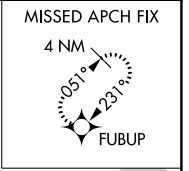
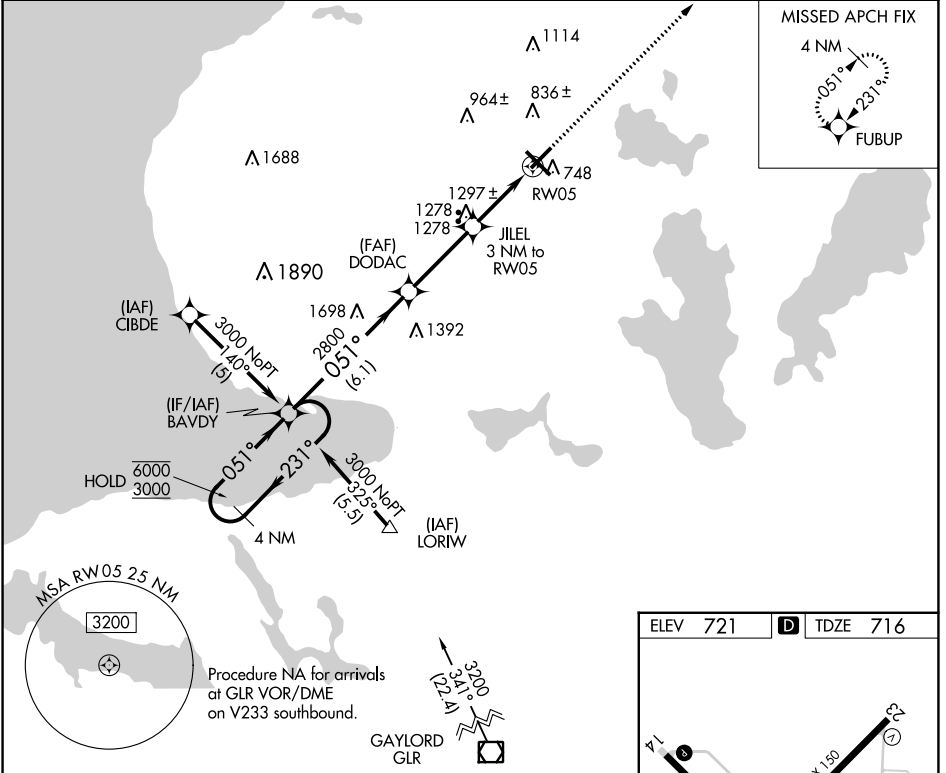
PELLSTON RGNL/EMMET COUNTY (PLN)

RNP APCH.

Straight-in Rwy 5 NA at night, Circling Rwy 5, 14, 23 NA at night.  
 Rwy 5 helicopter visibility reduction below 1 SM NA.  
 When local altimeter setting not received, use Harbor Springs altimeter setting and increase all MDA 40 feet, increase LNAV Cat A visibility 1/4 SM.

MISSED APPROACH: Climb to 2400 direct FUBUP and hold.

ASOS <b>119.025</b>	MINNEAPOLIS CENTER <b>134.6 354.05</b>	UNICOM <b>123.0 (CTAF) 0</b>
------------------------	---	---------------------------------



CATEGORY	A	B	C	D
LNAV MDA	1560-1 844 (900-1)	1560-1¼ 844 (900-1¼)	1560-2½ 844 (900-2½)	1560-2¾ 844 (900-2¾)
CIRCLING	1560-1¼	839 (900-1¼)	1560-2½ 839 (900-2½)	1660-3 939 (1000-3)

HIRL Rwy 14-32 0  
 MRL Rwy 5-23 0  
 REIL Rws 5, 14, and 23 0

EC-1, 22 FEB 2024 to 21 MAR 2024

EC-1, 22 FEB 2024 to 21 MAR 2024