


LOM PH 332	APP CRS 043°	Rwy Idg 5104
		TDZE 647
		Apt Elev 650

NDB RWY 4

ST CLAIR COUNTY INTL (PHN)

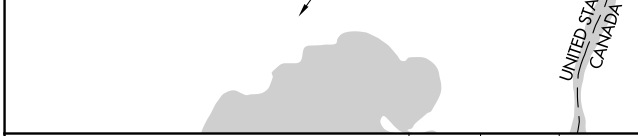
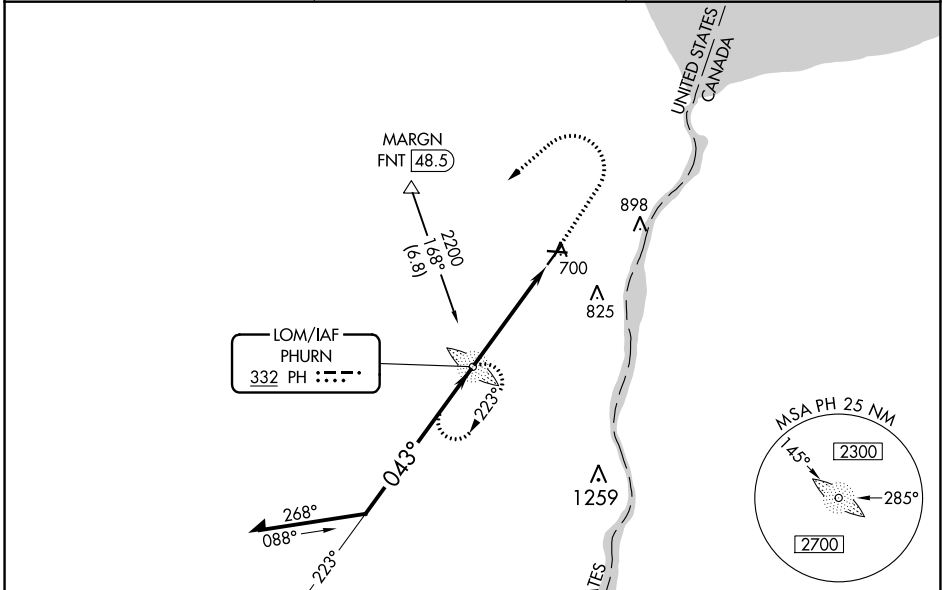
▽ When local altimeter setting not received, use Troy altimeter setting and increase all MDA 100 feet, increase S-4 and Circling Cats C and D visibility ¼. For inoperative MALSR, increase S-4 Cats C and D visibility to 1¾ mile. For inoperative MALSR when using Troy altimeter setting, increase S-4 Cat D visibility to 1¾ mile. Night landing: Rwy 10, 22, 28 NA.

MALSR

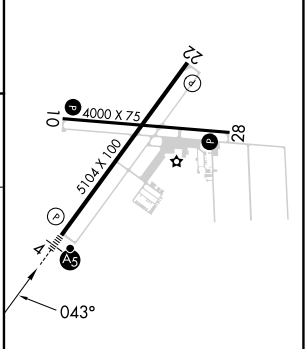


MISSED APPROACH:
Climb to 2500 then climbing left turn to 4000 direct PHURN LOM and hold.

AWOS-3 118.375	SELFRIDGE APP CON ★ 119.6 391.9	UNICOM 123.05 (CTAF) ①
--------------------------	---	----------------------------------



ELEV 650	TDZE 647
----------	----------



Remain within 10 NM

2200	PH LOM	2200
223°	043°	223°
3.10° TCH 50		
4.6 NM		

HIRL Rwy 4-22 ①
MIRL Rwy 10-28 ①
REIL Rws 10, 22, and 28 ①

FAF to MAP 4.6 NM

CATEGORY	A	B	C	D
S-4	1160-¾ 513 (600-¾)		1160-1 513 (600-1)	
C CIRCLING	1160-1 510 (600-1)		1260-1¾ 610 (700-1¾)	1260-2 610 (700-2)

Knots	60	90	120	150	180
Min:Sec	4:36	3:04	2:18	1:50	1:32

EC-1, 22 FEB 2024 to 21 MAR 2024

EC-1, 22 FEB 2024 to 21 MAR 2024