


(BLUSH2.BLUSH) 23334

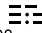
# BLUSH TWO DEPARTURE


AL-759 (FAA)

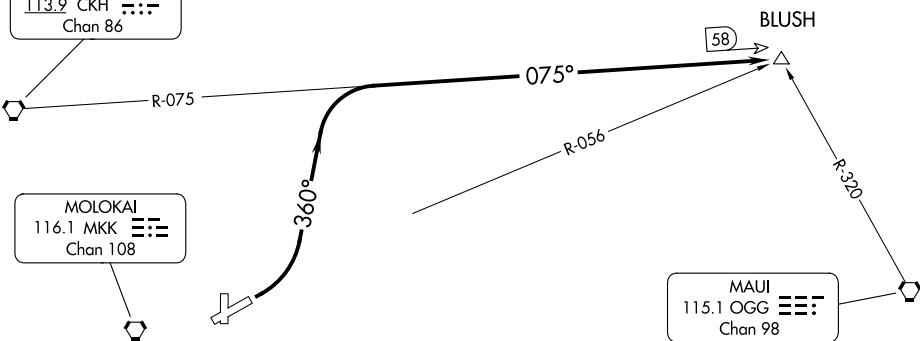
MOLOKAI (MKK) (PHMK)  
KAUNAKAKAI, HAWAII

ATIS  
128.2  
GND CON  
121.9  
MOLOKAI TOWER ★  
125.7 306.2  
HCF CENTER  
124.1 317.5

KOKO HEAD  
113.9 CKH   
Chan 86

MOLOKAI  
116.1 MKK   
Chan 108

MAUI  
115.1 OGG   
Chan 98



PAC, 25 JAN 2024 to 21 MAR 2024

PAC, 25 JAN 2024 to 21 MAR 2024

### TAKEOFF MINIMUMS

Rwy 17, 23, 35: NA-ATC.

Rwy 5: 300-1 with minimum climb of 325' per NM to 1500 or standard with minimum climb of 540' per NM to 800.

NOTE: Chart not to scale.



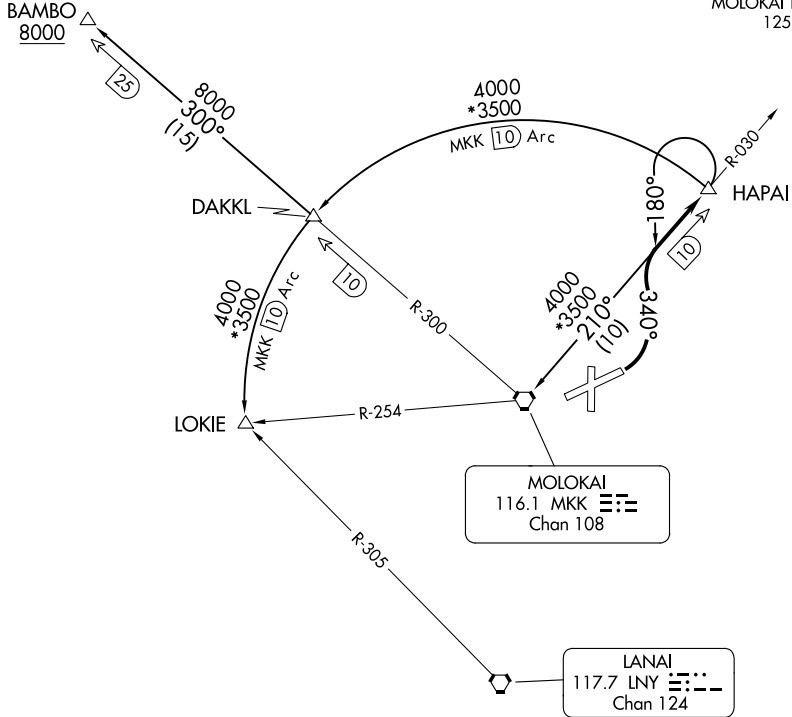
### DEPARTURE ROUTE DESCRIPTION

TAKEOFF RUNWAY 5: Climbing left turn to 5000 on heading 360° and CKH VORTAC R-075 to BLUSH INT/CKH 58 DME.

BLUSH TWO DEPARTURE  
(BLUSH2.BLUSH) 29MAY14

KAUNAKAKAI, HAWAII  
MOLOKAI (MKK) (PHMK)

HCF CENTER  
124.1 317.5  
ATIS  
128.2  
GND CON  
121.9  
MOLOKAI TOWER\*  
125.7 306.2



TAKEOFF MINIMUMS

Rwys 17, 23, 35: NA-ATC.

Rwy 5: 300-1 with minimum climb of 325' per NM to 1500 or standard with minimum climb of 540' per NM to 800.

NOTE: DME required.

NOTE: Chart not to scale



DEPARTURE ROUTE DESCRIPTION

**TAKEOFF RUNWAY 5:** Climbing left turn heading 340° and MKK VORTAC R-030 to HAPAI/MKK 10 DME, thence. . . .

. . . .on assigned transition.

**BAMBO TRANSITION (HAPAI3.BAMBO):** From over HAPAI/MKK 10 DME on MKK VORTAC 10 DME Arc CCW to DAKKL/MKK 10 DME, then on MKK R-300 to BAMBO/MKK 25 DME.

**LOKIE TRANSITION (HAPAI3.LOKIE):** From over HAPAI/MKK 10 DME on MKK VORTAC 10 DME Arc CCW to LOKIE INT/MKK 10 DME.

**MOLOKAI TRANSITION (HAPAI3.MKK):** From over HAPAI/MKK 10 DME, left turn heading 180° and MKK R-030 to MKK VORTAC.

KALAE ONE DEPARTURE (RNAV)  
(KALAE1 .KALAE) 25FEB21

(KALAE1 .KALAE) 21056  
KALAE ONE DEPARTURE (RNAV)

AL-759 (FAA)

MOLOKAI (MIKK) (PHMIK)  
KAUNAKAKAI HAWAII

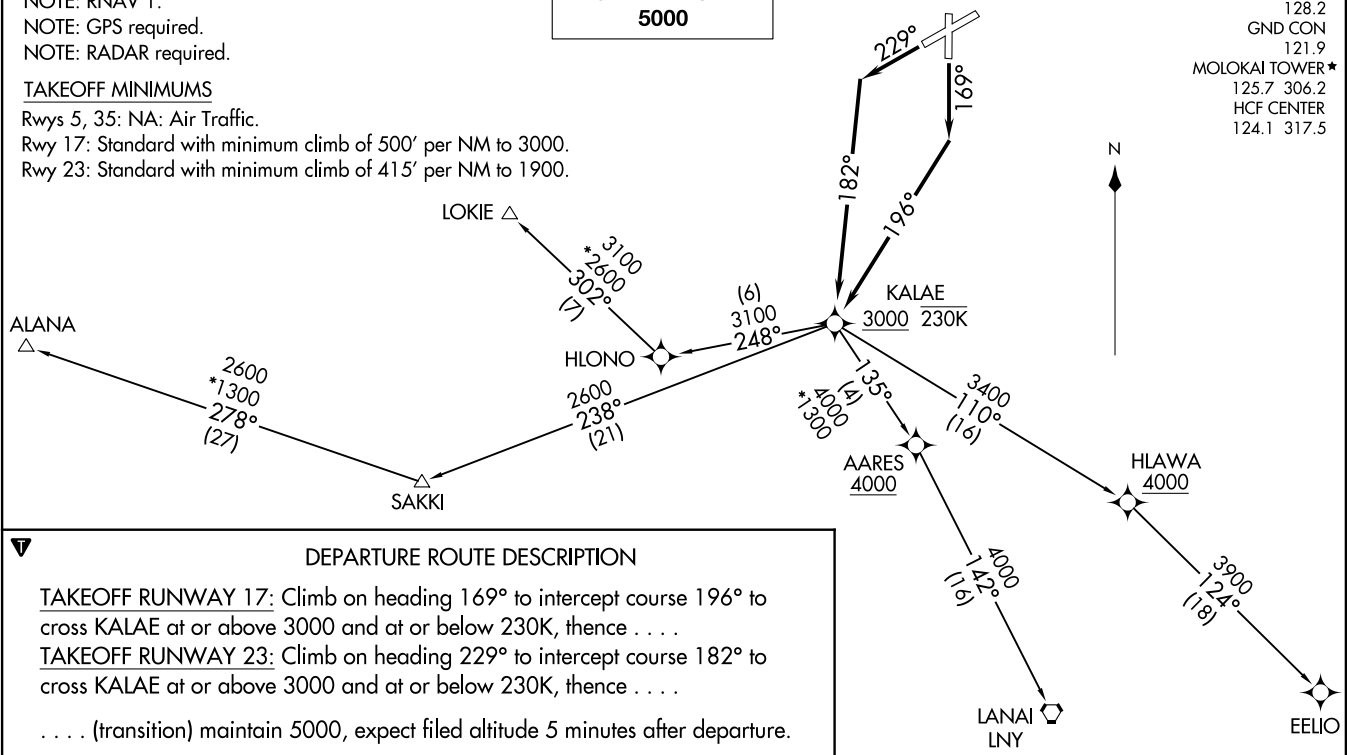
ATIS 128.2  
GND CON 121.9  
MOLOKAI TOWER★ 125.7 306.2  
HCF CENTER 124.1 317.5

**TOP ALTITUDE:  
5000**

NOTE: RNAV 1.  
NOTE: GPS required.  
NOTE: RADAR required.

**TAKEOFF MINIMUMS**

Rwys 5, 35: NA: Air Traffic.  
Rwy 17: Standard with minimum climb of 500' per NM to 3000.  
Rwy 23: Standard with minimum climb of 415' per NM to 1900.



**DEPARTURE ROUTE DESCRIPTION**

TAKEOFF RUNWAY 17: Climb on heading 169° to intercept course 196° to cross KALAE at or above 3000 and at or below 230K, thence . . .

TAKEOFF RUNWAY 23: Climb on heading 229° to intercept course 182° to cross KALAE at or above 3000 and at or below 230K, thence . . .

. . . (transition) maintain 5000, expect filed altitude 5 minutes after departure.

ALANA TRANSITION (KALAE1 .ALANA)

EELIO TRANSITION (KALAE1 .EELIO)

LANAI TRANSITION (KALAE1 .LNY)

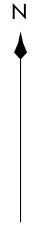
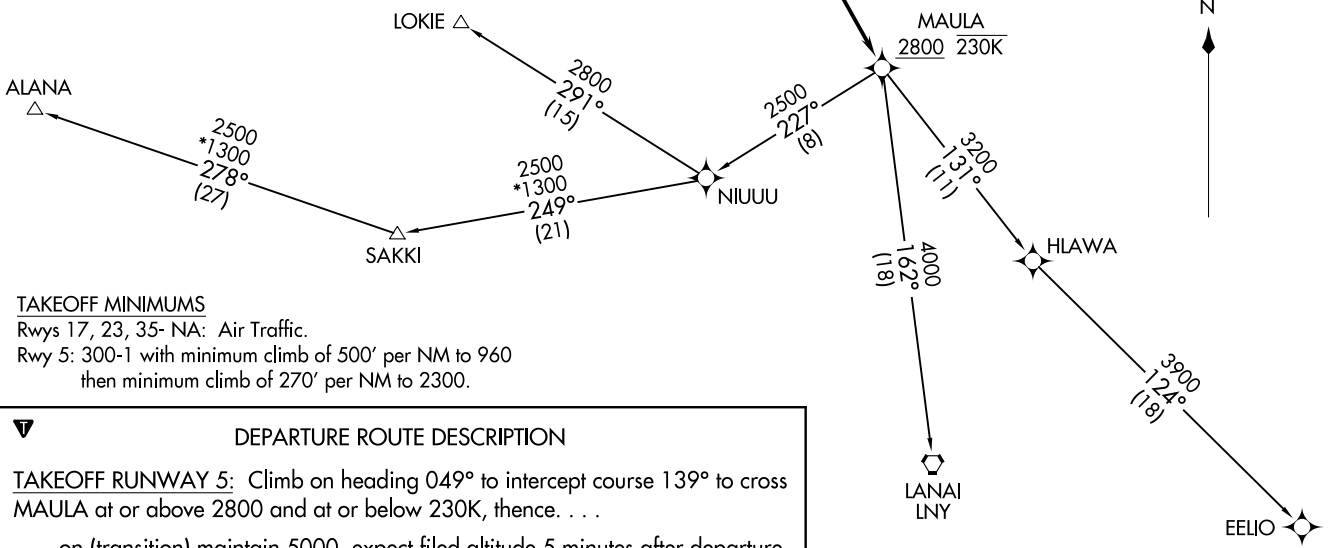
LOKIE TRANSITION (KALAE1 .LOKIE)

NOTE: Chart not to scale.

KAUNAKAKAI HAWAII  
MOLOKAI (MIKK) (PHMIK)

**TOP ALTITUDE:  
5000**

ATIS  
128.2  
GND CON  
121.9  
MOLOKAI TOWER\*  
125.7 306.2  
HCF CENTER  
124.1 317.5



**TAKEOFF MINIMUMS**  
 Rwys 17, 23, 35- NA: Air Traffic.  
 Rwy 5: 300-1 with minimum climb of 500' per NM to 960  
 then minimum climb of 270' per NM to 2300.

**▼ DEPARTURE ROUTE DESCRIPTION**

TAKEOFF RUNWAY 5: Climb on heading 049° to intercept course 139° to cross MAULA at or above 2800 and at or below 230K, thence. . . .  
 . . . .on (transition) maintain 5000, expect filed altitude 5 minutes after departure.

ALANA TRANSITION (MAULA1.ALANA)  
EELIO TRANSITION (MAULA1.EELIO)  
LANAI TRANSITION (MAULA1.LNY)  
LOKIE TRANSITION (MAULA1.LOKIE)

NOTE: RNAV 1.  
 NOTE: GPS required.  
 NOTE: RADAR required.  
 NOTE: Chart not to scale

MAULA ONE DEPARTURE (RNAV)  
 (MAULA1.MAULA) 25FEB21

MAULA ONE DEPARTURE (RNAV)  
 (MAULA1.MAULA) 21056  
 AL-759 (FAA)

MOLOKAI (MIKI) (PHMIK)  
 KAUNAKAKAI, HAWAII