

WAAS CH <b>69204</b> <b>W33A</b>	APP CRS <b>336°</b>	Rwy Idg <b>5950</b> TDZE <b>4316</b> Apt Elev <b>4317</b>
--	------------------------	---

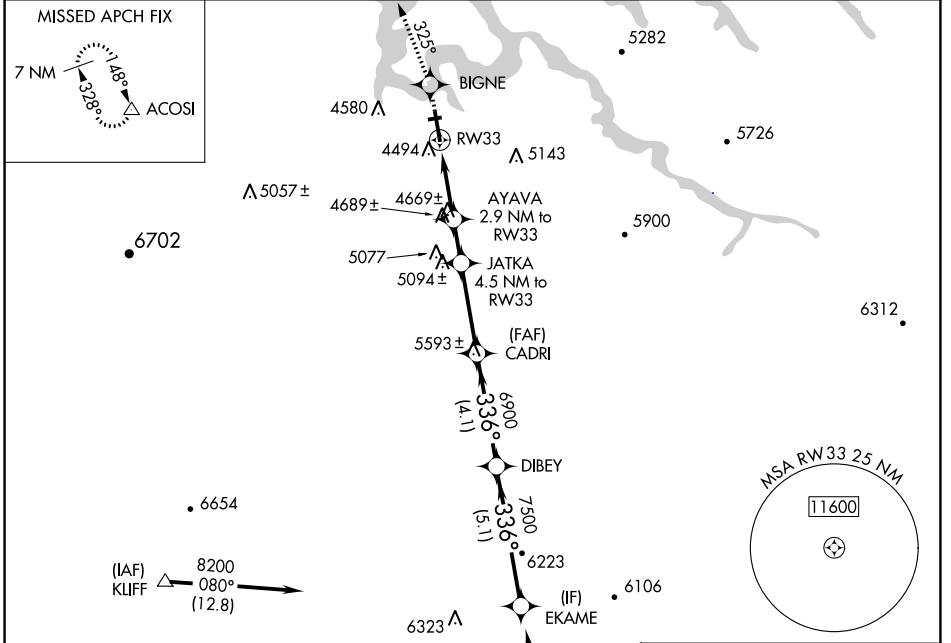
# RNAV (GPS) RWY 33

PAGE MUNI (PGA)

▼ For uncompensated Baro-VNAV systems, LNAV/VNAV NA below -23°C (-9°F) or above 41°C (105°F). DME/DME RNP-0.3 NA. Circling NA to Rwy 7-25.

MISSED APPROACH: Climb to 8500 direct BIGNE and via 325° track to ACOSI and hold, continue climb-in-hold to 8500.

ASOS <b>120.625</b>	DENVER CENTER <b>127.55 256.875</b>	UNICOM <b>122.8 (CTAF)</b>
------------------------	--	-------------------------------



SW-4, 22 FEB 2024 to 21 MAR 2024

SW-4, 22 FEB 2024 to 21 MAR 2024

ELEV 4317 TDZE 4316

Procedure NA for arrivals at CELAY via V208 southbound.

8500	BIGNE	ACOSI	VGSI and RNAV glidepath not coincident (VGSI Angle 3.00/TCH 30).			EKAME
↑	325° tr	△	JATKA	CADRI	DIBEY	8200
*LNAV only.		AYAVA	JATKA			Procedure Turn NA
		2.9 NM to RW33	4.5 NM to RW33			GP 3.00° TCH 50
	*1.8 NM to RW33					
	5280	5800	6900	7500	8200	
	1.8 NM	1.1 NM	1.6 NM	3.3 NM	4.1 NM	5.1 NM
CATEGORY	A	B	C	D		
LPV DA	4566-1		250 (300-1)			
LNAV/VNAV DA	4744-1½		428 (500-1½)			
LNAV MDA	4920-1	604 (700-1)	4920-1¾	604 (700-1¾)	4920-2	604 (700-2)
CIRCLING	4920-1	603 (700-1)	5080-2¼	763 (800-2¼)	5360-3	1043 (1100-3)

