

WAAS CH 42741 W 11A	APP CRS 111°	Rwy Idg 4982 TDZE 128 Apt Elev 128
---	------------------------	---

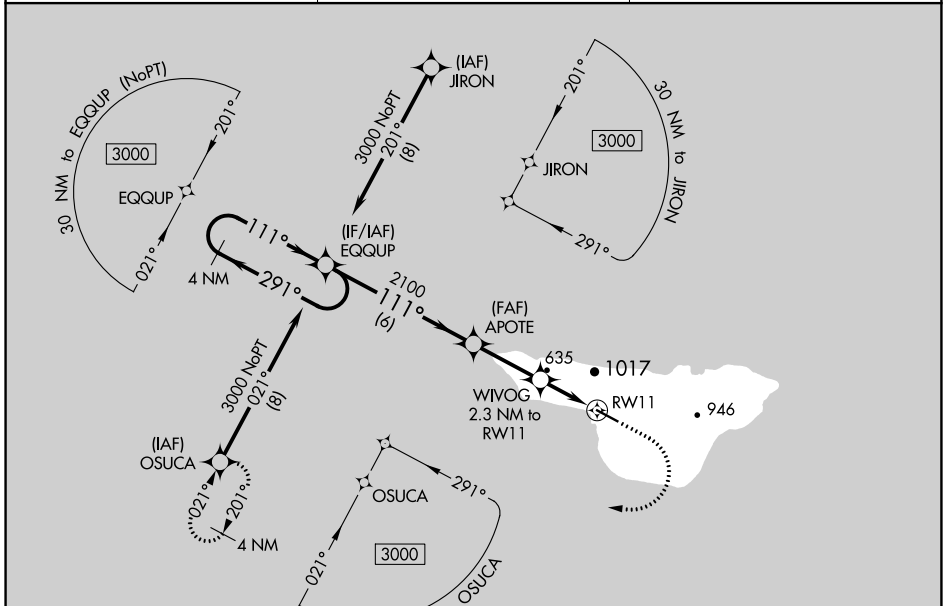
RNAV (GPS) RWY 11

ST GEORGE (PBV) (PAPB)

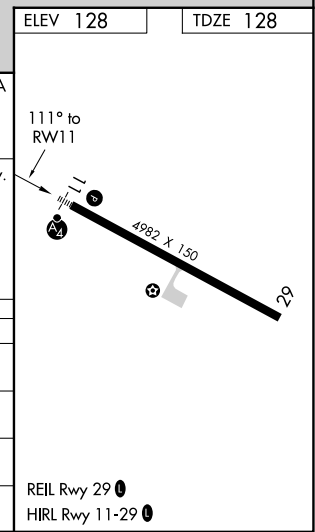
⚠ For uncompensated Baro-VNAV systems, LNAV/VNAV NA below -14°C (7°F) or above 47°C (117°F). DME/DME RNP-0.3 NA. Circling NA north of Rwy 11-29. Inop table does not apply to LPV all Cats and LNAV Cat A. For inop ALS, increase LNAV/VNAV all Cats visibility to 2½ SM. For inop ALS, increase LNAV Cat C visibility to 2½ SM.

MALSF
 MISSED APPROACH: Climb to 600 then climbing right turn to 3000 direct OSUCA and hold.

ASOS 135.45	ANCHORAGE CENTER 119.1 339.8	CTAF 122.8
-----------------------	--	----------------------



	ELEV 128		TDZE 128	
	4 NM Holding Pattern		600	3000 OSUCA
	EQQUP		WIVOG 2.3 NM to RWY 11	
	APOTE		*LNAV only.	
	3000 ← 291°		RWY 11	
	111° →		*1060	
	GP 3.60°			
	TCH 56			
	6 NM		2.7 NM	
			2.3 NM	
CATEGORY	A	B	C	D
LPV DA		428-1 300 (300-1)		NA
LNAV/VNAV DA		957-2 829 (900-2)		NA
LNAV MDA	900-1	772 (800-1)	900-2 772 (800-2)	NA
CIRCLING	900-1 772 (800-1)	980-1¼ 852 (900-1¼)	980-2½ 852 (900-2½)	NA



AK, 25 JAN 2024 to 21 MAR 2024

AK, 25 JAN 2024 to 21 MAR 2024