

APP CRS <b>244°</b>	Rwy ldg TDZE Apt Elev	<b>4000</b> <b>574</b> <b>574</b>
------------------------	-----------------------------	-----------------------------------------

# RNAV (GPS) RWY 22

VENETIE (VEE) (PAVE)

RNP APCH-GPS.

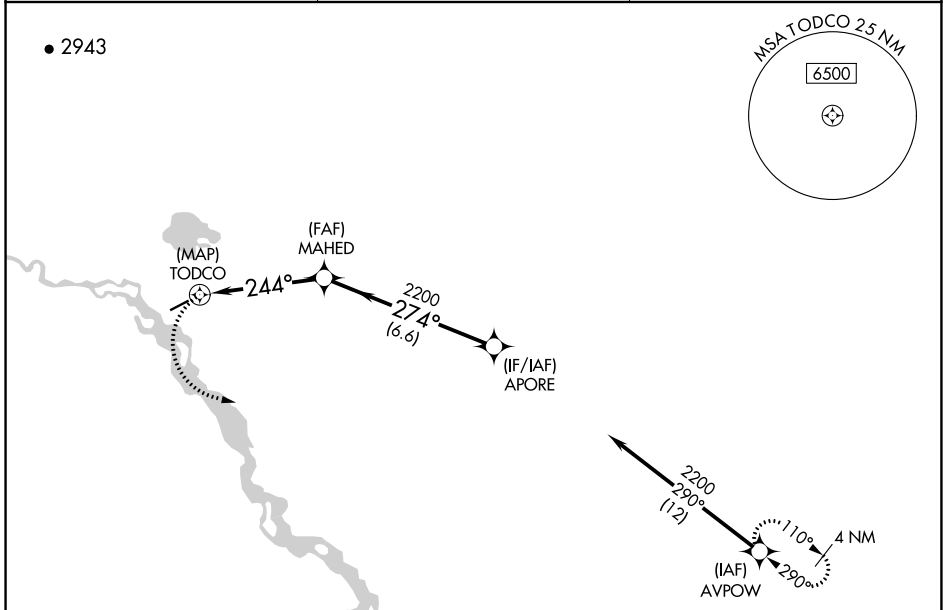
**NA** Rwy 22 helicopter visibility reduction below 1 SM NA. Use Fort Yukon altimeter setting. Procedure NA at night.

MISSED APPROACH: Climbing left turn to 2200, direct AVPOW and hold.

FYU/PFYU AWOS-3P  
**125.8**

ANCHORAGE CENTER  
**135.0 225.4**

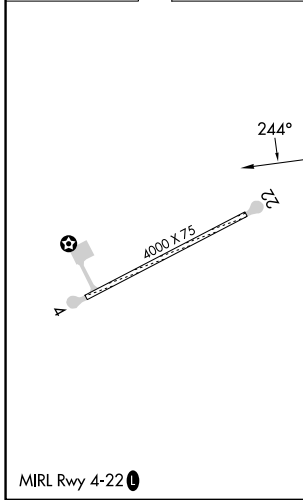
CTAF  
**122.9**



AK, 25 JAN 2024 to 21 MAR 2024

AK, 25 JAN 2024 to 21 MAR 2024

ELEV 574	TDZE 574
----------	----------



	2200	AVPOW	MAHED	2200	274°	2200	APORE
			TODCO	2200	244°	274°	2200
				≤ 3.00°	TCH 40		
	0.5	4.5 NM	6.6 NM				
CATEGORY	A	B	C	D			
LNAV MDA	1160-1	586 (600-1)	1160-1¾	586 (600-1¾)			
<b>CIRCLING</b>	1180-1	606 (700-1)	1180-1¾	1260-2¼	606 (700-1¾)	686 (700-2¼)	

APP CRS	Rwy Idg	<b>4000</b>
<b>029°</b>	TDZE	<b>572</b>
	Apt Elev	<b>574</b>

# RNAV (GPS) RWY 4

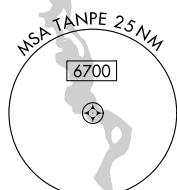
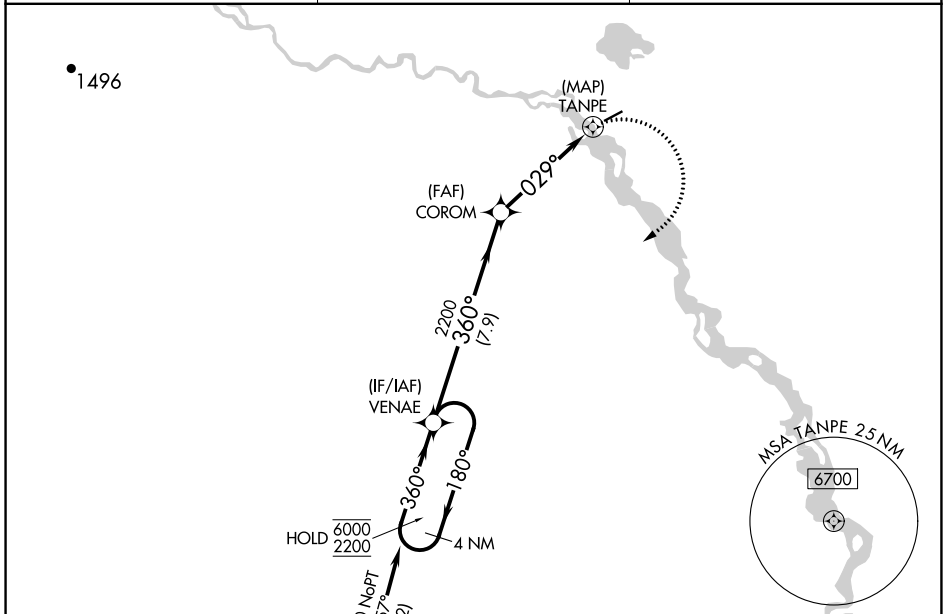
VENETIE (VEE) (PAVE)

RNP APCH-GPS.

**NA** Rwy 4 helicopter visibility reduction below 1 SM NA. Use Fort Yukon altimeter setting. Procedure NA at night.

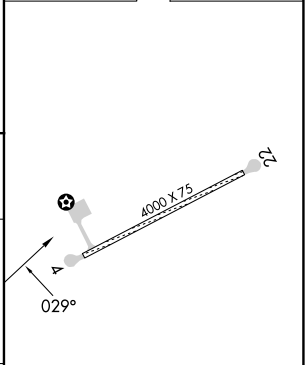
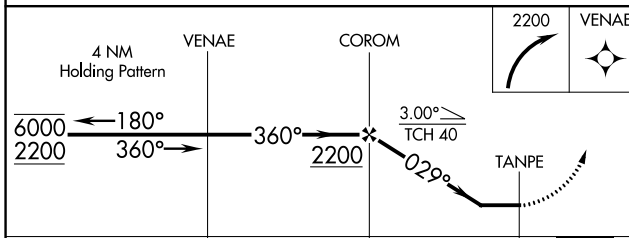
MISSED APPROACH: Climbing right turn to 2200, direct VENAE and hold.

FYU/PFYU AWOS-3P <b>125.8</b>	ANCHORAGE CENTER <b>135.0 225.4</b>	CTAF <b>122.9</b>
----------------------------------	----------------------------------------	----------------------



Procedure NA for arrivals at CURUP on airways B4 westbound and T273 southbound.

ELEV 574	TDZE 572
----------	----------



CATEGORY	A	B	C	D
LNVA MDA	1220-1	648 (700-1)	1220-1 $\frac{7}{8}$	648 (700-1 $\frac{7}{8}$ )
<b>C</b> CIRCLING	1220-1	646 (700-1)	1220-1 $\frac{7}{8}$ 646 (700-1 $\frac{7}{8}$ )	1260-2 $\frac{1}{4}$ 686 (700-2 $\frac{1}{4}$ )

MIRL Rwy 4-22

AK, 25 JAN 2024 to 21 MAR 2024

AK, 25 JAN 2024 to 21 MAR 2024