

WAAS CH 72841 W21A	APP CRS 200°	Rwy Idg TDZE Apt Elev	4400 18 18
--	------------------------	-----------------------------	---------------------------------------

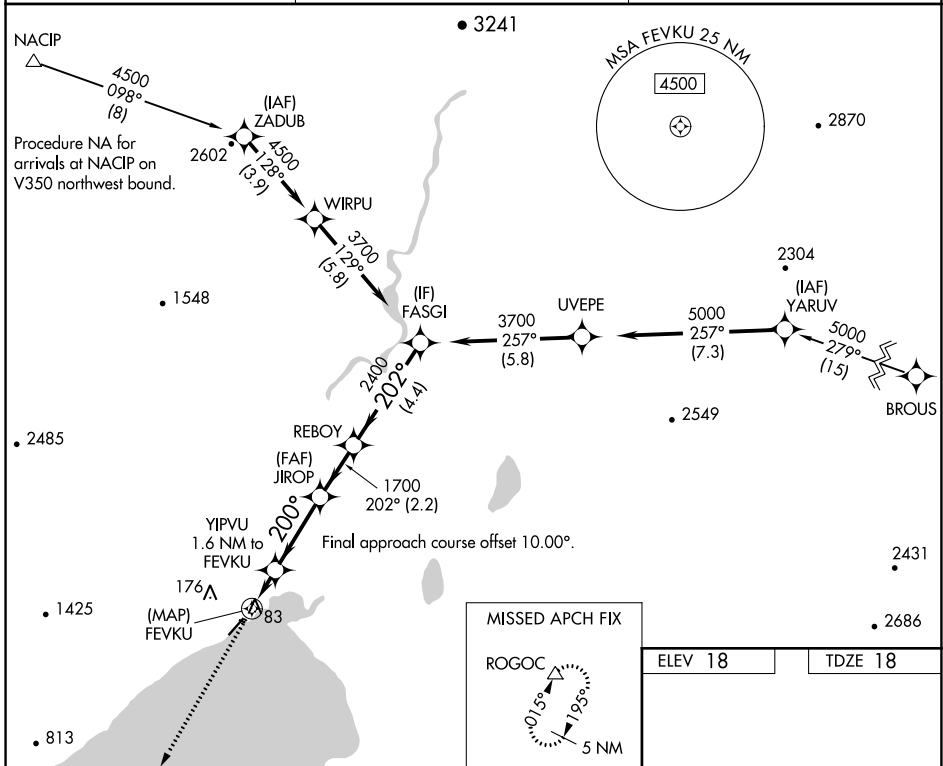
RNAV (GPS) RWY 21

TOGIAK (TOG)(PATG)

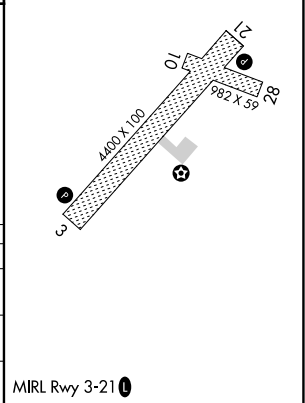
⚠ Circling NA northwest of Rwy 3-21.
⚠ Rwy 21 helicopter visibility reduction below 1 SM NA.
 DME/DME RNP-0.3 NA. Procedure NA at night.

MISSED APPROACH: Climb to 4400
 direct ROGOC and hold, continue climb-in-hold to 4400.

AWOS-3P 119.3	ANCHORAGE CENTER 132.75 282.35	CTAF 122.5 0
-------------------------	--	------------------------



4400 ↑ ROGOC	VGSI and descent angles not coincident (VGSI Angle 3.00/TCH 31).			
	FEVKU	YIPVU 1.6 NM to FEVKU	JIROP	REBOY
	720	1700	2400	3700
	3.00° TCH 40	200°	202°	202°
	0.5	1.6 NM	3.1 NM	2.2 NM
CATEGORY	A	B	C	D
LP MDA		340-1	322 (400-1)	
LNAV MDA		340-1	322 (400-1)	
C CIRCLING	400-1 382 (400-1)	480-1 462 (500-1)	480-1½ 462 (500-1½)	800-2½ 782 (800-2½)



AK, 02 DEC 2021 to 27 JAN 2022

AK, 02 DEC 2021 to 27 JAN 2022

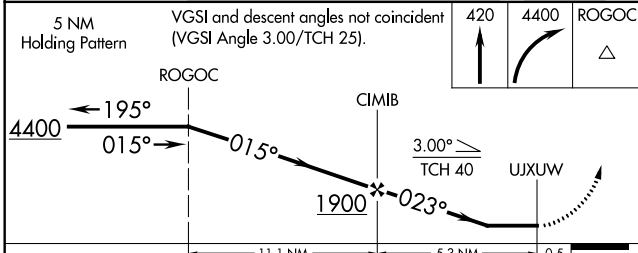
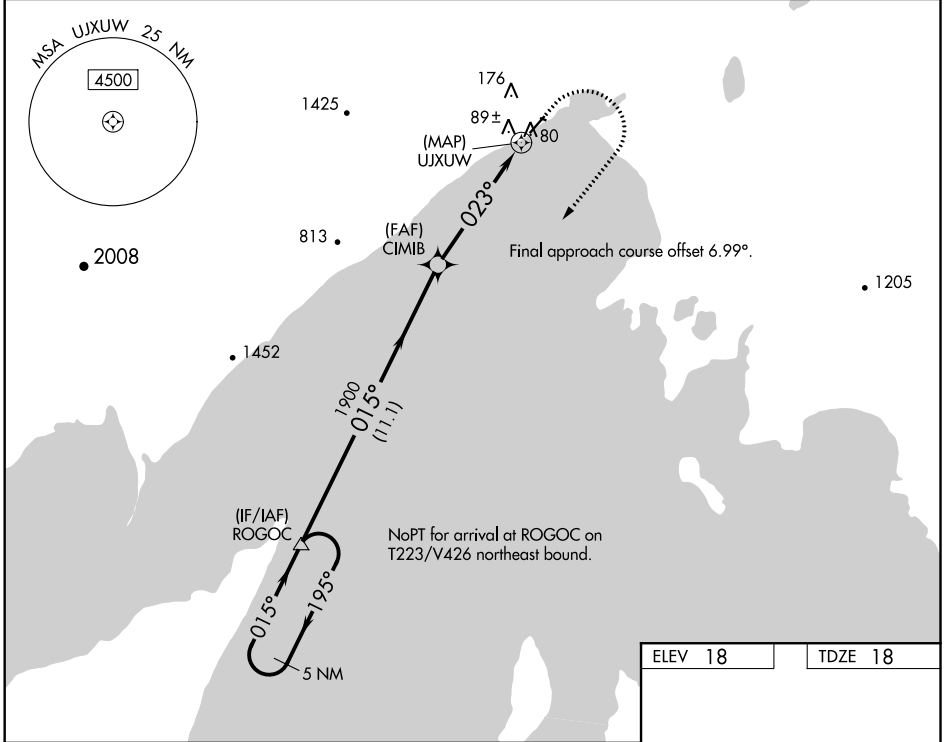
WAAS CH 69441 W03A	APP CRS 023°	Rwy Idg TDZE Apt Elev	4400 18 18
--	------------------------	-----------------------------	---------------------------------------

RNAV (GPS) RWY 3

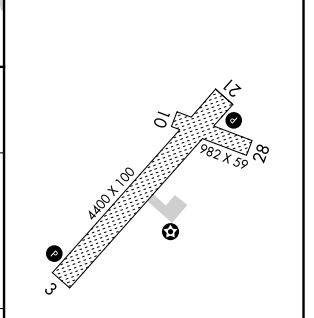
TOGIAK (TOG)(PATG)

<p>⚠ Circling NA northwest of Rwy 3-21. Rwy 3 helicopter visibility reduction below 1 SM NA. DME/DME RNP-0.3 NA. Procedure NA at night.</p>	<p>MISSED APPROACH: Climb to 420 then climbing right turn to 4400 direct ROGOC and hold, continue climb-in-hold to 4400.</p>
--	--

AWOS-3P 119,3	ANCHORAGE CENTER 132.75 282.35	CTAF 122.5 0
-------------------------	--	------------------------



ELEV 18	TDZE 18
---------	---------



CATEGORY	A	B	C	D
LP MDA	380-1 362 (400-1)			
LNVA MDA	400-1	382 (400-1)	400-1½	382 (400-1½)
C CIRCLING	400-1 382 (400-1)	480-1 462 (500-1)	480-1½ 462 (500-1½)	800-2½ 782 (800-2½)

MIRL Rwy 3-21 0

AK, 02 DEC 2021 to 27 JAN 2022

AK, 02 DEC 2021 to 27 JAN 2022