

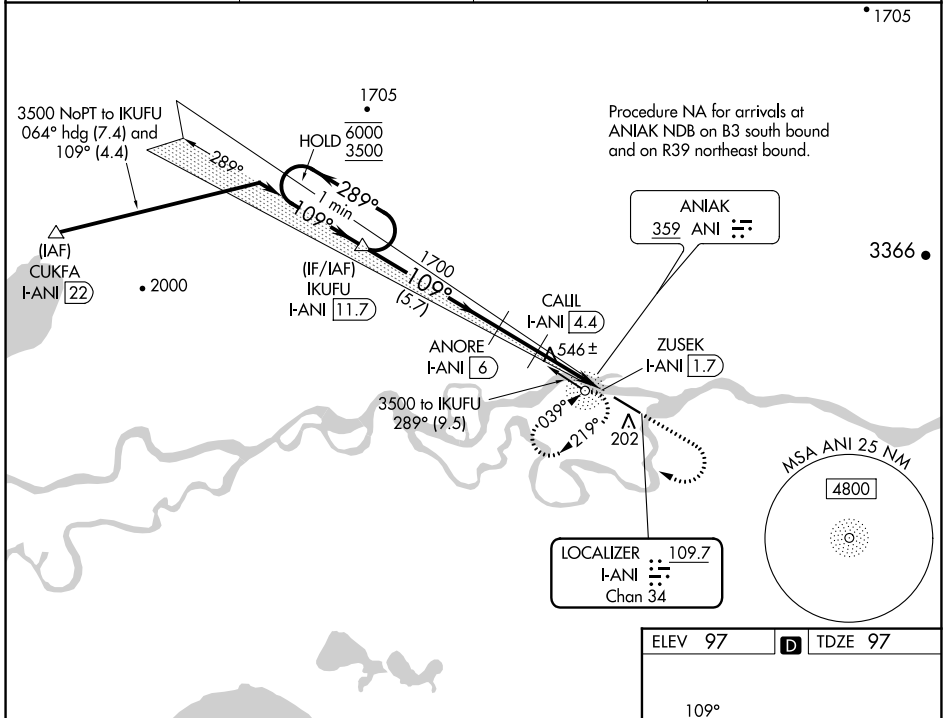
LOC/DME F-ANI 109.7 Chan 34	APP CRS 109°	Rwy Idg 5400 TDZE 97 Apt Elev 97
---	------------------------	---

ILS or LOC RWY 11

ANIAK (ANI)(PANI)

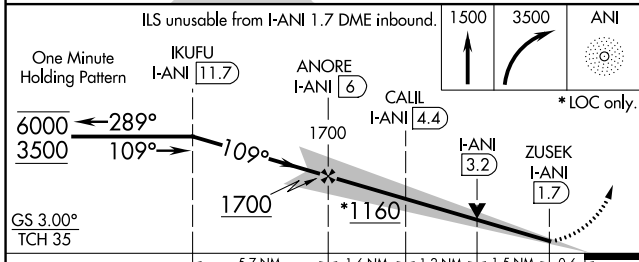
DME required.	MALSF	MISSED APPROACH: Climb to 1500 then climbing right turn to 3500 direct ANI NDB and hold, continue climb-in-hold to 3500. (ADF required)
<p>⚠ Circling NA north of Rwy 11-29. Rwy 11 helicopter visibility reduction below 3/4 SM NA. Inop table does not apply to S-ILS all Cats.</p> <p>❄ -38°C</p>		

AWOS-3P 124.3	ANCHORAGE CENTER 118.15 251.05	CLNC DEL 118.15	CTAF 122.10
-------------------------	--	---------------------------	-----------------------

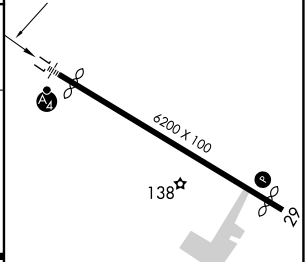


AK, 25 JAN 2024 to 21 MAR 2024

AK, 25 JAN 2024 to 21 MAR 2024



ELEV 97	TDZE 97
---------	---------



CATEGORY	A	B	C	D
S-ILS 11	347-3/4 250 (300-3/4)			
S-LOC 11	800-3/4 703 (800-3/4)		800-1 3/4 703 (800-1 3/4)	
C CIRCLING	800-1 703 (800-1)		860-2 1/4 763 (800-2 1/4)	1200-3 1103 (1200-3)

HIRL Rwy 11-29

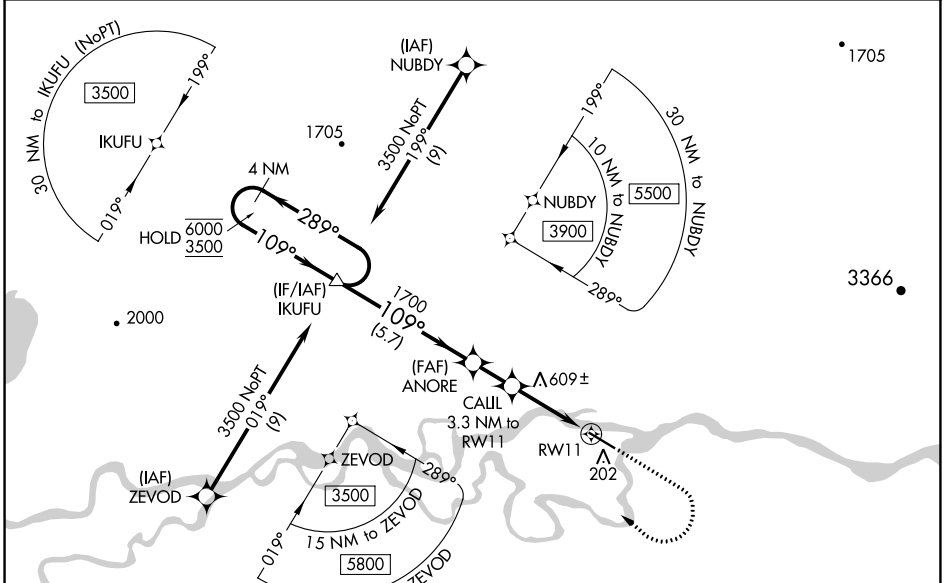
WAAS CH 45838 W11A	APP CRS 109°	Rwy ldg 5400 TDZE 97 Apt Elev 97
---------------------------------	------------------------	---

RNAV (GPS) RWY 11

ANIAK (ANI)(PANI)

RNP APCH.	<p>⚠ Circling NA north of Rwy 11-29. Rwy 11 helicopter visibility reduction below 3/4 SM NA. Inop table does not apply to LPV, LNAV/VNAV all Cats, LNAV Cat A. For uncompensated Baro-VNAV systems, LNAV/VNAV NA below -21°C or above 54°C. For inop ALS, increase LNAV Cat C/D visibility to 2 1/2 SM.</p> <p>❄ -38°C</p>	<p>MALSF</p> <p>MISSED APPROACH: Climb to 1500 then climbing right turn to 3500 direct IKUFU and hold, continue climb-in-hold to 3500.</p>
-----------	--	--

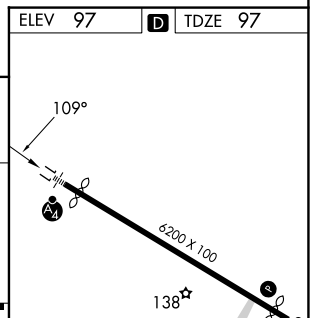
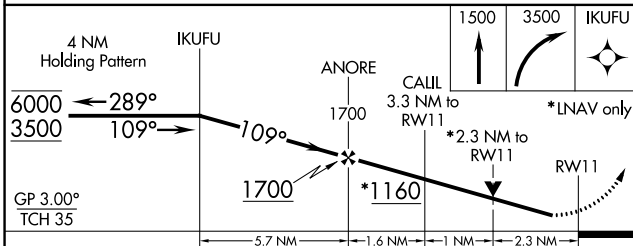
AWOS-3P 124.3	ANCHORAGE CENTER 118.15 251.05	CLNC DEL 118.15	CTAF 122.1
-------------------------	--	---------------------------	----------------------



AK, 25 JAN 2024 to 21 MAR 2024

AK, 25 JAN 2024 to 21 MAR 2024

ELEV 97	TDZE 97
---------	---------



CATEGORY	A	B	C	D
LPV DA		347-1	250 (300-1)	
LNAV/VNAV DA		994-4	897 (900-4)	
LNAV MDA	860-1	763 (800-1)	860-2	763 (800-2)
CIRCLING	860-1 763 (800-1)	860-1 1/4 763 (800-1 1/4)	860-2 1/2 763 (800-2 1/2)	1200-3 1103 (1200-3)

HIRL Rwy 11-29

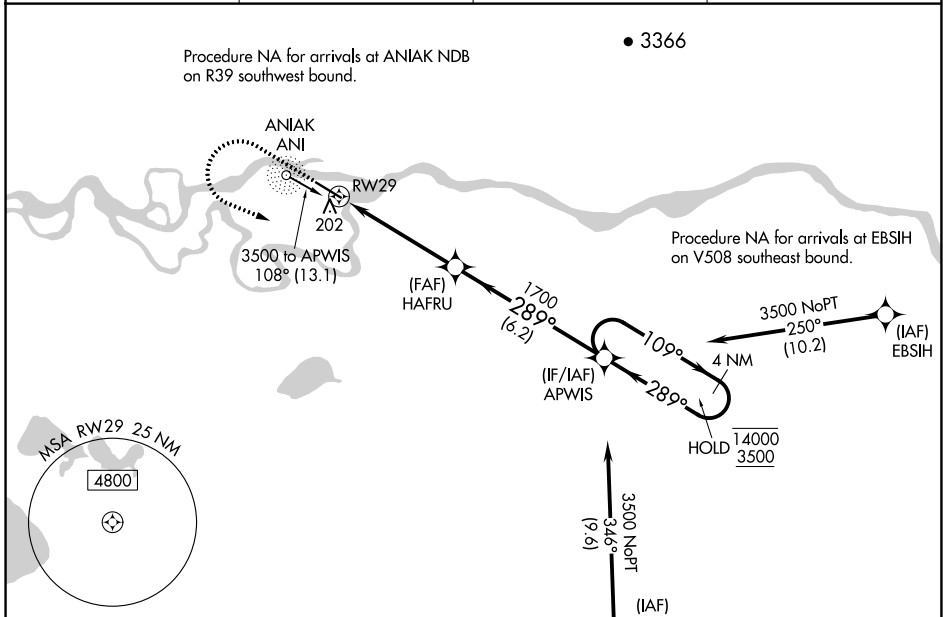
WAAS CH 86538 W29A	APP CRS 289°	Rwy Idg TDZE Apt Elev	5400 97 97
--	------------------------	-----------------------------	---------------------------------------

RNAV (GPS) RWY 29

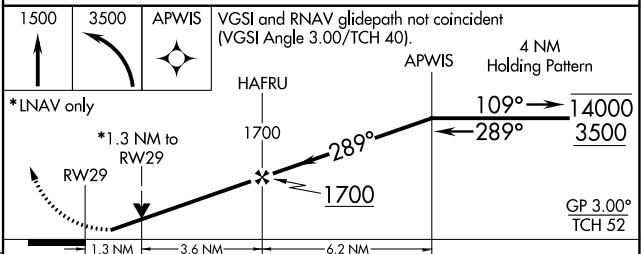
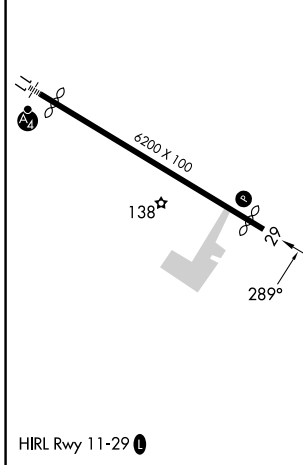
ANIAK (ANI)(PANI)

RNP APCH.	<p>⚠ Circling NA north of Rwy 11-29. Rwy 29 helicopter visibility reduction below 3/4 SM NA. For uncompensated Baro-VNAV systems, LNAV/VNAV NA below -18°C or above 54°C.</p> <p>❄ -38°C</p>	<p>MISSED APPROACH: Climb to 1500 then climbing left turn to 3500 direct APWIS and hold.</p>
-----------	--	--

AWOS-3P 124.3	ANCHORAGE CENTER 118.15 251.05	CLNC DEL 118.15	CTAF 122.1
-------------------------	--	---------------------------	----------------------



ELEV 97	D	TDZE 97
---------	----------	---------



CATEGORY	A	B	C	D
LPV DA	347-1		250 (300-1)	
LNAV/VNAV DA	460-1		363 (400-1)	
LNAV MDA	560-1	463 (500-1)	560-1 3/8	463 (500-1 3/8)
C CIRCLING	560-1 463 (500-1)	620-1 523 (600-1)	860-2 1/4 763 (800-2 1/4)	1200-3 1103 (1200-3)

AK, 25 JAN 2024 to 21 MAR 2024

AK, 25 JAN 2024 to 21 MAR 2024