

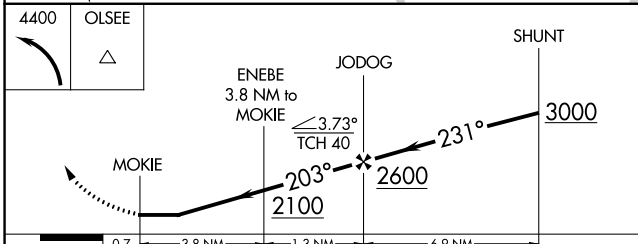
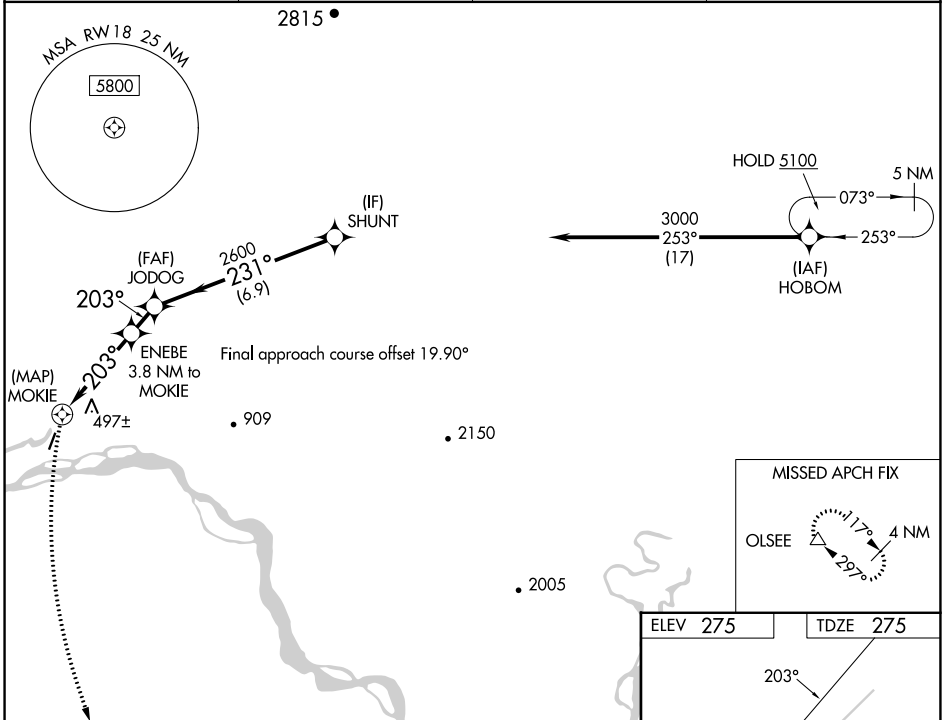
WAAS CH 69541 W18A	APP CRS 203°	Rwy Idg TDZE Apt Elev	3400 275 275
--	------------------------	-----------------------------	---

RNAV (GPS) RWY 18

MANLEY HOT SPRINGS (MLY)(P.A.M.L)

RNP APCH.	<p>When Tanana altimeter setting not received, procedure NA.</p> <p>⚠ NA Circling NA west of Rwy 18-36. Rwy 18 helicopter visibility reduction below 1 SM NA. Procedure NA at night.</p> <p>❄ -22°C</p>	<p>MISSED APPROACH: Climbing left turn to 4400 direct OLSEE and hold.</p>
-----------	---	---

TAL/PATA ASOS 135.1	ANCHORAGE CENTER 120.9 319.2	FAIRBANKS RADIO 122.3 122.65	UNICOM 122.8(CTAF) 0
-------------------------------	--	--	--------------------------------



ELEV 275	TDZE 275
MIRL Rwy 18-36 0	

CATEGORY	A	B	C	D
LP MDA	1860-1¼ 1585 (1600-1¼)	1860-1½ 1585 (1600-1½)	1860-3 1585 (1600-3)	NA
LNAV MDA	1960-1¼ 1685 (1700-1¼)	1960-1½ 1685 (1700-1½)	1960-3 1685 (1700-3)	NA
Ⓢ CIRCLING	1960-1¼ 1685 (1700-1¼)	1960-1½ 1685 (1700-1½)	1960-3 1685 (1700-3)	NA

AK, 25 JAN 2024 to 21 MAR 2024

AK, 25 JAN 2024 to 21 MAR 2024

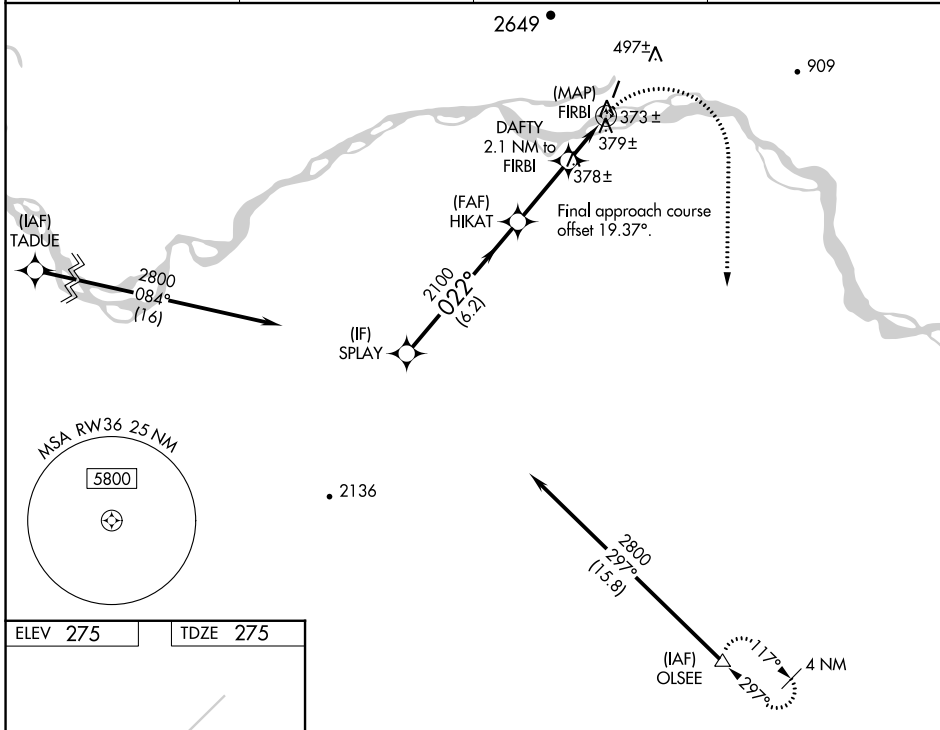
WAAS CH 63141 W36A	APP CRS 022°	Rwy Idg TDZE Apt Elev	3400 275 275
--	------------------------	-----------------------------	---

RNAV (GPS) RWY 36

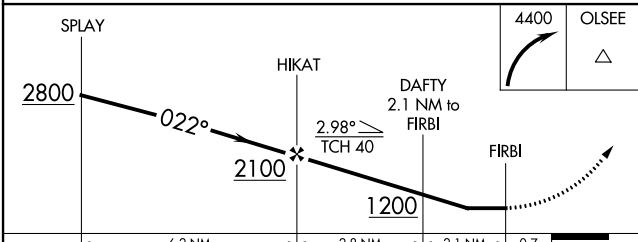
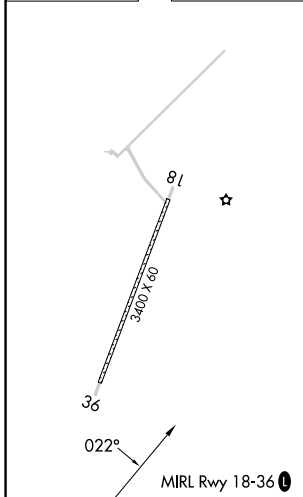
MANLEY HOT SPRINGS (MLY)(P.A.M.L)

RNP APCH.	When Tanana altimeter setting not received, procedure NA. Circling NA west of Rwy 18-36. Rwy 36 helicopter visibility reduction below 3/4 SM NA. Procedure NA at night.	MISSED APPROACH: Climbing right turn to 4400 direct OLSEE and hold.
-----------	--	---

TAL/PATA ASOS 135.1	ANCHORAGE CENTER 120.9 319.2	FAIRBANKS RADIO 122.3 122.65	UNICOM 122.8(CTAF) 0
-------------------------------	--	--	--------------------------------



ELEV 275	TDZE 275
----------	----------



CATEGORY	A	B	C	D
LP MDA	720-1	445 (500-1)	720-1 3/8 445 (500-1 3/8)	NA
LNAV MDA	1020-1 745 (800-1)	1020-1 1/4 745 (800-1 1/4)	1020-2 745 (800-2)	NA
CIRCLING	1140-1 1/4 865 (900-1 1/4)	1280-1 1/4 1005 (1100-1 1/4)	1580-3 1305 (1400-3)	NA