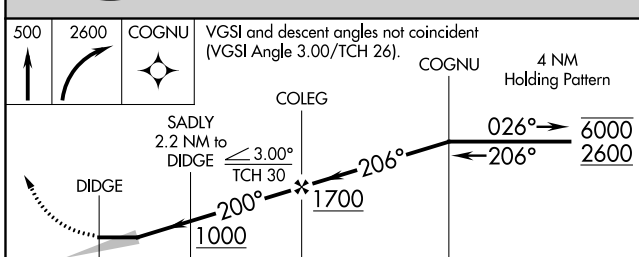
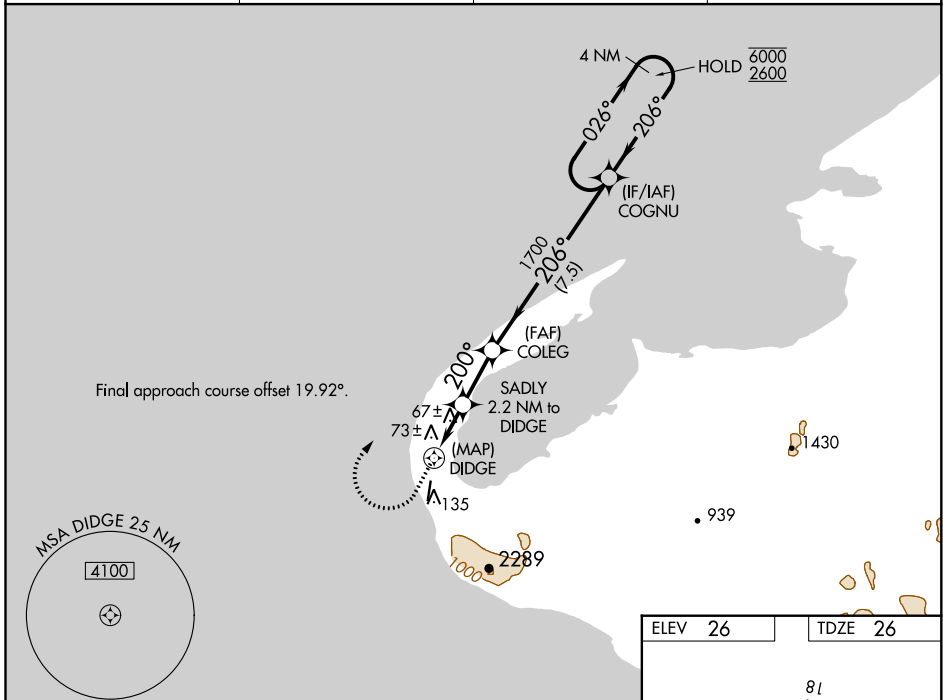


WAAS CH <b>57942</b> <b>W18A</b>	APP CRS <b>200°</b>	Rwy Idg TDZE Apt Elev	<b>3990</b> <b>26</b> <b>26</b>
--	------------------------	-----------------------------	---------------------------------------

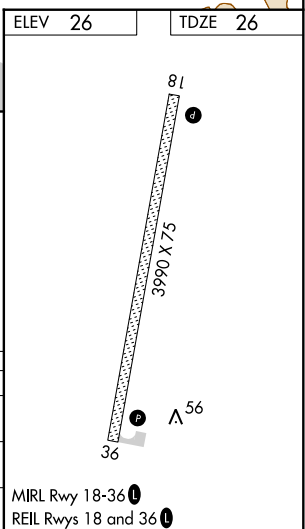
# RNAV (GPS) RWY 18

WALES (IWK) (PAIW)

RNP APCH. -27°C Circling NA east of Rwy 18-36.		MISSED APPROACH: Climb to 500 then climbing right turn to 2600 direct COGNO and hold.	
AWOS-3P <b>118.525</b>	ANCHORAGE CENTER <b>133.3 290.4</b>	NOME RADIO <b>122.6</b>	CTAF <b>123.0</b>



500	2600	COGNO	VGSI and descent angles not coincident (VGSI Angle 3.00/TCH 26).	
DIDGE		COLEG	COGNO	4 NM Holding Pattern
0.8	2.2 NM	2.2 NM	7.5 NM	
CATEGORY	A	B	C	D
LP MDA	340-1 314 (400-1)			
LNAV MDA	640-1	614 (700-1)	640-1¾	614 (700-1¾)
CIRCLING	640-1	614 (700-1)	640-1¾	640-2
			614 (700-1¾)	614 (700-2)



AK, 17 JUN 2021 to 12 AUG 2021

AK, 17 JUN 2021 to 12 AUG 2021

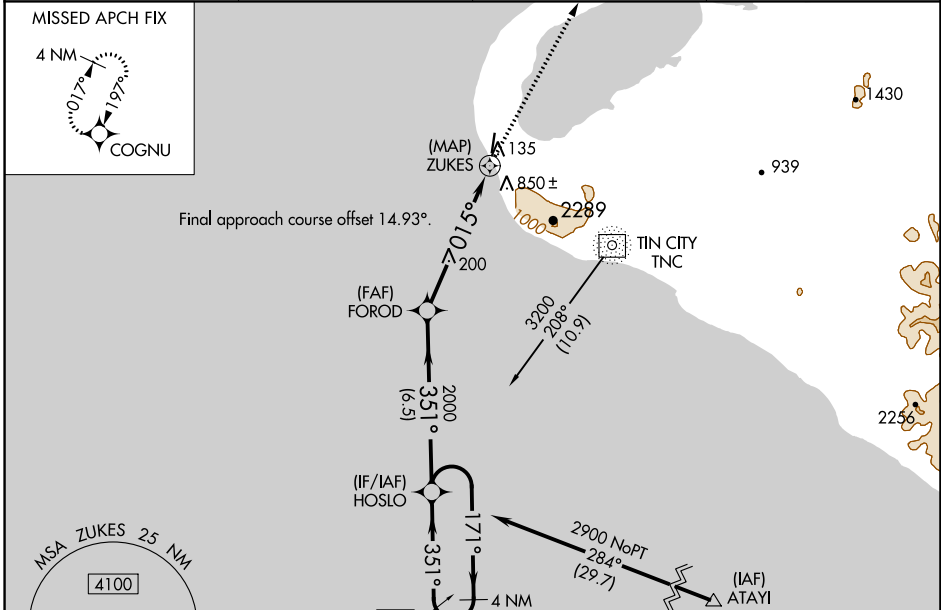
WAAS CH <b>60943</b> <b>W36A</b>	APP CRS <b>015°</b>	Rwy Idg <b>3990</b> TDZE <b>26</b> Apt Elev <b>26</b>
--	------------------------	---

# RNAV (GPS) RWY 36

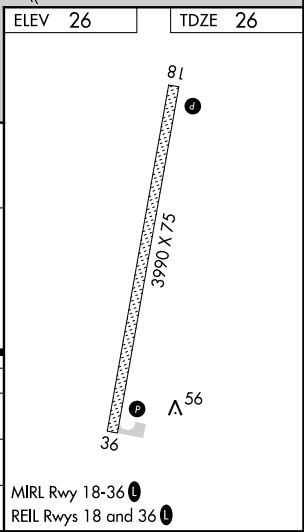
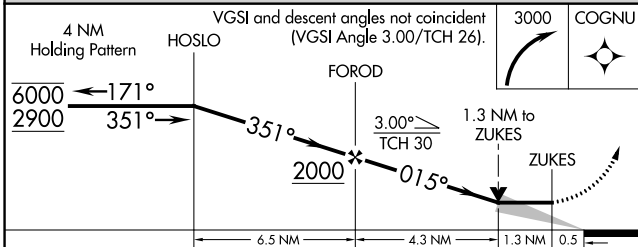
WALES (IWK) (PAIW)

RNP APCH.		MISSED APPROACH: Climbing right turn to 3000 direct COGNU and hold.
<p>Circling NA east of Rwy 18-36. -27°C</p>		

AWOS-3P <b>118.525</b>	ANCHORAGE CENTER <b>133.3 290.4</b>	NOME RADIO <b>122.6</b>	CTAF <b>123.0</b>
---------------------------	--	----------------------------	----------------------



ELEV 26	TDZE 26
---------	---------



CATEGORY	A	B	C	D
LP MDA	460-1	434 (500-1)	460-1¼	434 (500-1¼)
LNAV MDA	920-1¼	894 (900-1¼)	920-2½	894 (900-2½)
CIRCLING	920-1¼	894 (900-1¼)	920-2¾ 894 (900-2¾)	920-3 894 (900-3)

AK, 17 JUN 2021 to 12 AUG 2021

AK, 17 JUN 2021 to 12 AUG 2021