

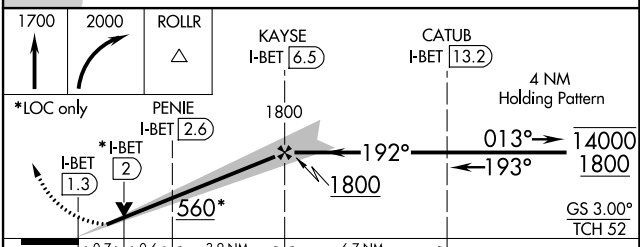
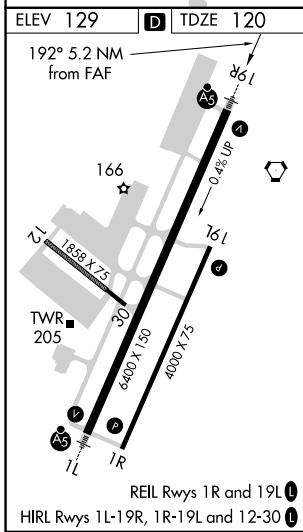
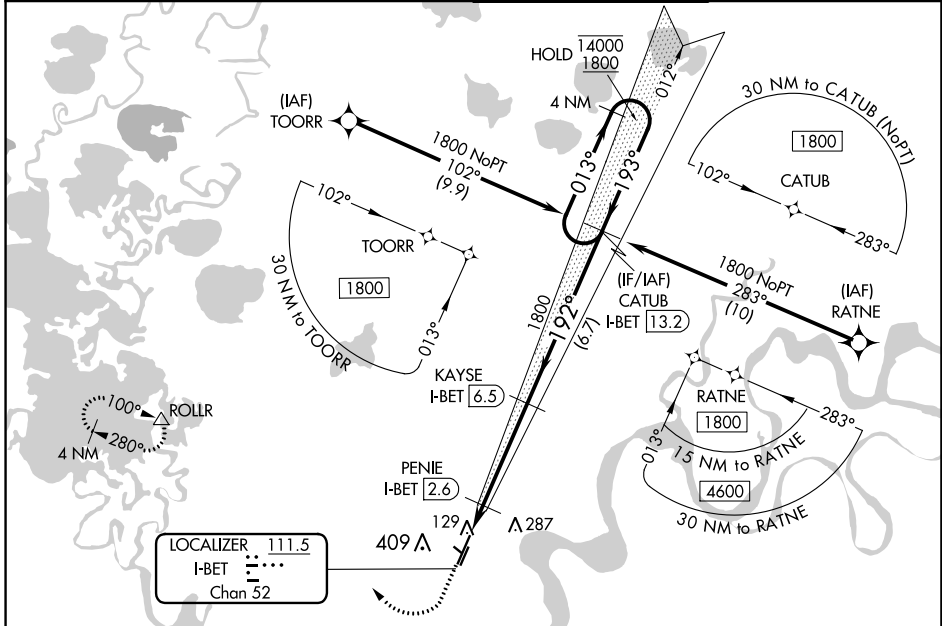
LOC/DME I-BET	APP CRS	Rwy Idg	6400
111.5	192°	TDZE	120
Chan 52		Apt Elev	129

# ILS Y or LOC Y RWY 19R

BETHEL (BET)(PABE)

DME required. RNAV 1-GPS required.		MALSR	MISSED APPROACH: Climb to 1700 then climbing right turn to 2000 direct ROLLR and hold.
⚠ Circling NA west of Rwy 1L-19R. For inop ALS, increase S-LOC-19R Cat C/D visibility to RVR 4000. #RVR 1800 authorized with use of FD or AP or HUD to DA.			

ATIS <b>119.8</b>	ANCHORAGE CENTER <b>125.2 372.0</b>	BETHEL TOWER * <b>118.7 (CTAF) 0</b>	GND CON <b>121.7</b>
----------------------	--	---	-------------------------



CATEGORY	A	B	C	D
S-ILS 19R#	320/24 200 (200-½)			
S-LOC 19R	380/24 260 (300-½)			
CIRCLING	500-1 371 (400-1)	600-1 471 (500-1)	600-1½ 471 (500-1½)	680-2 551 (600-2)

AK, 25 JAN 2024 to 21 MAR 2024

AK, 25 JAN 2024 to 21 MAR 2024

LOC/DME I-BET	APP CRS	Rwy Idg	6400
<b>111.5</b>	<b>192°</b>	TDZE	120
Chan <b>52</b>		Apt Elev	129

# ILS Z or LOC Z RWY 19R

BETHEL (BET)(PABE)

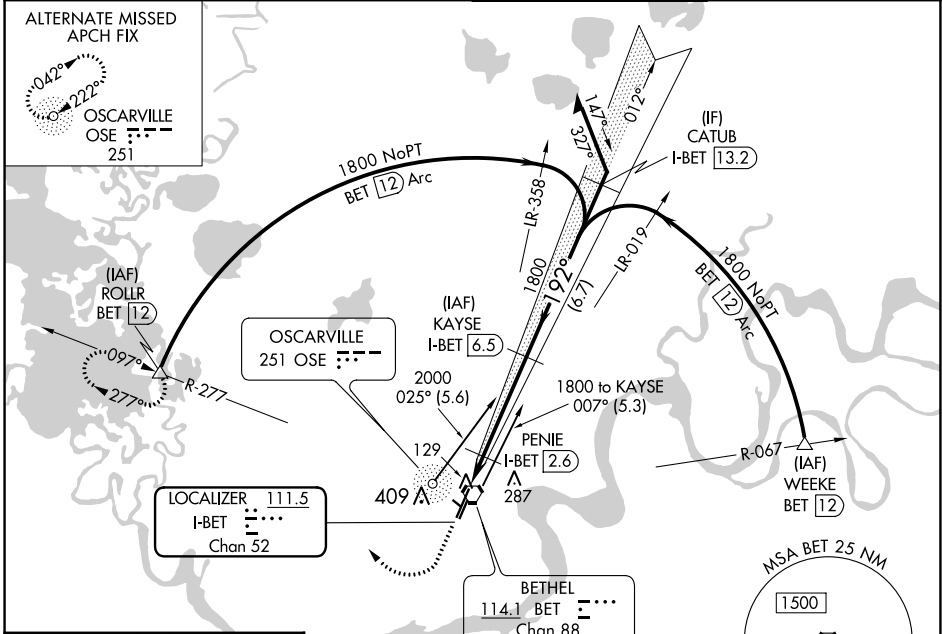
DME required.

**V** Circling NA west of Rwy 1L-19R.  
**A** For inop ALS, increase S-LOC Cat C/D visibility to RVR 4500.  
 #RVR 1800 authorized with the use of FD or AP or HUD to DA.



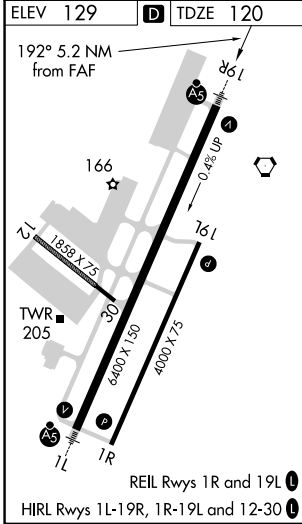
**MISSED APPROACH:** Climb to 700 then climbing right turn to 2000 on BET VORTAC R-277 to ROLLR/BET VORTAC 12 DME and hold.

ATIS <b>119.8</b>	ANCHORAGE CENTER <b>125.2 372.0</b>	BETHEL TOWER * <b>118.7</b> (CTAF) <b>0</b>	GND CON <b>121.7</b>
----------------------	--	--	-------------------------



AK, 25 JAN 2024 to 21 MAR 2024

AK, 25 JAN 2024 to 21 MAR 2024



700 ↑	2000 BET R-277	ROLLR △	KAYSE I-BET 6.5	Remain within 10 NM
	I-BET 1.3	*I-BET 2.1	560*	GS 3.00° TCH 52
0.8	0.5	3.9 NM		
CATEGORY	A	B	C	D
S-ILS 19R#	320/24 200 (200-½)			
S-LOC 19R	400/24 280 (300-½)			
CIRCLING	500-1 371 (400-1)	600-1 471 (500-1)	600-1½ 471 (500-1½)	680-2 551 (600-2)

WAAS CH <b>99440</b> W <b>19B</b>	APP CRS <b>193°</b>	Rwy Idg TDZE <b>4000</b> <b>124</b> Apt Elev <b>129</b>
---	------------------------	--

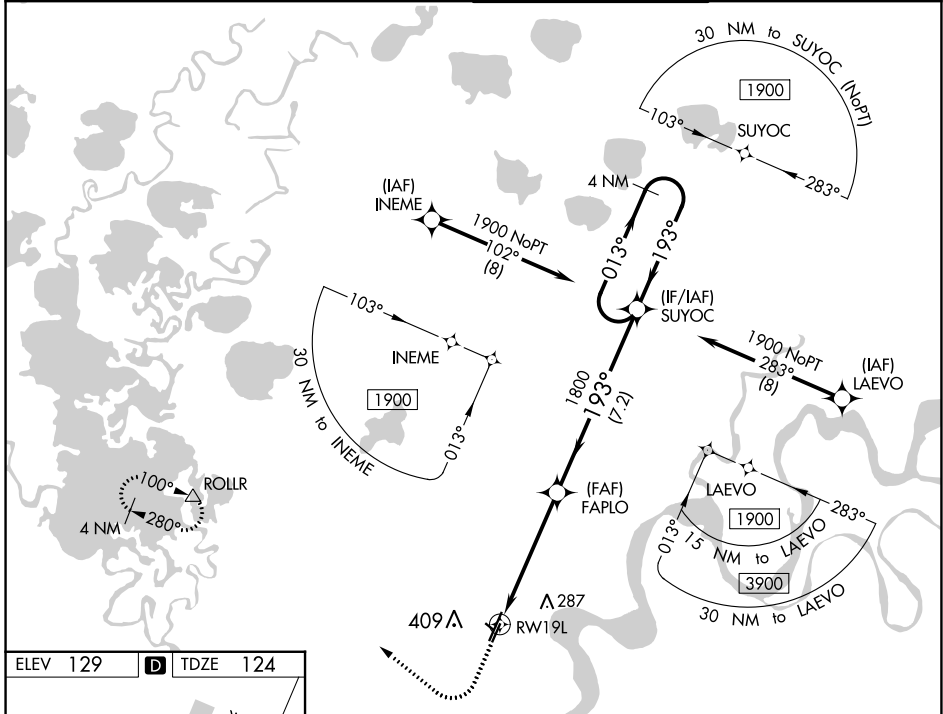
# RNAV (GPS) RWY 19L

BETHEL (BET)(PABE)

**⚠** For uncompensated Baro-VNAV systems, LNAV/VNAV NA below -19°C (-2°F) or above 54°C (130°F). Circling NA west of Rwy 1L-19R. DME/DME RNP-0.3 NA.

MISSED APPROACH: Climb to 600 then climbing right turn to 2000 direct ROLLR and hold.

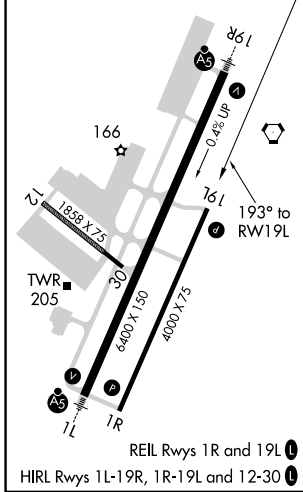
ATIS <b>119.8</b>	ANCHORAGE CENTER <b>125.2 372.0</b>	BETHEL TOWER ★ <b>118.7 (CTAF) 0</b>	GND CON <b>121.7</b>
----------------------	--	---	-------------------------



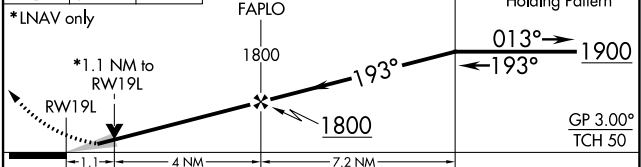
AK, 25 JAN 2024 to 21 MAR 2024

AK, 25 JAN 2024 to 21 MAR 2024

ELEV <b>129</b>	<b>D</b>	TDZE <b>124</b>
-----------------	----------	-----------------



600 2000 ROLLR VGS1 and RNAV glidepath not coincident (VGS1 Angle 3.00/TCH 32).



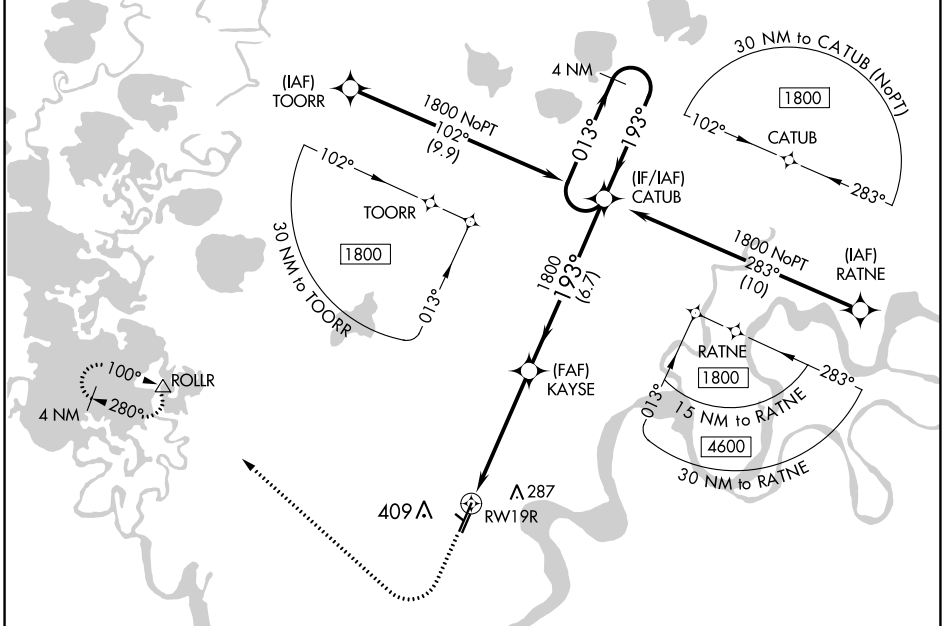
CATEGORY	A	B	C	D
LPV DA		374-3/4	250 (300-3/4)	
LNAV/VNAV DA		374-3/4	250 (300-3/4)	
LNAV MDA		500-1	376 (400-1)	
<b>CIRCLING</b>	500-1 371 (400-1)	600-1 471 (500-1)	600-1 1/2 471 (500-1 1/2)	680-2 551 (600-2)

WAAS CH <b>70507</b> W19A	APP CRS <b>193°</b>	Rwy Idg TDZE <b>120</b> Apt Elev <b>129</b>	<b>6400</b>
---------------------------------	------------------------	---	-------------

# RNAV (GPS) RWY 19R

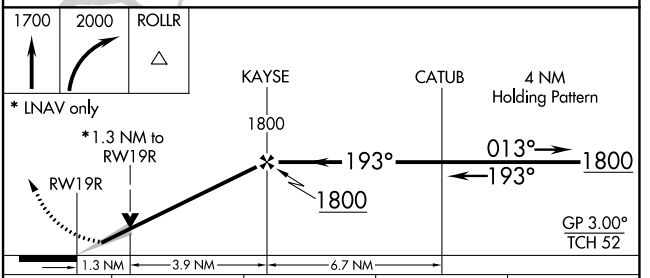
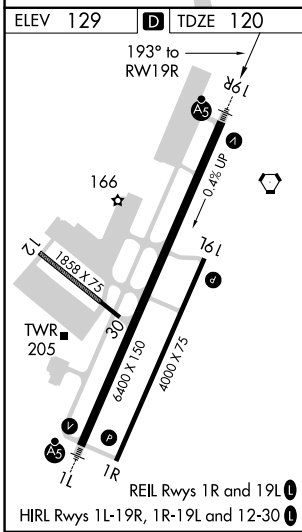
BETHEL (BET)(PABE)

<p>▼ For uncompensated Baro-VNAV systems, LNAV/VNAV NA below -25°C (-13°F) or above 54°C (130°F). Circling NA west of Rwy 1L-19R. DME/DME RNP-0.3 NA.</p>	MALSR	MISSED APPROACH: Climb to 1700 then climbing right turn to 2000 direct ROLLR and hold.
	<p>ATIS <b>119.8</b></p>	<p>ANCHORAGE CENTER <b>125.2 372.0</b></p>
<p>GND CON <b>121.7</b></p>		



AK, 25 JAN 2024 to 21 MAR 2024

AK, 25 JAN 2024 to 21 MAR 2024



CATEGORY	A	B	C	D
LPV DA		320/24	200 (200-½)	
LNAV/VNAV DA		479/40	359 (400-¾)	
LNAV MDA	560/24	440 (500-½)	560/45	440 (500-¾)
CIRCLING	560-1 431 (500-1)	600-1 471 (500-1)	600-1½ 471 (500-1½)	680-2 551 (600-2)


WAAS CH <b>42707</b> W01A	APP CRS <b>012°</b>	Rwy Idg <b>6400</b> TDZE <b>127</b> Apt Elev <b>129</b>
---------------------------------	------------------------	---

# RNAV (GPS) RWY 1L

BETHEL (BET)(PABE)

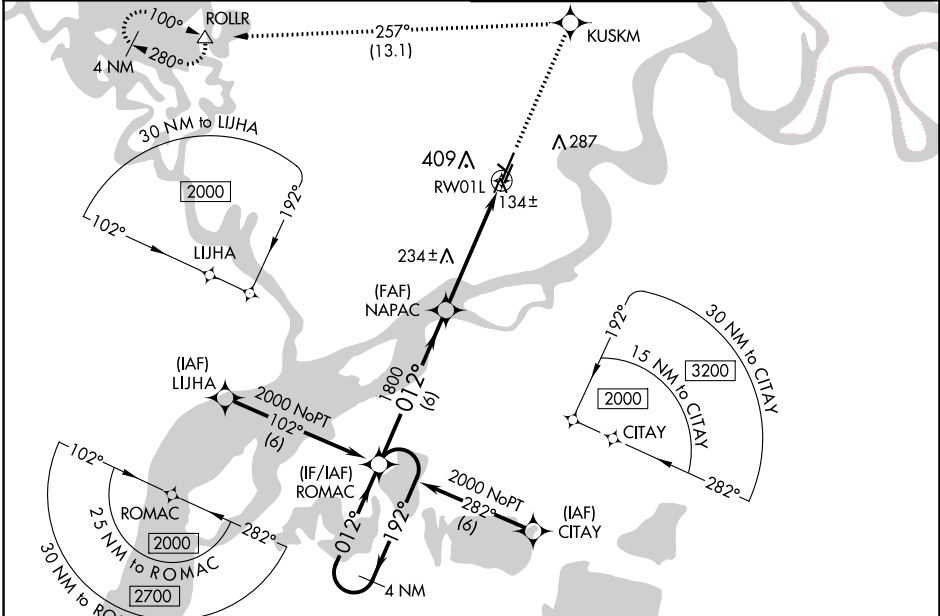
**▽** For uncompensated Baro-VNAV systems, LNAV/VNAV NA below -25°C (-13°F) or above 54°C (130°F).  
Circling NA west of Rwy 1L-19R. DME/DME RNP-0.3 NA.  
For inop ALS, increase LNAV Cat C/D visibility to RVR 6000.

MALSR



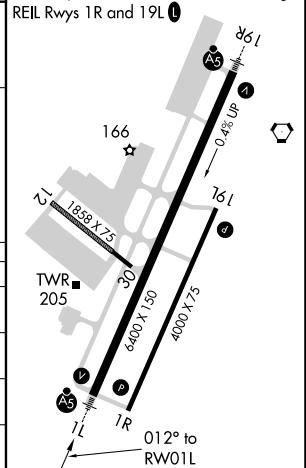
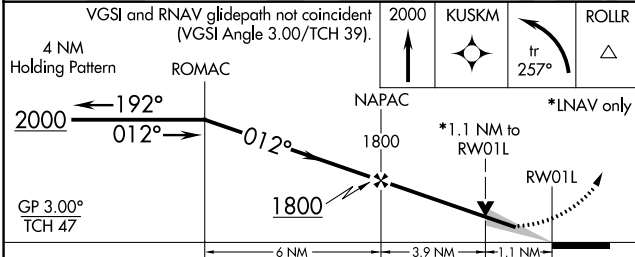
MISSED APPROACH: Climb to 2000 direct KUSKM and left turn on track 257° to ROLLR and hold.

ATIS <b>119.8</b>	ANCHORAGE CENTER <b>125.2 372.0</b>	BETHEL TOWER ★ <b>118.7 (CTAF) 0</b>	GND CON <b>121.7</b>
----------------------	--	---	-------------------------



ELEV 129	TDZE 127
----------	----------

HIRL Rws 1L-19R, 1R-19L and 12-30  
REIL Rws 1R and 19L



CATEGORY	A	B	C	D
LPV DA		377/24	250 (300-½)	
LNAV/VNAV DA		555/50	428 (500-1)	
LNAV MDA	500/24	373 (400-½)	500/50	373 (400-1)
<b>C</b> CIRCLING	500-1 371 (400-1)	600-1 471 (500-1)	600-1½ 471 (500-1½)	680-2 551 (600-2)

AK, 25 JAN 2024 to 21 MAR 2024

AK, 25 JAN 2024 to 21 MAR 2024

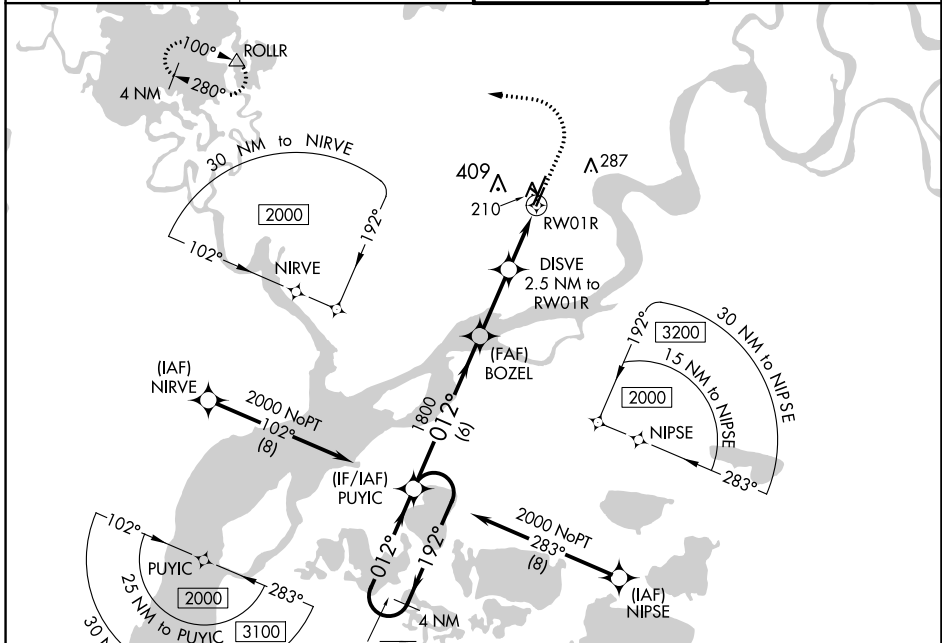
WAAS CH <b>81940</b> <b>W01B</b>	APP CRS <b>012°</b>	Rwy Idg <b>4000</b> TDZE <b>124</b> Apt Elev <b>129</b>
--	------------------------	---

# RNAV (GPS) RWY 1R

BETHEL (BET)(PABE)

RNP APCH.	MISSED APPROACH: Climb to 600 then climbing left turn to 2000 direct ROLLR and hold.
<p><b>▼</b> Circling NA west of Rwy 1L-19R. For uncompensated Baro-VNAV systems, LNAV/VNAV NA below -18°C or above 54°C.</p>	

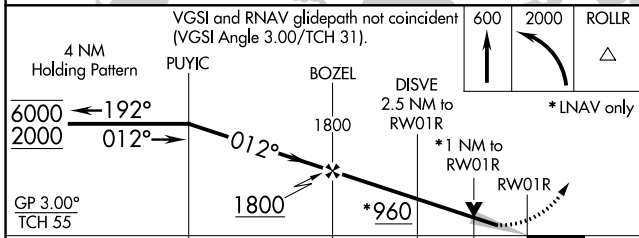
ATIS <b>119.8</b>	ANCHORAGE CENTER <b>125.2 372.0</b>	BETHEL TOWER * <b>118.7 (CTAF) 0</b>	GND CON <b>121.7</b>
----------------------	--	---	-------------------------



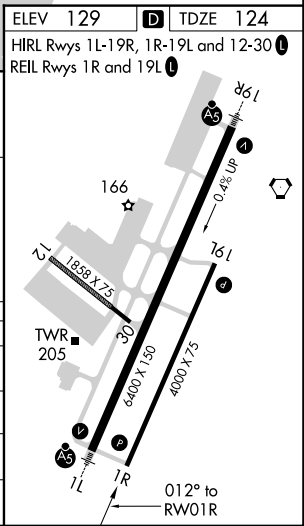
AK, 25 JAN 2024 to 21 MAR 2024

AK, 25 JAN 2024 to 21 MAR 2024

ELEV 129	TDZE 124
HIRL Rwys 1L-19R, 1R-19L and 12-30	
REIL Rwys 1R and 19L	



CATEGORY	A	B	C	D
LPV DA		374-3/4	250 (300-3/4)	
LNAV/VNAV DA		374-3/4	250 (300-3/4)	
LNAV MDA		460-1	336 (400-1)	
<b>C</b> CIRCLING	500-1 371 (400-1)	600-1 471 (500-1)	600-1 1/2 471 (500-1 1/2)	680-2 551 (600-2)



BETHEL, ALASKA

AL-5001 (FAA)

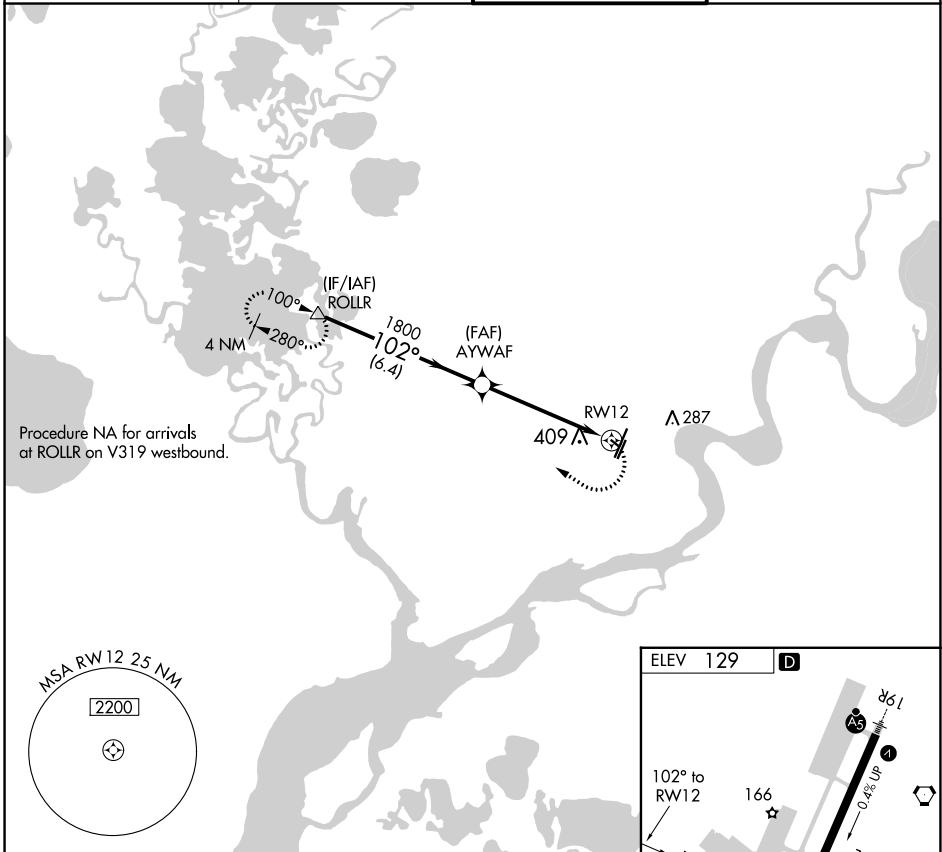
22139

APP CRS	Rwy Idg	N/A
<b>102°</b>	TDZE	N/A
	Apt Elev	<b>129</b>

# RNAV (GPS)-A

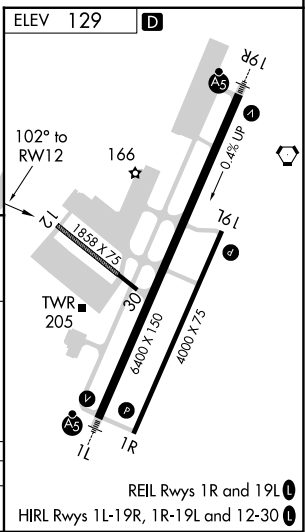
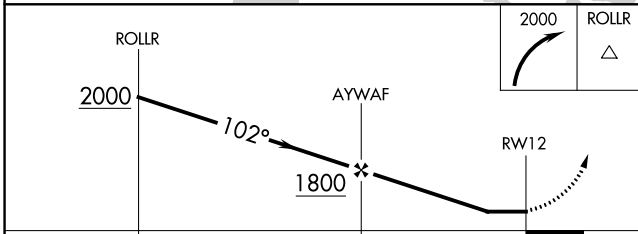
BETHEL(BET)(PABE)

RNP APCH.		MISSED APPROACH: Climbing right turn to 2000 direct ROLLR and hold.	
Circling NA west of Rwy 1L-19R.			
ATIS	ANCHORAGE CENTER	BETHEL TOWER *	GND CON
<b>119.8</b>	<b>125.2 372.0</b>	<b>118.7 (CTAF)</b>	<b>121.7</b>



AK, 25 JAN 2024 to 21 MAR 2024

AK, 25 JAN 2024 to 21 MAR 2024



CATEGORY	A	B	C	D
CIRCLING	660-1	531 (600-1)	660-1½ 531 (600-1½)	680-2 551 (600-2)

BETHEL, ALASKA  
Amdt 1C 20JUN19

60°47'N-161°50'W

# BETHEL (BET)(PABE)

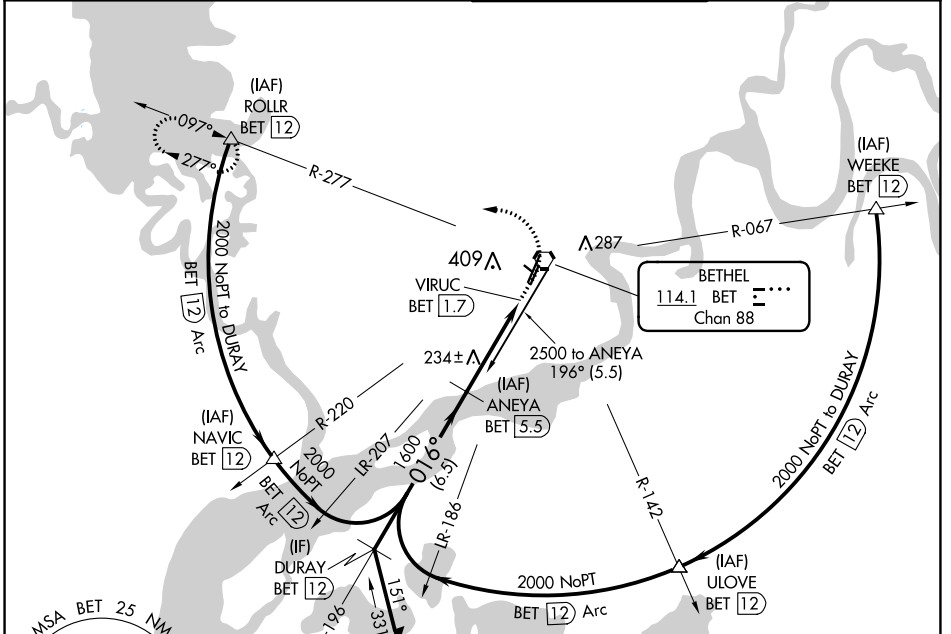
## RNAV (GPS)-A

VORTAC BET <b>114.1</b> Chan <b>88</b>	APP CRS <b>016°</b>	Rwy ldg TDZE <b>127</b> Apt Elev <b>129</b>
--	------------------------	---

# VOR RWY 1L

BETHEL (BET)(PABE)

DME required. ▼ Circling NA west of Rwy 1L-19R. For inop ALS, increase S-1L Cat C/D visibility to RVR 5500. ▲		MALSR AS	MISSED APPROACH: Climb to 800 then climbing left turn to 2000 on BET VORTAC R-277 to ROLLR/12 DME and hold.
ATIS <b>119.8</b>	ANCHORAGE CENTER <b>125.2 372.0</b>	BETHEL TOWER * <b>118.7 (CTAF)</b> 0	GND CON <b>121.7</b>



AK, 25 JAN 2024 to 21 MAR 2024

AK, 25 JAN 2024 to 21 MAR 2024

