

APP CRS	Rwy Idg	4250
325°	TDZE	3560
	Apt Elev	3560

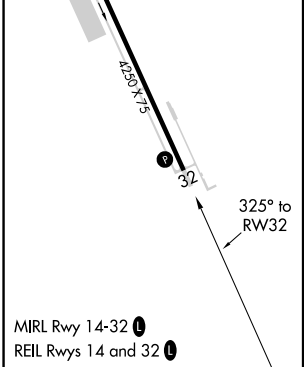
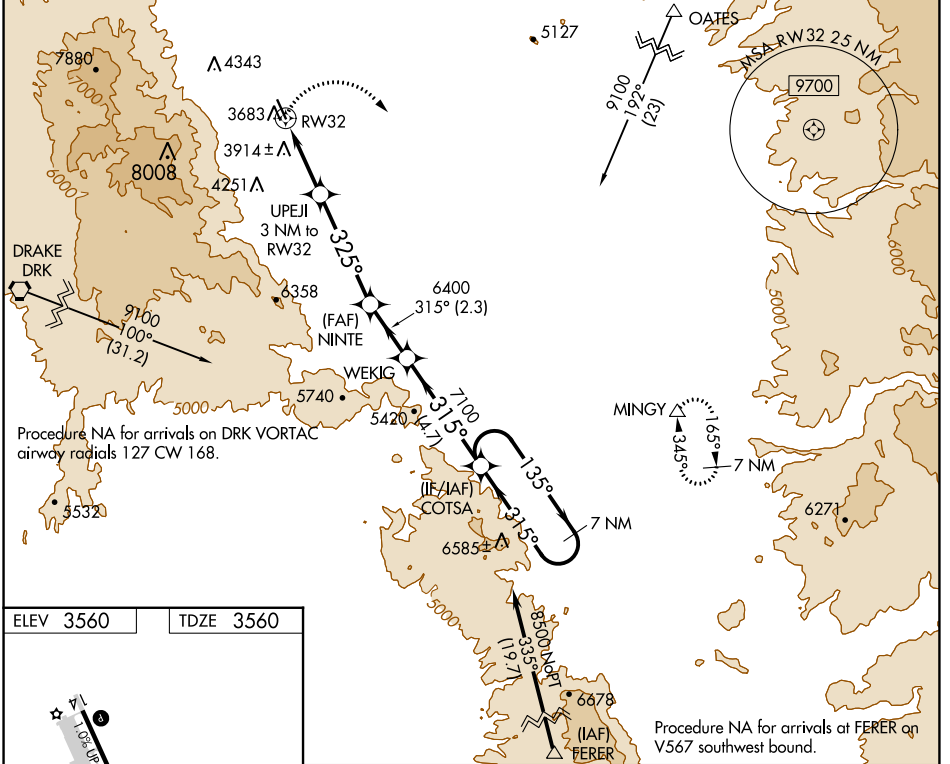
RNAV (GPS) RWY 32

COTTONWOOD (P52)

NA Circling NA southwest of Rwy 14-32. DME/DME RNP-0.3 NA. Procedure NA at night. Helicopter visibility reduction below 1 SM NA. When local altimeter setting not received, use Sedona altimeter setting and increase all MDA 200 feet, increase LNAV and Circling Cat A/B visibility 1/4 mile, LNAV Cat C visibility 1/2 mile, Circling Cat C visibility 3/4 mile.

MISSED APPROACH: Climbing right turn to 10000 direct MINGY and hold, continue climb-in-hold to 10000.

AWOS-3 119.925	PHOENIX APP CON 126.375 236.775	UNICOM 122.7 (CTAF)
---------------------------------	--	--------------------------------------



10000	MINGY						
		UPEJI 3 NM to RW32	NINTE	WEKIG	COTSA		
		4740	6400	7100	8500		
		3 NM	4.3 NM	2.3 NM	4.7 NM		
CATEGORY		A	B	C	D		
LNAV MDA		4260-1	700 (700-1)	4260-2	700 (700-2)	NA	
C CIRCLING		4260-1	700 (700-1)	4260-2	700 (700-2)	NA	

SW-4, 22 FEB 2024 to 21 MAR 2024

SW-4, 22 FEB 2024 to 21 MAR 2024