

(SNDRS2.SNDRS) 19227

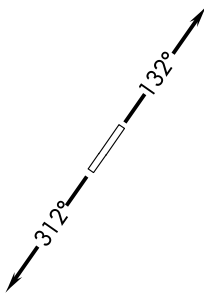
SNDRS TWO DEPARTURE (RNAV)

LIVINGSTON COUNTY SPENCER J HARDY (OZW)

AL-5485 (FAA)

HOWELL, MICHIGAN

AWOS-3
118.875
CLNC DEL
121.725
CTAF
123.0
DETROIT DEP CON
132.35 284.0



**TOP ALTITUDE:
ASSIGNED BY ATC**

DEPARTURE ROUTE DESCRIPTION

TAKEOFF RUNWAY 13: Climb on heading 132° or as assigned for RADAR vectors to cross JWELS at or above 4000, thence....

TAKEOFF RUNWAY 31: Climb on heading 312° or as assigned for RADAR vectors to cross JWELS at or above 4000, thence....

...on track 218° to SNDRS, then on (transition). Maintain ATC assigned altitude, expect filed altitude 10 minutes after departure.

BGHR TRANSITION (SNDRS2.BGHR):

TORR TRANSITION (SNDRS2.TORR):

NOTE: RNAV 1.

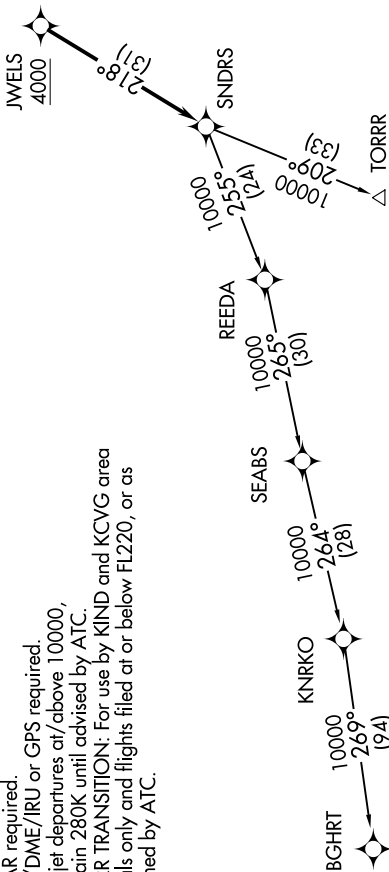
NOTE: RADAR required.

NOTE: DME/DME/IRU or GPS required.

NOTE: Turbjet departures at/above 10000, maintain 280K until advised by ATC.

NOTE: TORR TRANSITION: For use by KIND and KCVG area arrivals only and flights filed at or below FL220, or as assigned by ATC.

TAKEOFF MINIMUMS:
Standard.



NOTE: Chart not to scale.

EC-1, 22 FEB 2024 to 21 MAR 2024

EC-1, 22 FEB 2024 to 21 MAR 2024

SNDRS TWO DEPARTURE (RNAV)

(SNDRS2.SNDRS) 15AUG19

HOWELL, MICHIGAN

LIVINGSTON COUNTY SPENCER J HARDY (OZW)