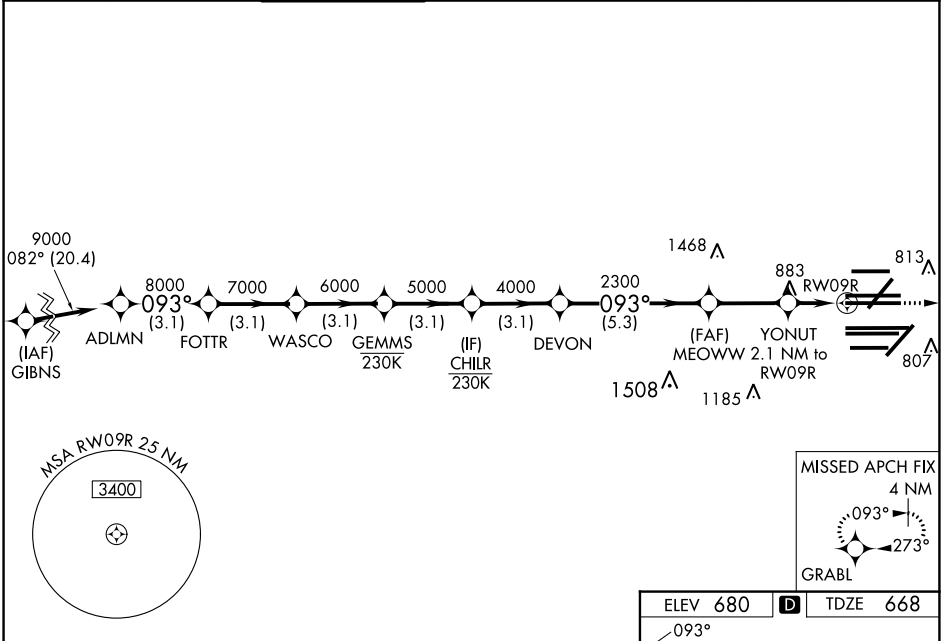


WAAS CH <b>78204</b> <b>W09A</b>	APP CRS <b>093°</b>	Rwy ldg <b>11260</b> TDZE <b>668</b> Apt Elev <b>680</b>
--	------------------------	--

# RNAV (GPS) RWY 9R

CHICAGO O'HARE INTL (ORD)

RNP APCH - GPS.		<p>Simultaneous approach authorized. LNAV procedure NA during simultaneous operations. Use of FD or AP required during simultaneous operations. For uncompensated Baro-VNAV systems, LNAV/VNAV NA below -19°C or above 54°C. For inop ALS, increase LNAV/VNAV all Cats visibility to RVR 4500. For inop ALS, increase LNAV Cats C/D visibility to 1 3/8 SM.</p>		<p>MISSED APPROACH: Climb to 4000 direct GRABL and hold.</p>		
D-ATIS <b>135.4</b> <b>282.225</b>	CHICAGO APP CON <b>119.0 292.125</b>	O'HARE TOWER <b>126.9 348.0</b>	GND CON (TWR NORTH) <b>124.125</b> (TWR SOUTH) <b>118.05</b> (ALL TWRs) <b>226.675</b>	(TWR CENTER) <b>121.75</b> (OBND) <b>121.9</b> (IBND)	CLNC DEL <b>121.6</b>	CPDLC



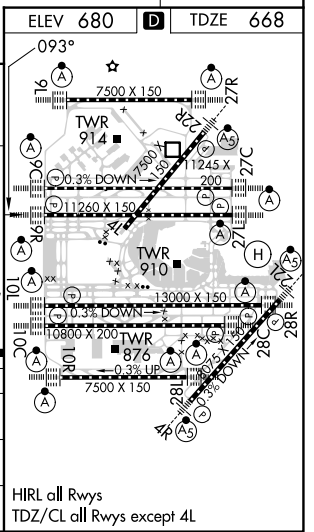
VGSI and RNAV glidepath not coincident (VGSI Angle 3.00/TCH 76).

ADLMN	FOTTR	WASCO	GEMMS	CHILR	DEVON	MEOWW	YONUT	RWY09R
9000	8000	7000	6000	5000	4000	2300	1380	
GP 3.00° TCH 58								
	3.1 NM	3.1 NM	3.1 NM	3.1 NM	3.1 NM	5.3 NM	2.8 NM	0.9 NM
CATEGORY	A		B		C		D	
LPV DA			868/18		200 (200-1/2)			
LNAV/VNAV DA			976/24		308 (300-1/2)			
LNAV MDA	1140/24		472 (500-1/2)		1140/50		472 (500-1)	

4000 GRABL

1.2 NM to RWY09R

1.2 NM to RWY09R



EC-3, 22 FEB 2024 to 21 MAR 2024

EC-3, 22 FEB 2024 to 21 MAR 2024