

SW-3, 22 FEB 2024 to 21 MAR 2024

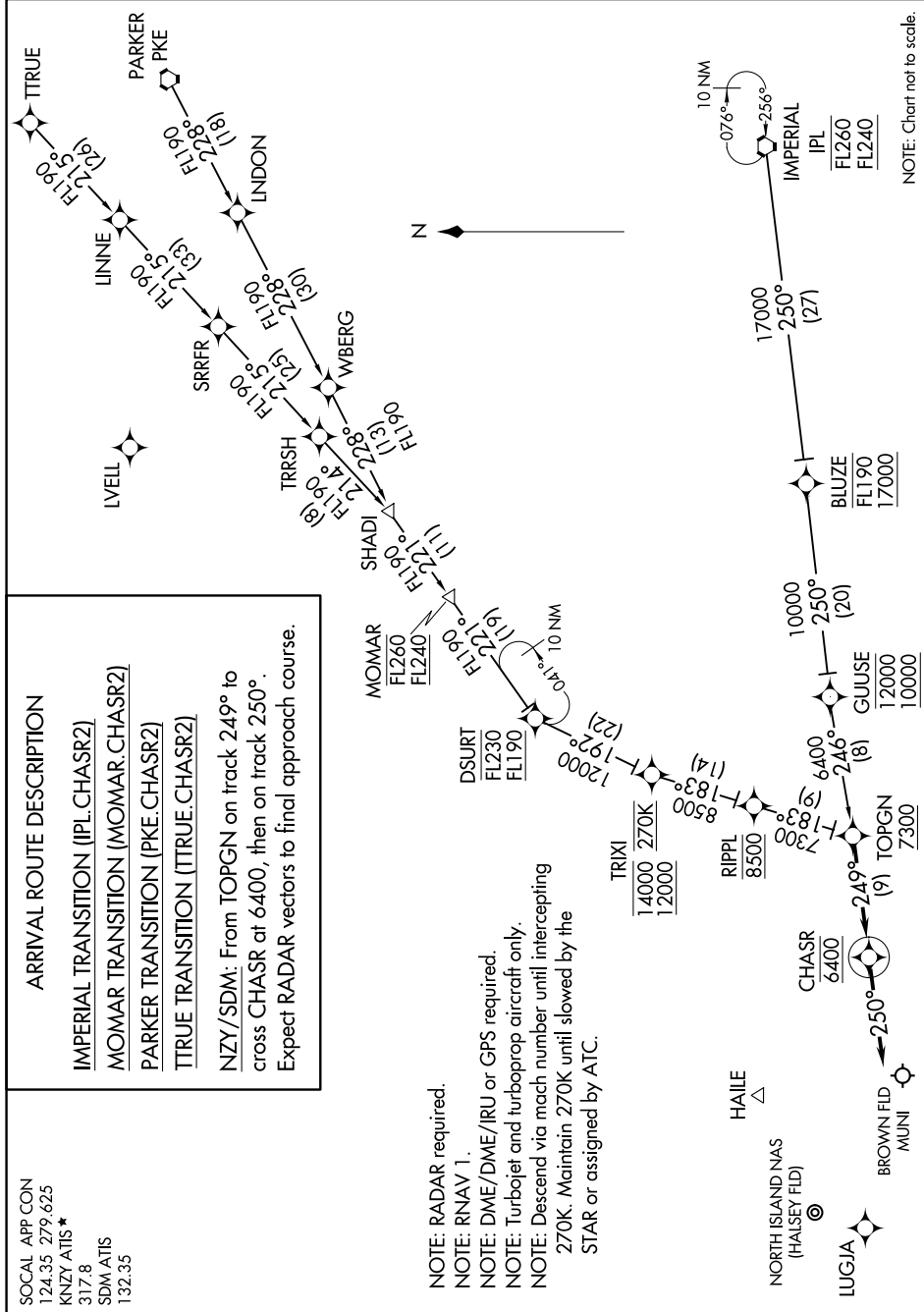
ARRIVAL ROUTE DESCRIPTION

IMPERIAL TRANSITION (IPL.CHASR2)
MOMAR TRANSITION (MOMAR.CHASR2)
PARKER TRANSITION (PKE.CHASR2)
TTRUE TRANSITION (TTRUE.CHASR2)

NZY/SDM: From TOPGN on track 249° to cross CHASR at 6400, then on track 250°. Expect RADAR vectors to final approach course.

SOCAL APP CON
 124.35 279.625
 KNZY ATIS ★
 317.8
 SDM ATIS
 132.35

NOTE: RADAR required.
 NOTE: RNAV 1.
 NOTE: DME/DME/IRU or GPS required.
 NOTE: Turbojet and turboprop aircraft only.
 NOTE: Descend via mach number until intercepting 270K. Maintain 270K until slowed by the STAR or assigned by ATC.



NOTE: Chart not to scale.

SW-3, 22 FEB 2024 to 21 MAR 2024