

WAAS CH 62946 W 14A	APP CRS 134°	Rwy Idg TDZE Apt Elev	3603 1446 1446
---	------------------------	-----------------------------	---

RNAV (GPS) RWY 14

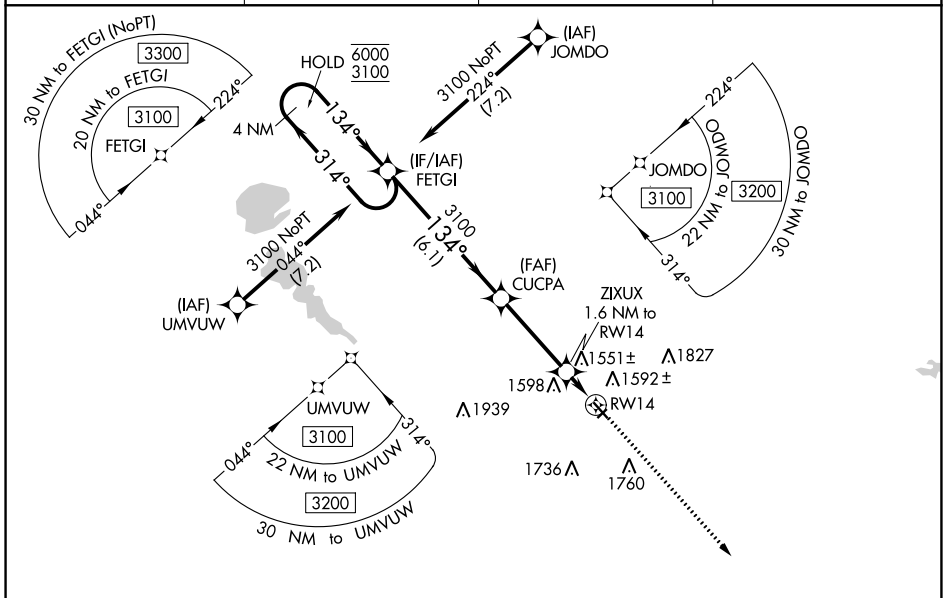
JACKSON MUNI (MJQ)

RNP APCH - GPS.

For uncompensated Baro-VNAV systems, LNAV/VNAV NA below -17°C or above 54°C. Circling NA to Rwy 4 and 22. Rwy 14 helicopter visibility reduction below 3/4 SM NA.

MISSED APPROACH: Climb to 3100 direct MCQIN and hold.

AWOS-3 118.1	MINNEAPOLIS CENTER 127.75 257.7	GCO 121.725	UNICOM 122.8 (CTAF) 0
------------------------	---	-----------------------	---------------------------------

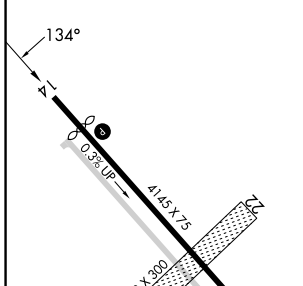


NC-1, 22 FEB 2024 to 21 MAR 2024

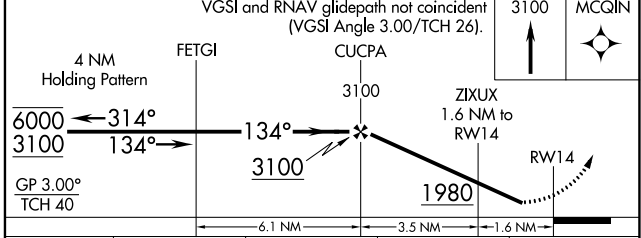
NC-1, 22 FEB 2024 to 21 MAR 2024

△ 2041

ELEV 1446	TDZE 1446
-----------	-----------



REIL Rwy 14 and 32	MIRL Rwy 14-32
--------------------	----------------



CATEGORY	A	B	C	D
LPV DA	1696-1	250 (300-1)		NA
LNAV/VNAV DA	1838-1 1/8	392 (400-1 1/8)		NA
LNAV MDA	1820-1	374 (400-1)		NA
CIRCLING	2040-1	594 (600-1)		NA