


APP CRS 143°	Rwy Idg 8800
TDZE 1303	Apt Elev 1335

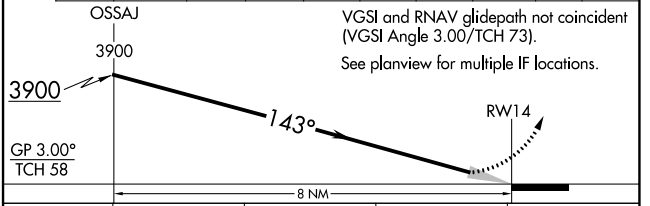
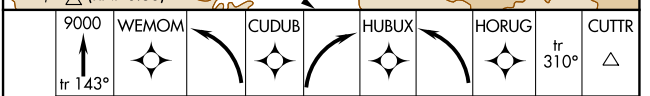
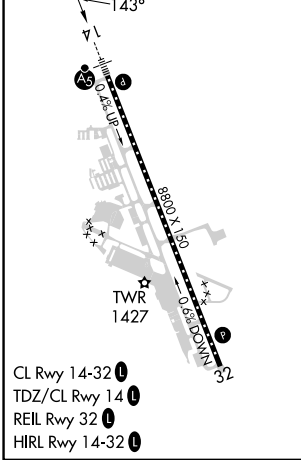
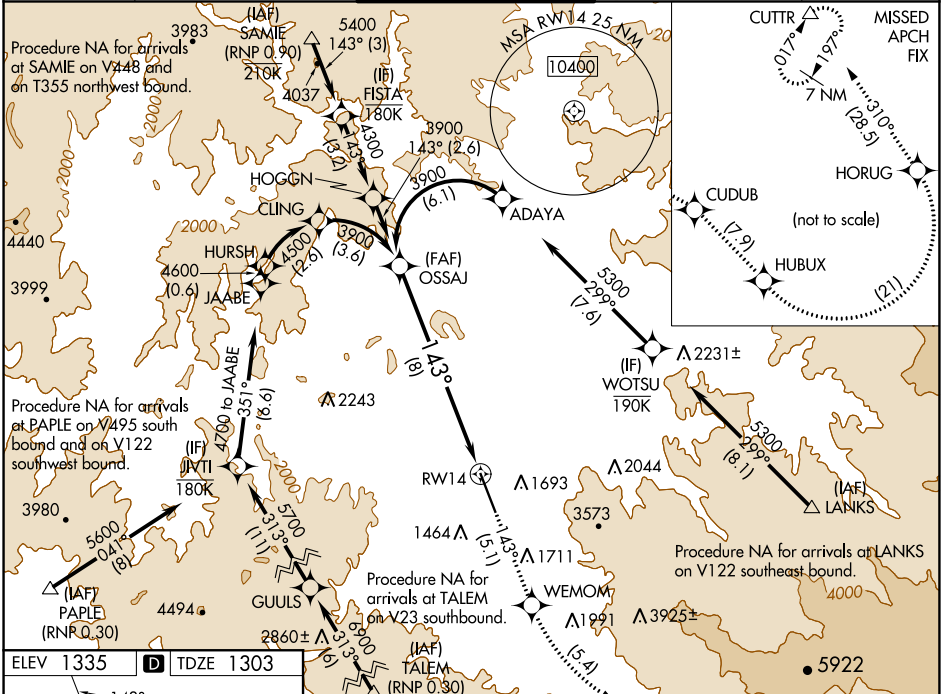
RNAV (RNP) Z RWY 14

ROGUE VALLEY INTL-MEDFORD (MFR)

RNP AR APCH-GPS.
 For uncompensated Baro-VNAV systems, procedure NA below -6°C or above 54°C.
 For inop ALS, increase RNP 0.30 all Cats visibility to 2 SM.

MALSR

 MISSED APPROACH: Climb to 9000 on track 143° to WEMOM, left turn to CUDUB, right turn HUBUX, left turn HORUG, then on track 310° to CUTTR and hold. * Missed approach requires minimum climb of 244 feet per NM to 5000.

ATIS 127.25	CASCADE APP CON * 124.3 379.9	MEDFORD TOWER * 119.4 (CTAF) 257.8	GND CON 121.8	UNICOM 122.95
-----------------------	---	--	-------------------------	-------------------------



CATEGORY	A	B	C	D
RNP 0.30 DA*	1759/45 456 (500-7%)			
RNP 0.30 DA	2049-1¼ 746 (800-1¼)			

NW-1, 22 FEB 2024 to 21 MAR 2024

NW-1, 22 FEB 2024 to 21 MAR 2024

AUTHORIZATION REQUIRED