

WAAS CH <b>58332</b> <b>W19A</b>	APP CRS <b>186°</b>	Rwy Idg TDZE <b>522</b> Apt Elev <b>522</b>	<b>5002</b>
--	------------------------	---	-------------

# RNAV (GPS) RWY 19

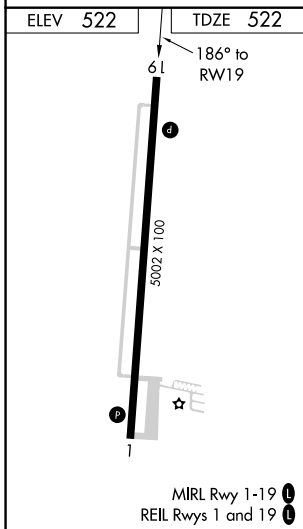
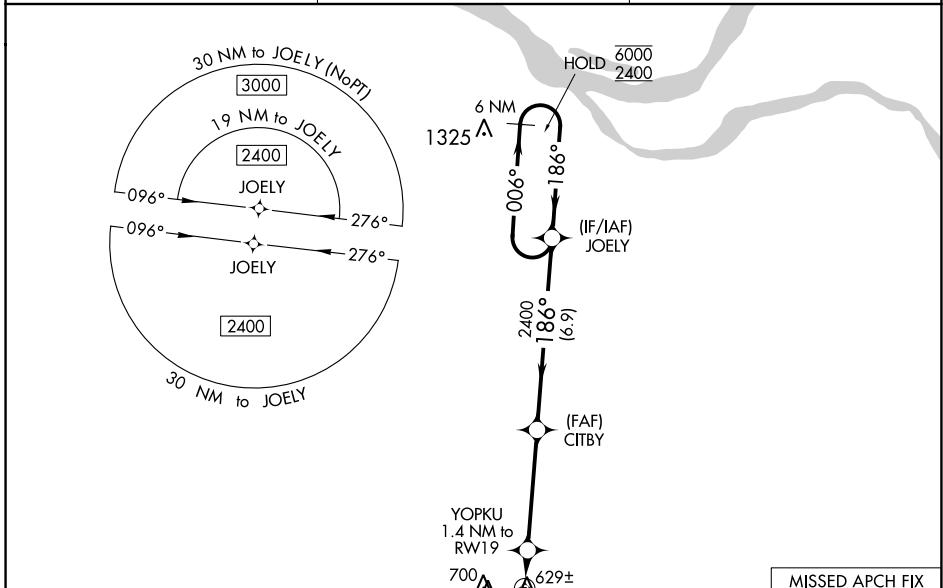
MAYFIELD GRAVES COUNTY (M25)

RNP APCH - GPS.

**⚠** Circling Rwy 19 NA at night. Rwy 19 helicopter visibility reduction below 3/4 SM NA. Baro-VNAV NA when using Paducah altimeter setting. For uncompensated Baro-VNAV systems, LNAV/VNAV NA below -16°C or above 54°C. When local altimeter setting not received, use Paducah altimeter setting: increase LPV DA to 833 feet, LNAV/VNAV DA to 977 feet and all visibilities 1/4 SM; increase all MDAs 80 feet and visibility Cats C and D 1/4 SM.

**⚠** MISSED APPROACH: Climb to 2300 direct LUXON and hold.

AWOS-3 <b>120.625</b>	MEMPHIS CENTER <b>133.65 292.15</b>	UNICOM <b>122.8 (CTAF) 0</b>
--------------------------	--	---------------------------------



ELEV 522	TDZE 522	MISSED APCH FIX LUXON 6 NM	
2300	LUXON	VGSi and RNAV glidepath not coincident (VGSi Angle 3.00/TCH 35).	
YOPKU 1.4 NM to RW19	CITBY 2400	JOELY Holding Pattern	
RW19	1020	186°	006° → 6000 ← 186° 2400
1.4 NM	4.3 NM	6.9 NM	GP 3.00° TCH 56
CATEGORY	A	B	C
LPV DA	772-1 250 (300-1)		
LNAV/VNAV DA	916-1 394 (400-1 1/2)		
LNAV MDA	880-1 358 (400-1)		
<input checked="" type="checkbox"/> CIRCLING	1060-1 538 (600-1)	1060-1 1/2 538 (600-1 1/2)	1280-2 1/2 758 (800-2 1/2)

SE-1, 22 FEB 2024 to 21 MAR 2024

SE-1, 22 FEB 2024 to 21 MAR 2024