

WAAS CH 86935 W01A	APP CRS 009°	Rwy Idg TDZE Apt Elev	5007 499 499
--	------------------------	-----------------------------	---

RNAV (GPS) RWY 1

WILLIAM L WHITEHURST FLD (M08)

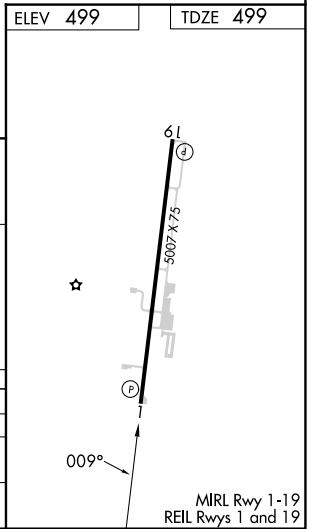
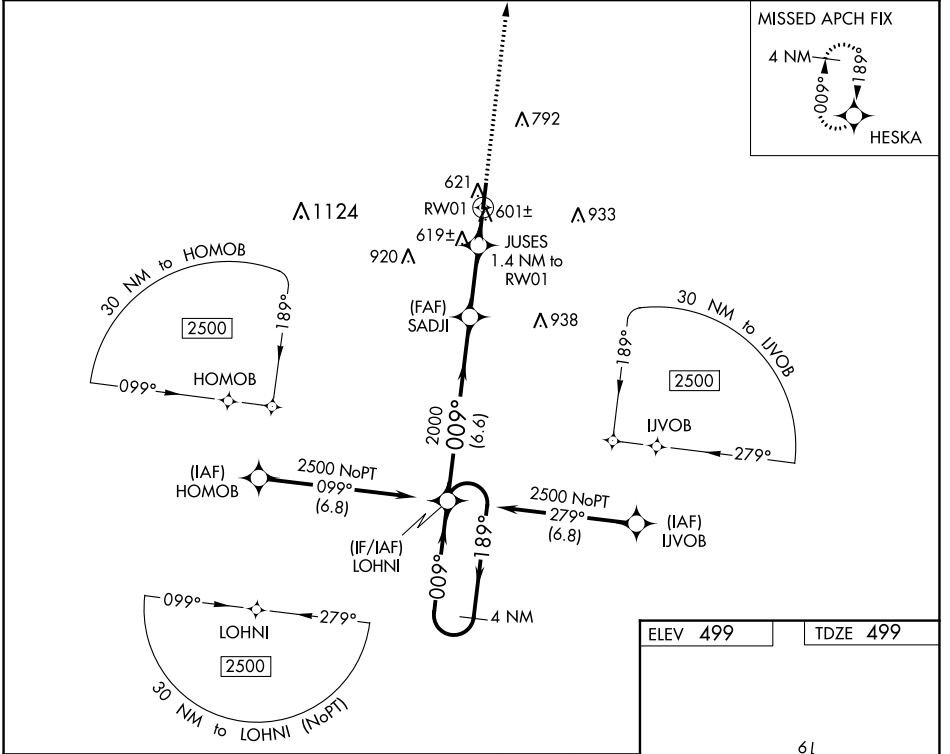
⚠ NA DME/DME RNP-0.3 NA. When local altimeter setting not received, use Jackson altimeter setting and increase all MDA 80 feet, increase LP Cats C/D visibilities $\frac{3}{8}$ mile, and LNAV Cats C/D and Circling Cats C/D visibilities $\frac{1}{4}$ mile. Rwy 1 helicopter visibility reduction below 1 SM NA.

MISSED APPROACH: Climb to 2500 direct HESKA and hold.

AWOS-3
121.125

MEMPHIS CENTER
124.35 318.1

UNICOM
123.0 (CTAF)



CATEGORY	Visual Segment - Obstacles.			
	A	B	C	D
LP MDA	860-1 361 (400-1)			
LNAV MDA	880-1	381 (400-1)	880-1 $\frac{1}{8}$	381 (400-1 $\frac{1}{8}$)
C CIRCLING	980-1	481 (500-1)	1100-1 $\frac{3}{4}$ 601 (700-1 $\frac{3}{4}$)	1360-2 $\frac{3}{4}$ 861 (900-2 $\frac{3}{4}$)

WAAS CH 63035 W19A	APP CRS 189°	Rwy Idg TDZE Apt Elev	5007 497 499
--	------------------------	-----------------------------	---

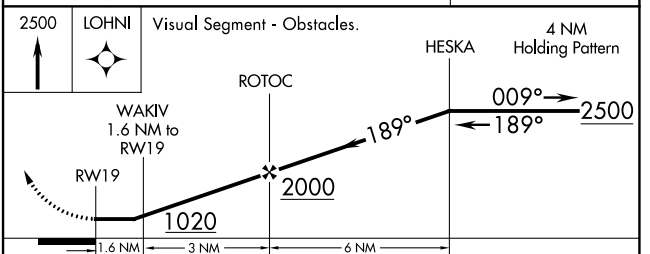
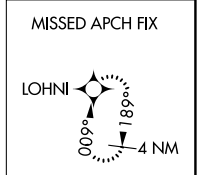
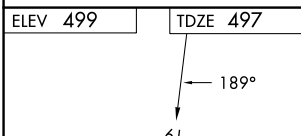
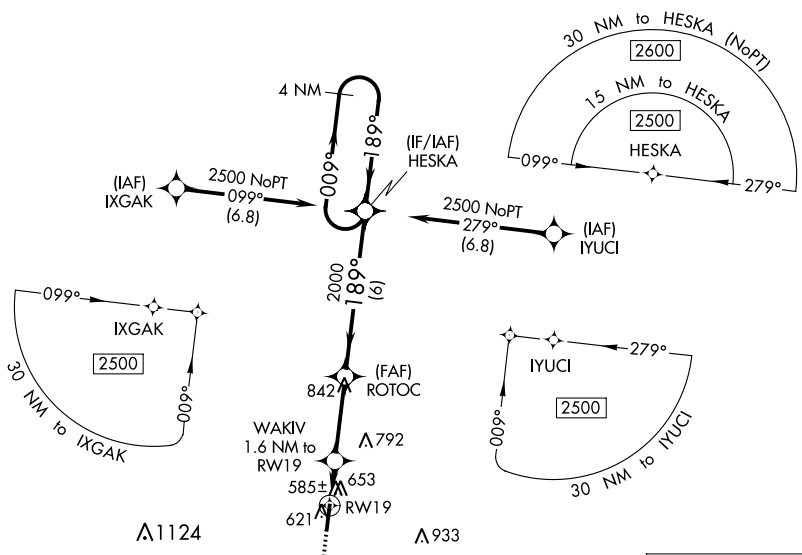
RNAV (GPS) RWY 19

WILLIAM L WHITEHURST FLD (M08)

⚠ NA DME/DME RNP-0.3 NA. When local altimeter setting not received, use Jackson altimeter setting and increase all MDA 80 feet, increase LP Cats C/D visibilities ¼ mile, increase LNAV Cats C/D visibilities 1/8 mile and Circling Cats C/D visibilities ¼ mile. Rwy 19 helicopter visibility reduction below ¾ SM NA. Rwy 1 helicopter visibility reduction below 1 SM NA.

MISSED APPROACH: Climb to 2500 direct LOHNI and hold.

AWOS-3 121.125	MEMPHIS CENTER 124.35 318.1	UNICOM 123.0 (CTAF)
--------------------------	---------------------------------------	-------------------------------



CATEGORY	A	B	C	D
LP MDA	840-1 343 (400-1)			
LNAV MDA	920-1	423 (500-1)	920-1¼	423 (500-1¼)
C CIRCLING	980-1	481 (500-1)	1100-1¾ 601 (700-1¾)	1360-2¾ 861 (900-2¾)

SE-1, 22 FEB 2024 to 21 MAR 2024

SE-1, 22 FEB 2024 to 21 MAR 2024