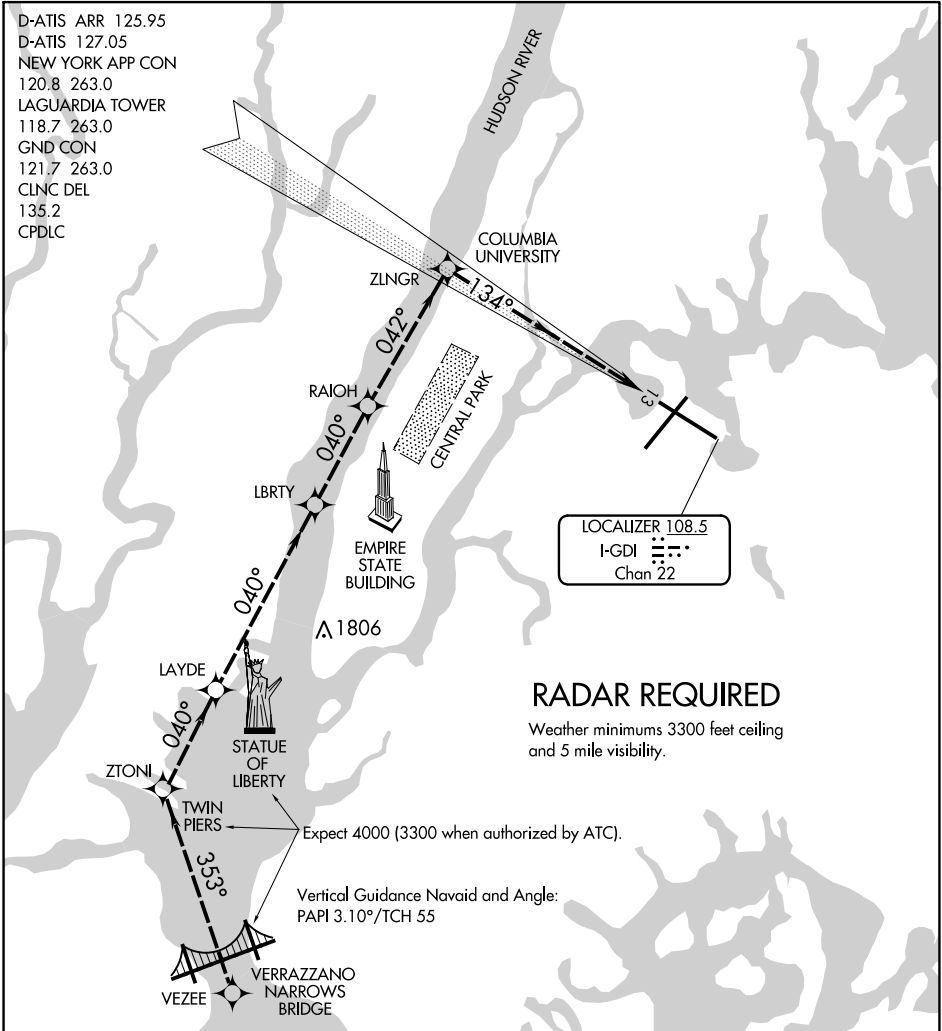


RIVER VISUAL RWY 13

AL-289 (FAA)

LAGUARDIA (LGA)
NEW YORK, NEW YORK

D-ATIS ARR 125.95
 D-ATIS 127.05
 NEW YORK APP CON
 120.8 263.0
 LAGUARDIA TOWER
 118.7 263.0
 GND CON
 121.7 263.0
 CLNC DEL
 135.2
 CPDLC



RADAR REQUIRED

Weather minimums 3300 feet ceiling and 5 mile visibility.

Expect 4000 (3300 when authorized by ATC).

Vertical Guidance Navaid and Angle:
PAPI 3.10°/TCH 55

1 NM	2	3	4	5	6	7	8	9	10	11	12	13	14	15	16
------	---	---	---	---	---	---	---	---	----	----	----	----	----	----	----

RIVER VISUAL RWY 13 APPROACH

When cleared for the RIVER VISUAL RWY 13 approach, remain over the Hudson River until starting the turn to final approach north of Central Park. Expect 4000 until abeam Statue of Liberty (3300 when authorized by ATC).

NE-2, 22 FEB 2024 to 21 MAR 2024

NE-2, 22 FEB 2024 to 21 MAR 2024

RIVER VISUAL RWY 13

40°47'N-73°52'W

NEW YORK, NEW YORK
LAGUARDIA (LGA)