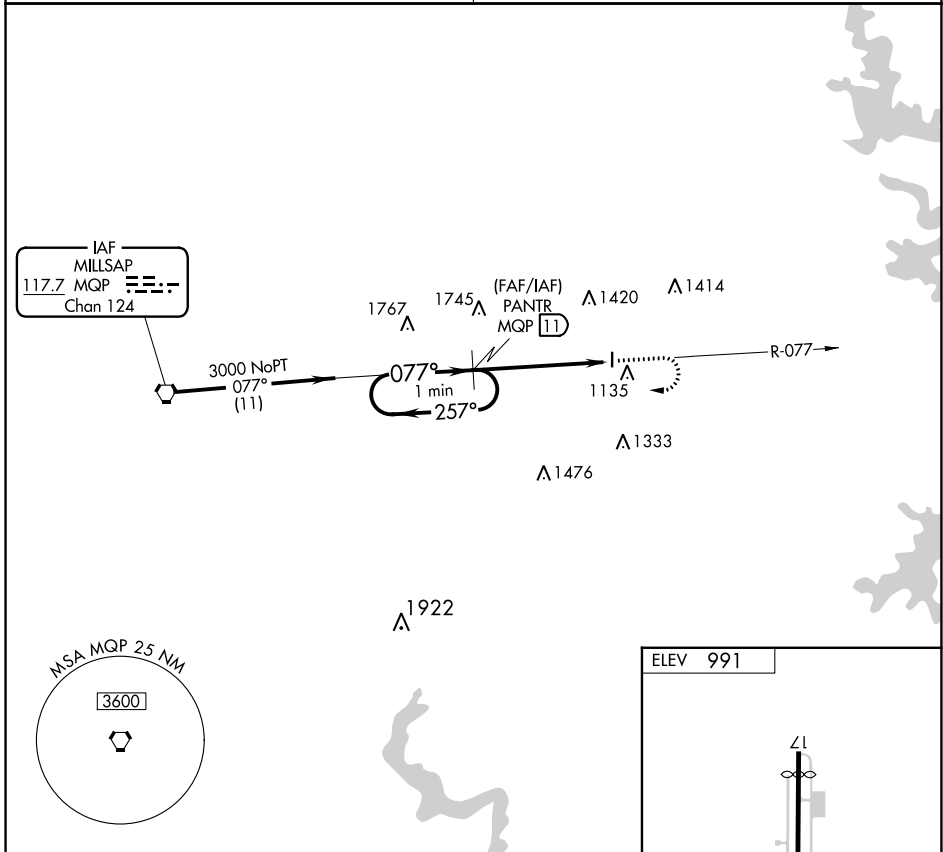


VORTAC MQP <b>117.7</b> Chan 124	APP CRS <b>077°</b>	Rwy Idg TDZE Apt Elev	<b>N/A</b> <b>N/A</b> <b>991</b>
--	------------------------	-----------------------------	--

**VOR/DME-A**  
PARKER COUNTY (WEA)

<b>▽</b> <b>▲</b> NA Use Fort Worth Meacham altimeter setting.	MISSED APPROACH: Climb to 1900 then climbing right turn to 3000 via heading 290° and MQP R-077 to PANTR and hold.
REGIONAL APP CON <b>135.975 379.9</b>	UNICOM <b>122.7 (CTAF)</b>



SC-2, 22 FEB 2024 to 21 MAR 2024

SC-2, 22 FEB 2024 to 21 MAR 2024

