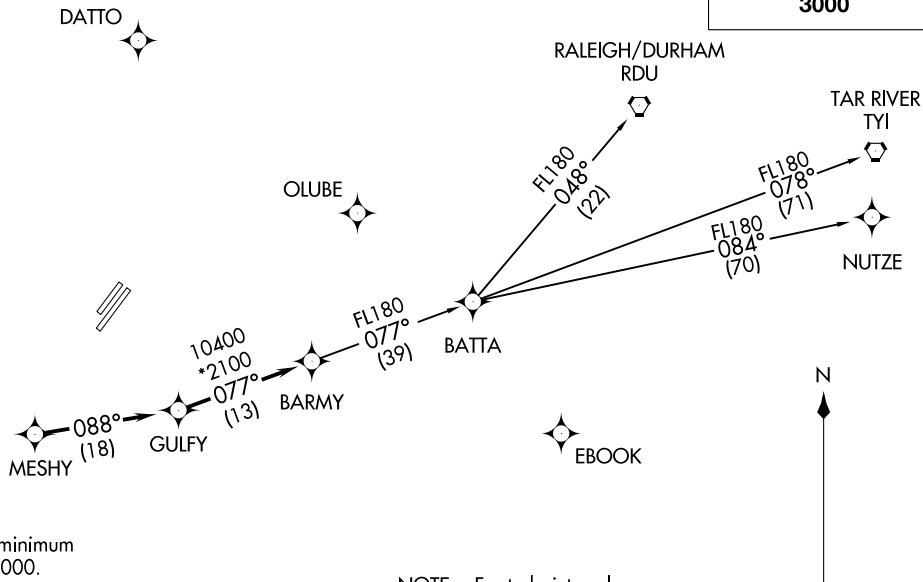


BARMY FOUR DEPARTURE (RNAV)  
(BARMY4.BARMY) 03JAN19

AWOS-3  
128.175  
CLNC DEL  
121.75 254.375  
GND CON  
121.75 254.375  
STANLY COUNTY TOWER ★  
126.275 (CTAF) 291.9  
CHARLOTTE DEP CON  
128.325 307.8

**TOP ALTITUDE:  
3000**



**TAKEOFF MINIMUMS**

Rwys 4L, 22R: NA.  
Rwy 22L: Standard.  
Rwy 4R: 300-1½ or standard with minimum climb of 276' per NM to 1000.

**DEPARTURE ROUTE DESCRIPTION**

Climb on heading assigned by ATC, expect RADAR vectors to MESHY, then on depicted route to BARMY. Then on assigned transition. Maintain 3000, expect clearance to filed altitude within 10 minutes after departure.

NUTZE TRANSITION (BARMY4.NUTZE)  
RALEIGH/DURHAM TRANSITION (BARMY4.RDU)  
TAR RIVER TRANSITION (BARMY4.TYI)

- NOTE: For turbojets only.
- NOTE: DME/DME/IRU or GPS required.
- NOTE: RNAV 1.
- NOTE: RADAR required.
- NOTE: If unable to accept climb rates, advise ATC on initial contact.
- NOTE: Transponder code will be issued via PDC or Charlotte CLNC DEL.
- NOTE: Upon reaching 10000 MSL, accelerate to and maintain 280K, if unable advise ATC.

NOTE: Chart not to scale.

ALBEMARLE, NORTH CAROLINA  
STANLY COUNTY (VTJ)

(BARMY4.BARMY) 23110  
AL-6707 (FAA)

STANLY COUNTY (VTJ)  
ALBEMARLE, NORTH CAROLINA

(BEAVY5.BEAVY) 23110

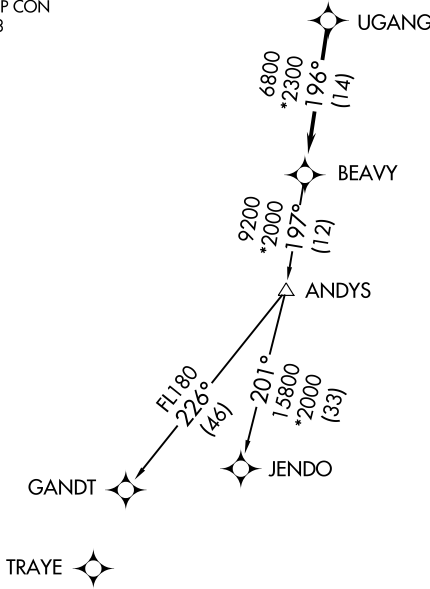
AL-6707 (FAA)

STANLY COUNTY (VUJ)  
ALBEMARLE, NORTH CAROLINA

# BEAVY FIVE DEPARTURE (RNAV)

AWOS-3  
128.175  
CLNC DEL  
121.75 254.375  
GND CON  
121.75 254.375  
STANLY COUNTY TOWER ★  
126.275 (CTAF) 291.9  
CHARLOTTE DEP CON  
128.325 307.8

**TOP ALTITUDE:  
3000**



### TAKEOFF MINIMUMS

Rwys 4L, 22R: NA  
Rwy 22L: Standard.  
Rwy 4R: 300-1½ or standard with minimum climb of 276' per NM to 1000.

- NOTE: For turbojets only.
- NOTE: DME/DME/IRU or GPS required.
- NOTE: RNAV 1.
- NOTE: RADAR required.
- NOTE: If unable to accept climb rates, advise ATC on initial contact.
- NOTE: Upon reaching 10000 MSL, accelerate to and maintain 280K, if unable advise ATC.
- NOTE: Transponder code will be issued via PDC or Charlotte CLNC DEL.

NOTE: Chart not to scale.

## DEPARTURE ROUTE DESCRIPTION

Climb on heading assigned by ATC, expect RADAR vectors to UGANG, then on track 196° to BEAVY. Then on assigned transition. Maintain 3000, expect clearance to filed altitude within 10 minutes after departure.

GANDT TRANSITION (BEAVY5.GANDT)  
JENDO TRANSITION (BEAVY5.JENDO)

BEAVY FIVE DEPARTURE (RNAV)

(BEAVY5.BEAVY) 03JAN19

ALBEMARLE, NORTH CAROLINA  
STANLY COUNTY (VUJ)

SE-2, 22 FEB 2024 to 21 MAR 2024

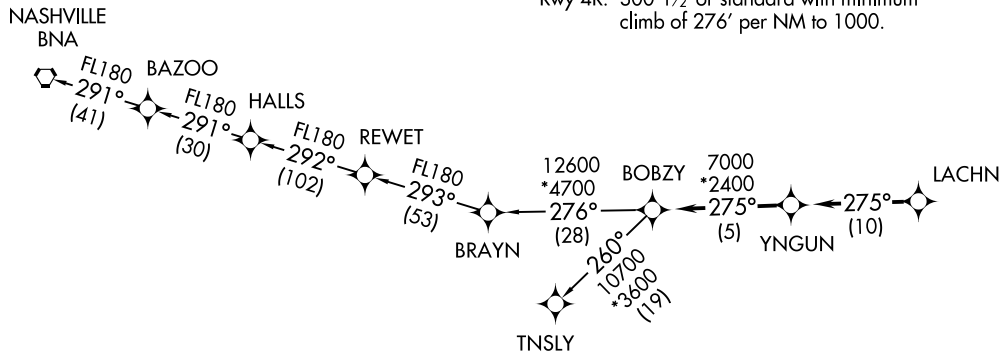
SE-2, 22 FEB 2024 to 21 MAR 2024

**TOP ALTITUDE:  
3000**

TAKEOFF MINIMUMS

Rwys 4L, 22R: NA.  
 Rwy 22L: Standard.  
 Rwy 4R: 300-1½ or standard with minimum  
 climb of 276' per NM to 1000.

AWOS-3  
 128.175  
 CLNC DEL  
 121.75 254.375  
 GND CON  
 121.75 254.375  
 STANLY COUNTY TOWER ★  
 126.275 (CTAF) 291.9  
 CHARLOTTE DEP CON  
 128.325 307.8



BOBZY FOUR DEPARTURE (RNAV)  
 (BOBZY4.BOBZY) 03JAN19

BOBZY FOUR DEPARTURE (RNAV)  
 (BOBZY4.BOBZY) 23110  
 AL-6707 (FAA)

ALBERMARLE, NORTH CAROLINA  
 STANLY COUNTY (VTJJ)

STANLY COUNTY (VTJJ)  
 ALBERMARLE, NORTH CAROLINA

**DEPARTURE ROUTE DESCRIPTION**

▼ Climb on heading assigned by ATC, expect RADAR vectors to LACHN, then on depicted route to BOBZY, then on assigned transition. Maintain 3000. Expect clearance to filed altitude within 10 minutes after departure.

NASHVILLE TRANSITION (BOBZY4.BNA)  
TNSLY TRANSITION (BOBZY4.TNSLY)

- NOTE: For turbojets only.
- NOTE: DME/DME/IRU or GPS required.
- NOTE: RNAV 1.
- NOTE: RADAR required.
- NOTE: If unable to accept climb rates, advise ATC on initial contact.
- NOTE: Upon reaching 10000 MSL, accelerate to and maintain 280K, if unable advise ATC.

NOTE: Chart not to scale.

(ESTRR4.ESTRR) 23110

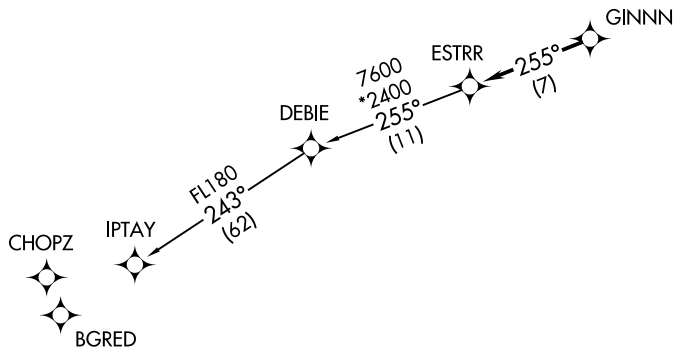
AL-6707 (FAA)

STANLY COUNTY (VUJ)  
ALBEMARLE, NORTH CAROLINA

# ESTRR FOUR DEPARTURE (RNAV)

**TOP ALTITUDE:**  
**3000**

AWOS-3  
128.175  
CLNC DEL  
121.75 254.375  
GND CON  
121.75 254.375  
STANLY COUNTY TOWER ★  
126.275 (CTAF) 291.9  
CHARLOTTE DEP CON  
128.325 307.8



### TAKEOFF MINIMUMS

Rwys 4L, 22R: NA.

Rwy 22L: Standard.

Rwy 4R: 300-1½ or standard with minimum climb of 276' per NM to 1000.

NOTE: For turbojets only.

NOTE: DME/DME/IRU or GPS required.

NOTE: RNAV 1.

NOTE: RADAR required.

NOTE: If unable to accept climb rates, advise ATC on initial contact.

NOTE: Upon reaching 10000 MSL, accelerate to and maintain 280K, if unable advise ATC.

NOTE: Chart not to scale.



### DEPARTURE ROUTE DESCRIPTION

Climb on heading assigned by ATC, expect RADAR vectors to GINNN, then on track 255° to ESTRR, then on IPTAY transition. Maintain 3000, expect clearance to filed altitude within 10 minutes after departure.

IPTAY TRANSITION (ESTRR4.IPTAY)

ESTRR FOUR DEPARTURE (RNAV)

(ESTRR4.ESTRR) 03JAN19

ALBEMARLE, NORTH CAROLINA  
STANLY COUNTY (VUJ)

SE-2, 22 FEB 2024 to 21 MAR 2024

SE-2, 22 FEB 2024 to 21 MAR 2024

(ICONS4.ICONS) 23110

AL-6707 (FAA)

# ICONS FOUR DEPARTURE (RNAV)

STANLY COUNTY (VUJ)  
ALBEMARLE, NORTH CAROLINA

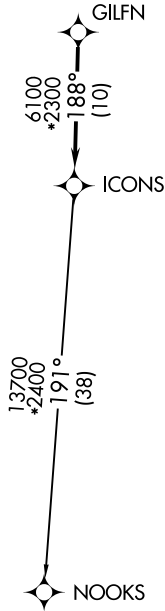
AWOS-3  
128.175  
CLNC DEL  
121.75 254.375  
GND CON  
121.75 254.375  
STANLY COUNTY TOWER★  
126.275 (CTAF) 291.9  
CHARLOTTE DEP CON  
128.325 307.8

**TOP ALTITUDE:  
3000**



### TAKEOFF MINIMUMS

Rwys 4L, 22R: NA.  
Rwy 22L: Standard.  
Rwy 4R: 300-1½ or standard with minimum  
climb of 276' per NM to 1000.



- NOTE: For turbojets only.
- NOTE: DME/DME/IRU or GPS required.
- NOTE: RNAV 1.
- NOTE: RADAR required.
- NOTE: If unable to accept climb rates, advise ATC on initial contact.
- NOTE: Upon reaching 10000 MSL, accelerate to and maintain 280K, if unable advise ATC.
- NOTE: Transponder code will be issued via PDC or Charlotte CLNC DEL.

NOTE: Chart not to scale.



### DEPARTURE ROUTE DESCRIPTION

Climb on heading assigned by ATC, expect RADAR vectors to GILFN, then on track 188° to ICONS. Then on NOOKS transition. Maintain 3000, expect filed altitude within 10 minutes after departure.

NOOKS TRANSITION (ICONS4.NOOKS)

# ICONS FOUR DEPARTURE (RNAV)

(ICONS4.ICONS) 03JAN19

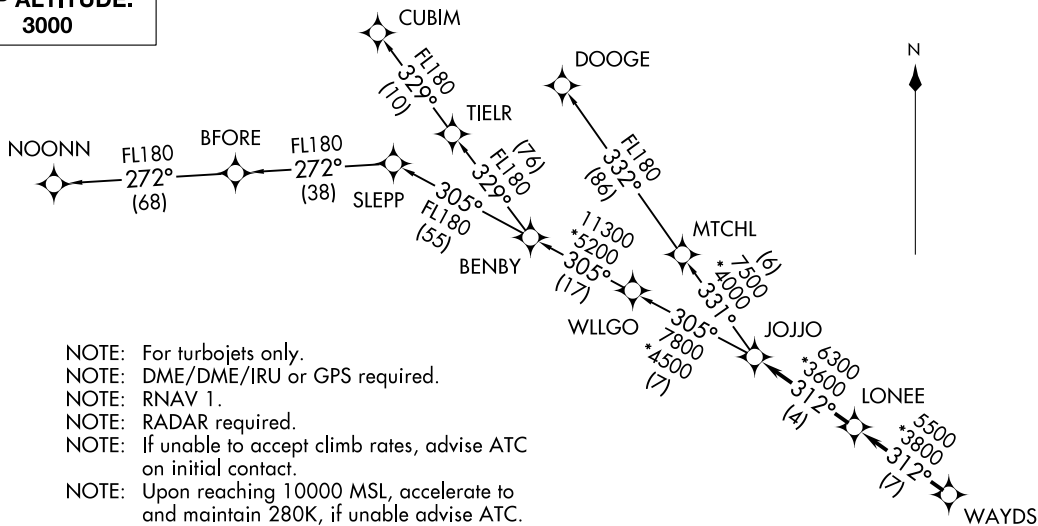
ALBEMARLE, NORTH CAROLINA  
STANLY COUNTY (VUJ)

SE-2, 22 FEB 2024 to 21 MAR 2024

SE-2, 22 FEB 2024 to 21 MAR 2024

JOJO FOUR DEPARTURE (RNAV)  
(JOJO4.JOJO) 03JAN19

**TOP ALTITUDE:  
3000**



AWOS-3  
128.175  
CLNC DEL  
121.75 254.375  
GND CON  
121.75 254.375  
STANLY COUNTY TOWER \*  
126.275 (CTAF) 291.9  
CHARLOTTE DEP CON  
128.325 307.8

(JOJO4.JOJO) 23110  
JOJO FOUR DEPARTURE (RNAV)  
A1-6707 (FAA)

- NOTE: For turbojets only.
- NOTE: DME/DME/IRU or GPS required.
- NOTE: RNAV 1.
- NOTE: RADAR required.
- NOTE: If unable to accept climb rates, advise ATC on initial contact.
- NOTE: Upon reaching 10000 MSL, accelerate to and maintain 280K, if unable advise ATC.
- NOTE: NOONN TRANSITION ATC assigned only.

**DEPARTURE ROUTE DESCRIPTION**

Climb on heading assigned by ATC, expect RADAR vectors to WAYDS, then on depicted route to JOJO. Then on assigned transition. Maintain 3000, expect clearance to filed altitude within 10 minutes after departure.

CUBIM TRANSITION (JOJO4.CUBIM)  
DOOGE TRANSITION (JOJO4.DOOGE)  
NOONN TRANSITION (JOJO4.NOONN)

**TAKEOFF MINIMUMS**

- Rwys 4L, 22R: NA.
- Rwy 22L: Standard.
- Rwy 4R: 300-1½ or standard with minimum climb of 276' per NM to 1000.

NOTE: Chart not to scale.

ALBEMARLE, NORTH CAROLINA  
STANLY COUNTY (VTJ)

STANLY COUNTY (VTJ)  
ALBEMARLE, NORTH CAROLINA

(KER3.KER) 23110  
**KERMIT THREE DEPARTURE**

AL-6707 (FAA)

STANLY COUNTY (VUJ)  
 ALBEMARLE, NORTH CAROLINA

**TOP ALTITUDE:  
 3000**

AWOS-3  
 128.175  
 CLNC DEL  
 121.75 254.375  
 GND CON  
 121.75 254.375  
 STANLY COUNTY TOWER★  
 126.275 (CTAF) 291.9  
 CHARLOTTE DEP CON  
 128.325 307.8

**PULASKI**  
 116.8 PSK  
 Chan 115  
 N37°05.26'  
 W80°42.77'

**NALEY**  
 N36°21.16'  
 W80°48.41'

**BARRETTS MOUNTAIN**  
 113.75 BZM  
 Chan 84(Y)

**SUGARLOAF MOUNTAIN**  
 112.2 SUG  
 Chan 59

**CHARLOTTE**  
 115.0 CLT  
 Chan 97  
 N35°11.42'  
 W80°57.11'

**BOBZY**  
 N35°11.13'  
 W81°38.05'

**JOTTA**  
 N36°00.88'  
 W80°50.96'  
 L-25

**RALEIGH/DURHAM**  
 117.2 RDU  
 Chan 119

**MERIL**  
 N35°36.79'  
 W79°26.03'  
 L-36

**SANDHILLS**  
 111.8 SDZ  
 Chan 55

**NEANO**  
 N35°04.88'  
 W81°59.79'  
 L-25

**DEBIE**  
 N34°55.82'  
 W81°48.53'

**FOOTHILLS**  
 113.4 ODF  
 Chan 81

**ANDYS**  
 N34°22.25'  
 W81°08.63'  
 L-24-25

**HAMLN**  
 N34°21.54'  
 W80°46.71'  
 H-12

**CHESTERFIELD**  
 114.55 CTF  
 Chan 92(Y)

**WALUT**  
 N34°40.00'  
 W80°50.53'

**LILLS**  
 N34°56.13'  
 W79°55.81'  
 L-25-35-36

**TREAL**  
 N33°04.18'  
 W81°26.46'  
 H-9-12

NOTE: For turbojet aircraft only.  
 NOTE: RADAR and DME required.  
 NOTE: Upon reaching 10000 MSL, accelerate to and maintain 280K, if unable advise ATC.  
 NOTE: Transponder code will be issued via Charlotte clearance delivery.

**TAKEOFF MINIMUMS**

Rwys 4L, 22R: NA.  
 Rwy 22L: Standard.  
 Rwy 4R: 300-1½ or standard with minimum climb of 276' per NM to 1000.

(NARRATIVE ON FOLLOWING PAGE)

NOTE: Chart not to scale.

**KERMIT THREE DEPARTURE**  
 (KER3.KER) 03JAN19

ALBEMARLE, NORTH CAROLINA  
 STANLY COUNTY (VUJ)

SE-2, 22 FEB 2024 to 21 MAR 2024

SE-2, 22 FEB 2024 to 21 MAR 2024

# KERMIT THREE DEPARTURE



## DEPARTURE ROUTE DESCRIPTION

TAKEOFF RWY 4R: Climb heading 043°, thence. . . .

TAKEOFF RWY 22L: Climb heading 223°, thence. . . .

. . . .on RADAR vectors to intercept filed/assigned transition or enroute fix/navaid.  
Maintain 3000, expect filed altitude/flight level 10 minutes after departure.

- ANDYS TRANSITION (KER3.ANDYS): From over CLT VOR/DME on CLT R-196 to ANDYS.
- DEBIE TRANSITION (KER3.DEBIE): From over CLT VOR/DME on CLT R-255 to DEBIE.
- HAMLN TRANSITION (KER3.HAMLN): From over CLT VOR/DME on CLT R-175 to HAMLN.
- JOTTA TRANSITION (KER3.JOTTA): From over CLT VOR/DME on CLT R-011 to JOTTA.
- LILLS TRANSITION (KER3.LILLS): From over CLT VOR/DME on CLT R-112 to LILLS.
- MERIL TRANSITION (KER3.MERIL): From over CLT VOR/DME on CLT R-076 to MERIL.
- NALEY TRANSITION (KER3.NALEY): From over CLT VOR/DME on CLT R-011 to NALEY.
- NEANO TRANSITION (KER3.NEANO): From over CLT VOR/DME on CLT R-275 to BOBZY and ODF R-070 to NEANO.
- TREAL TRANSITION (KER3.TREAL): From over CLT VOR/DME on CLT R-196 to TREAL.

SE-2, 22 FEB 2024 to 21 MAR 2024

SE-2, 22 FEB 2024 to 21 MAR 2024

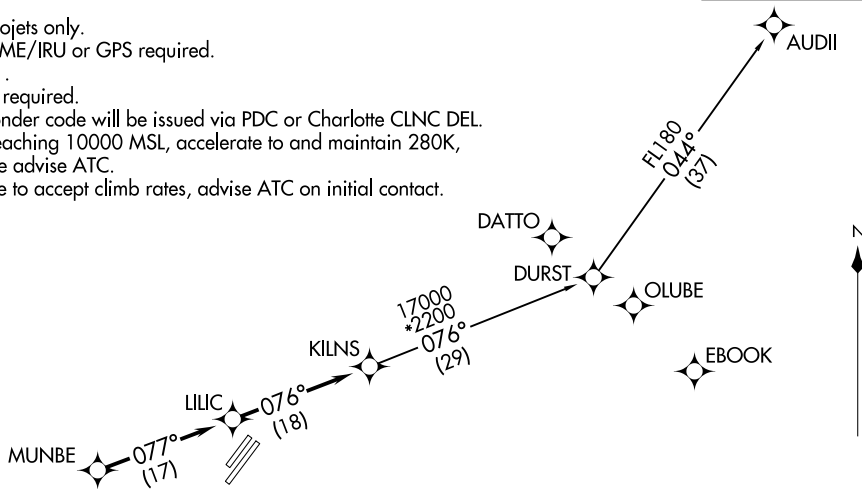


KILNS FOUR DEPARTURE (RNAV)  
(KILNS4,KILNS) 03JAN19

AWOS-3  
128.175  
CLNC DEL  
121.75 254.375  
GND CON  
121.75 254.375  
STANLY COUNTY TOWER ★  
126.275 (CTAF) 291.9  
CHARLOTTE DEP CON  
128.325 307.8

NOTE: For turbojets only.  
NOTE: DME/DME/IRU or GPS required.  
NOTE: RNAV 1.  
NOTE: RADAR required.  
NOTE: Transponder code will be issued via PDC or Charlotte CLNC DEL.  
NOTE: Upon reaching 10000 MSL, accelerate to and maintain 280K, if unable advise ATC.  
NOTE: If unable to accept climb rates, advise ATC on initial contact.

TOP ALTITUDE:  
3000



KILNS FOUR DEPARTURE (RNAV)  
(KILNS4,KILNS) 23110

A4-6707 (FAA)

STANLY COUNTY (VTJ)  
ALBERMARLE, NORTH CAROLINA

NOTE: Chart not to scale.



DEPARTURE ROUTE DESCRIPTION

Climb on heading assigned by ATC, expect RADAR vectors to MUNBE, then on depicted route to KILNS, then on AUDII transition. Maintain 3000. Expect clearance to filed altitude within 10 minutes after departure.

AUDII TRANSITION (KILNS4.AUDII)

TAKEOFF MINIMUMS

Rwys 4L, 22R: NA.  
Rwy 22L: Standard.  
Rwy 4R: 300-1½ or standard with minimum climb of 276' per NM to 1000.

ALBERMARLE, NORTH CAROLINA  
STANLY COUNTY (VTJ)

# KNIGHTS TWO DEPARTURE

AWOS-3  
128.175  
CLNC DEL  
121.75 254.375  
GND CON  
121.75 254.375  
STANLEY COUNTY TOWER★  
126.275 (CTAF) 291.9  
CHARLOTTE DEP CON  
128.325 307.8

### TAKEOFF MINIMUMS

Rwys 4, 22R: NA.

Rwy 22L: Standard.

Rwy 4R: 300-1½ or standard with minimum climb of 276' per NM to 1000.

**TOP ALTITUDE:  
3000**

- NOTE: For propeller aircraft only.
- NOTE: RADAR and DME required.
- NOTE: Turboprops: Operate in a manner that will result in best forward speed and climb rate.
- NOTE: Transponder code will be issued via Charlotte clearance delivery.

CEGAL  
N36°46.19'  
W81°07.41'  
L-26, H-9-12

FLYYN  
N36°06.29'  
W81°03.02'  
L-25, H-9-12

SUGARLOAF MOUNTAIN  
112.2 SUG  
Chan 59

SANDHILLS  
111.8 SDZ  
Chan 55

GIPPR  
N35°12.58'  
W79°59.13'

PEKNN  
N35°12.69'  
W79°52.36'  
L-25-36

BOBZY  
N35°11.13'  
W81°38.05'

NEANO  
N35°04.88'  
W81°59.79'  
L-25

DEBIE  
N34°55.82'  
W81°48.53'

CHARLOTTE  
115.0 CLT  
Chan 97  
N35°11.42'  
W80°57.11'

FOOTHILLS  
113.4 ODF  
Chan 81

WALUT  
N34°40.00'  
W80°50.53'

LILLS  
N34°56.13'  
W79°55.81'  
L-25-35-36

CHESTERFIELD  
114.55 CTF  
Chan 92(Y)

ANDYS  
N34°22.25'  
W81°08.63'  
L-24-25

HAMLN  
N34°21.54'  
W80°46.71'  
H-9-12

FLORENCE  
115.2 FLO  
Chan 99

- ANDYS TRANSITION: Expect vectors to intercept CLT R-196 to ANDYS.
- CEGAL TRANSITION: Expect vectors to intercept CLT R-360 to CEGAL.
- DEBIE TRANSITION: Expect vectors to intercept CLT R-255 to DEBIE.
- FLYYN TRANSITION: Expect vectors to intercept CLT R-360 to FLYYN.
- HAMLN TRANSITION: Expect vectors to intercept CLT R-175 to HAMLN.
- LILLS TRANSITION: Expect vectors to intercept CLT R-112 to LILLS.
- NEANO TRANSITION: Expect vectors to intercept CLT R-275 to BOBZY then ODF R-070 to NEANO.
- PEKNN TRANSITION: Expect vectors to intercept CLT R-093 to GIPPR then SDZ R-272 to PEKNN.

NOTE: Chart not to scale.

(NARRATIVE ON FOLLOWING PAGE)

# KNIGHTS TWO DEPARTURE

SE-2, 22 FEB 2024 to 21 MAR 2024

SE-2, 22 FEB 2024 to 21 MAR 2024

# KNIGHTS TWO DEPARTURE



## DEPARTURE ROUTE DESCRIPTION

TAKEOFF RUNWAY 4R: Climb heading 043°, thence. . . .

TAKEOFF RUNWAY 22L: Climb heading 223°, thence. . . .

. . . .expect RADAR vectors to intercept filed/assigned transition or enroute fix/navaid.  
Maintain 3000, expect filed altitude/flight level 10 minutes after departure.

ANDYS TRANSITION (KNI2.ANDYS): From over CLT VOR/DME on CLT R-196 to ANDYS.

CEGAL TRANSITION (KNI2.CEGAL): From over CLT VOR/DME on CLT R-360 to CEGAL.

DEBIE TRANSITION (KNI2.DEBIE): From over CLT VOR/DME on CLT R-255 to DEBIE.

FLYYN TRANSITION (KNI2.FLYYN): From over CLT VOR/DME on CLT R-360 to FLYYN.

HAMLN TRANSITION (KNI2.HAMLN): From over CLT VOR/DME on CLT R-175 to HAMLN.

LILLS TRANSITION (KNI2.LILLS): From over CLT VOR/DME on CLT R-112 to LILLS.

NEANO TRANSITION (KNI2.NEANO): From over CLT VOR/DME on CLT R-275 to BOBZY,  
then on ODF R-070 to NEANO.

PEKNN TRANSITION (KNI2.PEKNN): From over CLT VOR/DME on CLT R-093 to GIPPR,  
then on SDZ R-272 to PEKNN.

SE-2, 22 FEB 2024 to 21 MAR 2024

SE-2, 22 FEB 2024 to 21 MAR 2024

(KRITR5.KRITR) 23110

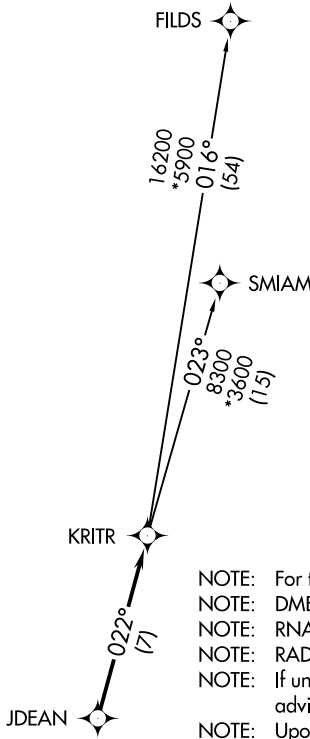
AL-6707 (FAA)

STANLY COUNTY (VUJ)  
ALBEMARLE, NORTH CAROLINA

# KRITR FIVE DEPARTURE (RNAV)

AWOS-3  
128.175  
CLNC DEL  
121.75 254.375  
GND CON  
121.75 254.375  
STANLY COUNTY TOWER ★  
126.275 (CTAF) 291.9  
CHARLOTTE DEP CON  
128.325 307.8

**TOP ALTITUDE:  
3000**



- NOTE: For turbojets only.
- NOTE: DME/DME/IRU or GPS required.
- NOTE: RNAV 1.
- NOTE: RADAR required.
- NOTE: If unable to accept climb rates, advise ATC on initial contact.
- NOTE: Upon reaching 10000 MSL, accelerate to and maintain 280K, if unable advise ATC.

### TAKEOFF MINIMUMS

Rwys 4L, 22R: NA.  
Rwy 22L: Standard.  
Rwy 4R: 300-1½ or standard with minimum climb of 276' per NM to 1000.



NOTE: Chart not to scale.



### DEPARTURE ROUTE DESCRIPTION

Climb on heading assigned by ATC, expect RADAR vectors to JDEAN, then on track 022° to KRITR, then on assigned transition. Maintain 3000, expect filed altitude within 10 minutes after departure.

FILDS TRANSITION (KRITR5.FILDS)  
SMIAM TRANSITION (KRITR5.SMIAM)

KRITR FIVE DEPARTURE (RNAV)

(KRITR5.KRITR) 03JAN19

ALBEMARLE, NORTH CAROLINA  
STANLY COUNTY (VUJ)

SE-2, 22 FEB 2024 to 21 MAR 2024

SE-2, 22 FEB 2024 to 21 MAR 2024

(KWEEN4.KWEEN) 23110

AL-6707 (FAA)

STANLY COUNTY (VUJ)  
ALBEMARLE, NORTH CAROLINA

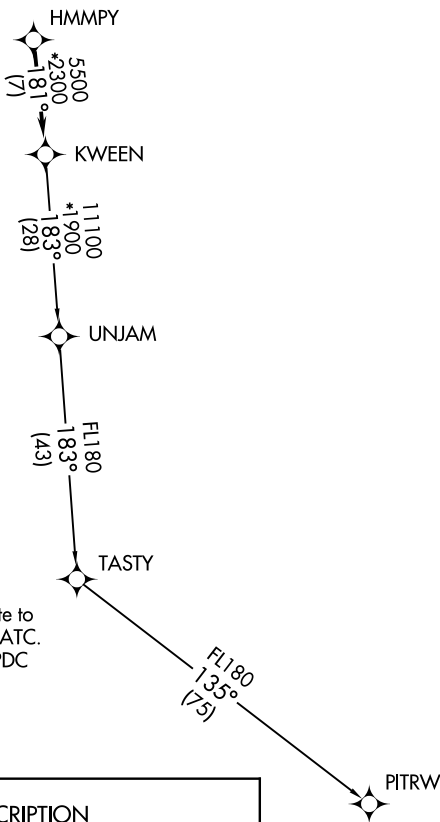
# KWEEN FOUR DEPARTURE (RNAV)

**TOP ALTITUDE:**  
**3000**

AWOS-3  
128.175  
CLNC DEL  
121.75 254.375  
GND CON  
121.75 254.375  
STANLY COUNTY TOWER ★  
126.275 (CTAF) 291.9  
CHARLOTTE DEP CON  
128.325 307.8

### TAKEOFF MINIMUMS

Rwys 4L, 22R: NA.  
Rwy 22L: Standard.  
Rwy 4R: 300-1½ or standard with minimum  
climb of 276' per NM to 1000.



- NOTE: For turbojets only.
- NOTE: DME/DME/IRU or GPS required.
- NOTE: RNAV 1.
- NOTE: RADAR required.
- NOTE: If unable to accept climb rates, advise ATC on initial contact.
- NOTE: Upon reaching 10000 MSL, accelerate to and maintain 280K, if unable advise ATC.
- NOTE: Transponder code will be issued via PDC or Charlotte CLNC DEL.

NOTE: Chart not to scale.

### DEPARTURE ROUTE DESCRIPTION

Climb on heading assigned by ATC, expect RADAR vectors to HMMPY, then on track 181° to KWEEN, then on assigned transition, maintain 3000, expect filed altitude within 10 minutes after departure.

PITRW TRANSITION (KWEEN4.PITRW)  
UNJAM TRANSITION (KWEEN4.UNJAM)

# KWEEN FOUR DEPARTURE (RNAV)

(KWEEN4.KWEEN) 03JAN19

ALBEMARLE, NORTH CAROLINA  
STANLY COUNTY (VUJ)

SE-2, 22 FEB 2024 to 21 MAR 2024

SE-2, 22 FEB 2024 to 21 MAR 2024

(LILLS2.LILLS) 23110

AL-6707 (FAA)

STANLY COUNTY (VUJ)  
ALBEMARLE, NORTH CAROLINA

# LILLS TWO DEPARTURE (RNAV)

**TOP ALTITUDE:**  
**3000**

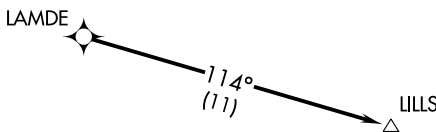
AWOS-3  
128.175  
CLNC DEL  
121.75 254.375  
GND CON  
121.75 254.375  
STANLY COUNTY TOWER ★  
126.275 (CTAF) 291.9  
CHARLOTTE DEP CON  
128.325 307.8

### TAKEOFF MINIMUMS

Rwys 4L, 22R: NA.

Rwy 22L: Standard.

Rwy 4R: 300-1½ or standard with minimum  
climb of 276' per NM to 1000.



- NOTE: For turbojets only.
- NOTE: DME/DME/IRU or GPS required.
- NOTE: RNAV 1.
- NOTE: RADAR required.
- NOTE: Upon reaching 10000 MSL, accelerate to and maintain 280K, if unable advise ATC.
- NOTE: If unable to accept climb rates, advise ATC on initial contact.
- NOTE: Transponder code will be issued via PDC or Charlotte CLNC DEL.

NOTE: Chart not to scale.



### DEPARTURE ROUTE DESCRIPTION

Climb on heading assigned by ATC, expect RADAR vectors to LAMDE, then on depicted route to LILLS. Maintain 3000. Expect clearance to filed altitude within 10 minutes after departure.

# LILLS TWO DEPARTURE (RNAV)

(LILLS2.LILLS) 03JAN19

ALBEMARLE, NORTH CAROLINA  
STANLY COUNTY (VUJ)

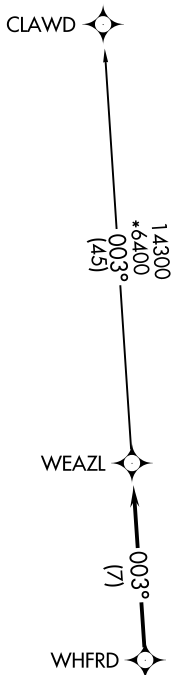
SE-2, 22 FEB 2024 to 21 MAR 2024

SE-2, 22 FEB 2024 to 21 MAR 2024

# WEAZL FOUR DEPARTURE (RNAV)

**TOP ALTITUDE:**  
**3000**

AWOS-3  
128.175  
CLNC DEL  
121.75 254.375  
GND CON  
121.75 254.375  
STANLY COUNTY TOWER ★  
126.275 (CTAF) 291.9  
CHARLOTTE DEP CON  
128.325 307.8



- NOTE: For turbojets only.
- NOTE: DME/DME/IRU or GPS required.
- NOTE: RNAV 1.
- NOTE: RADAR required.
- NOTE: If unable to accept climb rates, advise ATC on initial contact.
- NOTE: Upon reaching 10000 MSL, accelerate to and maintain 280K, if unable advise ATC.

### TAKEOFF MINIMUMS

Rwys 4L, 22R: NA.

Rwy 22L: Standard.

Rwy 4R: 300-1½ or standard with minimum climb of 276' per NM to 1000.

NOTE: Chart not to scale.

### DEPARTURE ROUTE DESCRIPTION

Climb on heading assigned by ATC, expect RADAR vectors to WHFRD, then on track 003° to WEAZL. Then on CLAWD transition. Maintain 3000, expect clearance to filed altitude within 10 minutes after departure.

CLAWD TRANSITION (WEAZL4.CLAWD)