

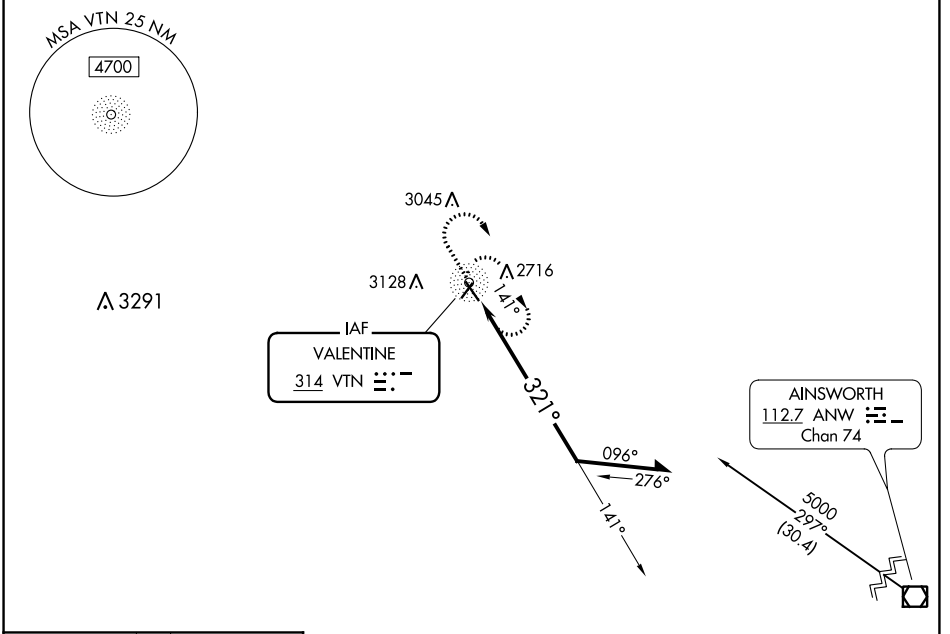
NDB VTN 314	APP CRS 321°	Rwy Idg TDZE Apt Elev	4704 2589 2595
-----------------------	------------------------	-----------------------------	---

NDB RWY 32

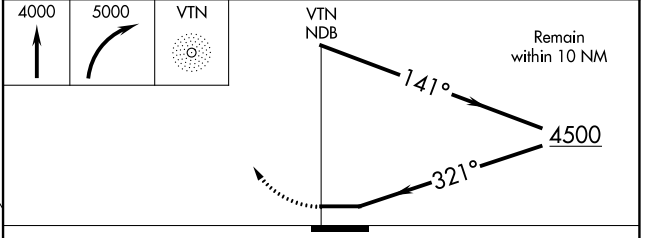
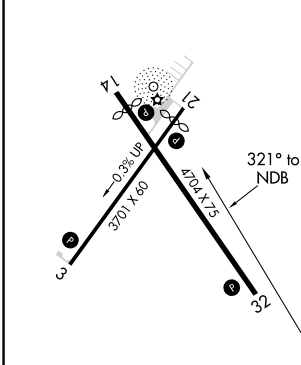
MILLER FLD (VTN)

MISSED APPROACH: Climb to 4000 then climbing right turn to 5000 direct VTN NDB and hold.

ASOS 118.075	DENVER CENTER 127.95 338.2	UNICOM 122.8 (CTAF)
------------------------	--------------------------------------	-------------------------------



ELEV 2595	TDZE 2589
-----------	-----------



CATEGORY	A	B	C	D
S-32	3400-1 811 (900-1)	3400-1¼ 811 (900-1¼)		NA
C CIRCLING	3400-1 805 (900-1)	3560-1½ 965 (1000-1½)		NA

NC-2, 07 OCT 2021 to 04 NOV 2021

NC-2, 07 OCT 2021 to 04 NOV 2021

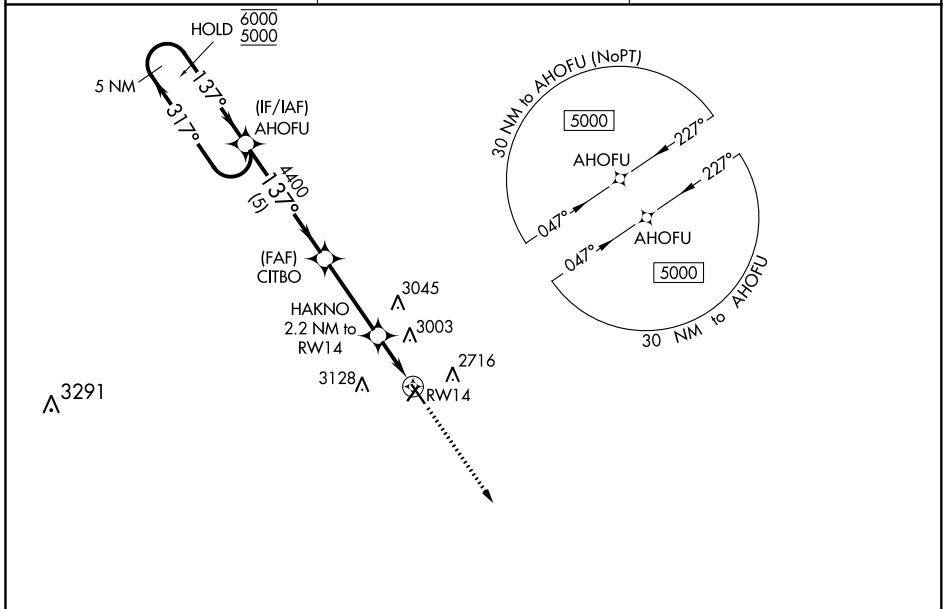
WAAS CH 61037 W14A	APP CRS 137°	Rwy Idg TDZE Apt Elev	4320 2589 2595
--	------------------------	-----------------------------	---

RNAV (GPS) RWY 14

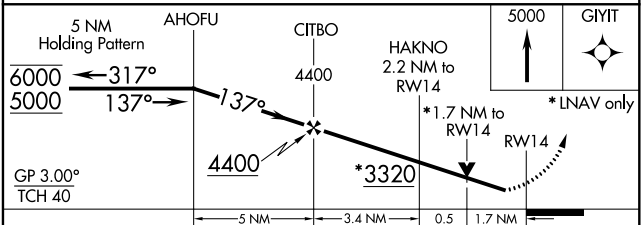
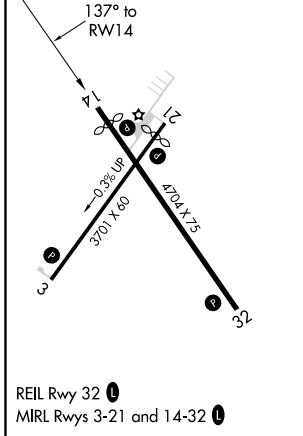
MILLER FLD (VTN)

RNP APCH.	MISSED APPROACH: Climb to 5000 direct GIYIT and hold.
<p>⚠ For uncompensated Baro-VNAV systems, LNAV/VNAV NA below -25°C or above 54°C . Rwy 14 helicopter visibility reduction below ¾ SM NA.</p>	

ASOS 118.075	DENVER CENTER 127.95 338.2	UNICOM 122.8 (CTAF) 0
------------------------	--------------------------------------	---------------------------------



ELEV 2595	TDZE 2589
-----------	-----------



CATEGORY	A	B	C	D
LPV DA	2861-1	272 (300-1)		NA
LNAV/VNAV DA	3239-2¼	650 (700-2¼)		NA
LNAV MDA	3160-1	571 (600-1)		NA
C CIRCLING	3160-1 565 (600-1)	3560-1½ 965 (1000-1½)		NA

NC-2, 07 OCT 2021 to 04 NOV 2021

NC-2, 07 OCT 2021 to 04 NOV 2021

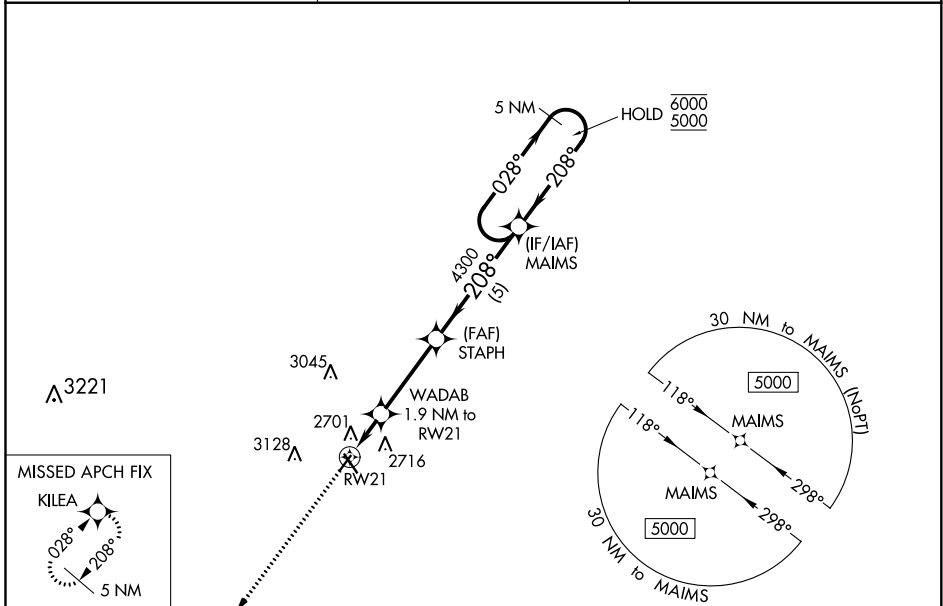
WAAS CH 97437 W21A	APP CRS 208°	Rwy Idg TDZE Apt Elev	3402 2595 2595
--	------------------------	-----------------------------	---

RNAV (GPS) RWY 21

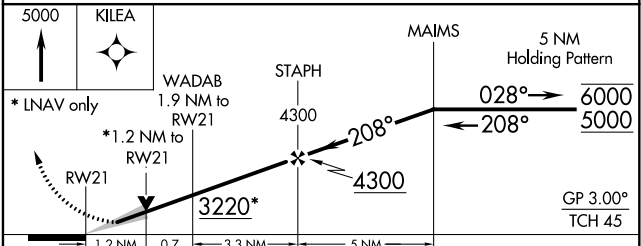
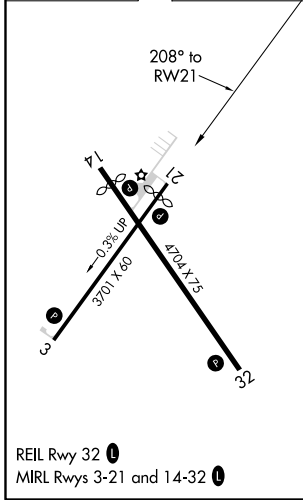
MILLER FLD (VTN)

RNP APCH.		MISSED APPROACH: Climb to 5000 direct KILEA and hold.
<p>⚠ For uncompensated Baro-VNAV systems, LNAV/VNAV NA below -24°C or above 54°C.</p>		

ASOS 118.075	DENVER CENTER 127.95 338.2	UNICOM 122.8 (CTAF) 0
------------------------	--------------------------------------	---------------------------------



ELEV 2595	TDZE 2595
-----------	-----------



CATEGORY	A	B	C	D
LPV DA	2845-1	250 (300-1)		NA
LNAV/VNAV DA	2893-1	298 (300-1)		NA
LNAV MDA	3020-1	425 (500-1)		NA
C CIRCLING	3080-1 485 (500-1)	3560-1½ 965 (1000-1½)		NA

NC-2, 07 OCT 2021 to 04 NOV 2021

NC-2, 07 OCT 2021 to 04 NOV 2021

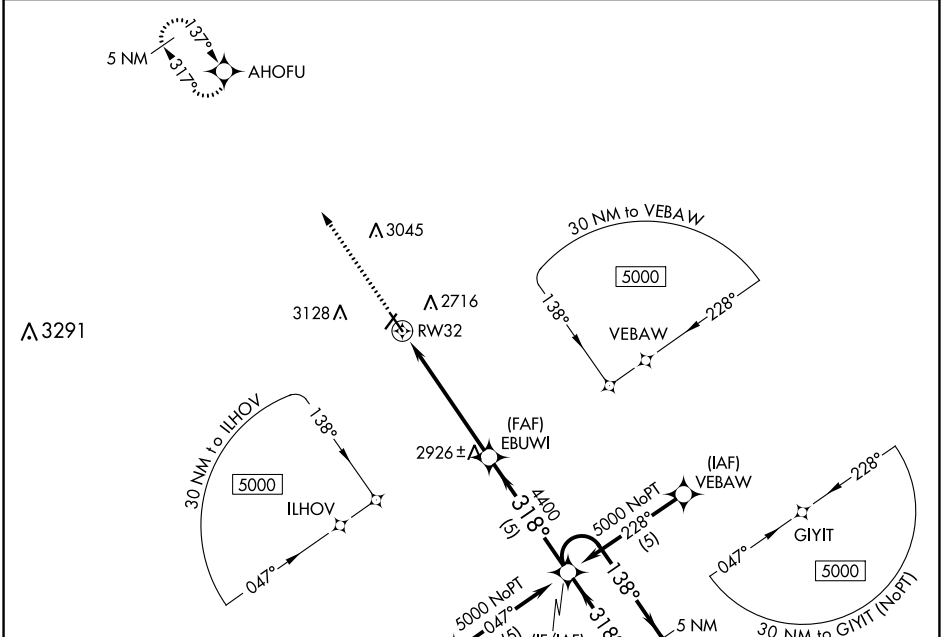
WAAS CH 40010 W32A	APP CRS 318°	Rwy Idg TDZE Apt Elev	4704 2589 2595
---------------------------------	------------------------	-----------------------------	---

RNAV (GPS) RWY 32

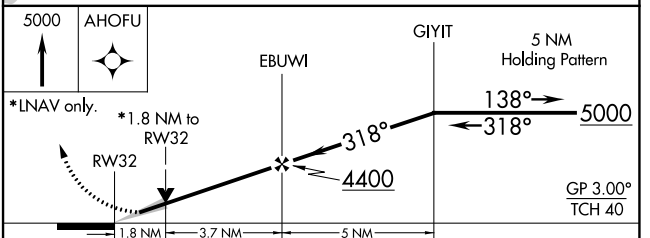
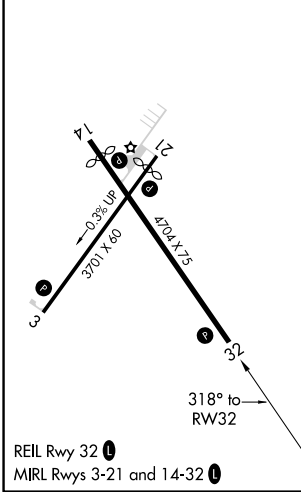
MILLER FLD (VTN)

RNP APCH.	MISSED APPROACH: Climb to 5000 direct AHOFU and hold.
Baro-VNAV NA below -20°C (-4°F).	

ASOS 118.075	DENVER CENTER 127.95 338.2	UNICOM 122.8 (CTAF) 0
------------------------	--------------------------------------	---------------------------------



ELEV 2595	TDZE 2589
-----------	-----------



CATEGORY	A	B	C	D
LPV DA	2841-1	252 (300-1)		NA
LNAV/VNAV DA	2961-1¼	372 (400-1¼)		NA
LNAV MDA	3180-1	591 (600-1)		NA
CIRCLING	3180-1¼ 585 (600-1¼)	3560-1½ 965 (1000-1½)		NA

NC-2, 07 OCT 2021 to 04 NOV 2021

NC-2, 07 OCT 2021 to 04 NOV 2021