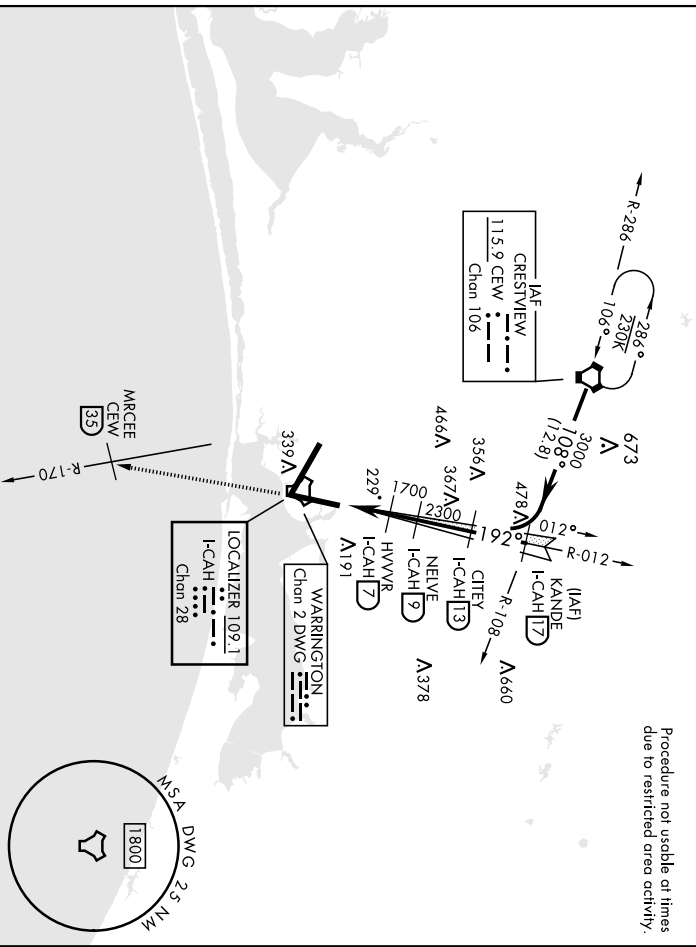


# ILS W or LOC W RWY 20

LOC/DME I-CAH Chn 28	APCH CRS <b>192°</b>	Rwy Idg TDZE Aspl Elev	<b>10,001</b> <b>63</b> <b>84</b>	AL-436 [USAF]	EGLN AFB/DESTIN-FT WALTON BEACH (KVPS)
DME: RADAR required for LOC approach.				ATIS-F-1	MISSED APPROACH: Climb straight ahead to 3000 to CEW R-170/35 DME (MRCEE), then as directed by ATIS.
* When ATIS inop, increase RVR to 40 and vis to 3/4 mile. * When ATIS inop, increase CAT A3 RVR to 55 and vis to 1 mile. * * CAT CDE RVR to 60 and vis to 1 1/8 miles.				TOWER	GND CON
ATIS *	APP CON	<b>125.1</b> <b>281.45</b> <b>271° - 089°</b>	<b>118.2</b> <b>353.65</b>	<b>121.8</b> <b>335.8</b>	<b>127.7</b> <b>377.2</b>
<b>134.625</b> <b>273.5</b>	<b>132.1</b> <b>360.6</b>	<b>090° - 270°</b>			



Procedure not usable at times due to restricted area activity.

EMERG SAFE ALT 100 NM 3600

ELEV 84	TDZE 63	3000				
	1192°					
HIRL all rwys						
† Rwy 20 opht lght 1500' nonstandard.						
LOC FAF to MAP 4.7 NM						
Knots	40	90	120	150	180	
Min:Sec	4:42	3:08	2:21	1:53	1:34	
CATEGORY			A	B	C	D
S-ILS 19 *			260/224		200	(200-1/2)
S-LOC 19 **			480/24	420 (400-1/2)	480/40	420 (400-3/4)
CIRCLING			660-1	576 (600-1)	760-2	760-2 1/4
					676 (700-2)	676 (700-2 1/4)
					676 (700-2 1/4)	676 (700-2 1/4)

VALPARAISO, FLORIDA  
Amdt 5 03NOV22  
30°29'N-86°32'W  
EGLIN AFB/DESTIN-FT WALTON BEACH (KVPS)  
ILS W or LOC W RWY 20







VALPARAISO DESTIN FT WALTON BEACH, FLORIDA

# RNAV (GPS) Z RWY 12

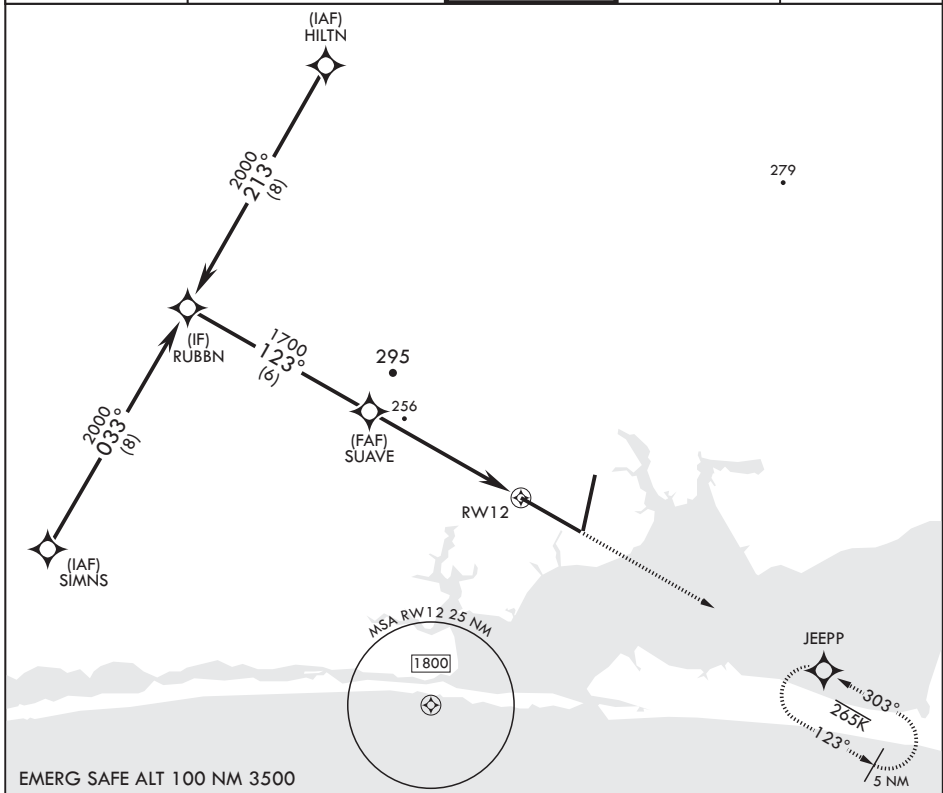
AL-436 (USAF)

EGLIN AFB DESTIN FORT WALTON BEACH (KVPS)

APCH CRS	Rwy Idg	11,987
123°	TDZE	84
	Arprt Elev	84

RNP APCH MISSED APPROACH: Climb straight ahead to 1600 to JEEPP and hold.

ATIS★ 134.625 273.5	APP CON/DEP CON 125.1 281.45 271°-089° 132.1 360.6 090°-270°	TOWER 118.2 353.65	GND CON 121.8 335.8	CLNC DEL 127.7 377.2
------------------------	--	-----------------------	------------------------	-------------------------



EMERG SAFE ALT 100 NM 3500

RUBBN	2000	123°	SUAVE	1700	1.2 NM to RWY 12	RWY 12	ELEV 84	TDZE 84
	2.95° ≥ TCH 50							
CATEGORY	A	B	C	D	E			
LNAV MDA	520/55	436 (500-1)	520-1¼	436	(500-1¼)			
CIRCLING	580-1	496 (500-1)	680-1½ 596 (600-1½)	680-2	596 (600-2)			

HIRL all Rwy  
† Rwy 20 apch lgt 1500' nonstandard.

SE-3, 22 FEB 2024 to 21 MAR 2024

SE-3, 22 FEB 2024 to 21 MAR 2024

VALPARAISO DESTIN FT WALTON BEACH, FLORIDA

EGLIN AFB DESTIN FORT WALTON BEACH (KVPS)

Orig 14JUL22

30°29'N - 86°32'W

# RNAV (GPS) Z RWY 12

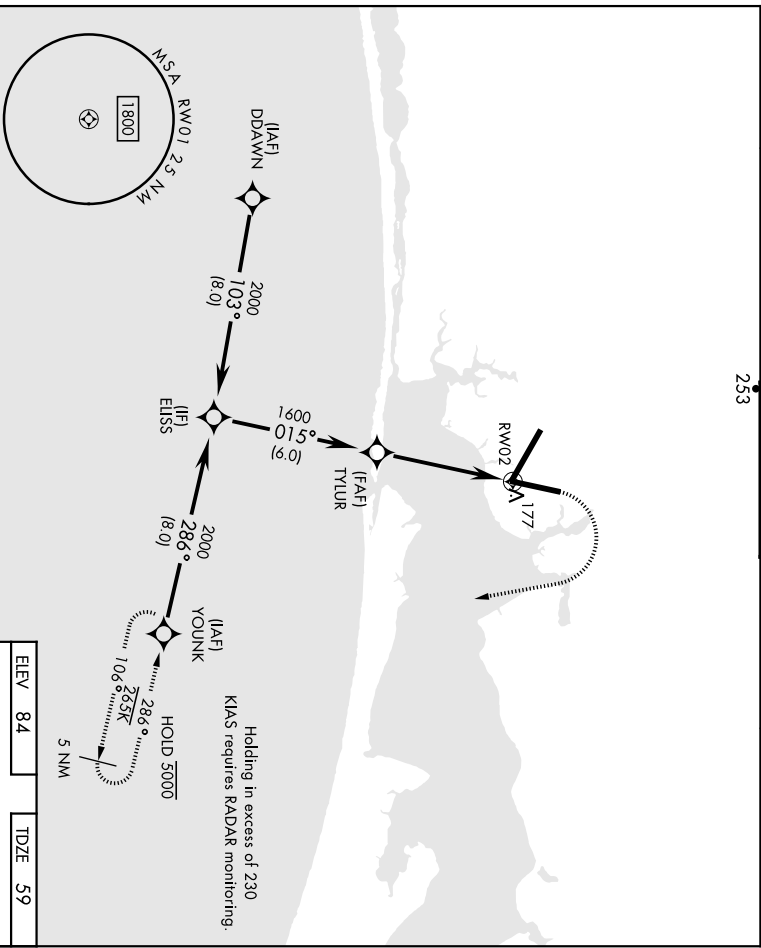
VALPARAISO, FLORIDA

# RNAV (GPS) Z RWY 2

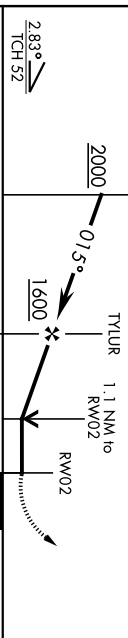
AL436 [USAF]

EGLIN AFB/DESTIN-FT WALTON BEACH (KVPS)

RNP APCH	Rwy Idg <b>10.001</b>	TOWER	ALSF-1 	MISSED APPROACH: Climb to 600, then descending right turn to 2000 direct YOUNK and hold.
ARCH CRS <b>015°</b>	TDZE Appr Elev <b>59</b> Apl Elev <b>84</b>	<b>118.2 353.65</b>	GND CON <b>121.8 335.8</b>	CLNC DEL <b>127.7 377.2</b>
* When ALS inop, increase CAT AB RVR to 55 and vis to 1 mile, CAT CDE RVR TO 60, vis to 1 1/2 miles.				
AIIS *	APP CON <b>125.1 281.45 271° - 089°</b> <b>132.1 360.6 090° - 270°</b>			
<b>134.625 273.5</b>		253		

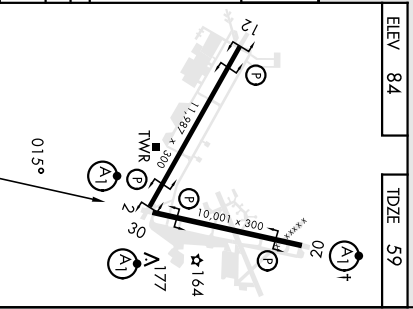


EMERG SAFE ALT 100 NM 3500



CATEGORY	A	B	C	D	E
LNAV MDA *	460/40 401 (400-34)				

CIRCLING	580-1	496 (500-1)	680-1 1/2 596 (600-1 1/2)	680-2	596 (600-2)
----------	-------	-------------	------------------------------	-------	-------------



ELEV 84	TDZE 59
---------	---------

Holding in excess of 230  
KIAS requires RADAR monitoring.

HRL all rwy's  
† Rwy 20 opch lgt 1500' nonstandard.

VALPARAISO, FLORIDA

30°29'N-86°32'W

EGLIN AFB/DESTIN-FT WALTON BEACH (KVPS)

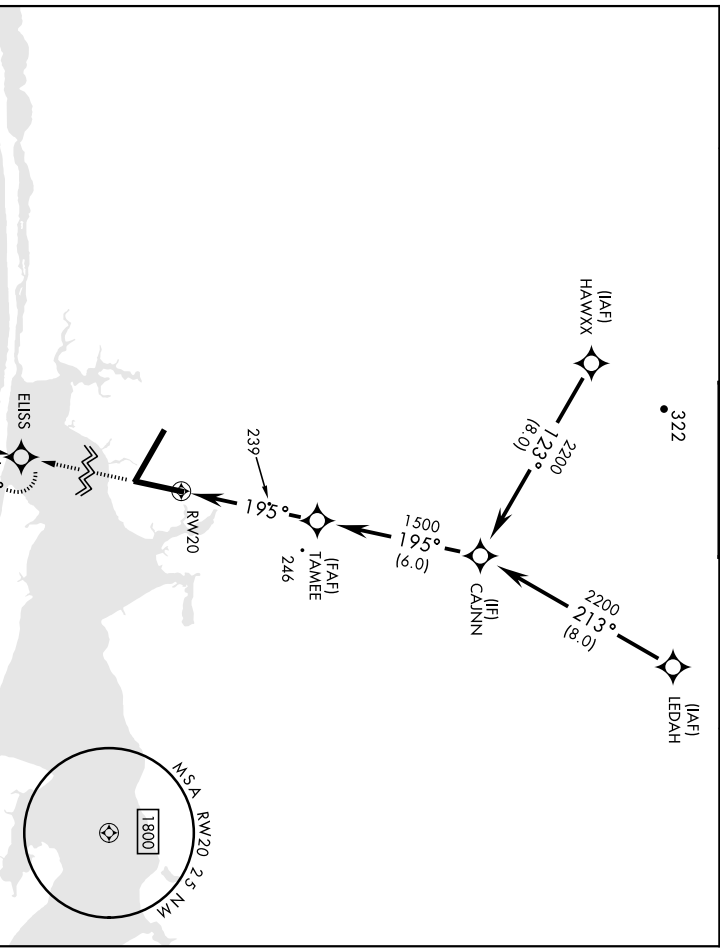
Orig 15JUN23

# RNAV (GPS) Z RWY 2

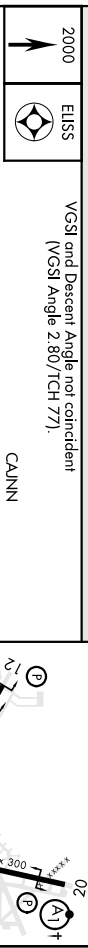
# RNAV (GPS) Z RWY 20

AL436 [USAF] EGLIN AFB/DESTIN-FT WALTON BEACH (KVPS)

ARCH CRS <b>195°</b>	Rwy Ldg TDZE Arpt Elev <b>63</b> <b>84</b>	APP CON <b>125-1 281.45 271°-089°</b> <b>132-1 360.6 090°-270°</b>	TOWER <b>118.2 353.65</b>	GND CON <b>121.8 335.8</b>	CLNC DEL <b>127.7 377.2</b>
RNP APCH		* When ALS inop, increase CAT AB RVR to 55 and vis to 1 mile, CAT CDE vis to 1/4 miles.			
A1		MISSED APPROACH: Climb straight ahead to 2000 to ELISS and hold.			
A1					



EMERG SAFE ALT 100 NM 3500	ELEV <b>84</b>	TDZE <b>63</b>
----------------------------	-------------------	-------------------



2000	ELISS	VASI and Descent Angle not coincident (VASI Angle 2.80°/TCH 771).				
TAMEE						
CAJINN						
TCH 67						
2.59°						
CATEGORY	A	B	C	D	E	
LNAV MDA *	500/24	437 (500-1/2)	500/40	437 (500-3/4)		
CIRCLING	580-1	496 (500-1)	680-1 1/2	680-2	596 (600-2)	

VALPARAISO, FLORIDA	30°29'N-86°32'W	EGLIN AFB/DESTIN-FT WALTON BEACH (KVPS)
HRL all rwy's † Rwy 20 opch lgt 1500' nonstandard.		

Orig 15JUN23  
**RNAV (GPS) Z RWY 20**

VALPARAISO DESTIN FT WALTON BEACH, FLORIDA

# RNAV (GPS) Z RWY 30

APCH CRS	Rwy Idg	11,987
303°	TDZE	69
	Arpt Elev	84

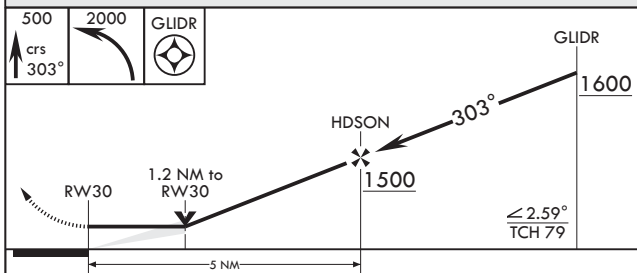
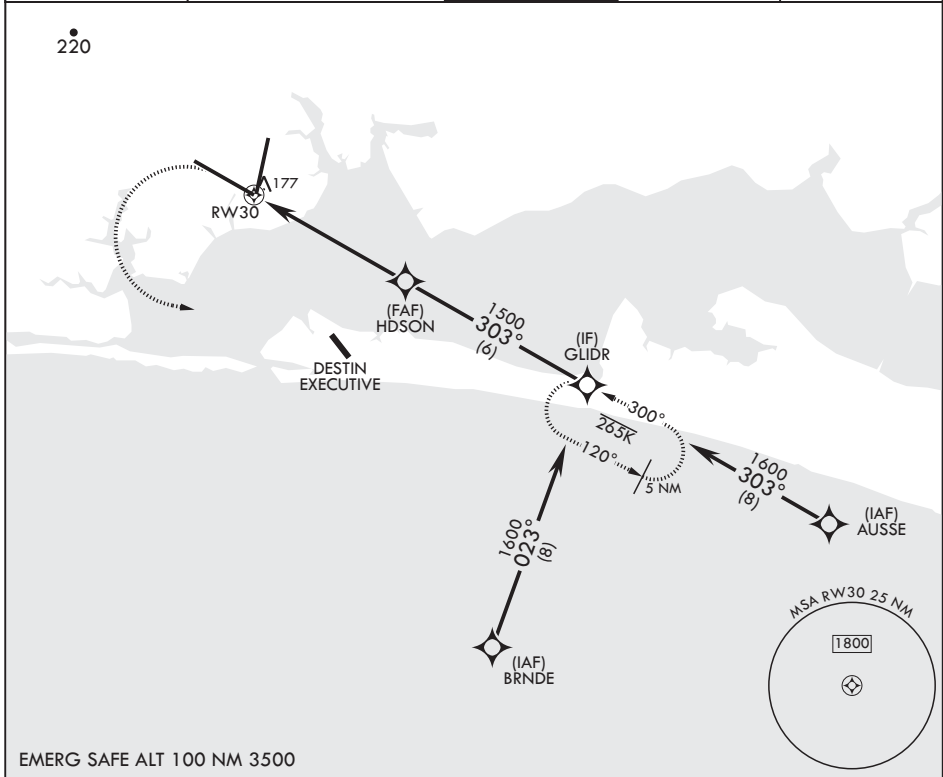
AL-436 (USAF)

EGLIN AFB DESTIN FORT WALTON BEACH (KVPS)

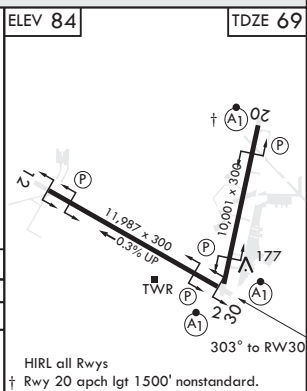
RNP APCH	ALS-1
* When ALS inop, increase RVR to 55, vis to 1 mile.	

MISSED APPROACH: Climb to 500 then climbing left turn to 2000 direct GLIDR and hold.

ATIS★ 134.625 273.5	APP CON/DEP CON 125.1 281.45 271°-089° 132.1 360.6 090°-270°	TOWER 118.2 353.65	GND CON 121.8 335.8	CLNC DEL 127.7 377.2
------------------------	--	-----------------------	------------------------	-------------------------



CATEGORY	A	B	C	D	E
RNAV MDA*	440/24	371 (400-½)	440/35	371	(400-¾)
CIRCLING	580-1	496 (500-1)	680-1½ 596 (600-1½)	680-2	596 (600-2)



VALPARAISO DESTIN FT WALTON BEACH, FLORIDA

EGLIN AFB DESTIN FORT WALTON BEACH (KVPS)

Orig 14JUL22

30°29'N - 86°32'W

# RNAV (GPS) Z RWY 30

SE-3, 22 FEB 2024 to 21 MAR 2024

SE-3, 22 FEB 2024 to 21 MAR 2024



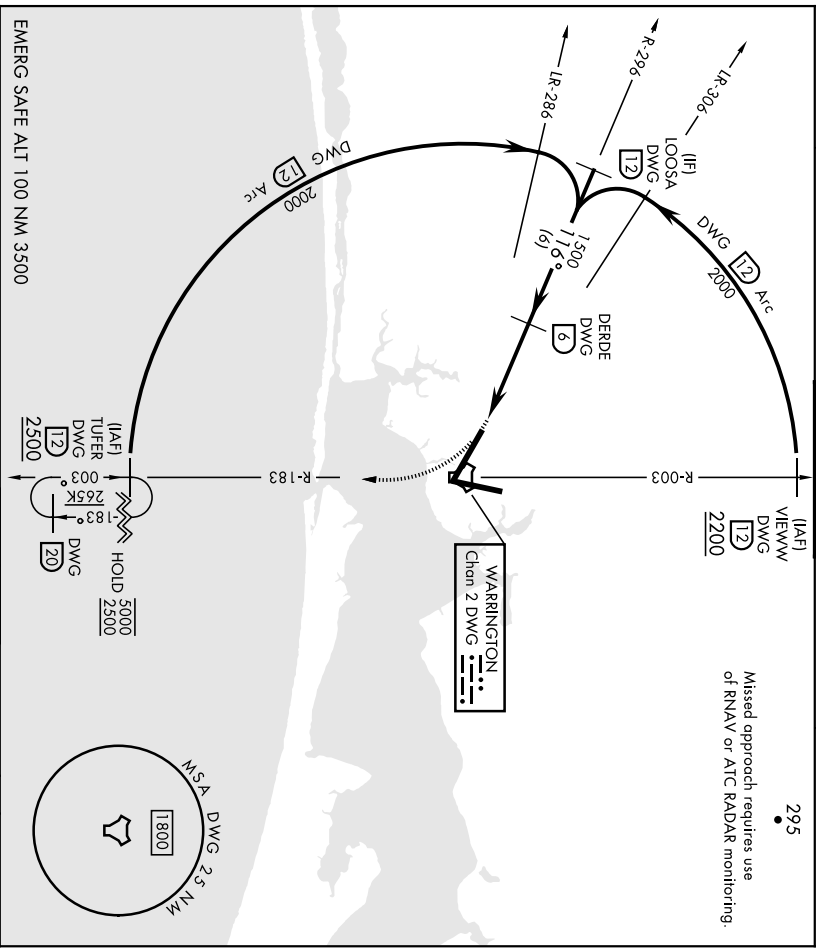
# TACAN Z RWY 12

TACAN DWG	APCH CRS	Rwy Idg	11,987
Chan 2	116°	TDZE	84
		Arpt Elev	84

AL-436 [USAF] EGLIN AFB/DESTIN-FT WALTON BEACH (KVPS)

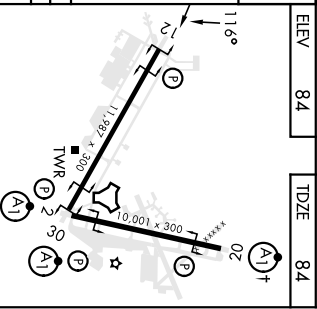
MISSED APPROACH: Climbing right turn to 2200 on DWG R-183 to 12 DME (TUFER) and hold.

ATIS ★	APP CON	TOWER	GND CON	CLNC DEL
	134.625 273.5	125.1 281.45 271° - 089°		
		182.1 360.6	090° - 270°	
				127.7 377.2



EMERG SAFE ALT 100 NM 3500

CATEGORY	A	B	C	D	E
	S-12	540/55	456 (500-1)	540-13%	456 (500-13%)
CIRCLING	580-1	496 (500-1)	680-1 1/2	680-2	596 (600-2)
			596 (600-1/2)		



VALPARAISO, FLORIDA  
 EGLIN AFB/DESTIN-FT WALTON BEACH(KVPS)  
 HIRL all rwy's  
 † Rwy 20 opch lgt 1 500' nonstandard.

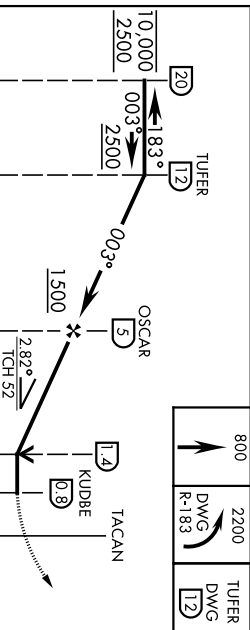
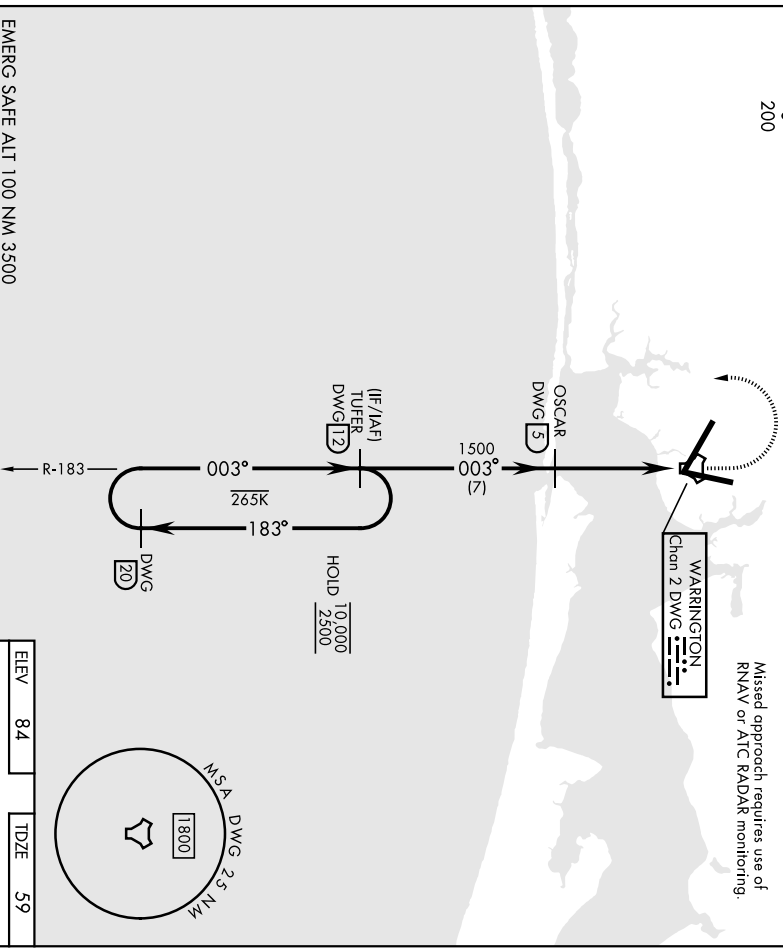
Ordg 29DEC22  
 TACAN Z RWY 12

# TACAN Z RWY 2

TACAN DWG Chan 2	APCH CRS <b>003°</b>	Rwy Idg TDZE Arpt Elev <b>59</b> <b>84</b>	AI-436 [USAFI]	EGLIN AFB/DESTIN-FT WALTON BEACH (KVPS)
* When AIS Inop, increase CAT AB RVR to 55, vis to 1 mile, CAT CDE RVR to 60, vis to 1/8 miles.		APP CON <b>125.1 281.45 271° - 089°</b> <b>132.1 360.6 090° - 270°</b>	TOWER <b>118.2 353.65</b>	MISSED APPROACH: Climb to 800 then climbing left turn to 2200 direct DWG R-183/12 DME (TUFER) and hold.
AIS *		GND CON <b>121.8 335.8</b>	CINC DEL <b>127.7 377.2</b>	

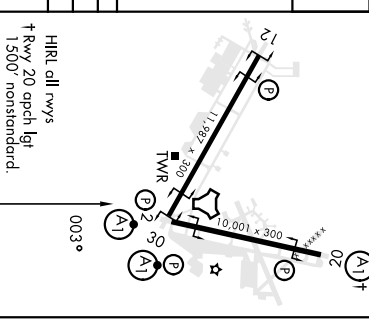
200

Missed approach requires use of RNAV or ATC RADAR monitoring.



CATEGORY	A	B	C	D	E
S-02 *	460/40		401	(400-3/4)	

CIRCLING	580-1	496 (500-1)	680-1 1/2	680-2	596 (600-2)
			596 (600-1 1/2)		



ELEV	84	TDZE	59
------	----	------	----

# TACAN Z RWY 2



