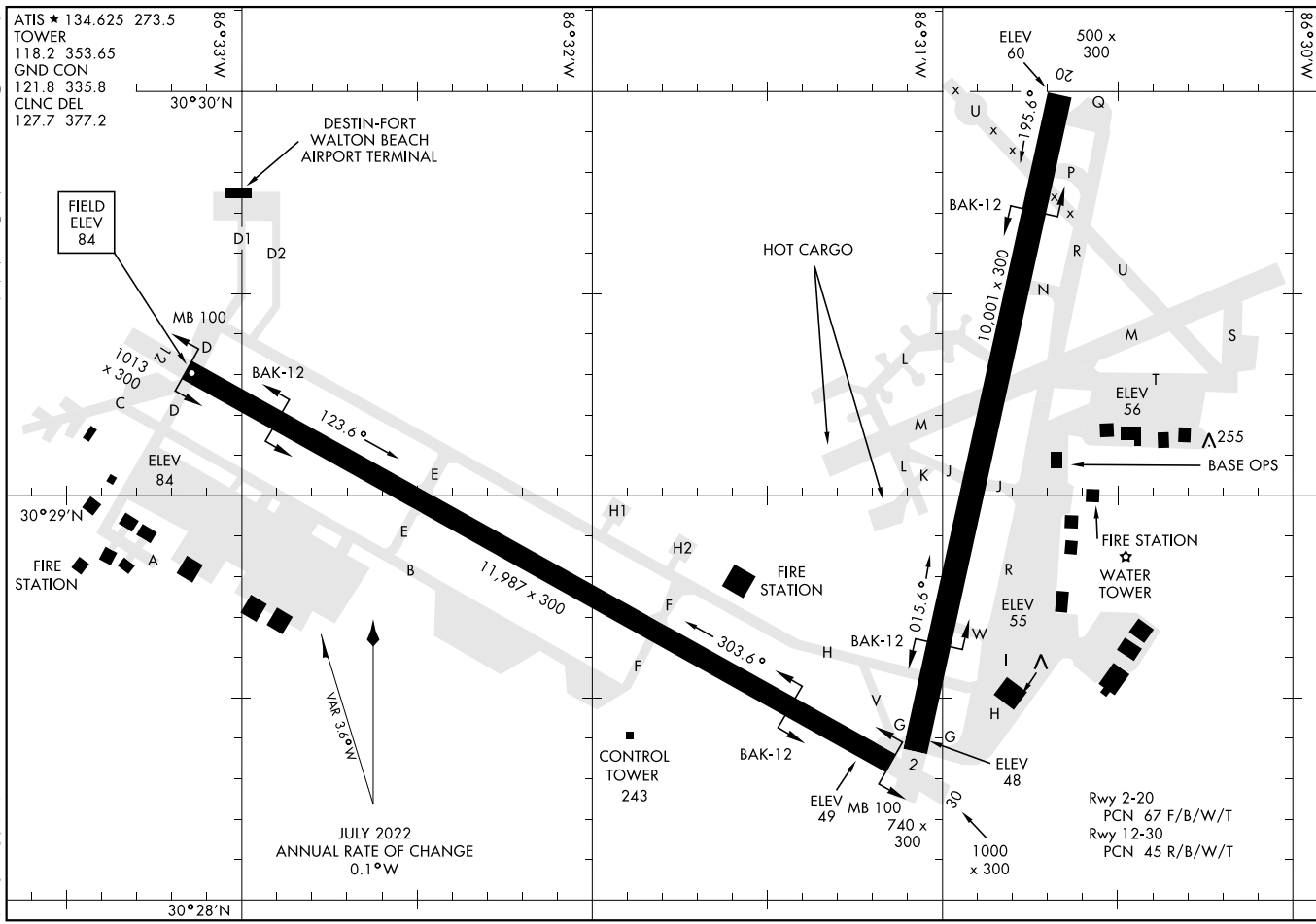


22195  
AIRPORT DIAGRAM

AL-436 [USA]

EGLIN AFB/DESTIN-FT WALTON BEACH (KVPS)  
VALPARAISO, FLORIDA

SE-3, 22 FEB 2024 to 21 MAR 2024

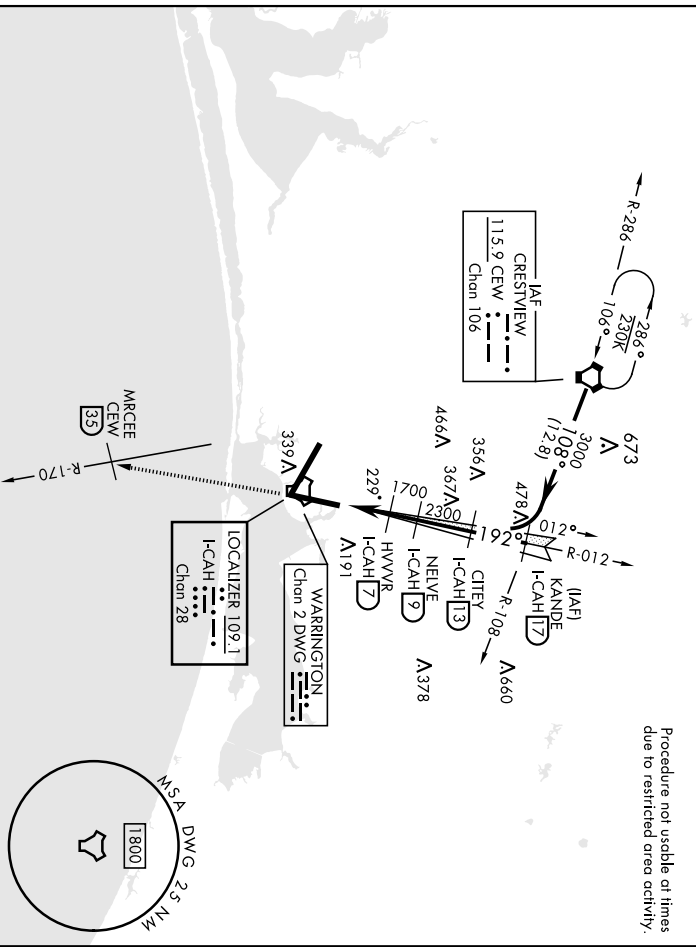


SE-3, 22 FEB 2024 to 21 MAR 2024

AIRPORT DIAGRAM

EGLIN AFB/DESTIN-FT WALTON BEACH (KVPS)  
VALPARAISO, FLORIDA

LOC/DME I-CAH Chn 28	APCH CRS 192°	Rwy Idg TDZE Aspl Elev	10,001 63 84	AL-436 [USAF]	EGLN AFB/DESTIN-FT WALTON BEACH (KVPS)
DME: RADAR required for LOC approach. * When AIS Inop, increase RVR to 40 and vis to 3/4 mile. * When AIS Inop, increase CAT A/R RVR to 55 and vis to 1 mile. ** CAT D/E RVR to 60 and vis to 1 1/8 miles.				MISSED APPROACH: Climb straight ahead to 3000 to CEW R-170/35 DME (MRCEE), then as directed by ATIS.	
ATIS *	APP CON 125.1 281.45 132.1 360.6	271° - 089° 090° - 270°	TOWER 118.2 353.65	GND CON 121.8 335.8	CINC DEL 127.7 377.2



SE-3, 22 FEB 2024 to 21 MAR 2024

SE-3, 22 FEB 2024 to 21 MAR 2024

ELEV 84	TDZE 63	3000
---------	---------	------

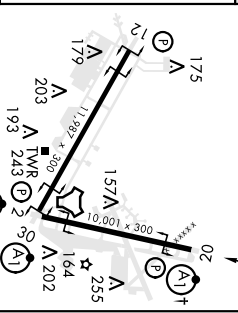
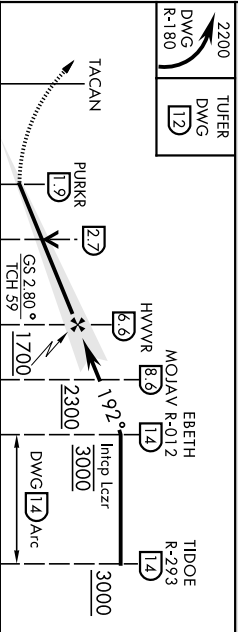
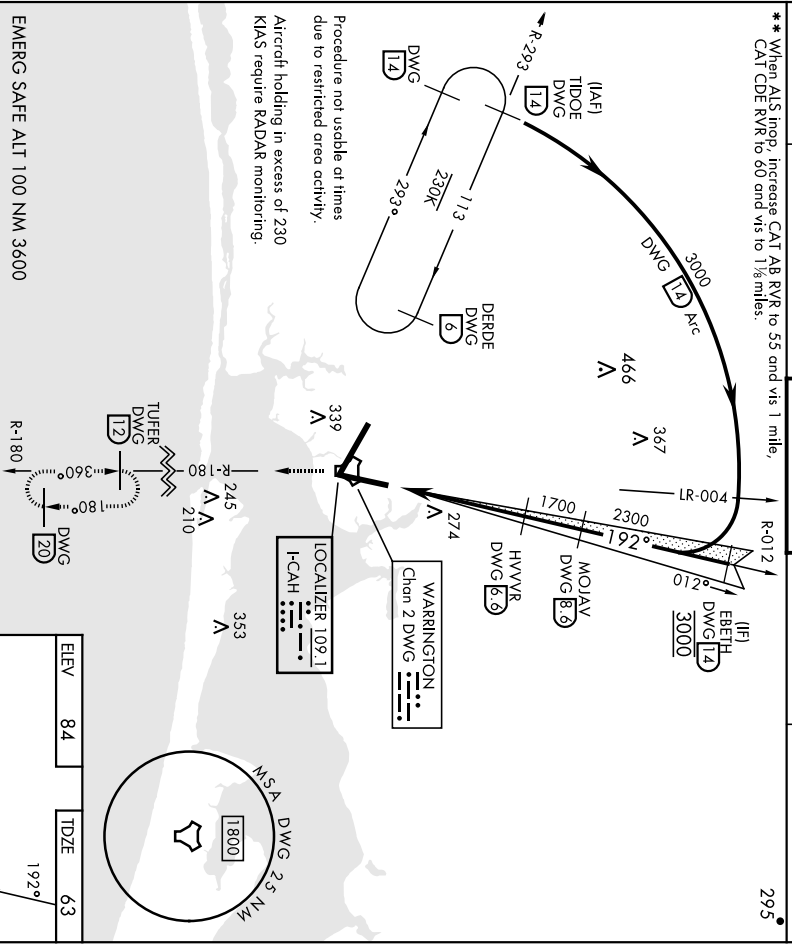
HIRL all rwys † Rwy 20 opht lght 1500' nonstandard.		S-LOC 19 **		S-LOC 19 **	
LOC FAF to MAP 4.7 NM		A		B	
LOC FAF to MAP 4.7 NM		260/224		200	
LOC FAF to MAP 4.7 NM		480/24		480/40	
LOC FAF to MAP 4.7 NM		420 (400+1/2)		420 (400-3/4)	
LOC FAF to MAP 4.7 NM		660-1		760-2	
LOC FAF to MAP 4.7 NM		576 (600-1)		760-2 1/4	
LOC FAF to MAP 4.7 NM		676 (700-2)		760-2 1/2	
LOC FAF to MAP 4.7 NM		676 (700-2 1/4)		760-2 3/4	
LOC FAF to MAP 4.7 NM		676 (700-2 1/2)		760-2 1/2	

VALPARAISO, FLORIDA  
 30°29'N-86°32'W  
 EGLIN AFB/DESTIN-FT WALTON BEACH (KVPS)  
 Amdt 5 03NOV22  
 ILS W or LOC W RWY 20

# ILS X or LOC X RWY 20

LOC I-CAH	APCH CRS	Rwy Idg	<b>10,001</b>	ALS-I	MISSED APPROACH: Climb to 2200 on DWG R-180 to 1/2 DME/TUFER and hold.	CINC DEL
<b>109.1</b>	<b>192°</b>	TDZE Appt Elev	<b>63</b>	<b>A1</b>		
DME or RADAR required for LOC approach.						
* When ALS inop, increase RVR to 40 and vis to 3/4 mile.						

ATIS *	APP CON	TOWER	GND CON	CINC DEL
<b>134.625 273.5</b>	<b>125.1 281.45 271° - 089°</b>	<b>118.2 353.65</b>	<b>121.8 335.8</b>	<b>127.7 377.2</b>
** When ALS inop, increase CAT AB RVR to 55 and vis 1 mile, CAT CDE RVR to 80 and vis to 1 1/8 miles.				



CATEGORY	A		B		C		D		E	
	260/24		200		[200-1/2]		480/40		420 [400-3/4]	
S-ILS 19 *										
S-LOC 19 **	480/24	420 [400-1/2]	200		[200-1/2]		480/40	420 [400-3/4]		
CIRCLING	660-1	576 [600-1]	760-2		760-2 1/4		760-2 1/2		760-2 1/2	
			676 [700-2]	676 [700-2]	676 [700-2 1/4]	676 [700-2 1/4]	676 [700-2 1/4]	676 [700-2 1/4]		
			Min:Sec		4.42		3.08		2.21 1:53 1:34	

VALPARAISO, FLORIDA

EGLN AFB/DESTIN-FT WALTON BEACH (KVP5)

ILS X or LOC X RWY 20

30°29'N-86°32'W

VAALPARAISO, FLORIDA

Amdt 4 03NOV22

# ILS Y or LOC Y RWY 30

LOC I-VPS <b>109.1</b> Chen <b>28</b>	APCH CRS <b>300°</b>	Fix-Idg THR ELEV <b>49</b> <b>84</b>	<b>11,987</b>
---	-------------------------	---	---------------

AI-436 [USAF] EGLIN AFB/DESTIN-FT WALTON BEACH (KVPS)

DME or RADAR required. (for LOC approach)  
\*\* When AIS Inop, increase RVR to 40, vis to ¾ mile.  
\*\* When AIS Inop, increase RVR to 55, vis to 1 mile.

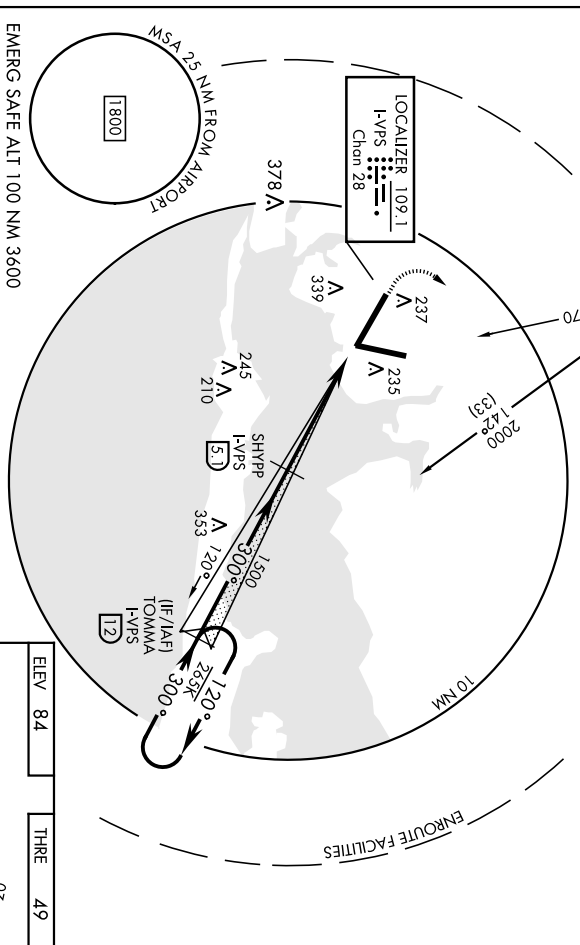
AISF-1 MISSED APPROACH: Climb straight ahead to 600, then  
climbing right turn to 3000, intercept CEW VOR1AC R-170  
to CEW and hold.

AIS *	APP CON	TOWER	GND CON	CINC DEL
<b>134.625 273.5</b>	<b>125.1 281.45 271° - 089°</b>	<b>118.2 353.65</b>	<b>121.8 335.8</b>	<b>127.7 377.2</b>

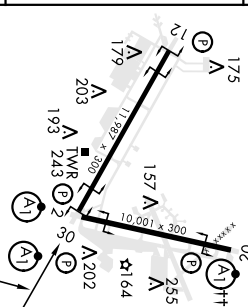
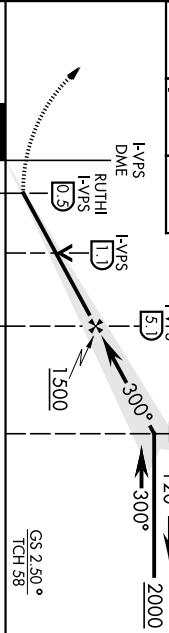
† Missed approach requires use of  
RNAV or ATIS RADAR monitoring.

CRESTVIEW 115.9 CEW Chen 106
------------------------------------

Aircraft holding in excess of 230 KIAS  
require RADAR monitoring.  
Procedure not useable at times  
due to restricted area activity.



EMERG SAFE ALT 100 NM 3600



CATEGORY	A	B	C	D	E
S-ILS 30*	249/24				
S-LOC 30**	420/24	371 (400-½)	420/35	371 (400-¾)	
CIRCLING	660-1	576 (600-1)	760-2	760-2½	760-2½
	676 (700-2)	676 (700-2½)	676 (700-2½)	676 (700-2½)	676 (700-2½)

HRTL all rmys  
†† Rwy 20 opcd lgt 1500' nonstandard.  
FAF to MAP 4.6 NM

	Knots	60	90	120	150	180
	Min:Sec	4:36	3:04	2:18	1:50	1:32

VALPARAISO, FLORIDA  
30°29'N-86°32'W  
EGLIN AFB/DESTIN-FT WALTON BEACH (KVPS)  
Orig 26MAAT16  
**ILS Y or LOC Y RWY 30**

LOC I-VPS <b>109.1</b>	APCH CRS <b>300°</b>	Rwy Idg <b>11,987</b>
DME or RADAR required. (for LOC approach)	THR/E <b>49</b>	THRE Elev <b>84</b>

AL-436 [USAF]

EGLIN AFB/DESTIN-FT WALTON BEACH(KVPS)

ALSF-1  
**(A1)**

MISSED APPROACH: Climb straight ahead to 600 then climbing left turn to 2200 direct TUFER DWG R-180/12 DME and hold.

ATIS \*  
**134.625 273.5**

APP CON  
**125.1 281.45 271°-089°**

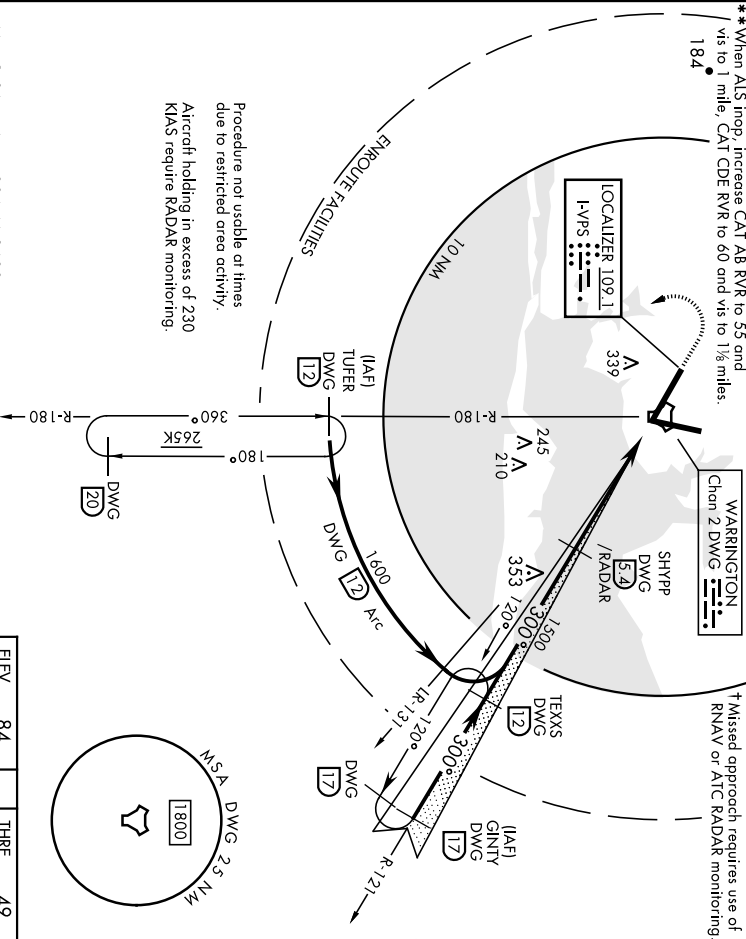
TOWER  
**118.2 353.65**

GND CON  
**121.8 335.8**

CINC DEL  
**127.7 377.2**

\*\*When ALS inop, increase CAT AB RVR to 55 and vis to 1 mile, CAT CDE RVR to 60 and vis to 1 1/2 miles.  
**184°**

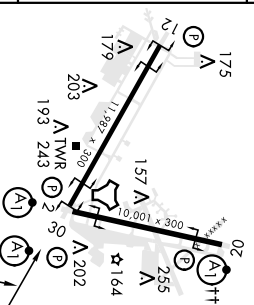
†Missed approach requires use of RNAV or ATIS RADAR monitoring.



Procedure not usable at times due to restricted area activity. Aircraft holding in excess of 230 KIAS require RADAR monitoring.

EMERG SAFE ALT 100 NM 3600

CATEGORY	A	B	C	D	E
	249/24				
S-ILS 30 *	440/24				
S-LOC 30 **	440/24	391 (400-1/2)	440/35 391 (400-3/4)		
CIRCLING	660-1	576 (600-1)	760-2	760-2 1/2	760-2 1/2
			676 (700-2)	676 (700-2 1/2)	676 (700-2 1/2)



HRL all rwy's  
††Rwy 20 opch lgt 1500' nonstandard.

Knots	60	90	120	150	180	200
	FAE to MAP 4.5 NM					
Min:Sec	4:30	3:00	2:15	1:48	1:30	1:21

VALPARAISO DESTIN FT WALTON BEACH, FLORIDA

# RNAV (GPS) Z RWY 12

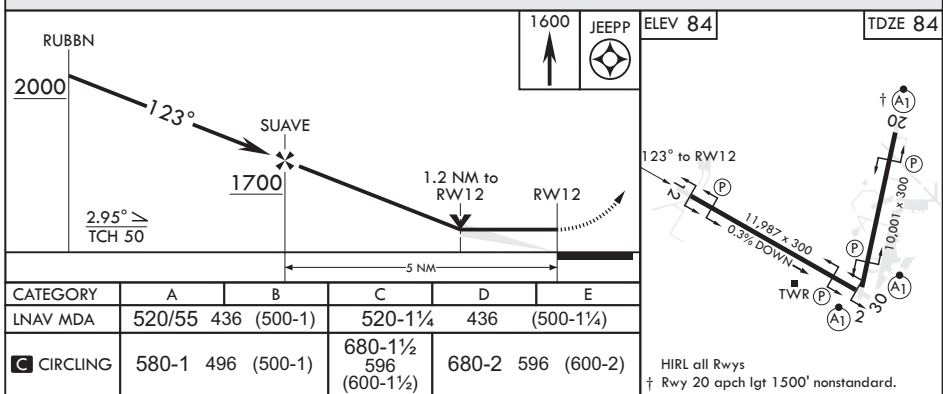
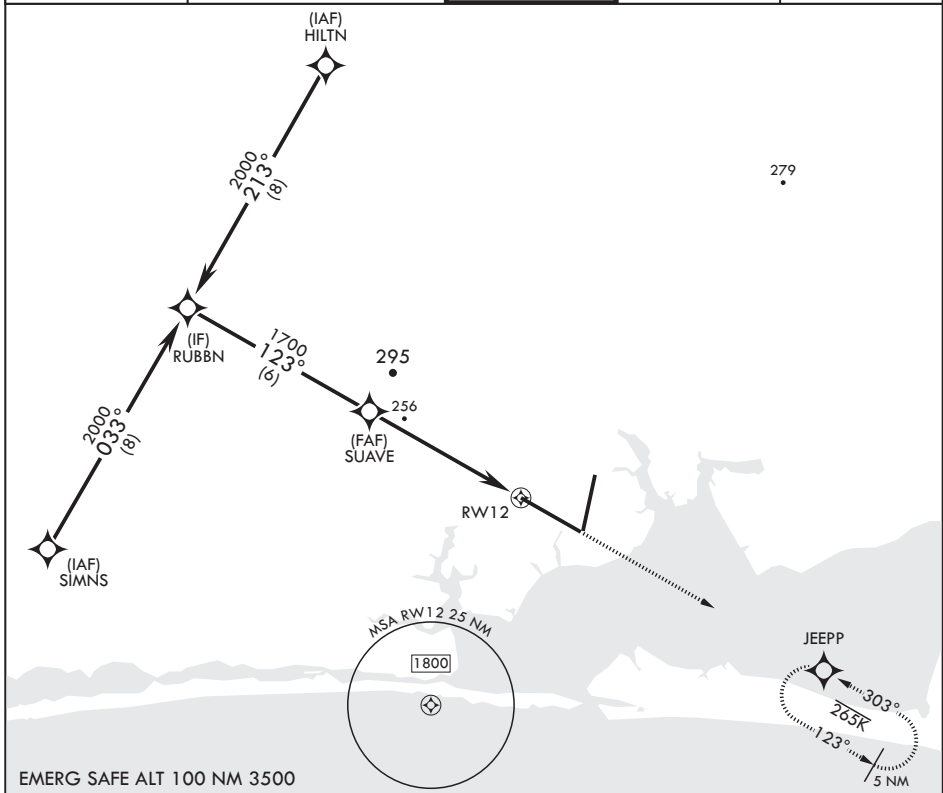
AL-436 (USAF)

EGLIN AFB DESTIN FORT WALTON BEACH (KVPS)

APCH CRS	Rwy Idg	11,987
123°	TDZE	84
	Arprt Elev	84

RNP APCH MISSED APPROACH: Climb straight ahead to 1600 to JEEPP and hold.

ATIS★ 134.625 273.5	APP CON/DEP CON 125.1 281.45 271°-089° 132.1 360.6 090°-270°	TOWER 118.2 353.65	GND CON 121.8 335.8	CLNC DEL 127.7 377.2
------------------------	--	-----------------------	------------------------	-------------------------



SE-3, 22 FEB 2024 to 21 MAR 2024

SE-3, 22 FEB 2024 to 21 MAR 2024

VALPARAISO DESTIN FT WALTON BEACH, FLORIDA

EGLIN AFB DESTIN FORT WALTON BEACH (KVPS)

Orig 14JUL22

30°29'N - 86°32'W

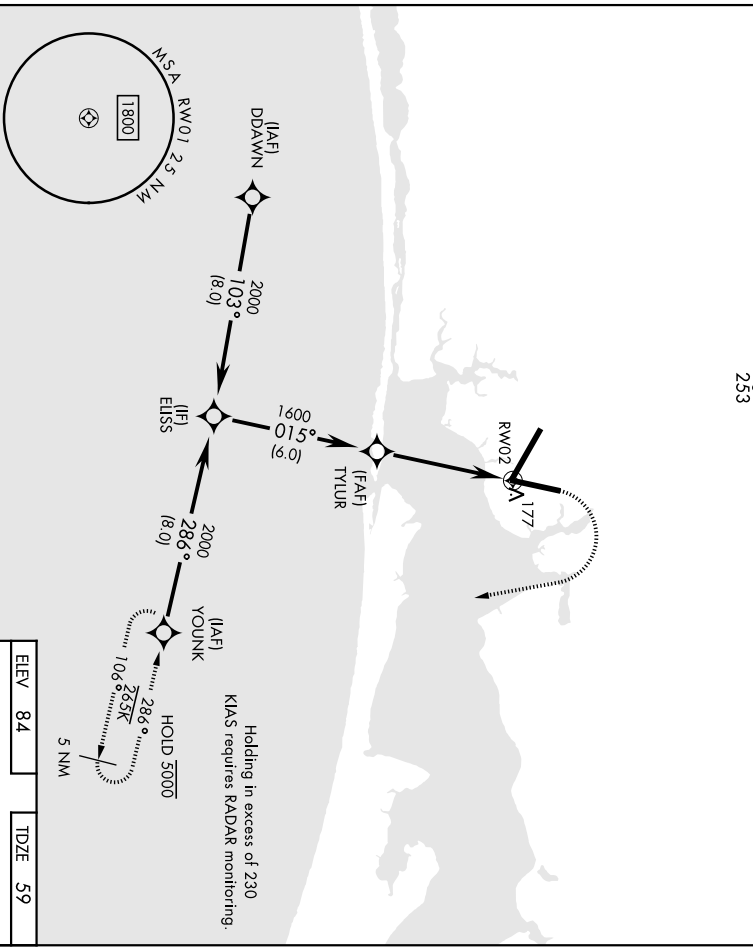
# RNAV (GPS) Z RWY 12

# RNAV (GPS) Z RWY 2

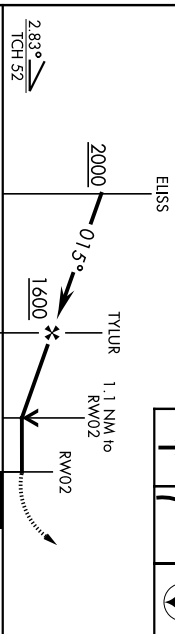
AL436 [USAF]

EGLIN AFB/DESTIN-FT WALTON BEACH (KVPS)

RNP APCH	Rwy Idg <b>10.001</b>	TOWER	ALSF-1 	MISSED APPROACH: Climb to 600, then descending right turn to 2000 direct YOUNK and hold.
ARCH CRS <b>015°</b>	TDZE Appr Elev <b>59</b> Apl Elev <b>84</b>	<b>118.2 353.65</b>	GND CON <b>121.8 335.8</b>	CLNC DEL <b>127.7 377.2</b>
* When ALS inop, increase CAT AB RVR to 55 and vis to 1 mile, CAT CDE RVR TO 60, vis to 1 1/2 miles.				
AIIS *	APP CON <b>125.1 281.45 271° - 089°</b> <b>132.1 360.6 090° - 270°</b>			
<b>134.625 273.5</b>		<b>253</b>		

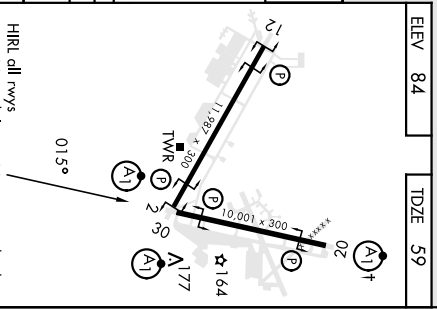


EMERG SAFE ALT 100 NM 3500



CATEGORY	A	B	C	D	E
LNAV MDA *	460/40 401 (400-34)				

CIRCLING	580-1	496 (500-1)	680-1 1/2 596 (600-1 1/2)	680-2	596 (600-2)
----------	-------	-------------	---------------------------	-------	-------------



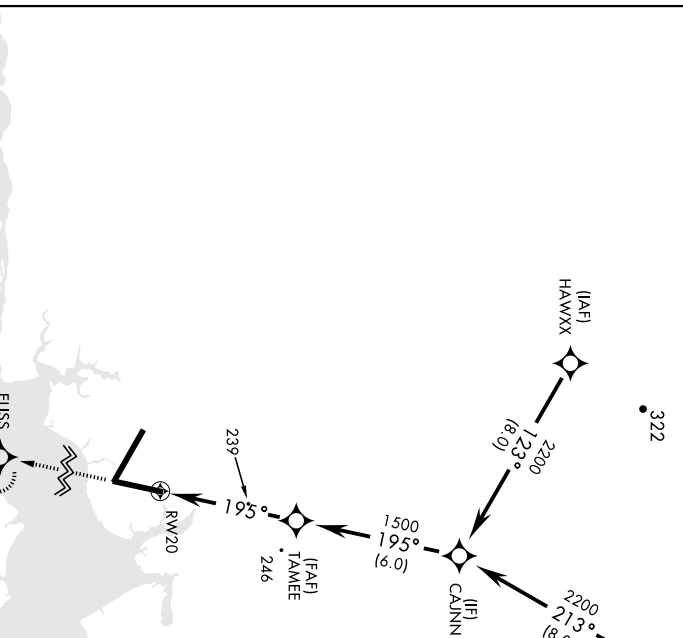
HRL all rwy's  
† Rwy 20 opch lgt 1500' nonstandard.

# RNAV (GPS) Z RWY 2

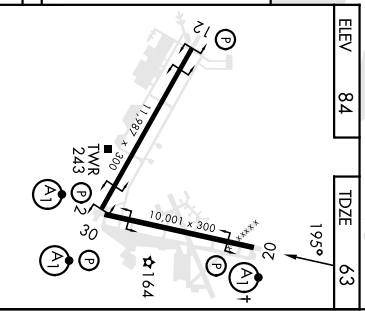
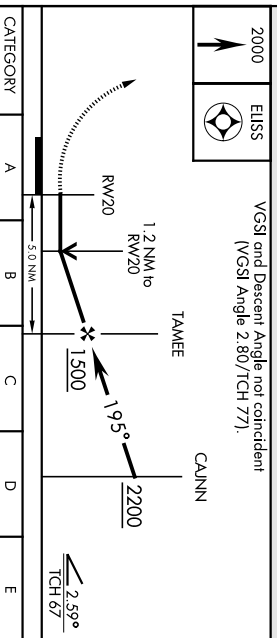
# RNAV (GPS) Z RWY 20

AL436 [USAF] EGLIN AFB/DESTIN-FT WALTON BEACH (KVPS)

RNP APCH	ARCH CRS <b>195°</b>	Rwy Idg TDZE Arpt Elev	<b>10 001</b> <b>63</b> <b>84</b>
* When ALS inop, increase CAT AB RVR to 55 and vis to 1 mile, CAT CDE vis to 1/4 miles.			
ATIS *	APP CON	TOWER	GND CON
<b>134.625 273.5</b>	<b>125-1 281.45 271° - 089°</b>	<b>118.2 353.65</b>	<b>121.8 335.8</b>
	<b>132-1 360.6 090° - 270°</b>		<b>127.7 377.2</b>



ELEV	84	TDZE	63
------	----	------	----



CATEGORY	A	B	C	D	E
LNAV MDA *	500/24	437 (500-1/2)	500/40	437 (500-3/4)	
CIRCLING	580-1	496 (500-1)	680-1 1/2	680-2	596 (600-2)
			596 (600-1 1/2)		

HRL all rwy's  
 † Rwy 20 opch lgt 1500' nonstandard.

# RNAV (GPS) Z RWY 20



VALPARAISO DESTIN FT WALTON BEACH, FLORIDA

# RNAV (GPS) Z RWY 30

APCH CRS	Rwy Idg	11,987
303°	TDZE	69
	Arpt Elev	84

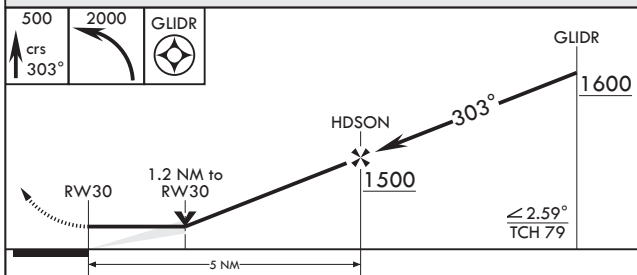
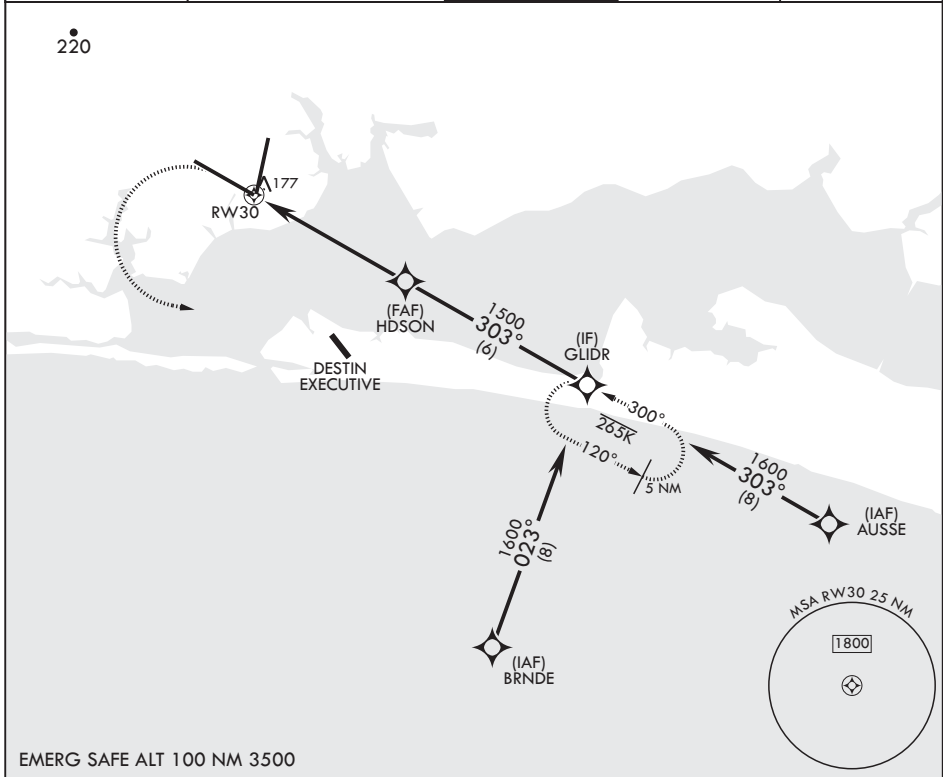
AL-436 (USAF)

EGLIN AFB DESTIN FORT WALTON BEACH (KVPS)

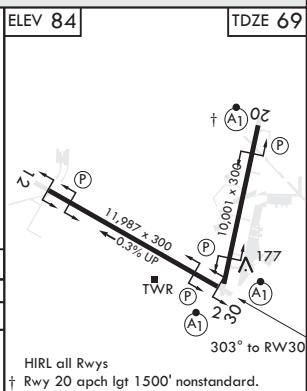
RNP APCH	ALS-F1
* When ALS inop, increase RVR to 55, vis to 1 mile.	

MISSED APPROACH: Climb to 500 then climbing left turn to 2000 direct GLIDR and hold.

ATIS★ 134.625 273.5	APP CON/DEP CON 125.1 281.45 271°-089° 132.1 360.6 090°-270°	TOWER 118.2 353.65	GND CON 121.8 335.8	CLNC DEL 127.7 377.2
------------------------	--	-----------------------	------------------------	-------------------------



CATEGORY	A	B	C	D	E
LNVA MDA*	440/24	371 (400-½)	440/35	371	(400-¾)
CIRCLING	580-1	496 (500-1)	680-1½ 596 (600-1½)	680-2	596 (600-2)



VALPARAISO DESTIN FT WALTON BEACH, FLORIDA

EGLIN AFB DESTIN FORT WALTON BEACH (KVPS)

Orig 14JUL22

30°29'N - 86°32'W

# RNAV (GPS) Z RWY 30

SE-3, 22 FEB 2024 to 21 MAR 2024

SE-3, 22 FEB 2024 to 21 MAR 2024

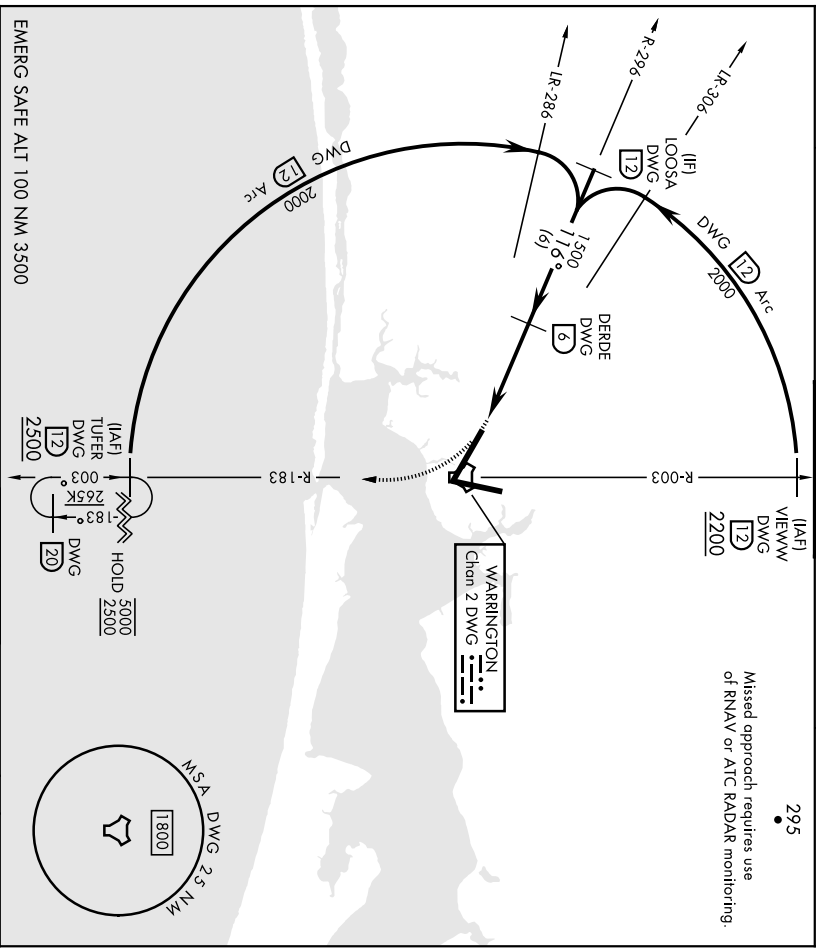
# TACAN Z RWY 12

TACAN DWG Chan 2	APCH CRS 116°	Rwy Idg TDZE Arpt Elev	11,987 84 84
---------------------	------------------	------------------------------	--------------------

AL-436 [USAF] EGLIN AFB/DESTIN-FT WALTON BEACH (KVPS)

MISSED APPROACH: Climbing right turn to 2200 on DWG R-183 to 12 DME (TUFER) and hold.

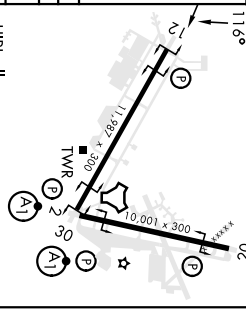
ATIS ★ <b>134.625 273.5</b>	APP CON <b>125.1 281.45 271° - 089°</b>	TOWER <b>118.2 353.65</b>	GND CON <b>121.8 335.8</b>	CLNC DEL <b>127.7 377.2</b>
	<b>182.1 360.6</b> 090° - 270°			



EMERG SAFE ALT 100 NM 3500

2200 DWG R-183	TUFER DWG 12	ELEV	84	TDZE	84
		HOLD 5000 DWG 2500			

LOOSA 12	2000 116°	DERDE 6 3.02° TCH 50	1500 116°	3.8 NM 0.3 NM	2200 DWG R-183	TUFER DWG 12	2500 DWG	5000 HOLD DWG	1800 MSA 2.5 NM



HRTL all rwy's  
 † Rwy 20 opch lgt 1 500' nonstandard.

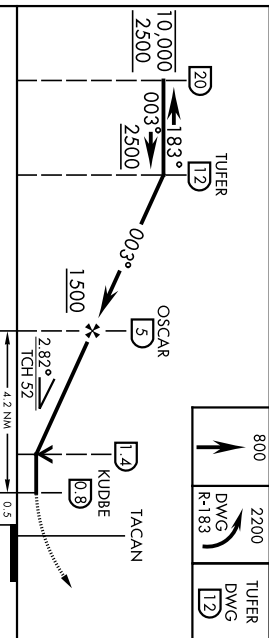
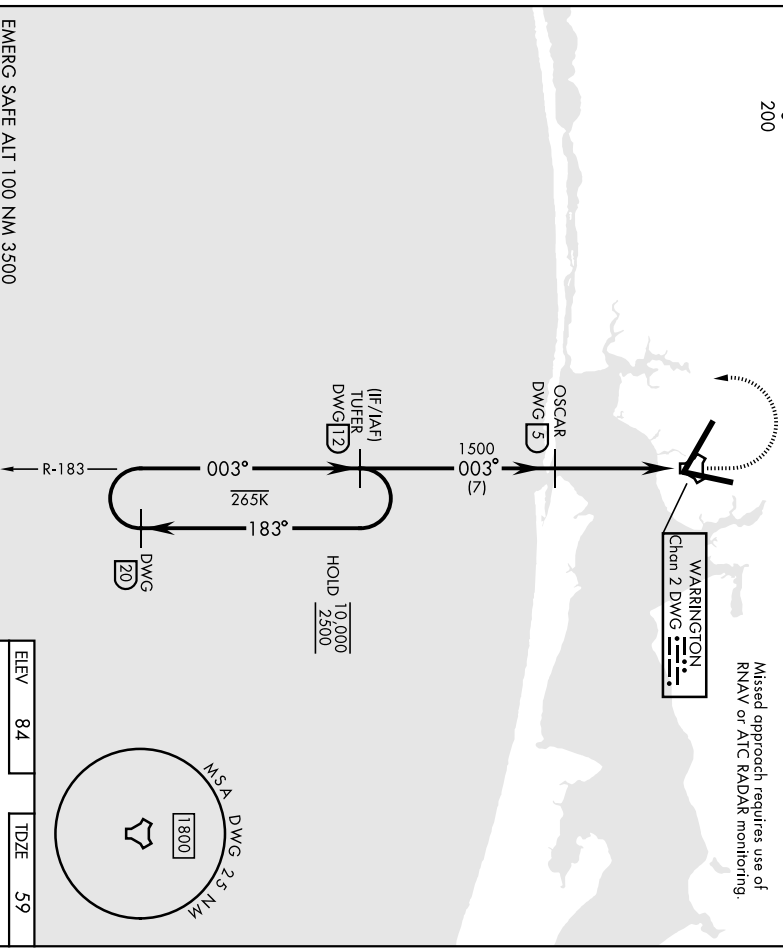
VALPARAISO, FLORIDA  
 Ordg 29DEC22  
 30°29'N-86°32'W EGLIN AFB/DESTIN-FT WALTON BEACH(KVPS)  
**TACAN Z RWY 12**

# TACAN Z RWY 2

TACAN DWG Chan 2	APCH CRS <b>003°</b>	Rwy Idg TDZE Arpt Elev <b>59</b> <b>84</b>	AI-436 [USAFI]	EGLIN AFB/DESTIN-FT WALTON BEACH (KVPS)
* When AIS Inop, increase CAT AB RVR to 55, vis to 1 mile, CAT CDE RVR to 60, vis to 1/8 miles.		APP CON <b>125.1 281.45 271° - 089°</b> <b>132.1 360.6 090° - 270°</b>	TOWER <b>118.2 353.65</b>	MISSED APPROACH: Climb to 800 then climbing left turn to 2200 direct DWG R-183/12 DME (TUFER) and hold.
AIS *		GND CON <b>121.8 335.8</b>	CINC DEL <b>127.7 377.2</b>	

200

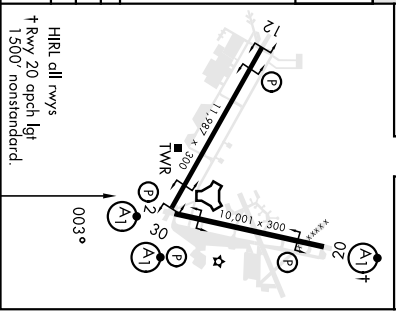
Missed approach requires use of RNAV or ATC RADAR monitoring.



CATEGORY	A	B	C	D	E
S-02 *	460/40		401	(400-3/4)	

CIRCLING	580-1	496 (500-1)	680-1 1/2	680-2	596 (600-2)
			596 (600-1 1/2)		

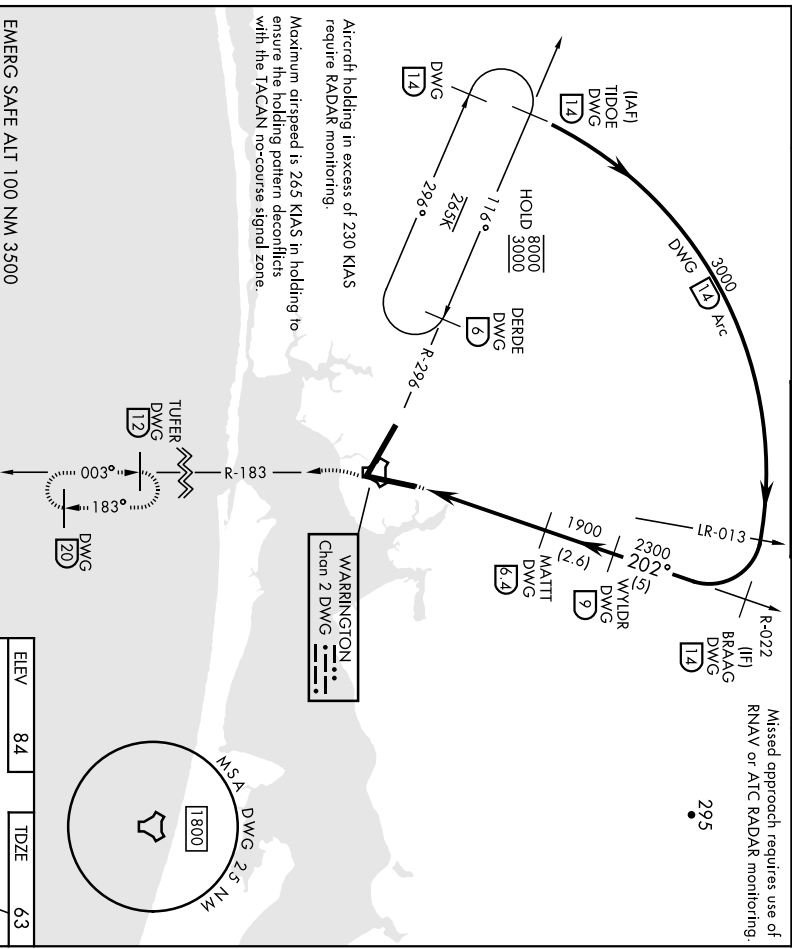
ELEV	84	TDZE	59
------	----	------	----



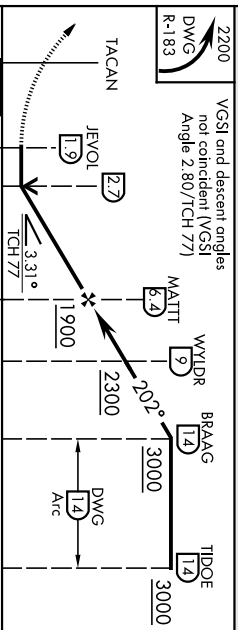
VALPARAISO, FLORIDA  
 30°29'N-86°32'W  
 EGLIN AFB/DESTIN-FT WALTON BEACH (KVPS)  
 Orig 29DEC22  
**TACAN Z RWY 2**

TACAN DWG Chan 2	APCH CRS 202°	Rwy Idg 10,001'	TDZE 63	App Elev 84		ALC-436 [USAF]	EGLIN AFB/DESTIN-FT WALTON BEACH (KVPS)
* When AIS inop, increase CAT AB RVR to 55 and vis to 1 mile. CAT CDE vis to 1 3/8 miles.			AISF-1 A1		MISSED APPROACH: Climbing left turn to 2200 on DWG R-183 to 12 DME/TUFER and hold.		

AIS * 134.625 273.5	APP CON 125.1 281.45 271° - 089° 132.1 360.6 090° - 270°	TOWER 118.2 353.65	GND CON 121.8 335.8	CLNC DEL 127.7 377.2
------------------------	--	-----------------------	------------------------	-------------------------

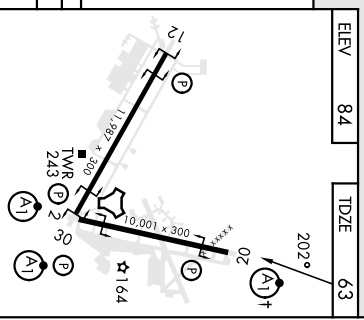


ELEV 84	TDZE 63
---------	---------



CATEGORY	A	B	C	D	E
5-20 *	520/24	457 (500-1/2)	520/45	457 (500-7/8)	

CIRCLING	580-1 496 (500-1)	680-1 1/2 596 (600-1/2)
----------	-------------------	-------------------------



HRL all 'twys  
+ Rwy 20 opch lgt 1,500' nonstandard.

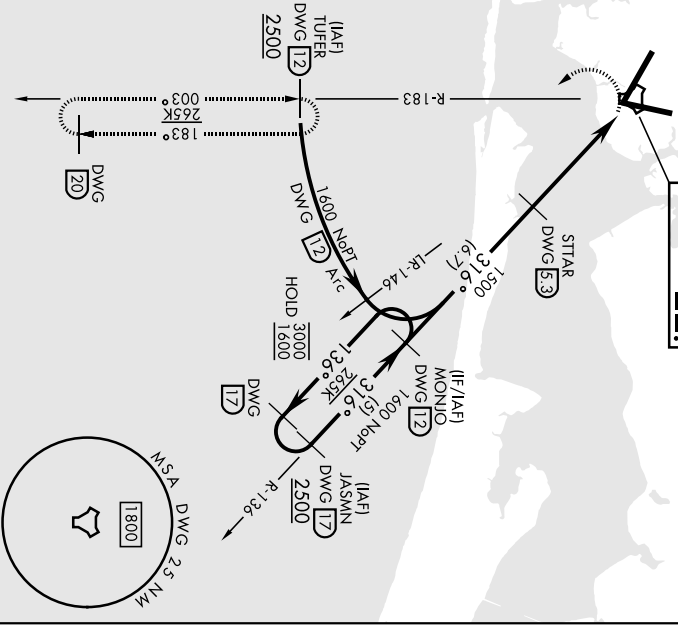
VALPARAISO, FLORIDA  
Orig: 29DEC22  
EGLIN AFB/DESTIN-FT WALTON BEACH (KVPS)  
**TACAN Z RWY 20**

TACAN DWG Chan 2	APCH CRS 316°	Rwy Idg 11,987	AL-436 [USAF]	EGLIN AFB/DESTIN-FT WALTON BEACH (KVPS)
		TDZE 69	AISF-1	MISSED APPROACH: Climbing left turn to 2200 direct DWG R-183/12 DWE (TUFR) and hold.
		App Elev 84	TOWER	
* When ALS inop, increase CAT AB RVR to 55 vis to 1 mile; CAT CDE vis to 1¼ miles.			GND CON	
AIIS *	APP CON			CINC DEL
134.625 273.5	125.1 281.45 271° - 089°		121.8 335.8	127.7 377.2
	132.1 360.6 090° - 270°			

Missed approach requires use of RNAV or ATC RADAR monitoring.

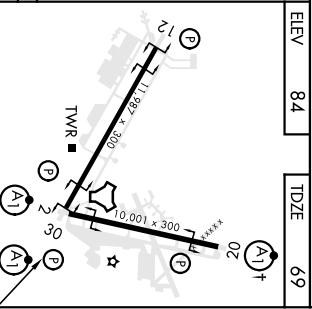
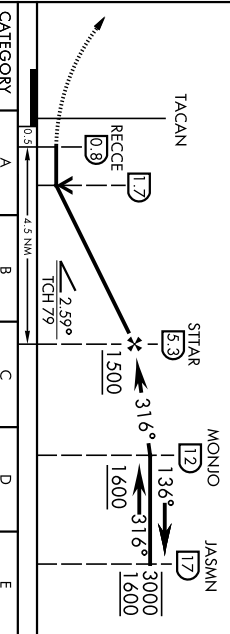
223

WARRINGTON  
Chan 2 DWG



EMERG SAFE ALT 100 NM 3500

2200  
TUFR  
DWG  
R-183  
12



CATEGORY	A	B	C	D	E
S-30 *	500/24 431 (500-½)		500/40 431 (500-¾)		
DIRCLING	580-1 496 (500-1)		680-1½ 596 (600-1½)	680-2 596 (600-2)	

HRL all rws  
† Rwy 20 opch lgt 1,500' nonstandard.