

APP CRS 096°	Rwy Idg TDZE Apt Elev	3549 727 727
------------------------	-----------------------------	---

RNAV (GPS) RWY 10

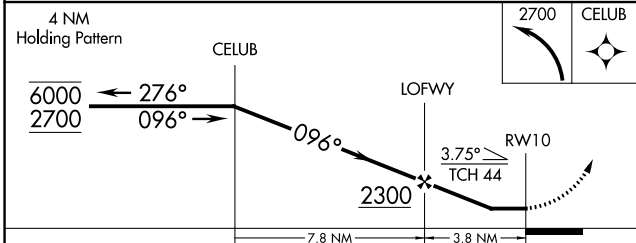
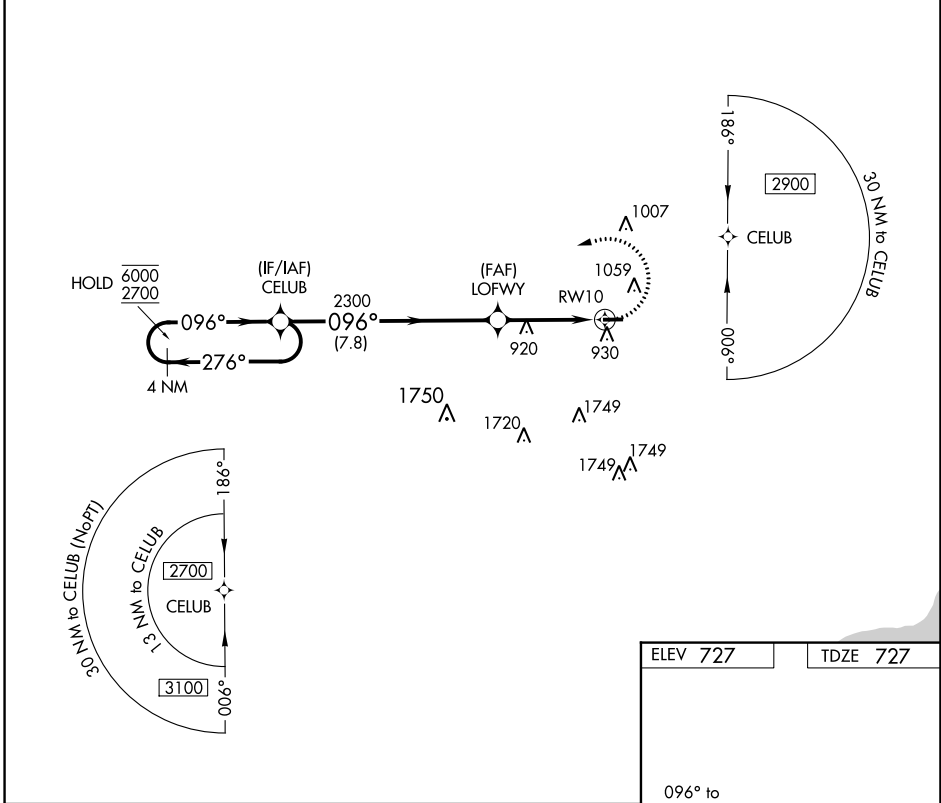
OAKLAND/TROY (VLL)

RNP APCH - GPS.

⚠ Circling to Rwy 28 NA at night. Rwy 10 helicopter visibility reduction below 1 SM NA.
⚠ Straight-in Rwy 10 at night, operational VGSI required, remain on or above VGSI glidepath until threshold.

MISSED APPROACH:
 Climbing left turn to 2700
 direct CELUB and hold.

AWOS-3 119.475	DETROIT APP CON 132.35 284.0	UNICOM 123.05 (CTAF) 0
--------------------------	--	----------------------------------



ELEV 727	TDZE 727
----------	----------

Visual glide slope indicator for RWY 10. The indicator shows a 0.7% up slope. The runway length is 3549 x 60 feet. The diagram also shows the transition from the holding pattern to the final approach segment starting at CELUB (Elev 2300) with a 096° heading, leading to RWY 10 (Elev 930) with a 3.75° glide slope.

CATEGORY	A	B	C	D
LNVA MDA	1220-1	493 (500-1)	1220-1 ³ / ₈ 493 (500-1 ³ / ₈)	NA
C CIRCLING	1400-1	673 (700-1)	1400-1 ¹ / ₂ 673 (700-1 ¹ / ₂)	NA

MIRL Rwy 9-27 **0**

EC-1, 22 FEB 2024 to 21 MAR 2024

EC-1, 22 FEB 2024 to 21 MAR 2024