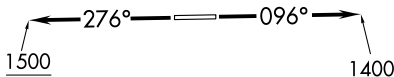


**TOP ALTITUDE:
ASSIGNED BY ATC**

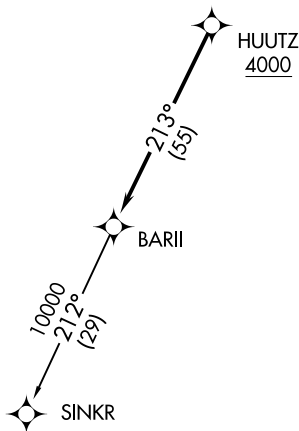
AWOS-3
119.475
CTAF
123.05
DETROIT DEP CON
132.35 284.0



TAKEOFF MINIMUMS:

Rwy 9: Standard.

Rwy 27: Standard with minimum climb
of 476' per NM to 1500.



- NOTE: RNAV 1.
- NOTE: RADAR required.
- NOTE: DME/DME/IRU or GPS required.
- NOTE: Turbojet departures at/above 10000, maintain 280K until advised by ATC.

NOTE: Chart not to scale.

DEPARTURE ROUTE DESCRIPTION

TAKEOFF RUNWAY 9: Climb on heading 096° to 1400 then as assigned for RADAR vectors to cross HUUTZ at or above 4000, thence....

TAKEOFF RUNWAY 27: Climb on heading 276° to 1500 then as assigned for RADAR vectors to cross HUUTZ at or above 4000, thence....

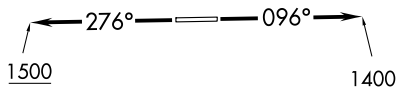
....on track 213° to BARII, then on (transition). Maintain ATC assigned altitude, expect filed altitude 10 minutes after departure.

SINKR TRANSITION (BARI2.SINKR):

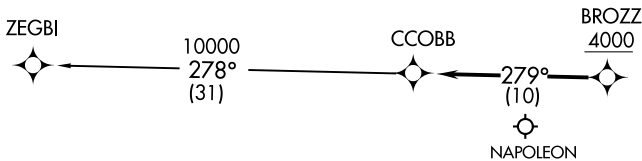
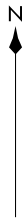
AWOS-3
119.475
CTAF
123.05
DETROIT DEP CON
132.35 284.0

**TOP ALTITUDE:
ASSIGNED BY ATC**

- NOTE: RNAV 1.
- NOTE: RADAR required.
- NOTE: DME/DME/IRU or GPS required.
- NOTE: Turbojet departures at/above 10000, maintain 280K until advised by ATC.
- NOTE: For use by aircraft filed at or below FL220, or as assigned by ATC.
- NOTE: CAUTION: Parachute jumping 6 NM SW of BROZZ, 3 NM radius of Napoleon Airport (3NP) at or below 17999 (SR-SS).



TAKEOFF MINIMUMS:
 Rwy 9: Standard.
 Rwy 27: Standard with minimum climb of 476' per NM to 1500.



NOTE: Chart not to scale.

DEPARTURE ROUTE DESCRIPTION

TAKEOFF RUNWAY 9: Climb on heading 096° to 1400 then as assigned for RADAR vectors to cross BROZZ at or above 4000, thence....
TAKEOFF RUNWAY 27: Climb on heading 276° to 1500 then as assigned for RADAR vectors to cross BROZZ at or above 4000, thence....
on track 279° to CCOBB, then on (transition). Maintain ATC assigned altitude, expect filed altitude 10 minutes after departure.
ZEGBI TRANSITION (CCOBB2.ZEGBI):

CCOBB TWO DEPARTURE (RNAV)
(CCOBB2.CCOBB) 15AUG19

(CCOBB2.CCOBB) 22251
CCOBB TWO DEPARTURE (RNAV)

AL-5293 (FAA)

TROY, MICHIGAN
OAKLAND/TROY (VTL)

OAKLAND/TROY (VTL)
TROY, MICHIGAN

**TOP ALTITUDE:
ASSIGNED BY ATC**

AWOS-3
119.475
CTAF
123.05
DETROIT DEP CON
132.35 284.0



TAKEOFF MINIMUMS:

Rwy 9: Standard.
Rwy 27: Standard with minimum climb
of 476' per NM to 1500.

NOTE: RNAV 1.
NOTE: RADAR required.
NOTE: DME/DME/IRU or GPS required.
NOTE: Turbojet departures at/above 10000,
maintain 280K until advised by ATC.

NOTE: Chart not to scale.

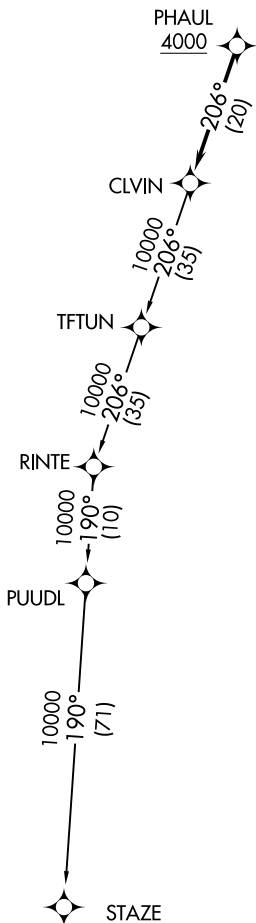
DEPARTURE ROUTE DESCRIPTION

TAKEOFF RUNWAY 9: Climb on heading 096° to 1400 then as assigned for RADAR vectors to cross PHAUL at or above 4000, thence....

TAKEOFF RUNWAY 27: Climb on heading 276° to 1500 then as assigned for RADAR vectors to cross PHAUL at or above 4000, thence....

...on track 206° to CLVIN, then on (transition). Maintain ATC assigned altitude, expect filed altitude 10 minutes after departure.

STAZE TRANSITION (CLVIN2.STAZE):

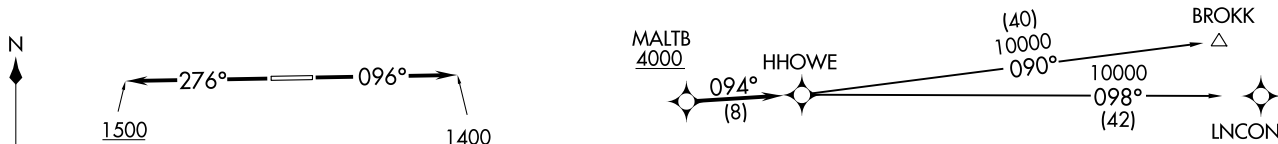


HHOWE THREE DEPARTURE (RNAV)
 (HHOWE3.HHOWE) 05DEC19

AWOS-3
 119.475
 CTAF
 123.05
 DETROIT DEP CON
 132.35 284.0

NOTE: RNAV 1.
 NOTE: RADAR required.
 NOTE: DME/DME/IRU or GPS required.
 NOTE: Turbojet departures at/above 10000,
 maintain 280K until advised by ATC.
 NOTE: BROKK TRANSITION: For use by flights filed at or below
 FL270, or as assigned by ATC.

**TOP ALTITUDE:
 ASSIGNED BY ATC**



TAKEOFF MINIMUMS:
 Rwy 9: Standard.
 Rwy 27: Standard with minimum climb
 of 476' per NM to 1500.

NOTE: Chart not to scale.

DEPARTURE ROUTE DESCRIPTION

TAKEOFF RUNWAY 9: Climb on heading 096° to 1400 then as assigned for RADAR vectors to cross MALTB at or above 4000, thence....

TAKEOFF RUNWAY 27: Climb on heading 276° to 1500 then as assigned for RADAR vectors to cross MALTB at or above 4000, thence....

...on track 094° to HHOWE, then on (transition). Maintain ATC assigned altitude, expect filed altitude 10 minutes after departure.

BROKK TRANSITION (HHOWE3.BROKK)
LNCON TRANSITION (HHOWE3.LNCON)

OAKLAND/TROY (VTL)
 TROY, MICHIGAN

(HHOWE3.HHOWE) 22251
 HHOWE THREE DEPARTURE (RNAV) AL-5293 (FAA)

OAKLAND/TROY (VTL)
 TROY, MICHIGAN

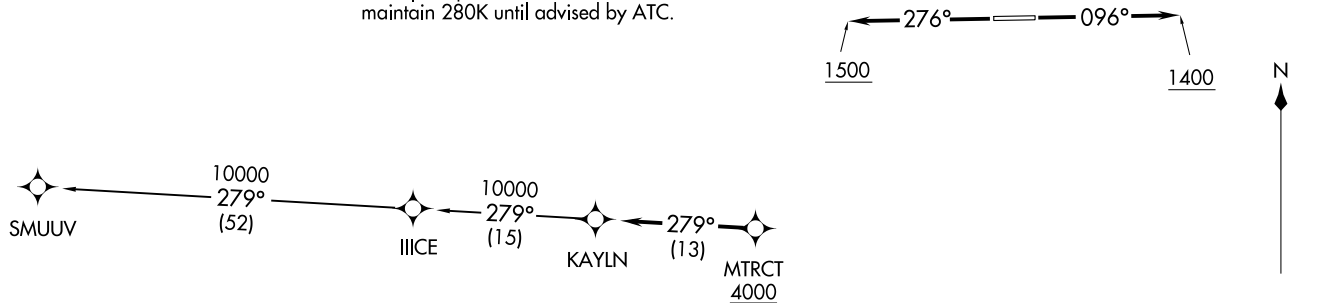
**TOP ALTITUDE:
ASSIGNED AT ATC**

TAKEOFF MINIMUMS:

Rwy 9: Standard.
Rwy 27: Standard with minimum climb
of 476' per NM to 1500.

AWOS-3
119.475
CTAF
123.05
DETROIT DEP CON
132.35 284.0

NOTE: RNAV 1.
NOTE: RADAR required.
NOTE: DME/DME/IRU or GPS required.
NOTE: Turbojet departures at/above 10000,
maintain 280K until advised by ATC.



NOTE: Chart not to scale.

DEPARTURE ROUTE DESCRIPTION

TAKEOFF RUNWAY 9: Climb on heading 096° to 1400 then as assigned for RADAR vectors to cross MTRCT at or above 4000, thence....

TAKEOFF RUNWAY 27: Climb on heading 276° to 1500 then as assigned for RADAR vectors to cross MTRCT at or above 4000, thence....

....on track 279° to KAYLN, then on (transition). Maintain ATC assigned altitude, expect filed altitude 10 minutes after departure.

SMUUV TRANSITION (KAYLN2.SMUUV):

KAYLN TWO DEPARTURE (RNAV)
(KAYLN2.KAYLN) 15AUG19

OAKLAND/TROY (VTL)
TROY, MICHIGAN

(KAYLN2.KAYLN) 22251
KAYLN TWO DEPARTURE (RNAV)
AL-5293 (FAA)

OAKLAND/TROY (VTL)
TROY, MICHIGAN

(KZLOV1.WINNZ) 22251

KZLOV ONE DEPARTURE (RNAV)

AL-5293 (FAA)

OAKLAND/TROY (VLL)

TROY, MICHIGAN

AWOS-3
119.475
CTAF
123.05
DETROIT DEP CON
132.35 284.0

RNAV 1 - DME/DME/IRU or GPS.

RADAR required.

**TOP ALTITUDE:
ASSIGNED BY ATC**

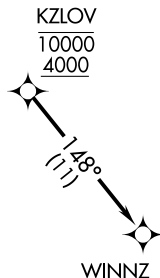


TAKEOFF MINIMUMS:

Rwy 10, 28: Standard with minimum climb
of 500' per NM to 1228.

NOTE: Turbojet departures at/above 10000,
maintain 280K until advised by ATC.

NOTE: For use by Cleveland terminal arrivals only.



NOTE: Chart not to scale.



DEPARTURE ROUTE DESCRIPTION

TAKEOFF RUNWAY 10: Climb on heading 096° or as assigned for RADAR vectors to cross KZLOV at or above 4000 and at or below 10000, thence....

TAKEOFF RUNWAY 28: Climb on heading 276° or as assigned for RADAR vectors to cross KZLOV at or above 4000 and at or below 10000, thence....

...on track 148° to WINNZ. Maintain assigned altitude, expect filed altitude ten minutes after departure.

KZLOV ONE DEPARTURE (RNAV)

(KZLOV1.WINNZ) 14JUL22

TROY, MICHIGAN

OAKLAND/TROY (VLL)

EC-1, 22 FEB 2024 to 21 MAR 2024

EC-1, 22 FEB 2024 to 21 MAR 2024

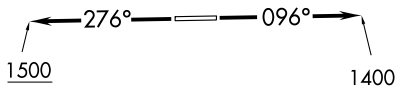
**TOP ALTITUDE:
ASSIGNED BY ATC**

TAKEOFF MINIMUMS:

Rwy 9: Standard.

Rwy 27: Standard with minimum climb
of 476' per NM to 1500.

AWOS-3
119.475
CTAF
123.05
DETROIT DEP CON
132.35 284.0



NOTE: RNAV 1.
NOTE: RADAR required.
NOTE: DME/DME/IRU or GPS required.
NOTE: Turbojet departures at/above 10000,
maintain 280K until advised by ATC.

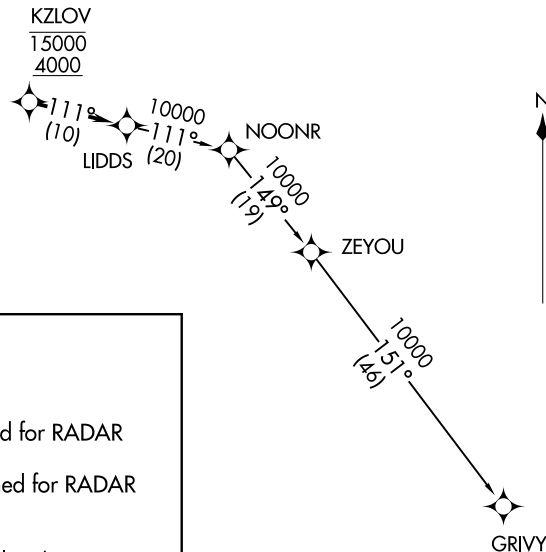
DEPARTURE ROUTE DESCRIPTION

TAKEOFF RUNWAY 9: Climb on heading 096° to 1400 then as assigned for RADAR vectors to cross KZLOV between 4000 and 15000, thence....

TAKEOFF RUNWAY 27: Climb on heading 276° to 1500 then as assigned for RADAR vectors to cross KZLOV between 4000 and 15000, thence....

....on track 111° to LIDDS, then on (transition). Maintain ATC assigned altitude, expect filed altitude 10 minutes after departure.

GRIVY TRANSITION (LIDDS2.GRIVY):



NOTE: Chart not to scale.

LIDDS TWO DEPARTURE (RNAV)
(LIDDS2.LIDDS) 15AUG19

OAKLAND/TROY (VTL)
TROY, MICHIGAN

(LIDDS2.LIDDS) 22251
LIDDS TWO DEPARTURE (RNAV)

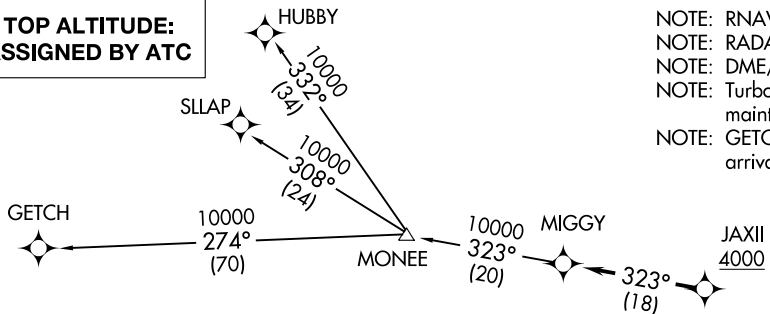
AL-5293 (FAA)

OAKLAND/TROY (VTL)
TROY, MICHIGAN

MIGGY TWO DEPARTURE (RNAV)
(MIGGY2.MIGGY) 15AUG19

OAKLAND/TROY (VTL)
TROY, MICHIGAN

**TOP ALTITUDE:
ASSIGNED BY ATC**



- NOTE: RNAV 1.
- NOTE: RADAR required.
- NOTE: DME/DME/IRU or GPS required.
- NOTE: Turbojet departures at/above 10000, maintain 280K until advised by ATC.
- NOTE: GETCH TRANSITION: For use by KMKE area arrivals only, or as assigned by ATC.

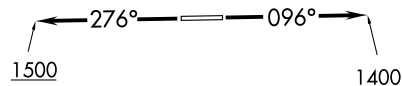
AWOS-3
119.475
CTAF
123.05
DETROIT DEP CON
132.35 284.0

DEPARTURE ROUTE DESCRIPTION

TAKEOFF RUNWAY 9: Climb on heading 096° to 1400 then as assigned for RADAR vectors to cross JAXII at or above 4000, thence....
TAKEOFF RUNWAY 27: Climb on heading 276° to 1500 then as assigned for RADAR vectors to cross JAXII at or above 4000, thence....

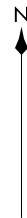
....on track 323° to MIGGY, then on (transition). Maintain ATC assigned altitude, expect filed altitude 10 minutes after departure.

- GETCH TRANSITION (MIGGY2.GETCH):
- HUBBY TRANSITION (MIGGY2.HUBBY):
- SLLAP TRANSITION (MIGGY2.SLLAP):



TAKEOFF MINIMUMS:

- Rwy 9: Standard.
- Rwy 27: Standard with minimum climb of 476' per NM to 1500.



NOTE: Chart not to scale.

(MIGGY2.MIGGY) 22251
MIGGY TWO DEPARTURE (RNAV)
AL-5293 (FAA)

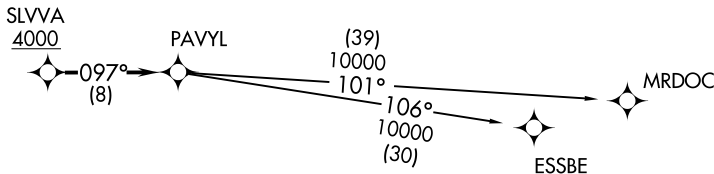
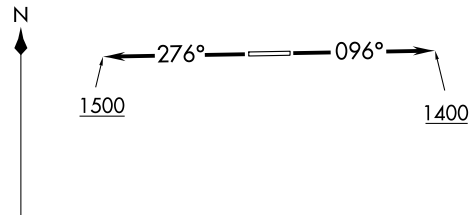
OAKLAND/TROY (VTL)
TROY, MICHIGAN

PAVYL TWO DEPARTURE (RNAV)
(PAVYL2.PAVYL) 15AUG19

**TOP ALTITUDE:
ASSIGNED BY ATC**

AWOS-3
119.475
CTAF
123.05
DETROIT DEP CON
132.35 284.0

NOTE: RNAV 1.
NOTE: RADAR required.
NOTE: DME/DME/IRU or GPS required.
NOTE: Turbojet departures at/above 10000,
maintain 280K until advised by ATC.



TAKEOFF MINIMUMS:
Rwy 9: Standard.
Rwy 27: Standard with minimum climb
of 476' per NM to 1500.

NOTE: Chart not to scale.

(PAVYL2.PAVYL) 22251
PAVYL TWO DEPARTURE (RNAV)

AL-5293 (FAA)

DEPARTURE ROUTE DESCRIPTION

TAKEOFF RUNWAY 9: Climb on heading 096° to 1400 then as assigned for RADAR vectors to cross SLVVA at or above 4000, thence....

TAKEOFF RUNWAY 27: Climb on heading 276° to 1500 then as assigned for RADAR vectors to cross SLVVA at or above 4000, thence....

....on track 097° to PAVYL, then on (transition). Maintain ATC assigned altitude, expect filed altitude 10 minutes after departure.

ESSBE TRANSITION (PAVYL2.ESSBE):

MRDOC TRANSITION (PAVYL2.MRDOC):

TROY, MICHIGAN
OAKLAND/TROY (VTL)

OAKLAND/TROY (VTL)
TROY, MICHIGAN

SNDRS TWO DEPARTURE (RNAV)
 (SNDRS2.SNDRS) 15AUG19

OAKLAND/TROY (VLL)
 TROY, MICHIGAN

DEPARTURE ROUTE DESCRIPTION

TAKEOFF RUNWAY 9: Climb on heading 096° to 1400 then as assigned for RADAR vectors to cross JWELS at or above 4000, thence....

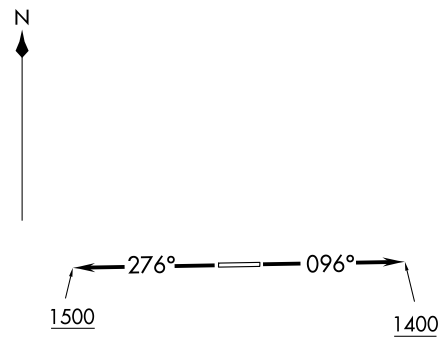
TAKEOFF RUNWAY 27: Climb on heading 276° to 1500 then as assigned for RADAR vectors to cross JWELS at or above 4000, thence....

....on track 218° to SNDRS, then on (transition). Maintain ATC assigned altitude, expect filed altitude 10 minutes after departure.

BGHRT TRANSITION (SNDRS2.BGHRT):
TORRR TRANSITION (SNDRS2.TORRR):

**TOP ALTITUDE:
ASSIGNED BY ATC**

AWOS-3
119.475
CTAF
123.05
DETROIT DEP CON
132.35 284.0

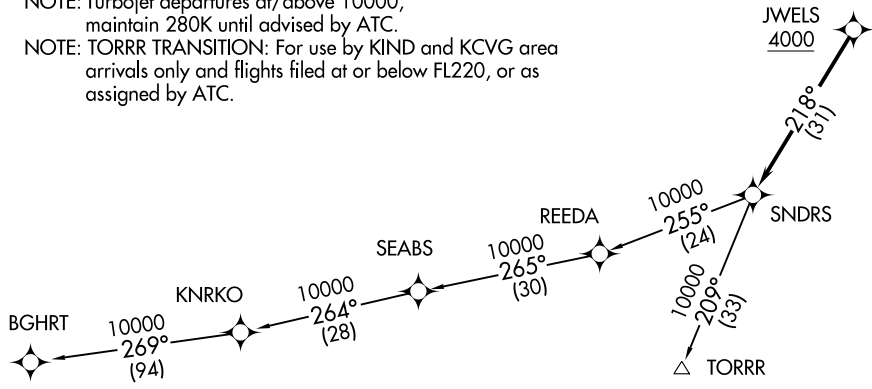


(SNDRS2.SNDRS) 22251
 SNDRS TWO DEPARTURE (RNAV)

AL-5293 (FAA)

OAKLAND/TROY (VLL)
 TROY, MICHIGAN

- NOTE: RNAV 1.
- NOTE: RADAR required.
- NOTE: DME/DME/IRU or GPS required.
- NOTE: Turbojet departures at/above 10000, maintain 280K until advised by ATC.
- NOTE: TORRR TRANSITION: For use by KIND and KCVG area arrivals only and flights filed at or below FL220, or as assigned by ATC.

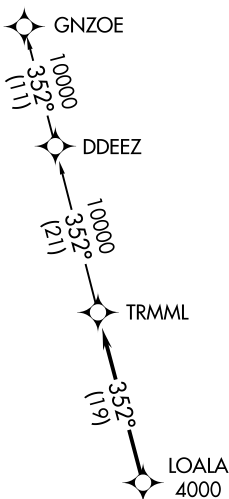


TAKEOFF MINIMUMS:
 Rwy 9: Standard.
 Rwy 27: Standard with minimum climb of 476' per NM to 1500.

NOTE: Chart not to scale.

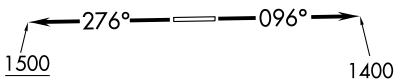
**TOP ALTITUDE:
ASSIGNED BY ATC**

AWOS-3
119.475
CTAF
123.05
DETROIT DEP CON
132.35 284.0



TAKEOFF MINIMUMS:

Rwy 9: Standard.
Rwy 27: Standard with minimum climb
of 476' per NM to 1500.



- NOTE: RNAV 1.
- NOTE: RADAR required.
- NOTE: DME/DME/IRU or GPS required.
- NOTE: Turbojet departures at/above 10000, maintain 280K until advised by ATC.

NOTE: Chart not to scale.



DEPARTURE ROUTE DESCRIPTION

TAKEOFF RUNWAY 9: Climb on heading 096° to 1400 then as assigned for RADAR vectors to cross LOALA at or above 4000, thence....

TAKEOFF RUNWAY 27: Climb on heading 276° to 1500 then as assigned for RADAR vectors to cross LOALA at or above 4000, thence....

....on track 352° to TRMML, then on (transition). Maintain ATC assigned altitude, expect filed altitude 10 minutes after departure.

GNZOE TRANSITION (TRMML3.GNZOE):

(ZETTR3.ZETTR) 22251

ZETTR THREE DEPARTURE (RNAV)

AL-5293 (FAA)

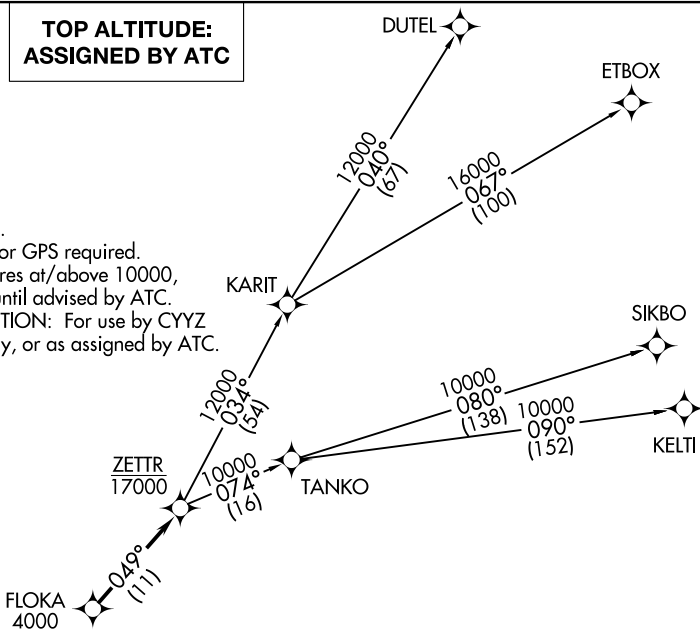
OAKLAND/TROY (VLL)

TROY, MICHIGAN

AWOS-3
119.475
CTAF
123.05
DETROIT DEP CON
132.35 284.0

**TOP ALTITUDE:
ASSIGNED BY ATC**

- NOTE: RNAV 1.
- NOTE: RADAR required.
- NOTE: DME/DME/IRU or GPS required.
- NOTE: Turbojet departures at/above 10000, maintain 280K until advised by ATC.
- NOTE: TANKO TRANSITION: For use by CYYZ area arrivals only, or as assigned by ATC.



TAKEOFF MINIMUMS:

Rwy 9: Standard.

Rwy 27: Standard with minimum climb of 476' per NM to 1500.

DEPARTURE ROUTE DESCRIPTION

TAKEOFF RUNWAY 9: Climb on heading 096° to 1400 then as assigned for RADAR vectors to cross FLOKA at or above 4000, thence....

TAKEOFF RUNWAY 27: Climb on heading 276° to 1500 then as assigned for RADAR vectors to cross FLOKA at or above 4000, thence....

....on track 049° to cross ZETTR at or below 17000, then on (transition). Maintain ATC assigned altitude, expect filed altitude 10 minutes after departure.

DUTEL TRANSITION (ZETTR3.DUTEL):

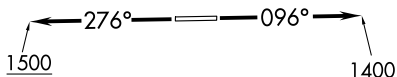
ETBOX TRANSITION (ZETTR3.ETBOX):

KELTI TRANSITION (ZETTR3.KELTI):

SIKBO TRANSITION (ZETTR3.SIKBO):

TANKO TRANSITION (ZETTR3.TANKO):

NOTE: Chart not to scale.



ZETTR THREE DEPARTURE (RNAV)
(ZETTR3.ZETTR) 05DEC19

TROY, MICHIGAN
OAKLAND/TROY (VLL)

EC-1, 22 FEB 2024 to 21 MAR 2024

EC-1, 22 FEB 2024 to 21 MAR 2024