

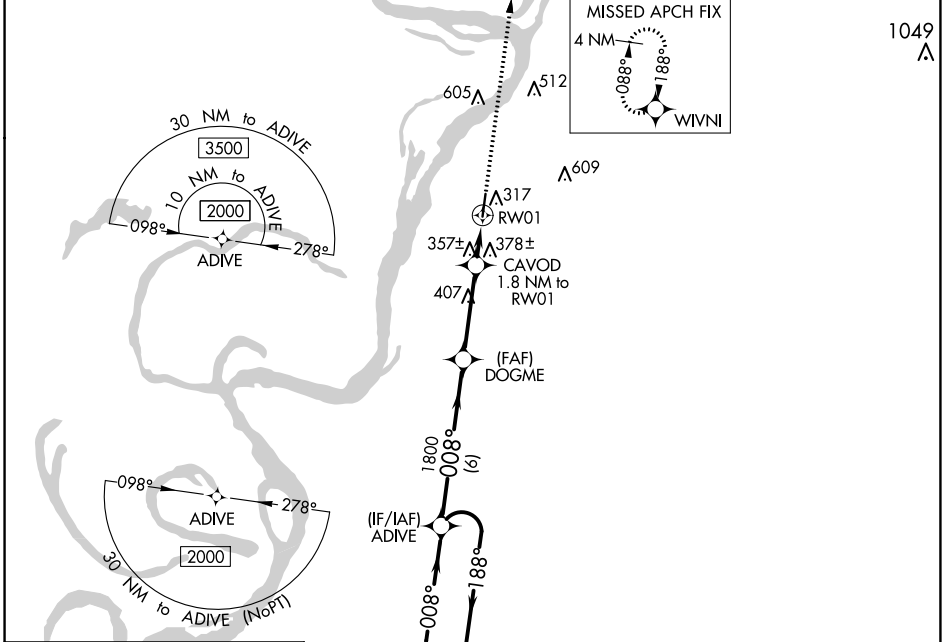
WAAS CH 66030 W01A	APP CRS 008°	Rwy Idg TDZE Apt Elev	4702 104 107
--	------------------------	-----------------------------	---

RNAV (GPS) RWY 1

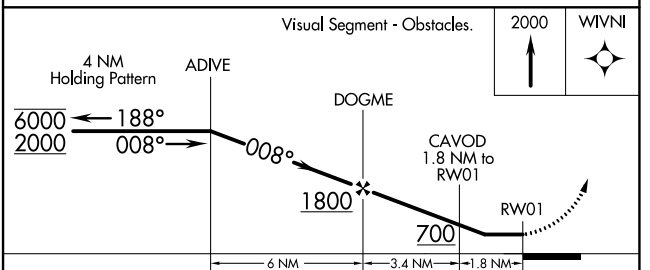
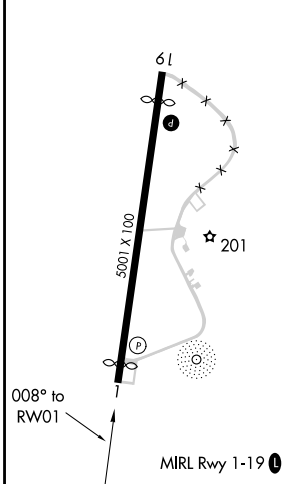
VICKSBURG MUNI (VKS)

RNP APCH.	<p>▽ Circling NA for Cat D west of Rwy 1-19. Procedure NA at night. ⚠ Rwy 1 helicopter visibility reduction below 1 SM NA.</p>	MISSED APPROACH: Climb to 2000 direct WIVNI and hold.
-----------	--	---

AWOS-3 118.85	MEMPHIS CENTER 132.5 259.1	UNICOM 122.8 (CTAF) 0
-------------------------	--------------------------------------	--



ELEV 107	TDZE 104
----------	----------



CATEGORY		A	B	C	D
LP	MDA	620-1	516 (600-1)	620-1 3/8	516 (600-1 3/8)
LN	NAV MDA	640-1	536 (600-1)	640-1 1/2	536 (600-1 1/2)
CIRCLING		700-1	593 (600-1)	700-1 1/2 593 (600-1 1/2)	860-2 1/2 753 (800-2 1/2)

SC-4, 27 JAN 2022 to 24 FEB 2022

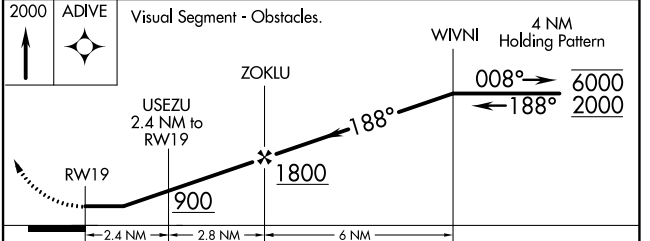
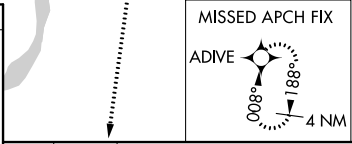
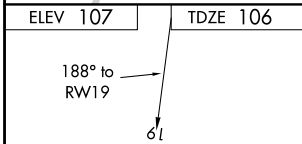
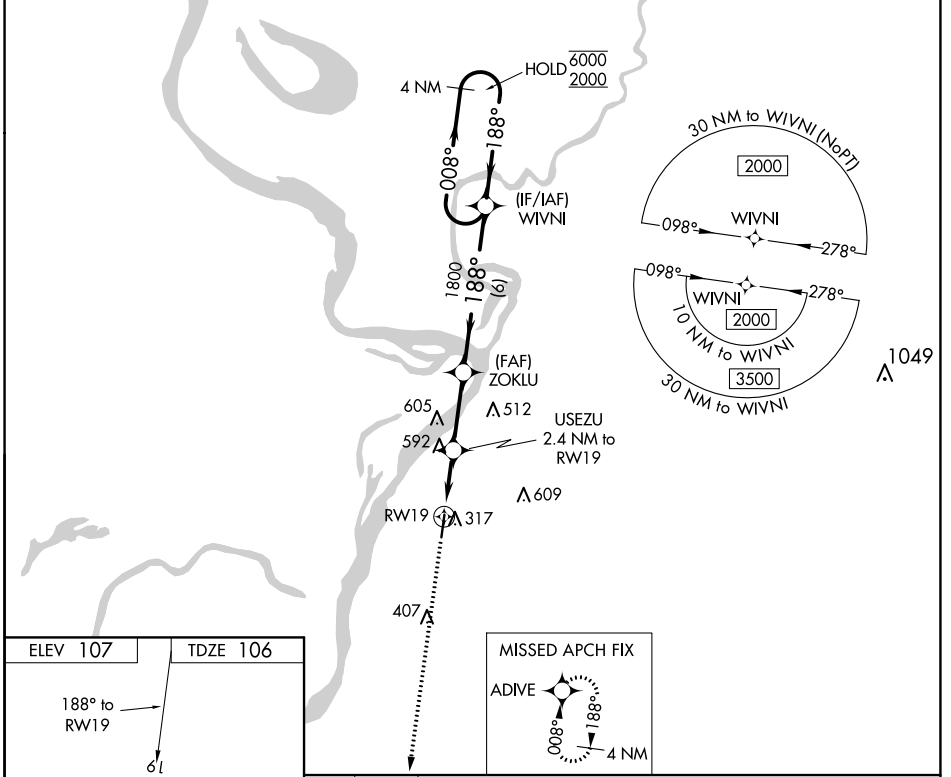
SC-4, 27 JAN 2022 to 24 FEB 2022

WAAS CH 60932 W19A	APP CRS 188°	Rwy Idg TDZE Apt Elev	4529 106 107
--	------------------------	-----------------------------	---

RNAV (GPS) RWY 19

VICKSBURG MUNI (VKS)

RNP APCH.		MISSED APPROACH: Climb to 2000 direct ADIVE and hold.
AWOS-3 118.85	MEMPHIS CENTER 132.5 259.1	UNICOM 122.8 (CTAF)



CATEGORY	A	B	C	D
LP MDA	660-1	554 (600-1)	660-1 $\frac{5}{8}$	554 (600-1 $\frac{5}{8}$)
LNAV MDA	860-1 754 (800-1)	860-1 $\frac{1}{4}$ 754 (800-1 $\frac{1}{4}$)	860-2	754 (800-2)
CIRCLING	860-1 753 (800-1)	860-1 $\frac{1}{4}$ 753 (800-1 $\frac{1}{4}$)	860-2 $\frac{1}{4}$ 753 (800-2 $\frac{1}{4}$)	860-2 $\frac{1}{2}$ 753 (800-2 $\frac{1}{2}$)

SC-4, 27 JAN 2022 to 24 FEB 2022

SC-4, 27 JAN 2022 to 24 FEB 2022