

LOC/DME I-VIS 108.5 Chan 22	APP CRS 301°	Rwy ldg TDZE Apt Elev	5635 295 295
--	------------------------	-----------------------------	---

ILS or LOC RWY 30

VISALIA MUNI (VIS)

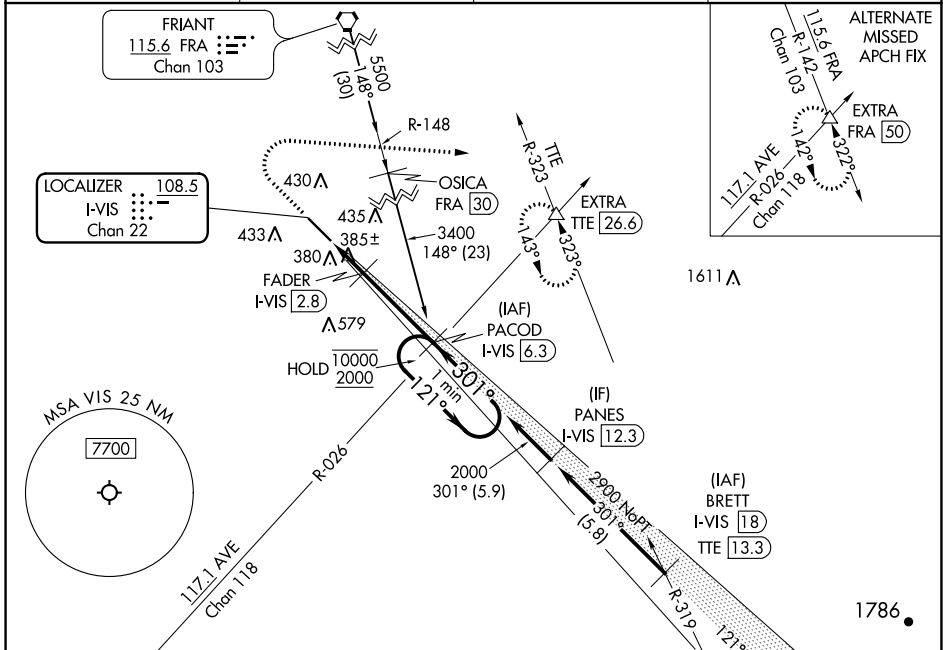
DME required.

▼ For inop ALS, increase S-LOC 30
▲ NA Cat C/D visibility to 1 SM.

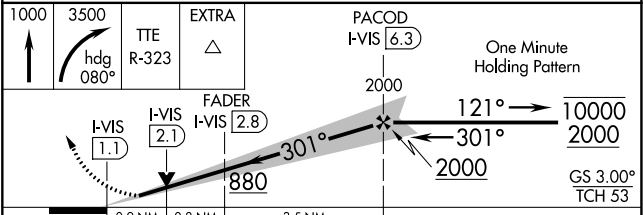
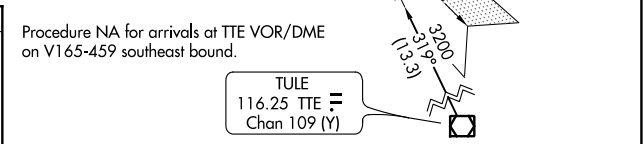
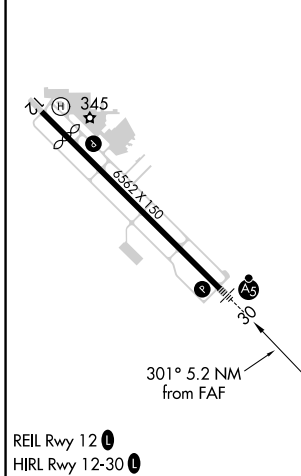
MALSR

MISSED APPROACH: Climb to 1000 then climbing right turn to 3500 on heading 080° and on TTE VOR/DME R-323 to EXTRA INT/TTE 26.6 DME and hold, continue climb-in-hold to 3500.

AWOS-3PT 119.925	FRESNO APP CON 118.5	CLNC DEL 118.5	UNICOM 123.05 (CTAF) 0
----------------------------	--------------------------------	--------------------------	---



ELEV 295	D	TDZE 295
----------	----------	----------



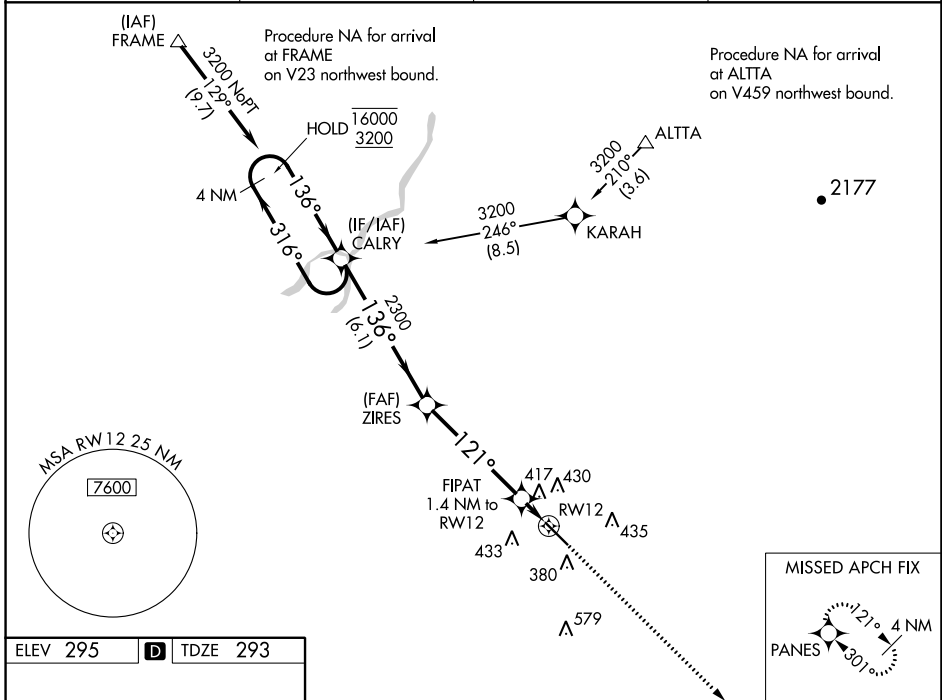
CATEGORY	A	B	C	D
S-ILS 30	502-½ 207 (300-½)			
S-LOC 30	640-½ 345 (400-½)	640-⅝ 345 (400-⅝)		
C CIRCLING	720-1 425 (500-1)	760-1 465 (500-1)	760-1½ 465 (500-1½)	940-2 645 (700-2)

WAAS CH 82423 W12A	APP CRS 121°	Rwy Idg TDZE Apt Elev	5635 293 295
--	------------------------	-----------------------------	---

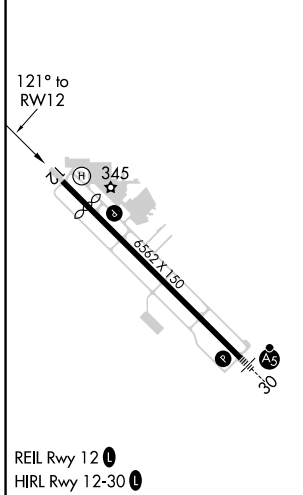
RNAV (GPS) RWY 12

VISALIA MUNI (VIS)

RNP APCH.		MISSED APPROACH: Climb to 2900 direct PANES and hold.	
<p>▼ For uncompensated Baro-VNAV systems, LNAV/VNAV NA below -15°C or above 54°C.</p>			
AWOS-3PT 119.925	FRESNO APP CON 118.5	CLNC DEL 118.5	UNICOM 123.05 (CTAF) 0



ELEV 295	D	TDZE 293
----------	----------	----------



4 NM Holding Pattern CALRY				VGSI and RNAV glidepath not coincident (VGSI Angle 3.00/TCH 40).		2900	PANES
16000 ← 316°		3200 → 136°		2300		*LNAV only.	
GP 3.00°		TCH 50		2300		FIPAT 1.4 NM to RWY 12	
		6.1 NM		4.8 NM		1.4 NM	
CATEGORY	A	B	C	D			
LPV DA	543-3/4		250 (300-3/4)				
LNAV/VNAV DA	697-1/8		404 (500-1/8)				
LNAV MDA	680-1 387 (400-1)		680-1/8 387 (400-1/8)				
C CIRCLING	720-1 425 (500-1)	760-1 465 (500-1)	760-1/2 465 (500-1/2)	940-2 645 (700-2)			

SW-2, 18 MAY 2023 to 15 JUN 2023

SW-2, 18 MAY 2023 to 15 JUN 2023

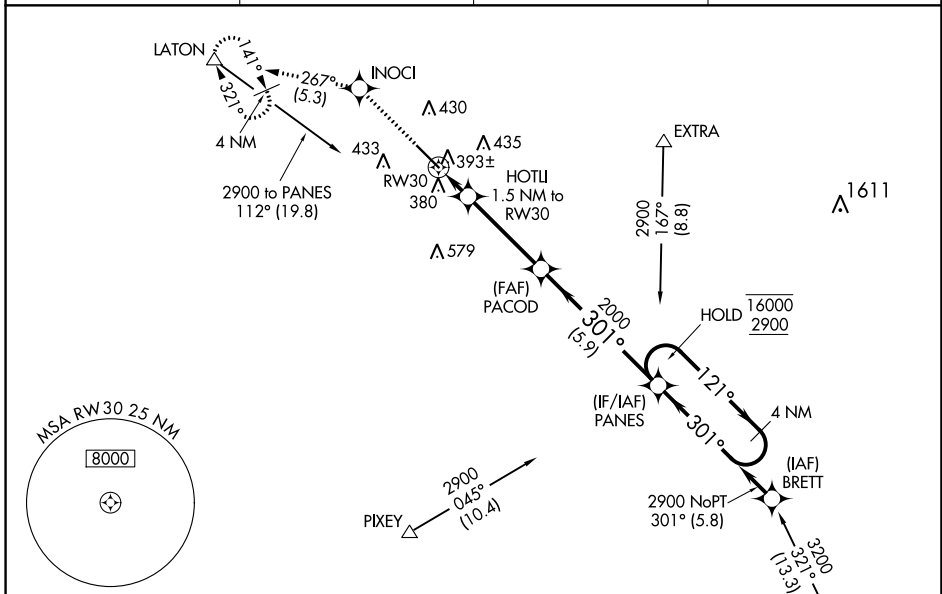
WAAS CH 77623 W30A	APP CRS 301°	Rwy Idg TDZE Apt Elev	5635 295 295
--	------------------------	-----------------------------	---

RNAV (GPS) RWY 30

VISALIA MUNI (VIS)

RNP APCH.	MALSR	MISSED APPROACH: Climb to 3000 direct INOCI and on track 267° to LATON and hold, continue climb-in-hold to 3000.
<p>⚠ For uncompensated Baro-VNAV systems, LNAV/VNAV NA below -15°C or above 54°C. For inop ALS, increase LNAV/VNAV all Cats visibility to 3/4 SM, LNAV Cats C/D to 1 SM.</p>		

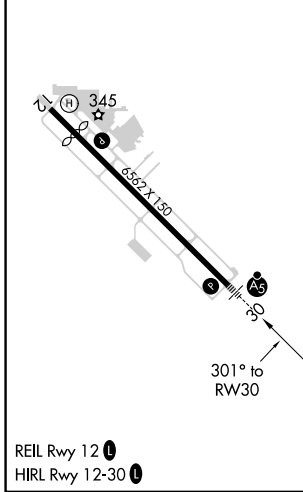
AWOS-3PT 119.925	FRESNO APP CON 118.5	CLNC DEL 118.5	UNICOM 123.05 (CTAF)
----------------------------	--------------------------------	--------------------------	--------------------------------



SW-2, 18 MAY 2023 to 15 JUN 2023

SW-2, 18 MAY 2023 to 15 JUN 2023

ELEV 295	D	TDZE 295
----------	----------	----------



3000	INOCI	LATON	PANES	4 NM Holding Pattern
↑	✧	tr 267°	△	
*LNAV only.		HOTLI 1.5 NM to RW30	2000	GP 3.00° TCH 53
RW30		*1 NM to RW30	301°	16000
820*		2000	121°	2900
1 NM		0.5 NM	3.7 NM	5.9 NM
CATEGORY	A	B	C	D
LPV DA	502-1/2 207 (300-1/2)			
LNAV/VNAV DA	554-1/2 259 (300-1/2)			
LNAV MDA	660-1/2 365 (400-1/2)		660-5/8 365 (400-5/8)	
C CIRCLING	720-1 425 (500-1)	760-1 465 (500-1)	760-1/2 465 (500-1/2)	940-2 645 (700-2)