

WAAS CH 72719 W22A	APP CRS 225°	Rwy Idg TDZE Apt Elev	5500 1117 1148
--	------------------------	-----------------------------	---

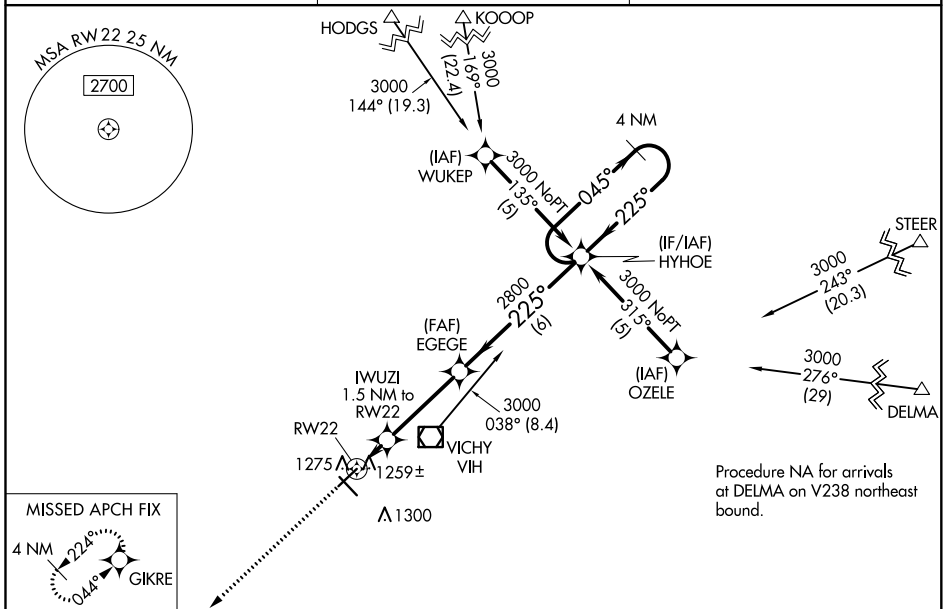
RNAV (GPS) RWY 22

ROLLA NTL (VIH)

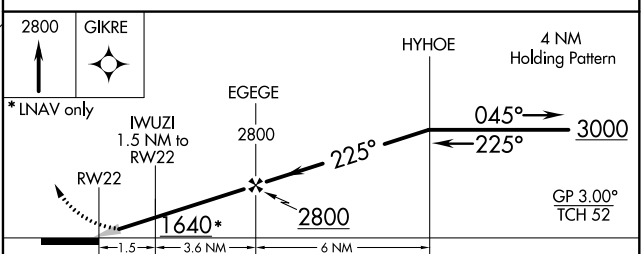
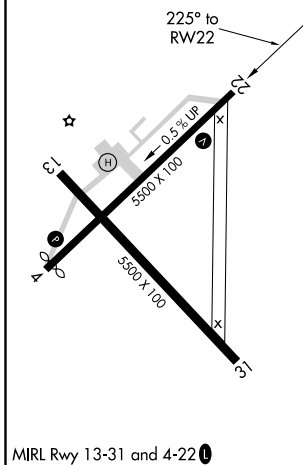
NA For uncompensated Baro-VNAV systems, LNAV/VNAV NA below -17°C (2°F) or above 46°C (114°F). DME/DME RNP-0.3 NA.

MISSED APPROACH: Climb to 2800 direct GIKRE and hold.

ASOS 119.025	KANSAS CITY CENTER 128.35 284.675	UNICOM 123.0 (CTAF) 0
------------------------	---	--



ELEV 1148	TDZE 1117
-----------	-----------



CATEGORY	A	B	C	D
LPV DA	1367-3/4 250 (300-3/4)			
LNAV/VNAV DA	1529-1 1/2 412 (400-1 1/2)			
LNAV MDA	1520-1	403 (400-1)	1520-1 1/4	403 (400-1 1/4)
CIRCLING	1700-1	552 (600-1)	1700-1 1/2 552 (600-1 1/2)	1740-2 592 (600-2)

NC-3, 27 JAN 2022 to 24 FEB 2022

NC-3, 27 JAN 2022 to 24 FEB 2022

WAAS CH 78119 W04A	APP CRS 045°	Rwy Idg TDZE Apt Elev	5287 1137 1148
--	------------------------	-----------------------------	---

RNAV (GPS) RWY 4

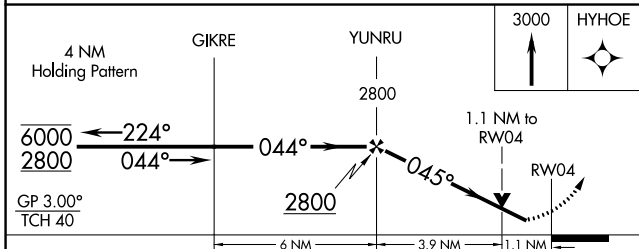
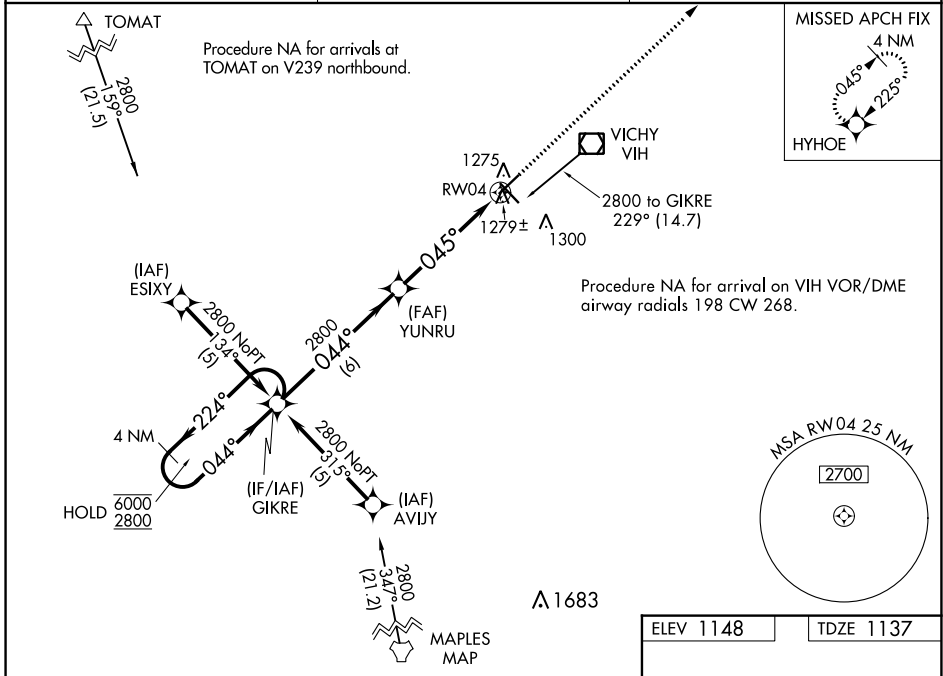
ROLLA NTL (VIH)

RNP APCH-GPS.

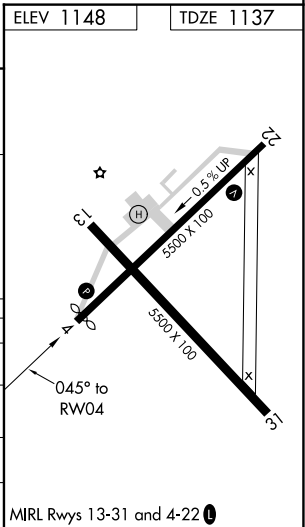
▼ Rwy 4 helicopter visibility reduction below 3/4 SM NA.
▲ For uncompensated Baro-VNAV systems, LNAV/VNAV NA below -17°C or above 54°C.

MISSED APPROACH: Climb to 3000 direct HYHOE and hold.

ASOS 119.025	KANSAS CITY CENTER 128.35 284.675	UNICOM 123.0 (CTAF) 0
------------------------	---	---------------------------------



CATEGORY	A	B	C	D
LPV DA		1387-1	250 (300-1)	
LNAV/VNAV DA		1549-1 1/8	412 (500-1 1/8)	
LNAV MDA	1540-1	403 (400-1)	1540-1 1/8	403 (400-1 1/8)
C CIRCLING	1580-1 432 (500-1)	1600-1 452 (500-1)	1600-1 1/2 452 (500-1 1/2)	1740-2 592 (600-2)



NC-3, 27 JAN 2022 to 24 FEB 2022

NC-3, 27 JAN 2022 to 24 FEB 2022

VOR/DME VIH 117.7 Chan 124	APP CRS 241°	Rwy Idg 5500 TDZE 1117 Apt Elev 1148
--	------------------------	---

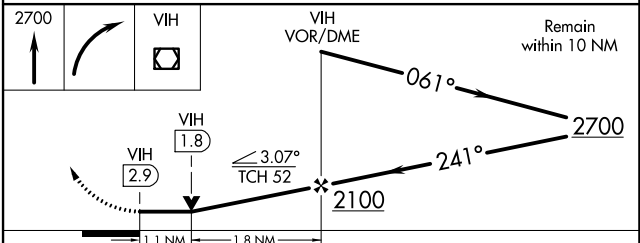
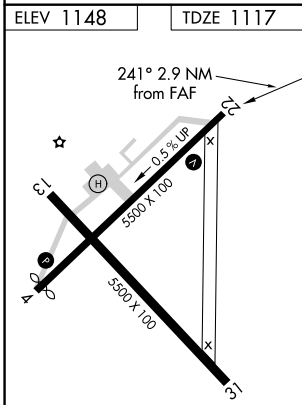
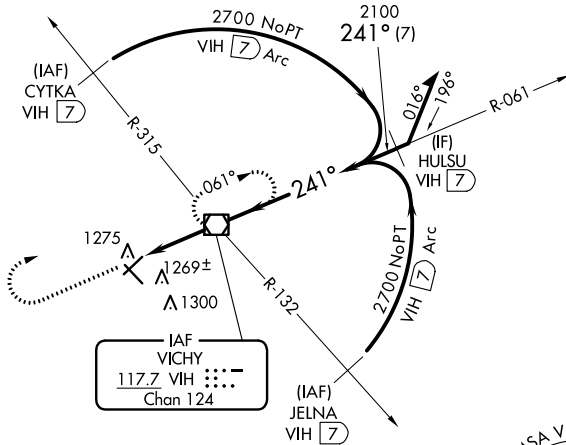
VOR RWY 22

ROLLA NTL (VIH)

⚠ When local altimeter setting not received, use Fort Leonard Wood altimeter setting; increase all MDA 80 feet and S-22 Cat D and Circling Cat D visibility ¼ SM. VDP NA with Fort Leonard Wood altimeter setting.

MISSED APPROACH: Climb to 2700 then right turn direct VIH VOR/DME and hold.

ASOS 119.025	KANSAS CITY CENTER 128.35 284.675	UNICOM 123.0 (CTAF) 0
------------------------	---	---------------------------------



MIRL Rwy 13-31 and 4-22	FAF to MAP 2.9 NM				
Knots	60	90	120	150	180
Min:Sec	2:54	1:56	1:27	1:10	0:58
CATEGORY	A	B	C	D	
S-22	1520-1	403 (400-1)	1520-1¼	403 (400-1¼)	
CIRCLING	1600-1	452 (500-1)	1600-1½	1740-2	592 (600-2)

NC-3, 27 JAN 2022 to 24 FEB 2022

NC-3, 27 JAN 2022 to 24 FEB 2022

VOR/DME VIH 117.7 Chan 124	APP CRS 056°	Rwy Idg TDZE Apt Elev	5287 1137 1148
--	------------------------	-----------------------------	---

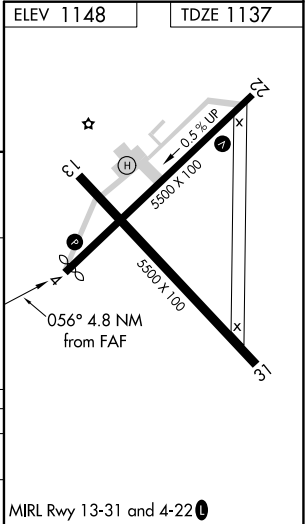
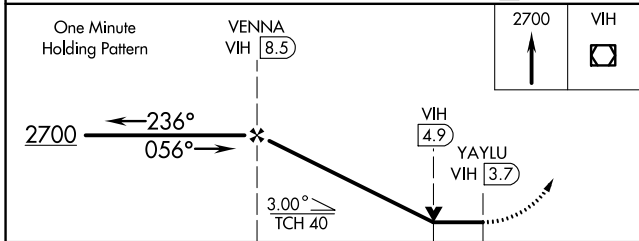
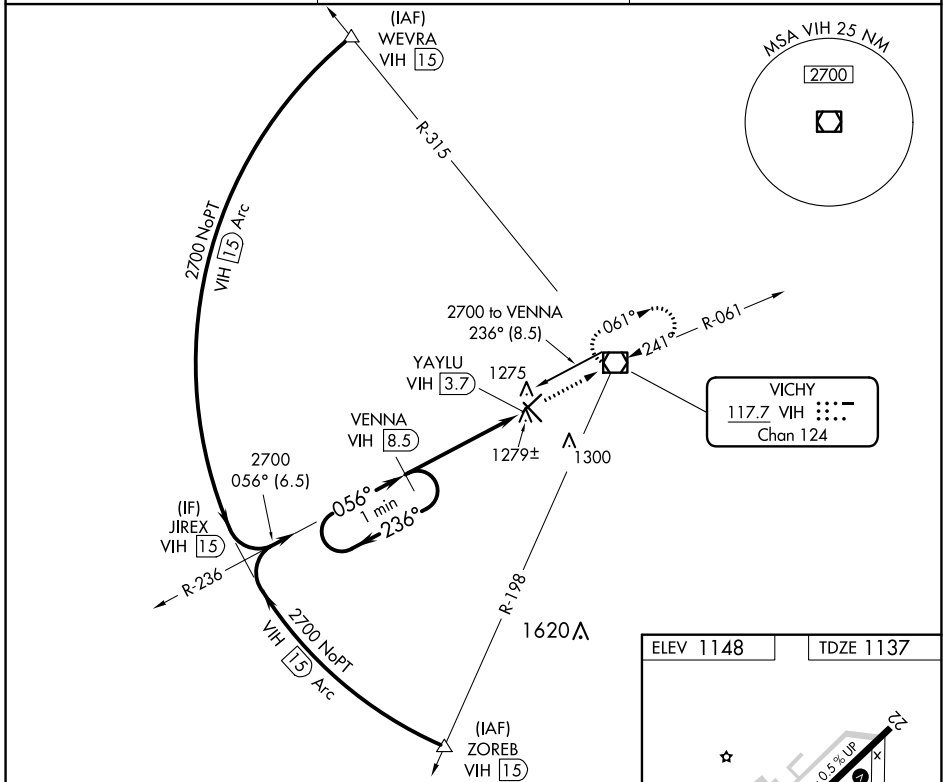
VOR/DME RWY 4

ROLLA NTL (VIH)

⚠ Visibility reduction by helicopters NA. When local altimeter setting not received, use Fort Leonard Wood altimeter setting; increase all MDA 80 feet and S-4 Cat D and Circling Cat D visibility ¼ SM. VDP NA with Fort Leonard Wood altimeter setting.

MISSED APPROACH: Climb to 2700 direct VIH VOR/DME and hold.

ASOS 119.025	KANSAS CITY CENTER 128.35 284.675	UNICOM 123.0 (CTAF) 0
------------------------	---	---------------------------------



CATEGORY	A	B	C	D
S-4	1540-1	403 (400-1)	1540-1¼	403 (400-1¼)
CIRCLING	1600-1	452 (500-1)	1600-1½ 452 (500-1½)	1740-2 592 (600-2)

NC-3, 27 JAN 2022 to 24 FEB 2022

NC-3, 27 JAN 2022 to 24 FEB 2022