

WAAS CH <b>99626</b> <b>W18A</b>	APP CRS <b>176°</b>	Rwy Idg <b>3907</b> TDZE <b>757</b> Apt Elev <b>758</b>
--	------------------------	---

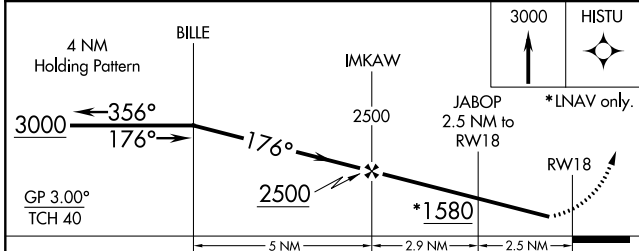
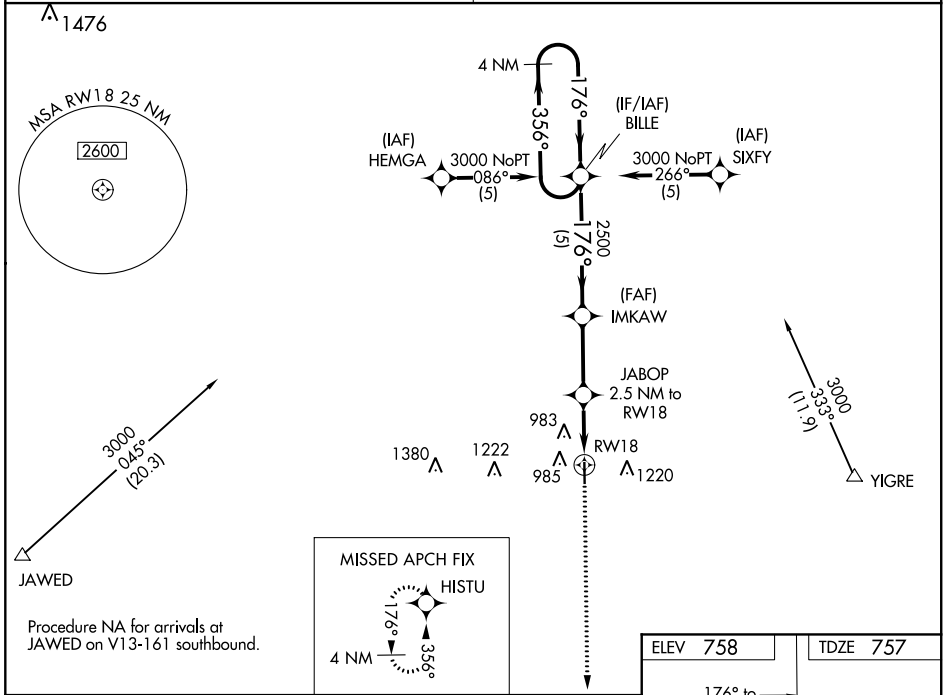
# RNAV (GPS) RWY 18

TRENTON MUNI (TRX)

**▽** Baro-VNAV NA. Use Chillicothe altimeter setting, when not received, use Kirksville altimeter setting and increase all DA 93 feet and all MDA 100 feet. Increase LPV visibility  $\frac{3}{8}$  mile all Cats and LNAV/VNAV  $\frac{1}{4}$  all Cats. DME/DME RNP-0.3 NA.  
**△ NA** Helicopter visibility reduction below  $\frac{3}{4}$  SM NA.

MISSED APPROACH: Climb to 3000 direct HISTU and hold.

KANSAS CITY CENTER <b>125.25 235.975</b>	UNICOM <b>122.8 (CTAF) 0</b>
---	---------------------------------



ELEV 758	TDZE 757
176° to RW18	
81 4307 X 75 36	
MIRL Rwy 18-36 0 REIL Rwy 18 and 36 0	

NC-3, 12 AUG 2021 to 09 SEP 2021

NC-3, 12 AUG 2021 to 09 SEP 2021

WAAS CH <b>63126</b> <b>W36A</b>	APP CRS <b>356°</b>	Rwy Idg <b>4307</b> TDZE <b>757</b> Apt Elev <b>758</b>
--	------------------------	---

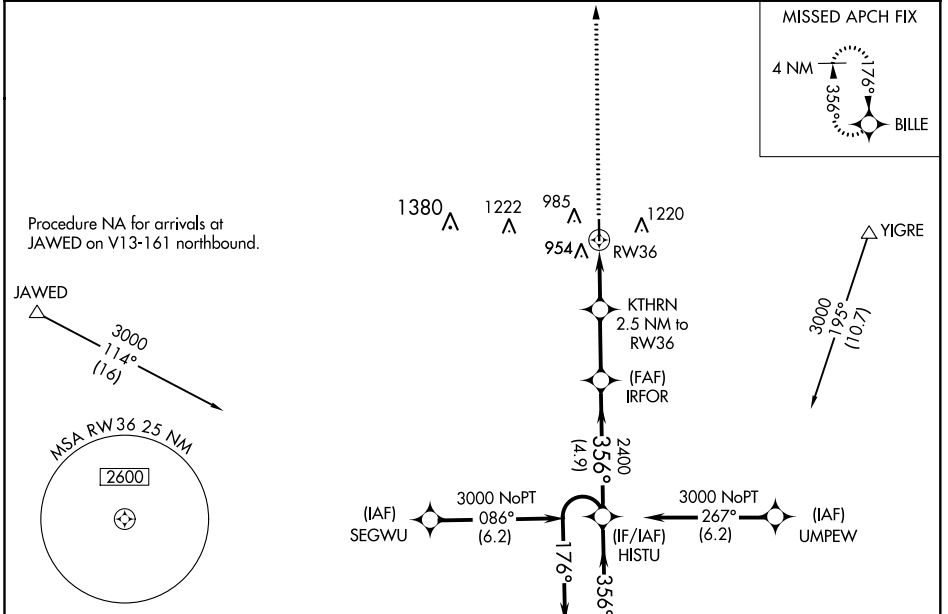
# RNAV (GPS) RWY 36

TRENTON MUNI (TRX)

**⚠** When VGSI inop, Circling Rwy 18 NA at night. Baro-VNAV NA. Use Chillicothe altimeter setting. When not received, use Kirksville altimeter setting and increase all DA 93 feet and all MDA 100 feet. Increase LPV visibility ¼ mile all Cats and LNAV/VNAV ⅓ mile all Cats. DME/DME RNP-0.3 NA. Visibility reduction by helicopters NA.

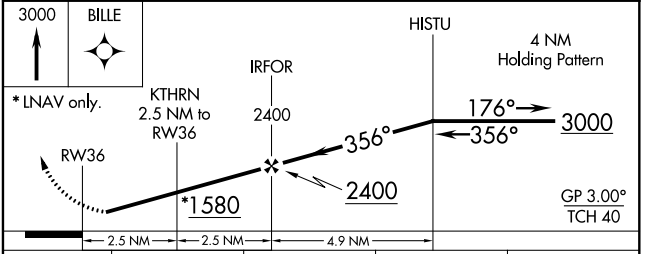
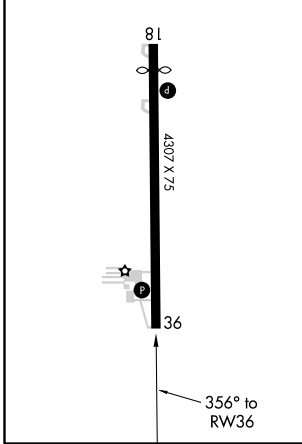
**⚠ NA** MISSED APPROACH: Climb to 3000 direct BILLE and hold.

KANSAS CITY CENTER <b>125.25 235.975</b>	UNICOM <b>122.8 (CTAF) 0</b>
---	---------------------------------



ELEV 758	TDZE 757
----------	----------

MIRL Rwy 18-36  
REIL Rwy 18 and 36



CATEGORY	A	B	C	D
LPV DA	1082-1 1/8	325 (400-1 1/8)		NA
LNAV/VNAV DA	1195-1 1/2	438 (500-1 1/2)		NA
LNAV MDA	1320-1	563 (600-1)		NA
CIRCLING	1340-1	582 (600-1)		NA

NC-3, 12 AUG 2021 to 09 SEP 2021

NC-3, 12 AUG 2021 to 09 SEP 2021