

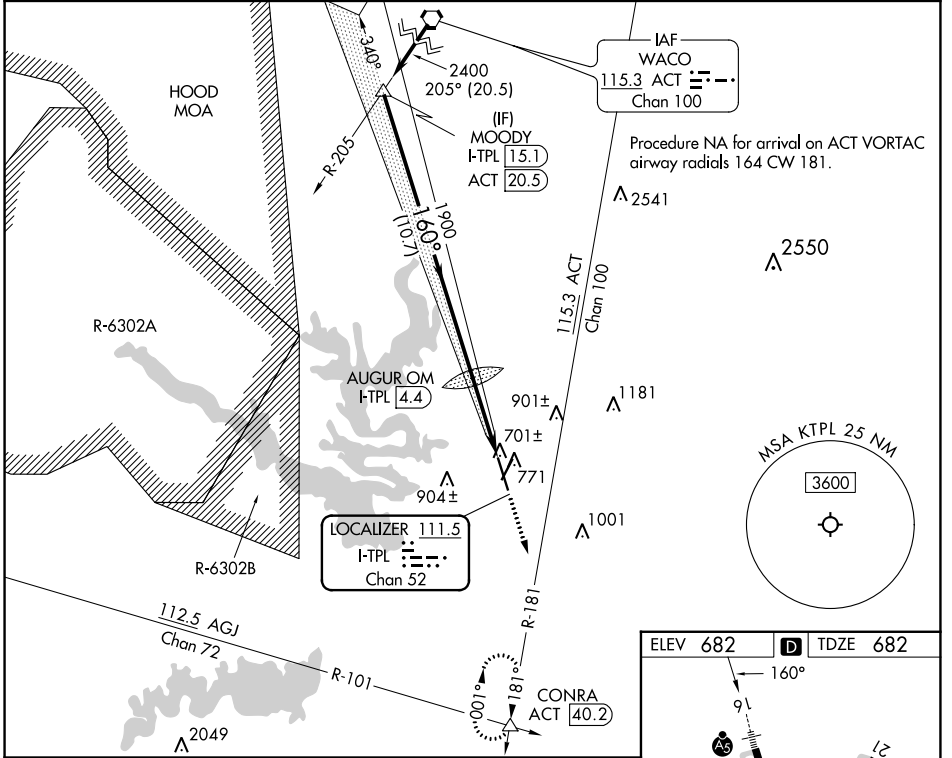
LOC/DME I-TPL <b>111.5</b> Chan <b>52</b>	APP CRS <b>160°</b>	Rwy Idg <b>7000</b> TDZE <b>682</b> Apt Elev <b>682</b>
---	------------------------	---

# ILS or LOC RWY 16

## DRAUGHON-MILLER CENTRAL TEXAS RGNL (T'PL)

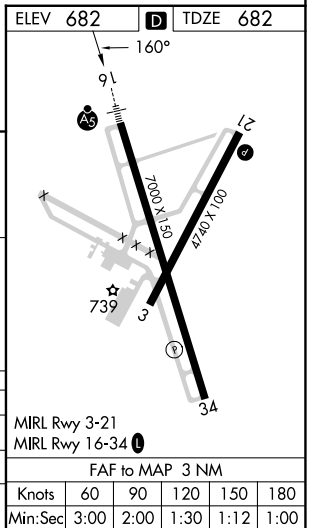
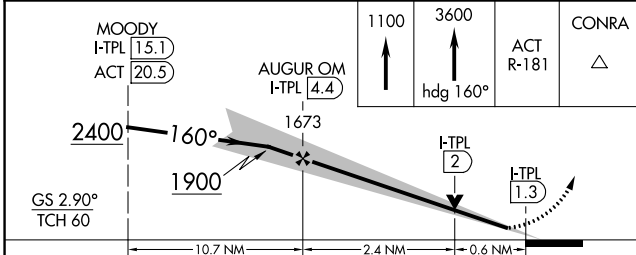
<p><b>⚠</b> NA Autopilot coupled approach NA below 990. For inop ALS, increase S-LOC 16 Cats C/D visibility to 1 SM.</p>	<p><b>MALS</b>R <b>AS</b></p>	<p><b>MISSED APPROACH:</b> Climb to 1100 then continue climb to 3600 on heading 160° and on ACT VORTAC R-181 to CONRA INT/ACT 40.2 DME and hold, continue climb-in-hold to 3600.</p>
--	-----------------------------------	--

AWOS-3PT <b>134.975</b>	GRAY APP CON <b>120.075 370.0</b>	CINC DEL <b>125.9</b>	UNICOM <b>123.0 (CTAF)</b>
----------------------------	--------------------------------------	--------------------------	-------------------------------



SC-3, 22 FEB 2024 to 21 MAR 2024

SC-3, 22 FEB 2024 to 21 MAR 2024



CATEGORY	A	B	C	D
S-ILS 16		882-1/2	200 (200-1/2)	
S-LOC 16		980-1/2	298 (300-1/2)	
<b>C</b> CIRCLING	1120-1 438 (500-1)	1180-1 498 (500-1)	1280-1 1/2 598 (600-1 1/2)	1420-2 1/4 738 (800-2 1/4)

WAAS CH <b>78101</b> <b>W16A</b>	APP CRS <b>160°</b>	Rwy Idg TDZE Apt Elev	<b>7000</b> <b>682</b> <b>682</b>
--	------------------------	-----------------------------	---

# RNAV (GPS) RWY 16

DRAUGHON-MILLER CENTRAL TEXAS RGNL (TPL)

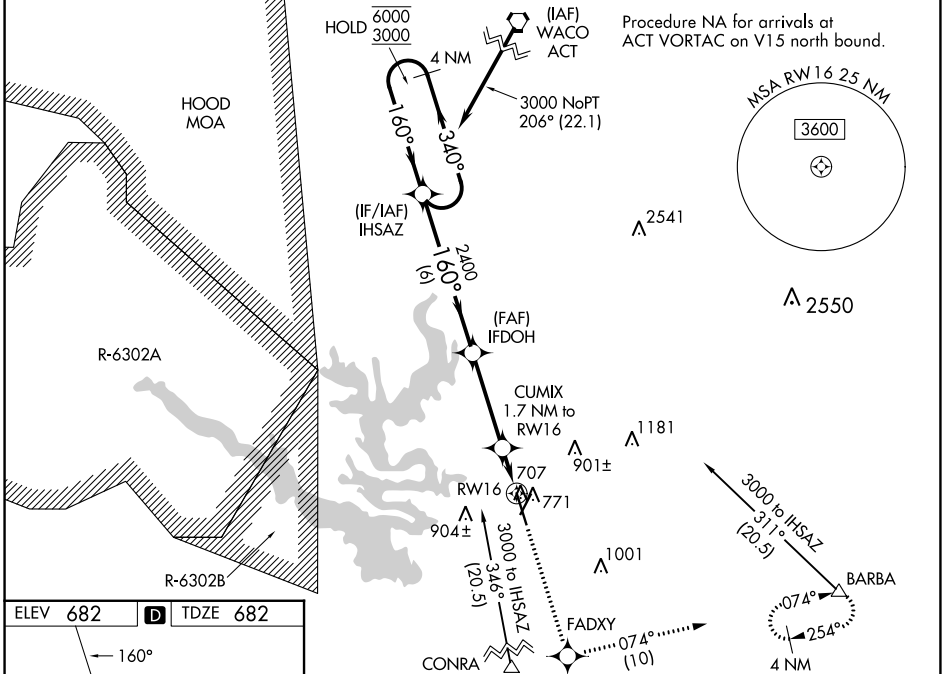
RNP APCH - GPS.

**⚠** For uncompensated Baro-VNAV systems, LNAV/VNAV NA below -16°C or above 54°C. For inop ALS, increase LNAV/VNAV all Cats visibility to ¾ SM and LNAV Cats C/D visibility to ⅞ SM.

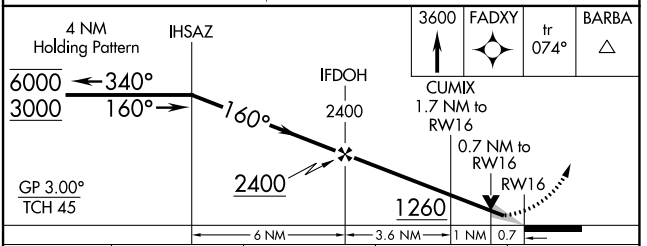
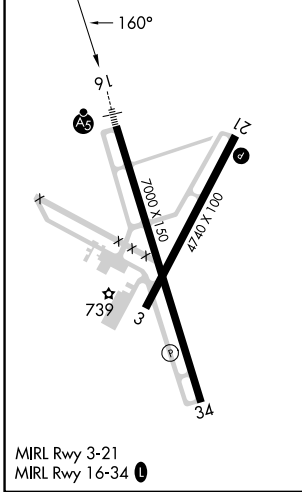
MALSR

MISSED APPROACH: Climb to 3600 direct FADXY and on track 074° to BARBA and hold, continue climb-in-hold to 3600.

AWOS-3PT <b>134.975</b>	GRAY APP CON <b>120.075 370.0</b>	CLNC DEL <b>125.9</b>	UNICOM <b>123.0</b> (CTAF)
----------------------------	--------------------------------------	--------------------------	-------------------------------



ELEV <b>682</b>	<b>D</b>	TDZE <b>682</b>
-----------------	----------	-----------------



CATEGORY	A	B	C	D
LPV DA		882-½	200 (200-½)	
LNAV/VNAV DA		932-½	250 (300-½)	
LNAV MDA		960-½	278 (300-½)	
<b>C</b> CIRCLING	1140-1 458 (500-1)	1200-1 518 (600-1)	1280-1½ 598 (600-1½)	1420-2¼ 738 (800-2¼)

SC-3, 22 FEB 2024 to 21 MAR 2024

SC-3, 22 FEB 2024 to 21 MAR 2024

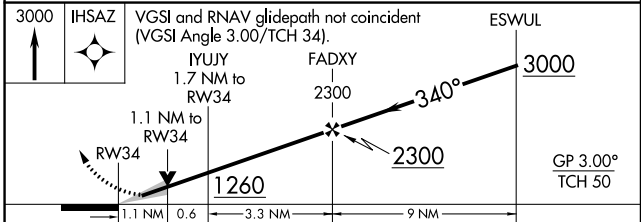
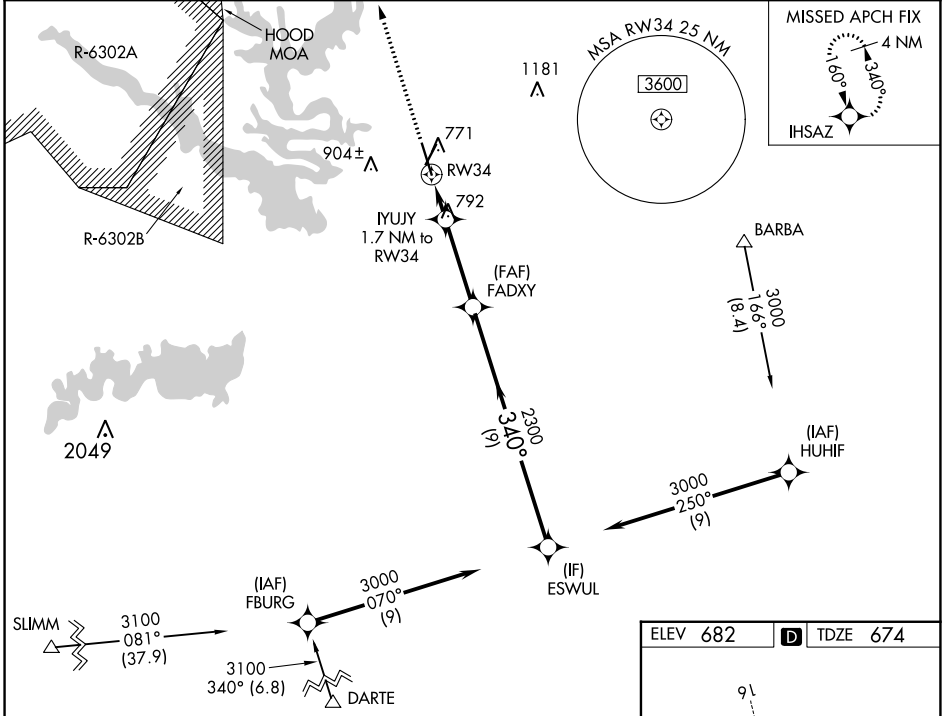
WAAS CH <b>82401</b> <b>W34A</b>	APP CRS <b>340°</b>	Rwy Idg TDZE Apt Elev	<b>7000</b> <b>674</b> <b>682</b>
--	------------------------	-----------------------------	---

# RNAV (GPS) RWY 34

DRAUGHON-MILLER CENTRAL TEXAS RGNL (TPL)

RNP APCH.	MISSED APPROACH: Climb to 3000 direct ILSAZ and hold.
<p><b>▼</b> For uncompensated Baro-VNAV systems, LNAV/VNAV NA below -16°C or above 54°C .</p>	

AWOS-3PT <b>134.975</b>	GRAY APP CON <b>120.075 370.0</b>	CLNC DEL <b>125.9</b>	UNICOM <b>123.0</b> (CTAF) <b>U</b>
----------------------------	--------------------------------------	--------------------------	--



CATEGORY	A	B	C	D
LPV DA		874- <sup>3</sup> / <sub>4</sub>	200 (200- <sup>3</sup> / <sub>4</sub> )	
LNAV/VNAV DA		924- <sup>3</sup> / <sub>4</sub>	250 (300- <sup>3</sup> / <sub>4</sub> )	
LNAV MDA	1060-1	386 (400-1)	1060-1 <sup>1</sup> / <sub>8</sub>	386 (400-1 <sup>1</sup> / <sub>8</sub> )
<b>C</b> CIRCLING	1140-1 458 (500-1)	1200-1 518 (600-1)	1280-1 <sup>1</sup> / <sub>2</sub> 598 (600-1 <sup>1</sup> / <sub>2</sub> )	1420-2 <sup>1</sup> / <sub>4</sub> 738 (800-2 <sup>1</sup> / <sub>4</sub> )

