

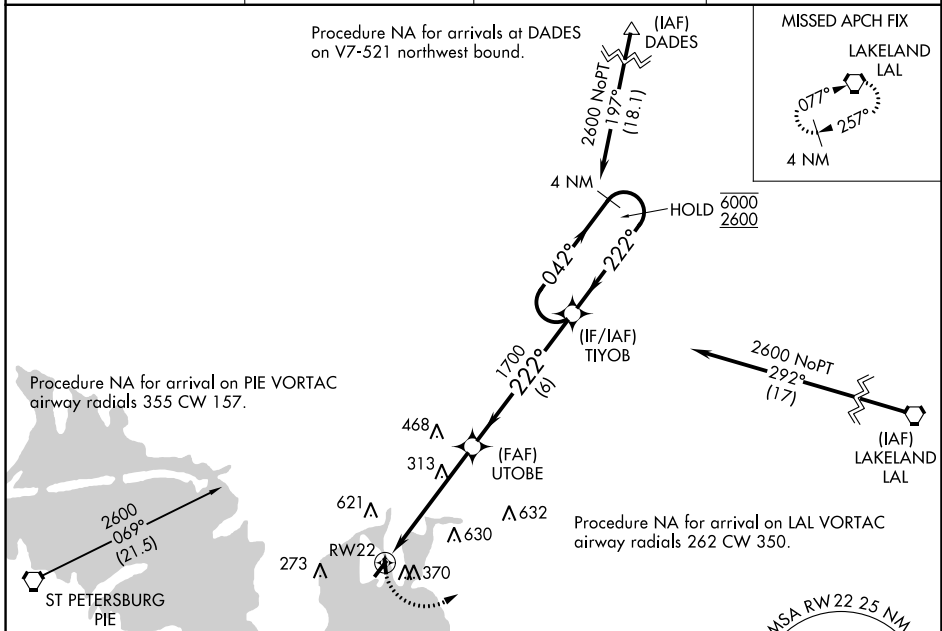
APP CRS	Rwy Idg	<b>3403</b>
<b>222°</b>	TDZE	<b>7</b>
	Apt Elev	<b>7</b>

# RNAV (GPS) RWY 22

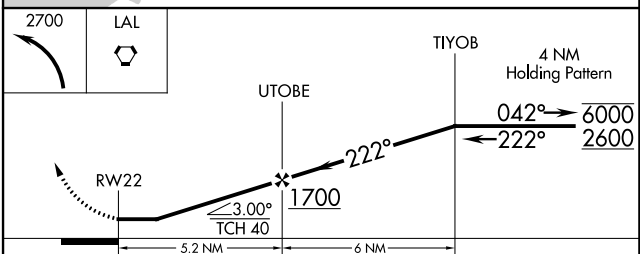
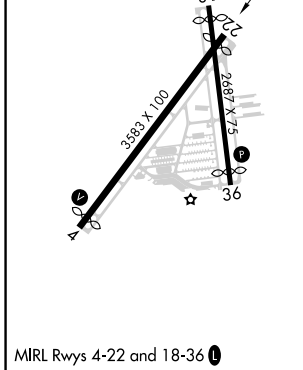
PETER O KNIGHT (TPF)

RNP APCH.	<p>⚠ Circling NA northwest of Rwy 4-22. Procedure NA at night. Rwy 22 helicopter visibility reduction below 1 SM NA. When local altimeter setting not received, use Tampa Intl altimeter setting and increase all MDA 20 feet. Circling NA to Rwy 18.</p>		
<p>MISSED APPROACH: Climbing left turn to 2700 direct LAL VORTAC and hold.</p>			

AWOS-3 <b>118.925</b>	TAMPA APP CON <b>119.9 290.3</b>	CLNC DEL <b>119.8</b>	UNICOM <b>122.725 (CTAF) 0</b>
--------------------------	-------------------------------------	--------------------------	-----------------------------------



ELEV	<b>7</b>	<b>D</b>	TDZE	<b>7</b>
------	----------	----------	------	----------



CATEGORY	A	B	C	D
LNAV MDA	580-1	573 (600-1)	NA	
<b>C</b> CIRCLING	720-1	713 (800-1)	NA	

SE-3, 27 JAN 2022 to 24 FEB 2022

SE-3, 27 JAN 2022 to 24 FEB 2022

WAAS CH <b>63220</b> <b>W36A</b>	APP CRS <b>344°</b>	Rwy Idg <b>2311</b> TDZE <b>7</b> Apt Elev <b>7</b>
--	------------------------	---

# RNAV (GPS) RWY 36

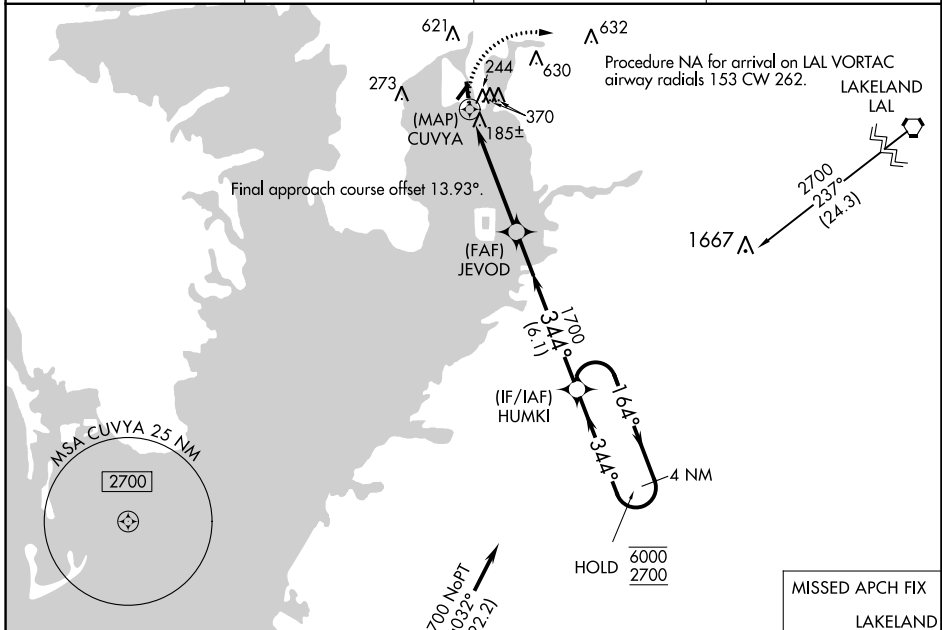
PETER O KNIGHT (TPF)

RNP APCH.

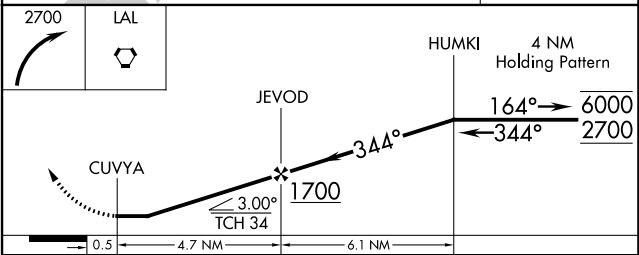
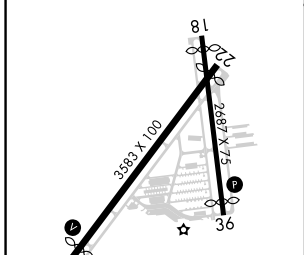
**⚠** Circling NA northwest of Rwy 4-22. Procedure NA at night. Rwy 36 helicopter visibility reduction below 1 SM NA. When local altimeter setting not received, use Tampa Intl altimeter setting and increase all MDA 20 feet. Circling NA to Rwy 18.

**MISSED APPROACH:** Climbing right turn to 2700 direct LAL VORTAC and hold.

AWOS-3 <b>118.925</b>	TAMPA APP CON <b>119.9 290.3</b>	CLNC DEL <b>119.8</b>	UNICOM <b>122.725 (CTAF)</b> <b>📻</b>
--------------------------	-------------------------------------	--------------------------	--



ELEV <b>7</b>	<b>D</b>	TDZE <b>7</b>
---------------	----------	---------------



CATEGORY	A	B	C	D
LP MDA	440-1	433 (500-1)		NA
LNAV MDA	500-1	493 (500-1)		NA
<b>C</b> CIRCLING	720-1	713 (800-1)		NA

MIRL Rwy 4-22 and 18-36 **📻**

SE-3, 27 JAN 2022 to 24 FEB 2022

SE-3, 27 JAN 2022 to 24 FEB 2022