

KAYOH SEVEN ARRIVAL
(KAYOH:KAYOH7) 05JAN17

(KAYOH:KAYOH7) 21168
KAYOH SEVEN ARRIVAL

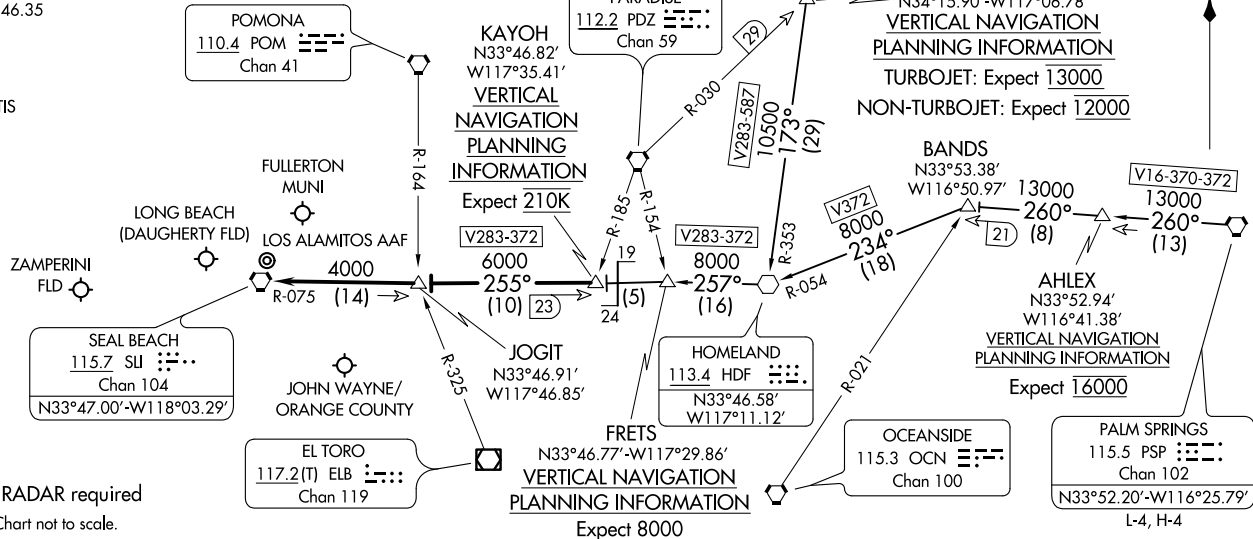
ARRIVAL ROUTE DESCRIPTION

HECTOR TRANSITION (HEC.KAYOH7): From over HEC VORTAC on HEC R-211 to BULGY INT then on R-211 and PDZ R-030 to DAWNA INT, then on HDF R-353 to HDF VOR, then on HDF R-257 to FRETS INT, then on HDF R-257 and SLI R-075 to KAYOH INT. Thence. . .

PALM SPRINGS TRANSITION (PSP.KAYOH7): From over PSP VORTAC on PSP R-260 to BANDS INT, then on HDF R-054 to HDF VOR, then on HDF R-257 to FRETS INT, then on HDF R-257 and SLI R-075 to KAYOH INT. Thence. . .

. . . from over KAYOH on SLI R-075 to JOGIT INT, then on SLI R-075 to SLI VORTAC, expect RADAR vectors to final approach course.

SOCAL APP CON
133.85 346.35
FUL ATIS
125.05
LGB ATIS
127.75
SNA D-ATIS
126.0
TOA ATIS
125.6



NOTE: RADAR required
NOTE: Chart not to scale.

LONG BEACH, CALIFORNIA

AL-236 (FAA)

LONG BEACH, CALIFORNIA